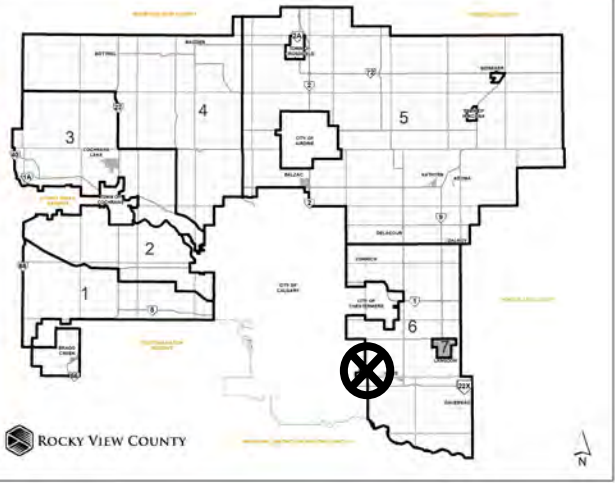


Location & Context

Redesignation Proposal

To redesignate the subject lands from Residential, Rural District (R-RUR) to Industrial, Light District (I-LHT) in order to facilitate the operation of a landscaping business.



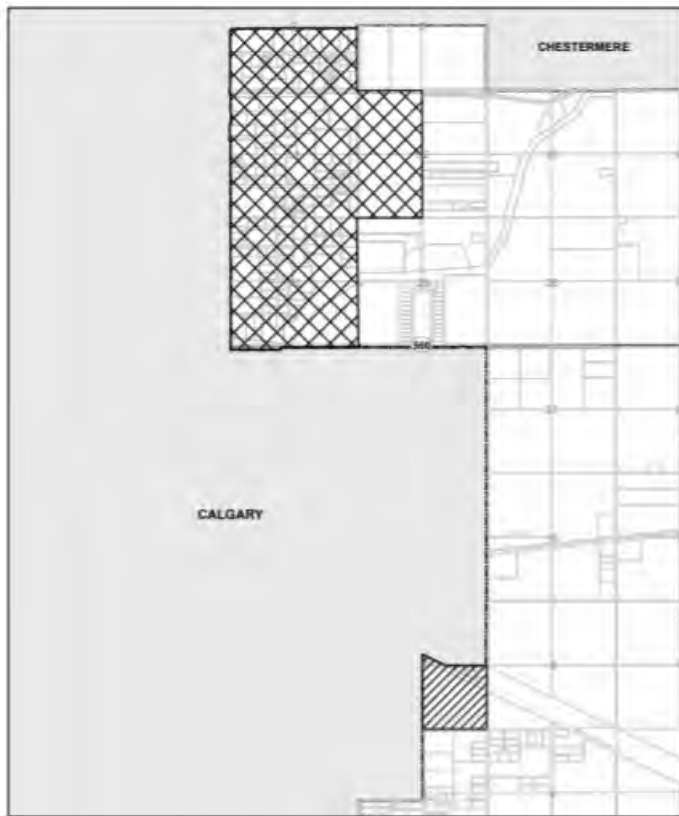
Division: 6
 Roll: 03308007
 File: PL20200061
 Printed: Dec. 10, 2020
 Legal: A portion of SE-08-23-28-W04M

Shepard Area Structure Plan

Redesignation Proposal

To redesignate the subject lands from Residential, Rural District (R-RUR) to Industrial, Light District (I-LHT) in order to facilitate the operation of a landscaping business.

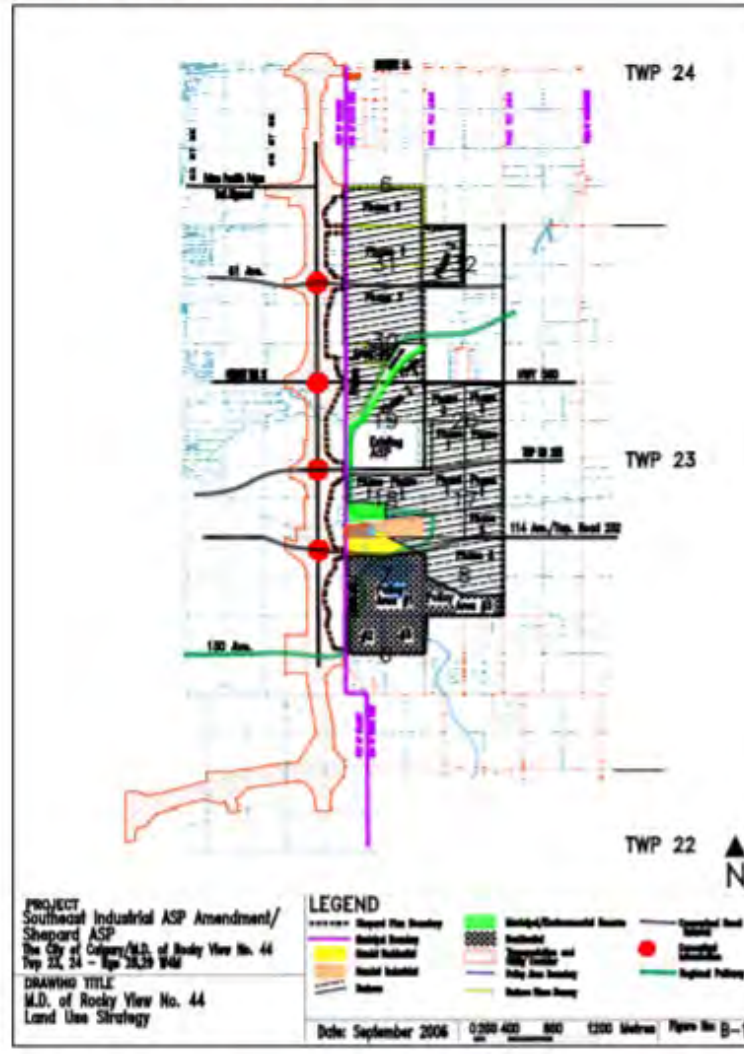
FIGURE B-1: Land Use Strategy



Office Consolidation
 Bylaw C-7418-2014



-  AREA REMAINING IN SHEPARD PLAN (BYLAW C-7418-2014)
-  AREA REMOVED FROM SHEPARD PLAN (BYLAW C-7418-2014)



Division: 6
 Roll: 03308007
 File: PL20200061
 Printed: Dec. 10, 2020
 Legal: A portion of SE-08-23-28-W04M

Development Proposal

Redesignation Proposal

To redesignate the subject lands from Residential, Rural District (R-RUR) to Industrial, Light District (I-LHT) in order to facilitate the operation of a landscaping business.



Division: 6
Roll: 03308007
File: PL20200061
Printed: Dec. 10, 2020
Legal: A portion of SE-08-23-28-W04M

Environmental

Redesignation Proposal

To redesignate the subject lands from Residential, Rural District (R-RUR) to Industrial, Light District (I-LHT) in order to facilitate the operation of a landscaping business.



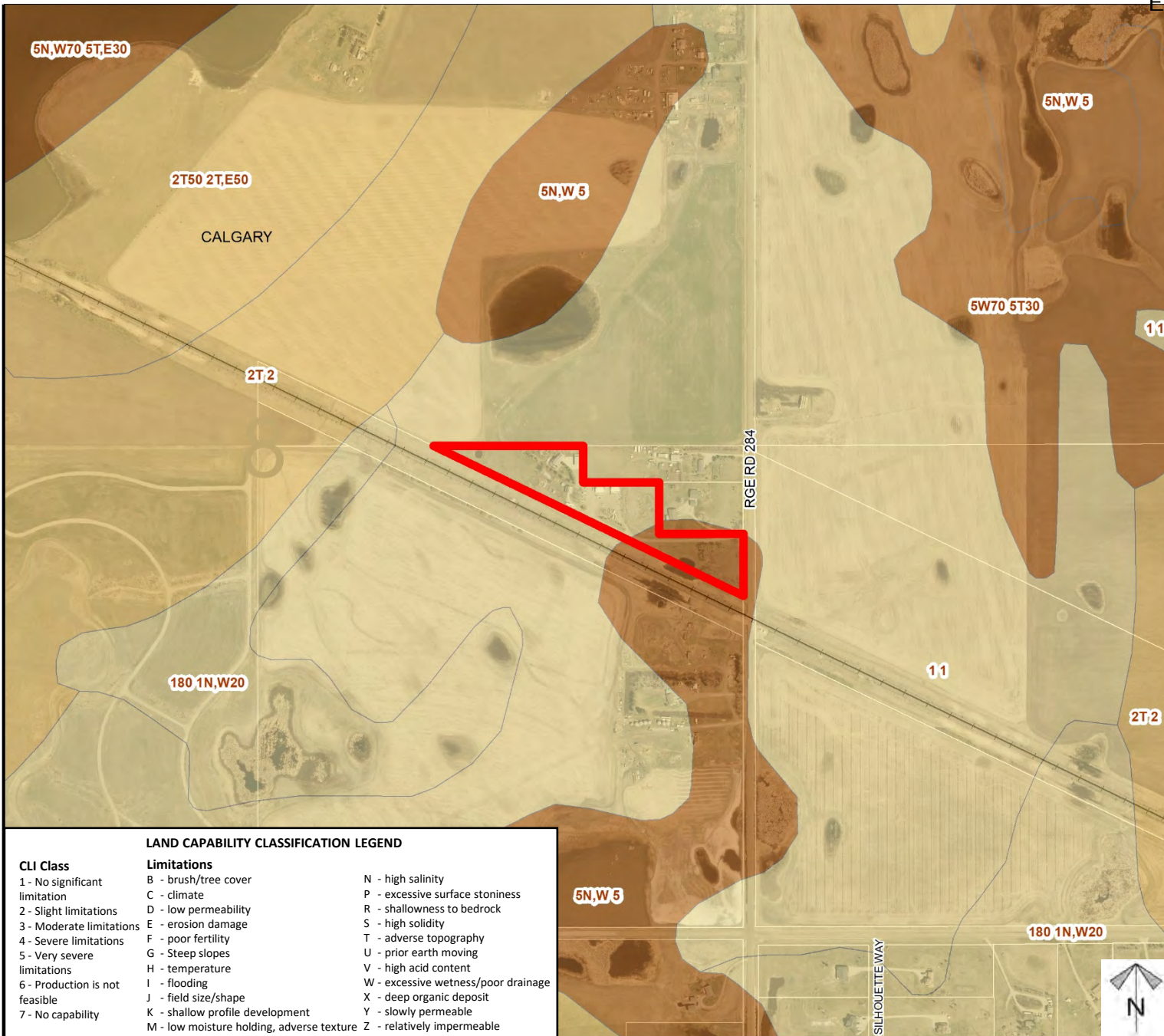
-  Subject Lands
-  Contour - 2 meters
-  Riparian Setbacks
-  Alberta Wetland Inventory
-  Surface Water

*Division: 6
 Roll: 03308007
 File: PL20200061
 Printed: Dec. 10, 2020
 Legal: A portion of SE-08-23-28-W04M*

Soil Classifications

Redesignation Proposal

To redesignate the subject lands from Residential, Rural District (R-RUR) to Industrial, Light District (I-LHT) in order to facilitate the operation of a landscaping business.



LAND CAPABILITY CLASSIFICATION LEGEND

CLI Class	Limitations
1 - No significant limitation	B - brush/tree cover
2 - Slight limitations	C - climate
3 - Moderate limitations	D - low permeability
4 - Severe limitations	E - erosion damage
5 - Very severe limitations	F - poor fertility
6 - Production is not feasible	G - Steep slopes
7 - No capability	H - temperature
	I - flooding
	J - field size/shape
	K - shallow profile development
	M - low moisture holding, adverse texture
	N - high salinity
	P - excessive surface stoniness
	R - shallowness to bedrock
	S - high solidity
	T - adverse topography
	U - prior earth moving
	V - high acid content
	W - excessive wetness/poor drainage
	X - deep organic deposit
	Y - slowly permeable
	Z - relatively impermeable



Division: 6
 Roll: 03308007
 File: PL20200061
 Printed: Dec. 10, 2020
 Legal: A portion of SE-08-23-28-W04M

Landowner Circulation Area

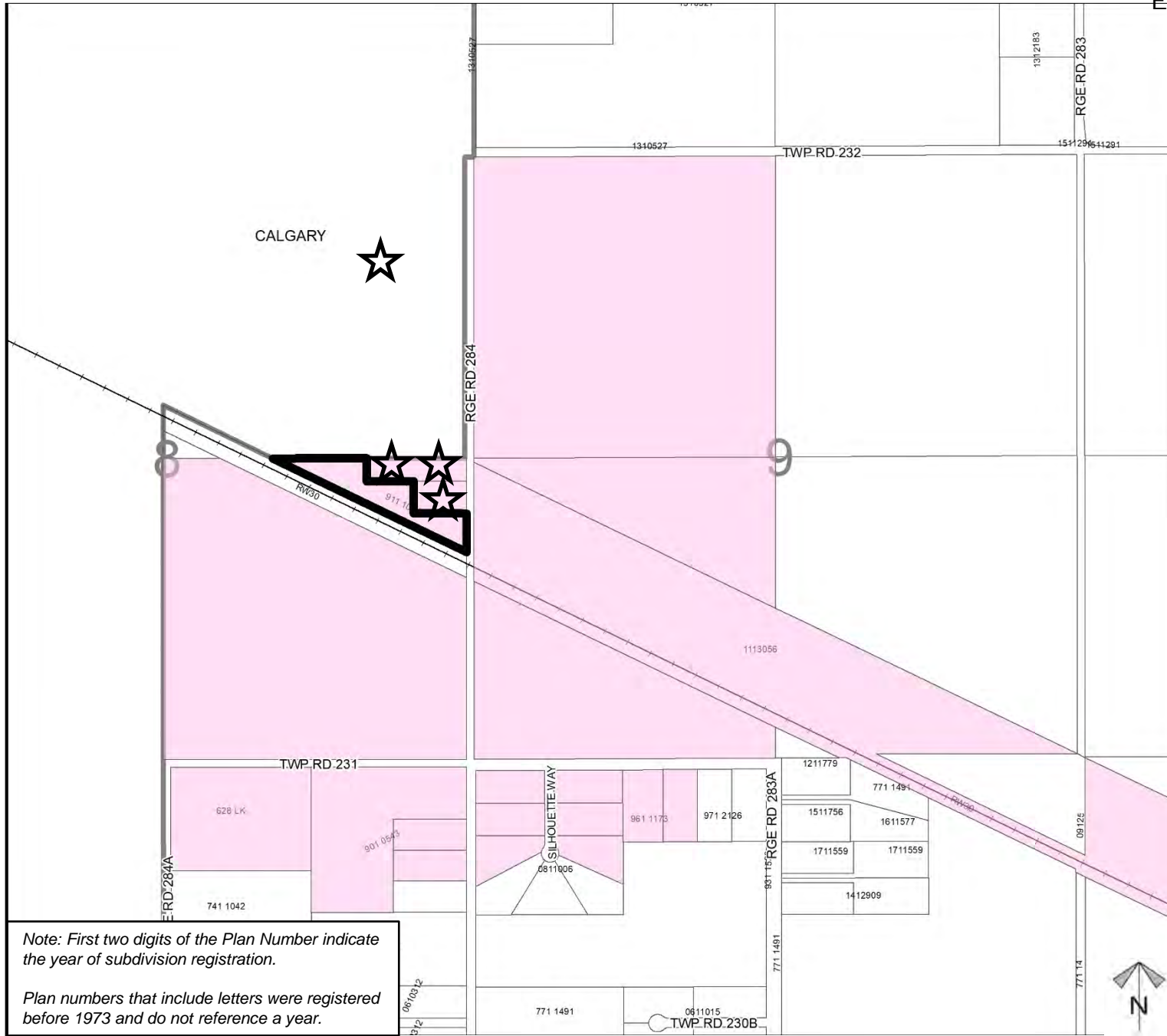
Redesignation Proposal

To redesignate the subject lands from Residential, Rural District (R-RUR) to Industrial, Light District (I-LHT) in order to facilitate the operation of a landscaping business.

Legend

- Support 
- Opposition 

Division: 6
Roll: 03308007
File: PL20200061
Printed: Dec. 10, 2020
Legal: A portion of SE-08-23-28-W04M



Note: First two digits of the Plan Number indicate the year of subdivision registration.

Plan numbers that include letters were registered before 1973 and do not reference a year.