

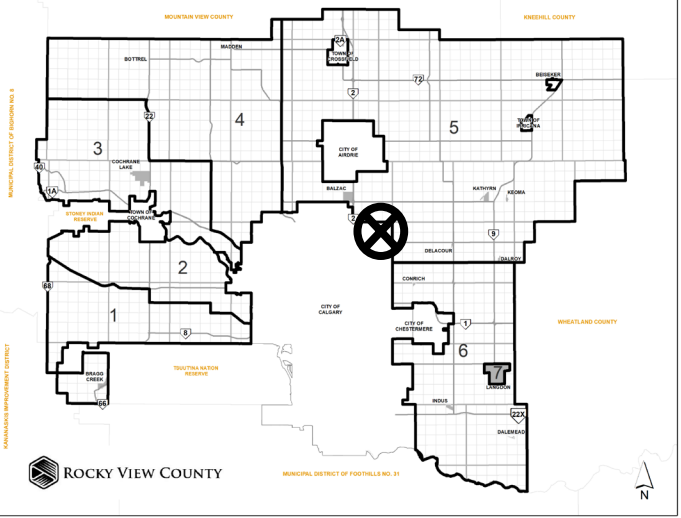


Location & Context

Redesignation Proposal

To redesignate the subject parcel from Agricultural, General District (A-GEN) to Special, Future Urban Development District (S-FUD) in order to facilitate a future outdoor storage development (RV trailer storage).

Division: 5
Roll: 05320002
File: PL20200164
Printed: December 8, 2020
Legal: A portion of SW-20-25-28-W04M





Development Proposal

Redesignation Proposal

To redesignate the subject parcel from Agricultural, General District (A-GEN) to Special, Future Urban Development District (S-FUD) in order to facilitate a future outdoor storage development (RV trailer storage).

±56.76 ha
(±140.26 ac)
A-GEN → S-FUD

RGE RD 285



Division: 5
Roll: 05320002
File: PL20200164
Printed: December 8, 2020
Legal: A portion of SW-20-
25-28-W04M



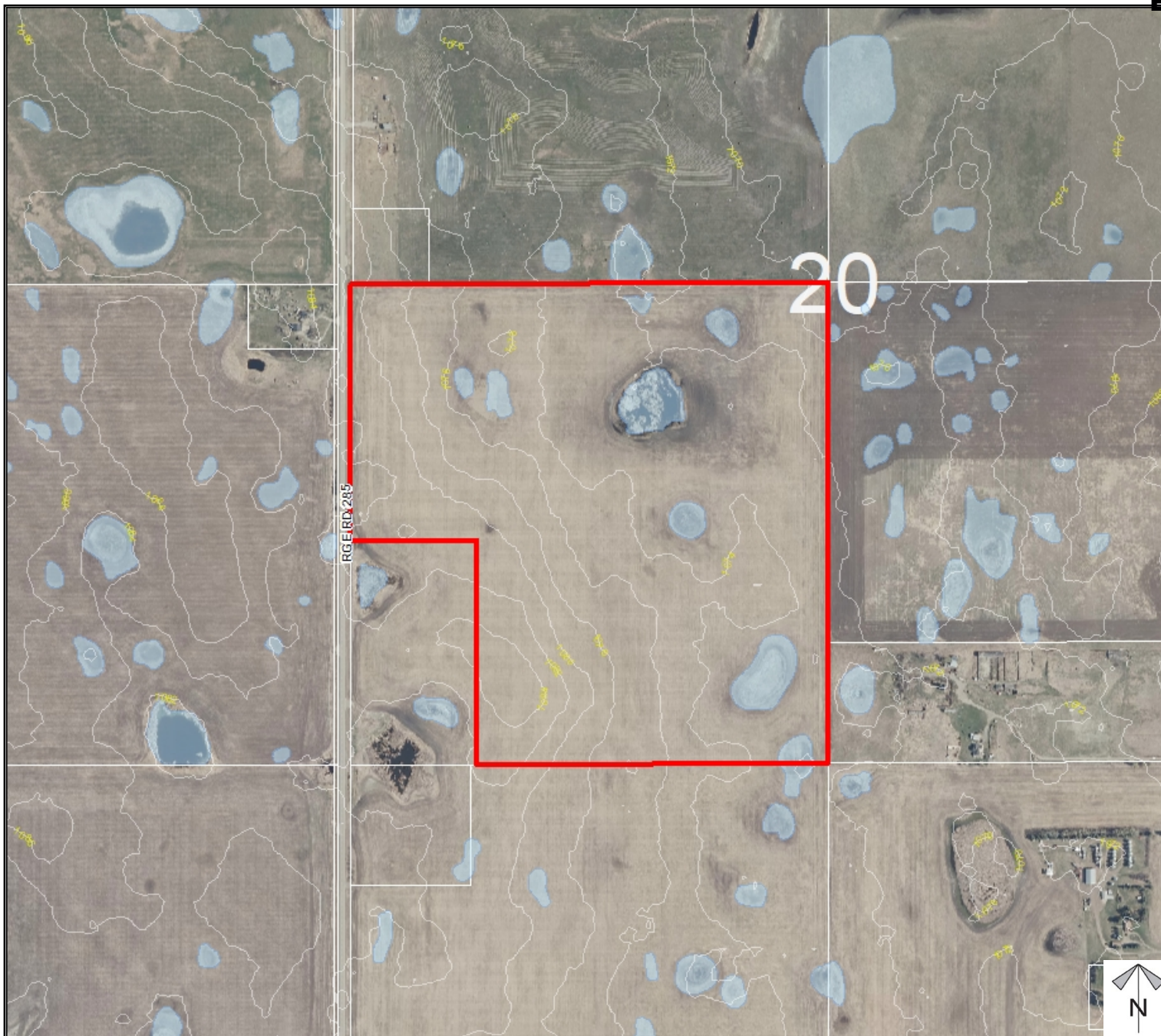
Environmental

Redesignation Proposal

To redesignate the subject parcel from Agricultural, General District (A-GEN) to Special, Future Urban Development District (S-FUD) in order to facilitate a future outdoor storage development (RV trailer storage).

-  Subject Lands
-  Contour - 2 meters
-  Riparian Setbacks
-  Alberta Wetland Inventory
-  Surface Water

Division: 5
 Roll: 05320002
 File: PL20200164
 Printed: December 8, 2020
 Legal: A portion of SW-20-25-28-W04M

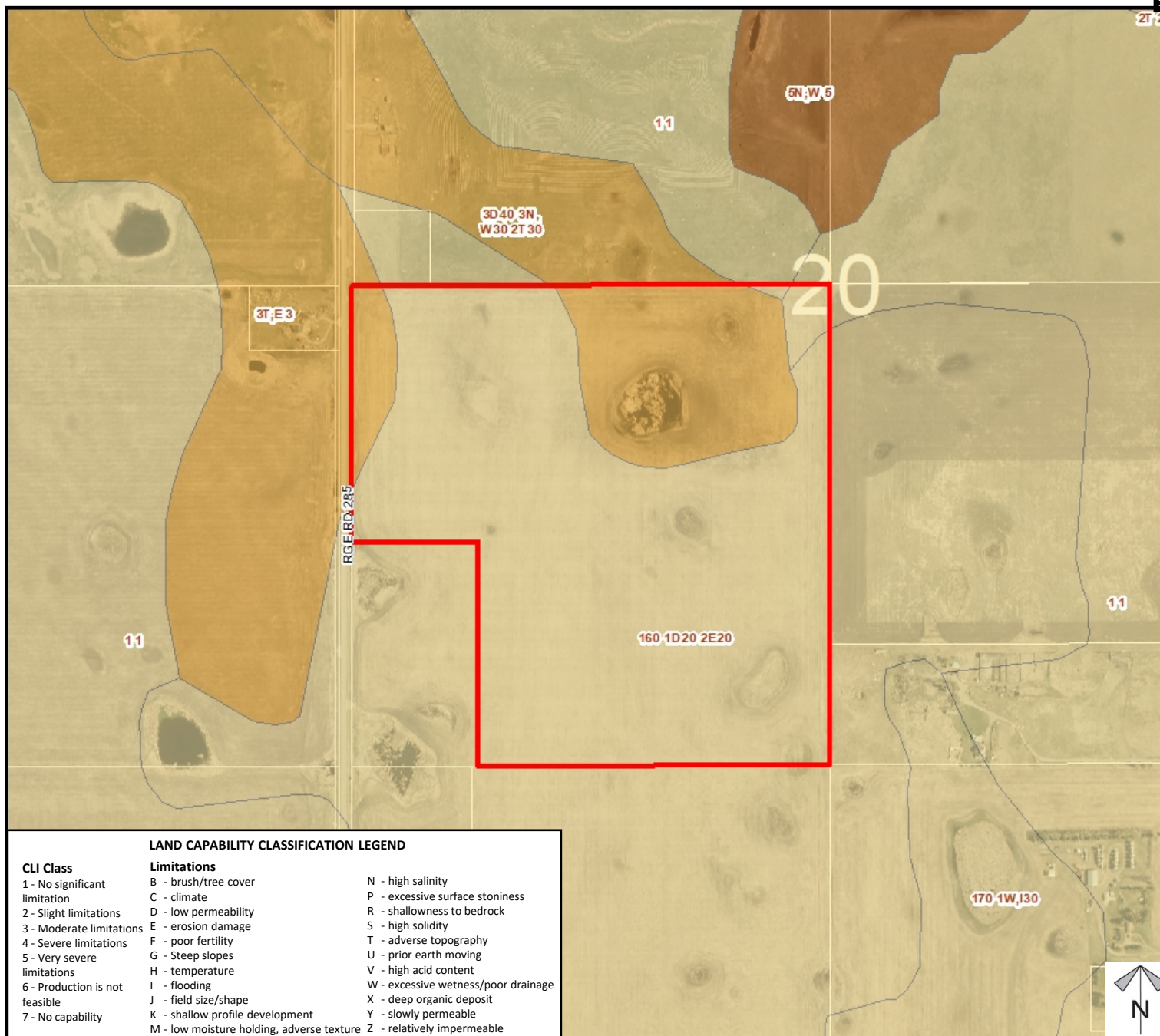




Soil Classifications

Redesignation Proposal

To redesignate the subject parcel from Agricultural, General District (A-GEN) to Special, Future Urban Development District (S-FUD) in order to facilitate a future outdoor storage development (RV trailer storage).



Division: 5
Roll: 05320002
File: PL20200164
Printed: December 8, 2020
Legal: A portion of SW-20-25-28-W04M

Redesignation Proposal

To redesignate the subject parcel from Agricultural, General District (A-GEN) to Special, Future Urban Development District (S-FUD) in order to facilitate a future outdoor storage development (RV trailer storage).

Legend

Support



Opposition



Division: 5

Roll: 05320002

File: PL20200164

Printed: December 8, 2020

Legal: A portion of SW-20-25-28-W04M

Note: First two digits of the Plan Number indicate the year of subdivision registration.

Plan numbers that include letters were registered before 1973 and do not reference a year.