



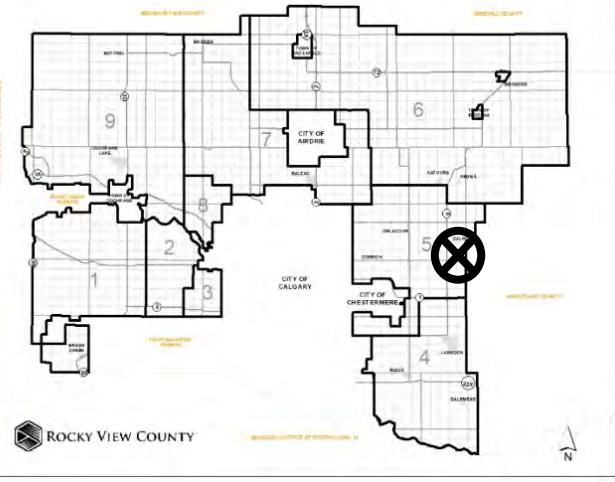
Location & Context

Redesignation Proposal

To redesignate a portion of the land from Agricultural, General District (A-GEN) to Residential, Rural District (R-RUR) and Agricultural, Small Parcel District (A-SML), in order to facilitate the creation of a ± 4.62 acres new lot with a ± 84.93 acres remainder.

Division: 5
File: PL20200103
Roll: 05201008
Legal: Block 1,
Plan 9511830,
SW-01-25-27-W04M

Printed:
 September 17, 2020

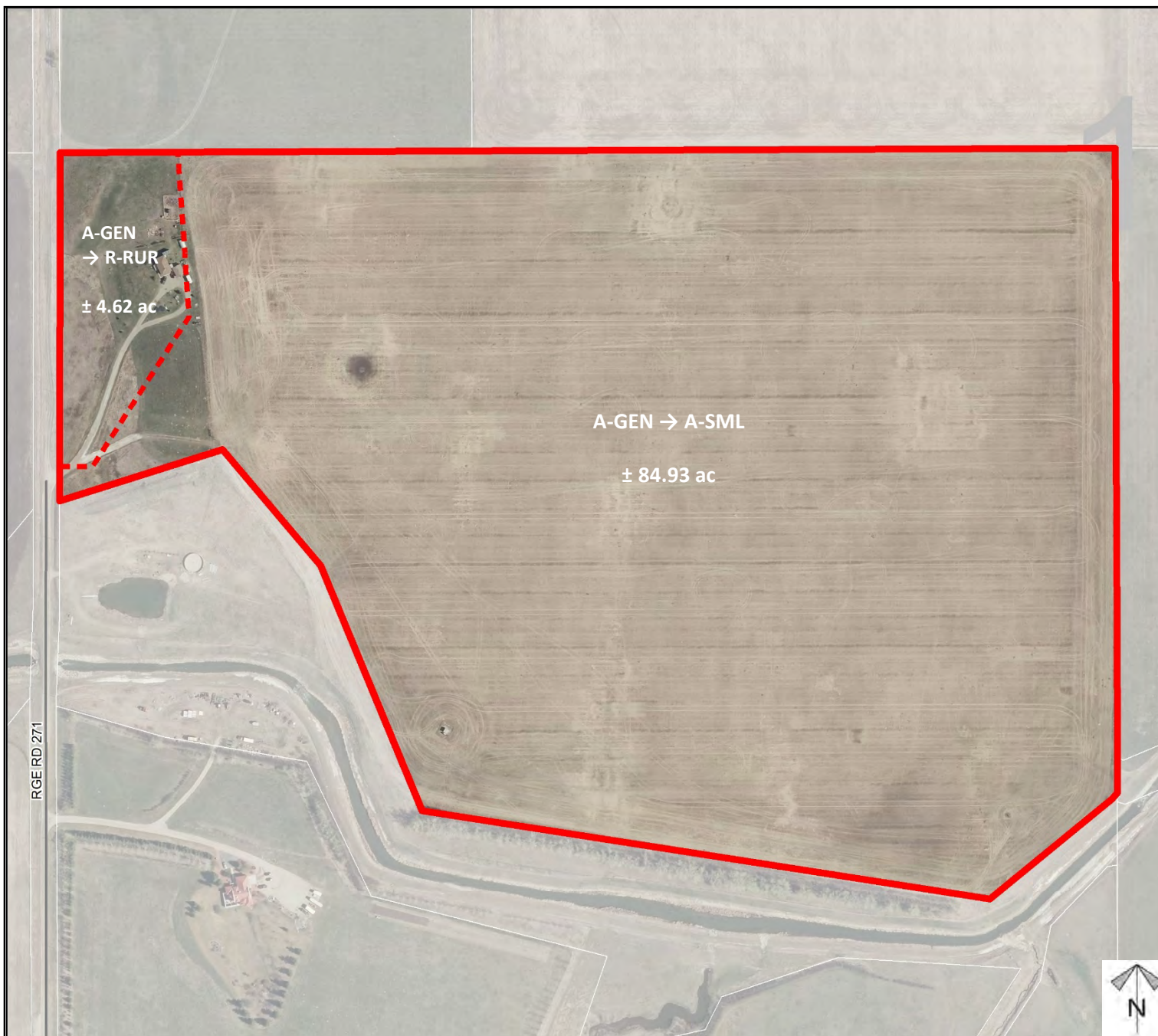




Development Proposal

Redesignation Proposal

To redesignate a portion of the land from Agricultural, General District (A-GEN) to Residential, Rural District (R-RUR) and Agricultural, Small Parcel District (A-SML), in order to facilitate the creation of a ± 4.62 acres new lot with a ± 84.93 acres remainder.



Division: 5
 File: PL20200103
 Roll: 05201008
 Legal: Block 1,
 Plan 9511830,
 SW-01-25-27-W04M

Printed:
 September 17, 2020



Environmental

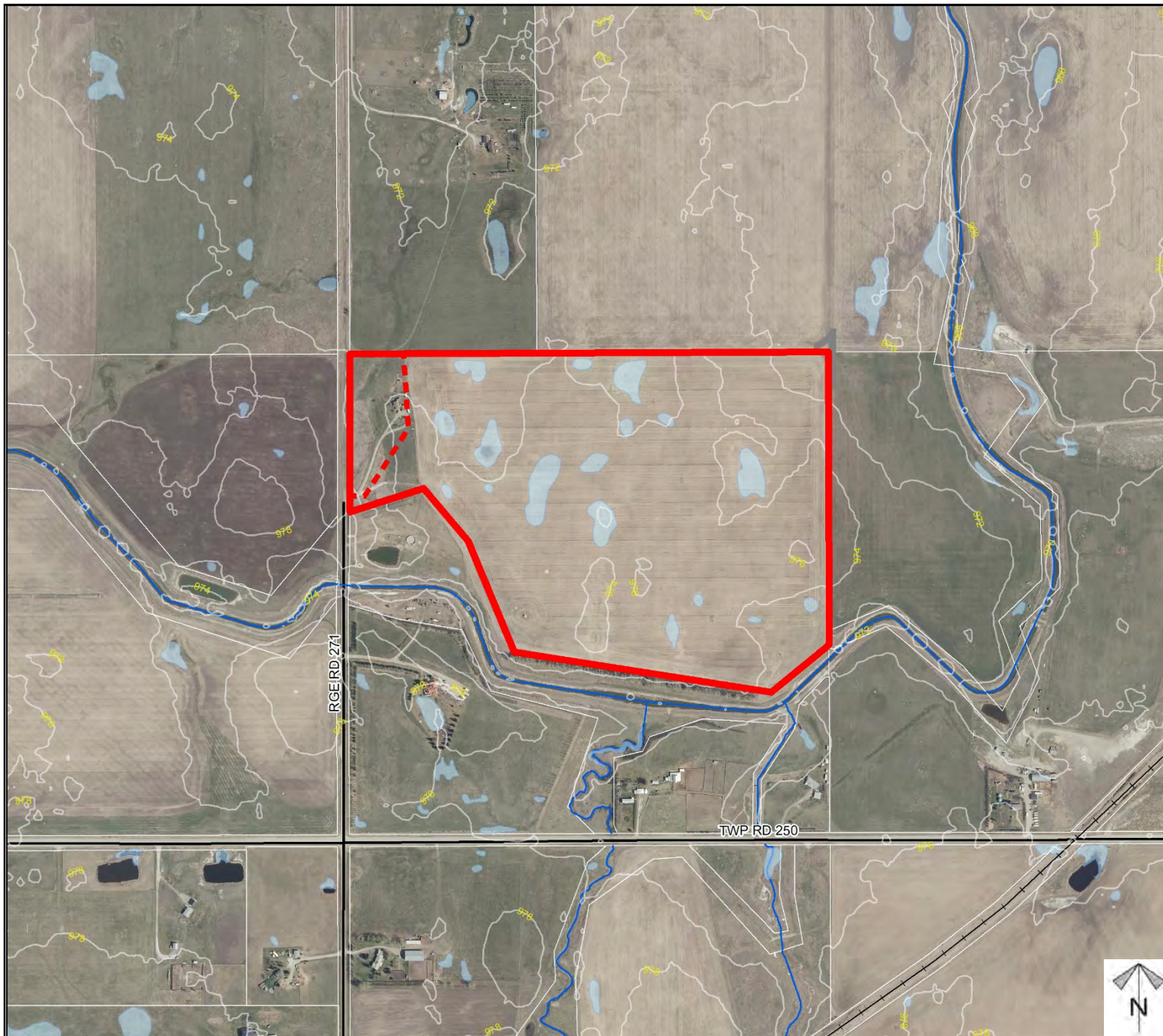
Redesignation Proposal

To redesignate a portion of the land from Agricultural, General District (A-GEN) to Residential, Rural District (R-RUR) and Agricultural, Small Parcel District (A-SML), in order to facilitate the creation of a ± 4.62 acres new lot with a ± 84.93 acres remainder.

-  Subject Lands
-  Contour - 2 meters
-  Riparian Setbacks
-  Alberta Wetland Inventory
-  Surface Water

Division: 5
 File: PL20200103
 Roll: 05201008
 Legal: Block 1,
 Plan 9511830,
 SW-01-25-27-W04M

Printed:
 September 17, 2020

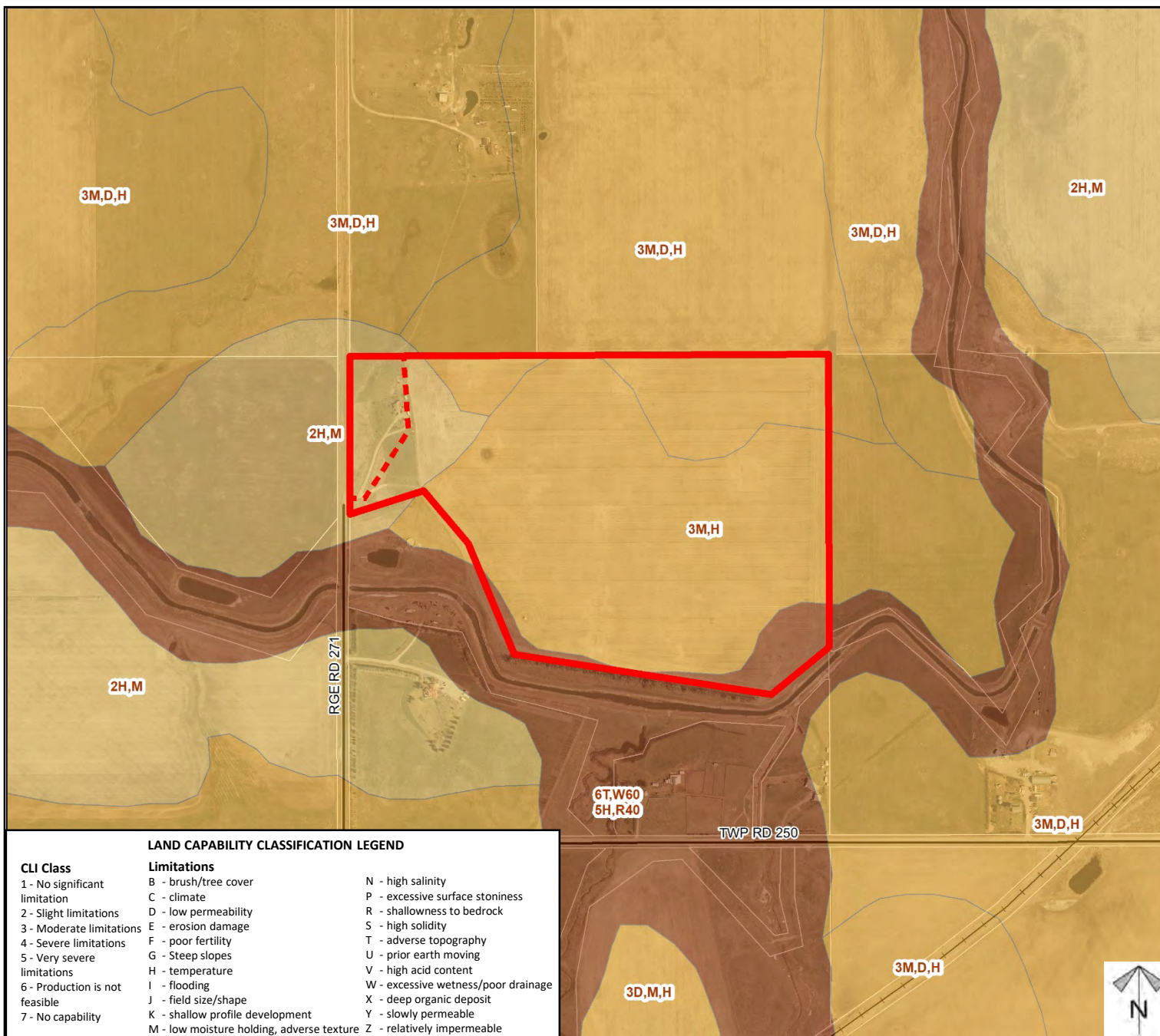




Soil Classifications

Redesignation Proposal

To redesignate a portion of the land from Agricultural, General District (A-GEN) to Residential, Rural District (R-RUR) and Agricultural, Small Parcel District (A-SML), in order to facilitate the creation of a ± 4.62 acres new lot with a ± 84.93 acres remainder.



LAND CAPABILITY CLASSIFICATION LEGEND

CLI Class

- 1 - No significant limitation
- 2 - Slight limitations
- 3 - Moderate limitations
- 4 - Severe limitations
- 5 - Very severe limitations
- 6 - Production is not feasible
- 7 - No capability

Limitations

- B - brush/tree cover
- C - climate
- D - low permeability
- E - erosion damage
- F - poor fertility
- G - Steep slopes
- H - temperature
- I - flooding
- J - field size/shape
- K - shallow profile development
- M - low moisture holding, adverse texture
- N - high salinity
- P - excessive surface stoniness
- R - shallowness to bedrock
- S - high solidity
- T - adverse topography
- U - prior earth moving
- V - high acid content
- W - excessive wetness/poor drainage
- X - deep organic deposit
- Y - slowly permeable
- Z - relatively impermeable

Division: 5
 File: PL20200103
 Roll: 05201008
 Legal: Block 1,
 Plan 9511830,
 SW-01-25-27-W04M

Printed:
 September 17, 2020

Landowner Circulation Area

Redesignation Proposal

To redesignate a portion of the land from Agricultural, General District (A-GEN) to Residential, Rural District (R-RUR) and Agricultural, Small Parcel District (A-SML), in order to facilitate the creation of a ± 4.62 acres new lot with a ± 84.93 acres remainder.

Legend

Support



Opposition



Division: 5

File: PL20200103

Roll: 05201008

Legal: Block 1,
Plan 9511830,
SW-01-25-27-W04M

Printed:
September 17, 2020

