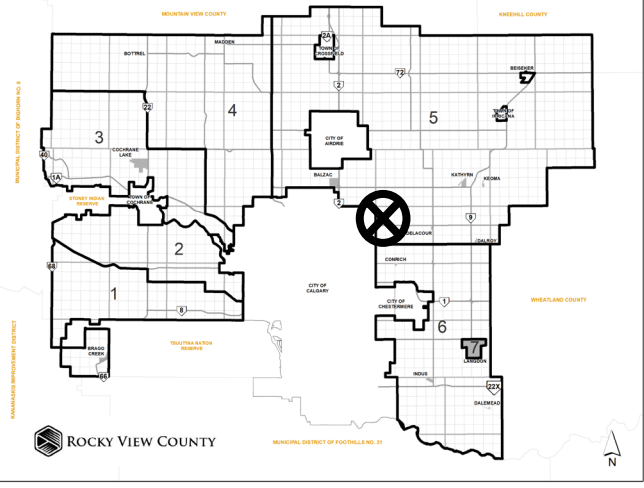


## Location & Context

### Redesignation Proposal

To redesignate a  $\pm 9.31$  hectare ( $\pm 23.00$  acre) portion of the lands from Agricultural, General District to Business, Live Work District, in order to facilitate the future development of outdoor storage for equipment, recreational vehicles, trucks and trailers.

Division: 5  
 Roll: 05330003  
 File: PL20200065  
 Legal: A portion of NW-30-25-28-W04M  
 Printed: Jan 29, 2021



## Development Proposal

### Redesignation Proposal

To redesignate a  $\pm 9.31$  hectare ( $\pm 23.00$  acre) portion of the lands from Agricultural, General District to Business, Live Work District, in order to facilitate the future development of outdoor storage for equipment, recreational vehicles, trucks and trailers.

CALGARY

A-GEN  $\rightarrow$  B-LWK

*Division: 5  
Roll: 05330003  
File: PL20200065  
Legal: A portion of NW-30-  
25-28-W04M  
Printed: Jan 29, 2021*



## Environmental

**Redesignation Proposal**

To redesignate a  $\pm 9.31$  hectare ( $\pm 23.00$  acre) portion of the lands from Agricultural, General District to Business, Live Work District, in order to facilitate the future development of outdoor storage for equipment, recreational vehicles, trucks and trailers.

-  Subject Lands
-  Contour - 2 meters
-  Riparian Setbacks
-  Alberta Wetland Inventory
-  Surface Water

Division: 5  
 Roll: 05330003  
 File: PL20200065  
 Legal: A portion of NW-30-25-28-W04M  
 Printed: Jan 29, 2021

CALGARY

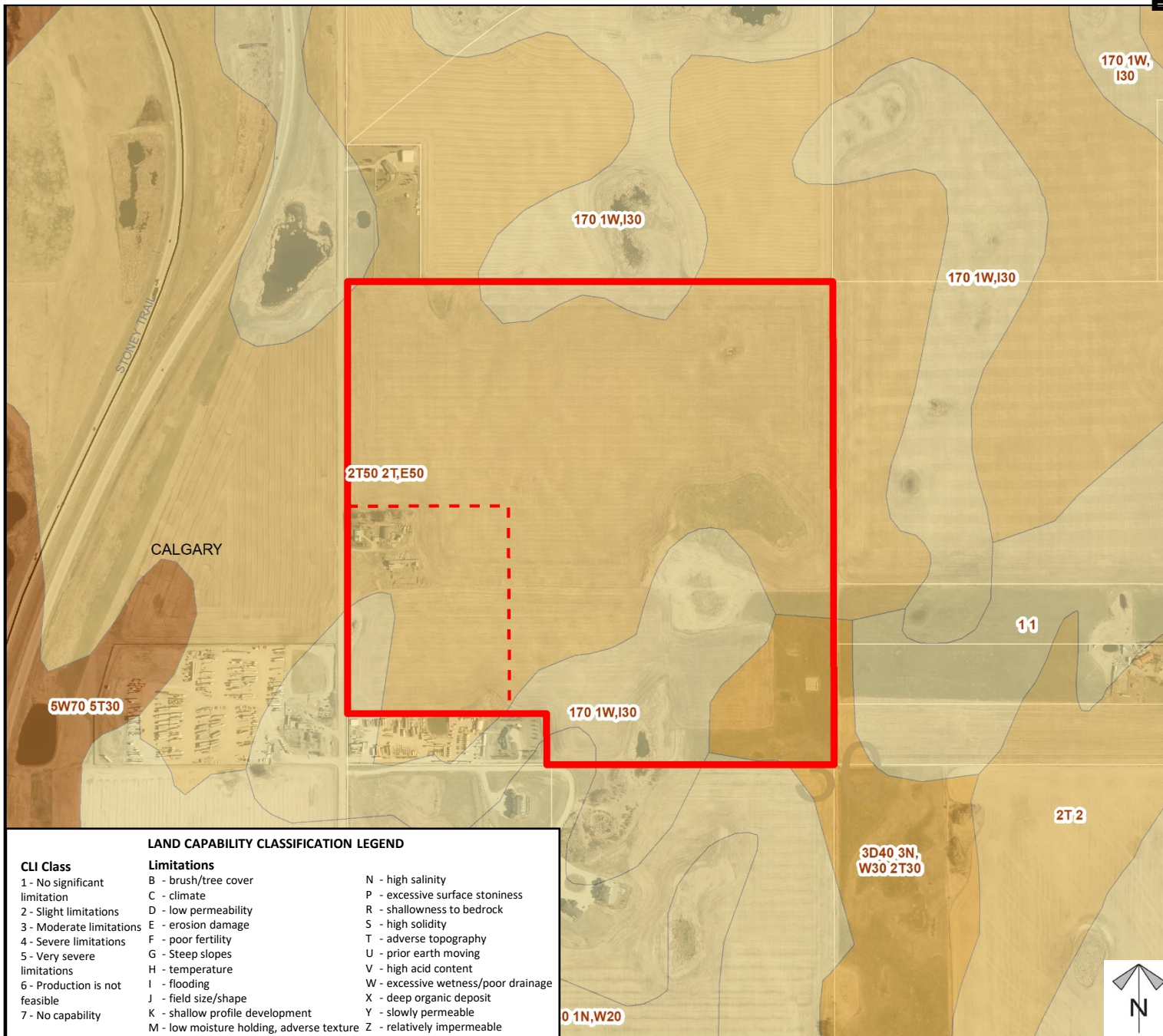
30



## Soil Classifications

### Redesignation Proposal

To redesignate a  $\pm 9.31$  hectare ( $\pm 23.00$  acre) portion of the lands from Agricultural, General District to Business, Live Work District, in order to facilitate the future development of outdoor storage for equipment, recreational vehicles, trucks and trailers.



#### LAND CAPABILITY CLASSIFICATION LEGEND

##### CLI Class

- 1 - No significant limitation
- 2 - Slight limitations
- 3 - Moderate limitations
- 4 - Severe limitations
- 5 - Very severe limitations
- 6 - Production is not feasible
- 7 - No capability

##### Limitations

- B - brush/tree cover
- C - climate
- D - low permeability
- E - erosion damage
- F - poor fertility
- G - Steep slopes
- H - temperature
- I - flooding
- J - field size/shape
- K - shallow profile development
- M - low moisture holding, adverse texture
- N - high salinity
- P - excessive surface stoniness
- R - shallowness to bedrock
- S - high solidity
- T - adverse topography
- U - prior earth moving
- V - high acid content
- W - excessive wetness/poor drainage
- X - deep organic deposit
- Y - slowly permeable
- Z - relatively impermeable

Division: 5

Roll: 05330003

File: PL20200065

Legal: A portion of NW-30-25-28-W04M

Printed: Jan 29, 2021



## Landowner Circulation Area

### Redesignation Proposal

To redesignate a  $\pm 9.31$  hectare ( $\pm 23.00$  acre) portion of the lands from Agricultural, General District to Business, Live Work District, in order to facilitate the future development of outdoor storage for equipment, recreational vehicles, trucks and trailers.

### Legend

Support



Non-Support



Division: 5  
Roll: 05330003  
File: PL20200065  
Legal: A portion of NW-30-25-28-W04M  
Printed: Jan 29, 2021

