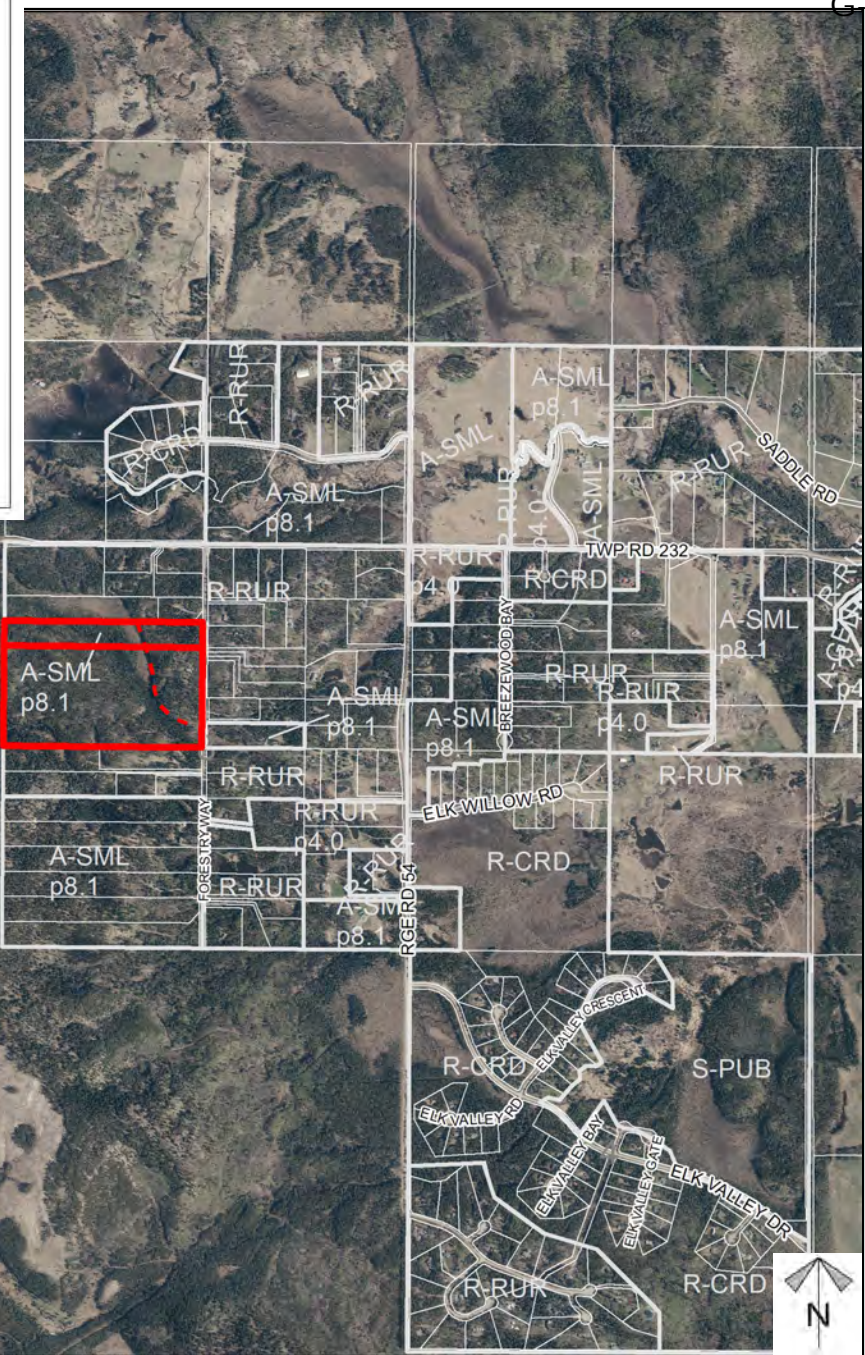
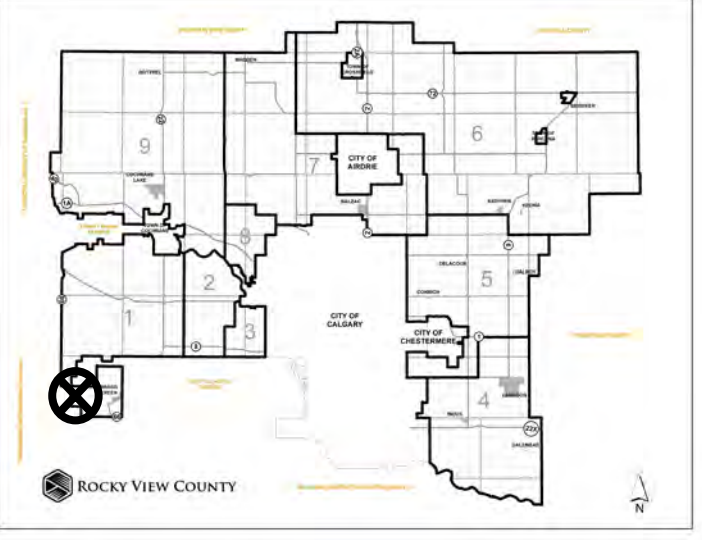


Location & Context

Redesignate Proposal

To redesignate a ± 5.62 ha (± 13.89 ac) portion of the subject lands from Agricultural, General District (A-GEN) to Agricultural, Small District (A-SML p 8.0) and a ± 5.52 ha (± 13.64 ac) portion of the subject lands from Agricultural, Small District (A-SML p 8.0) to Agricultural, General District (A-GEN) in order to facilitate a Boundary Adjustment.

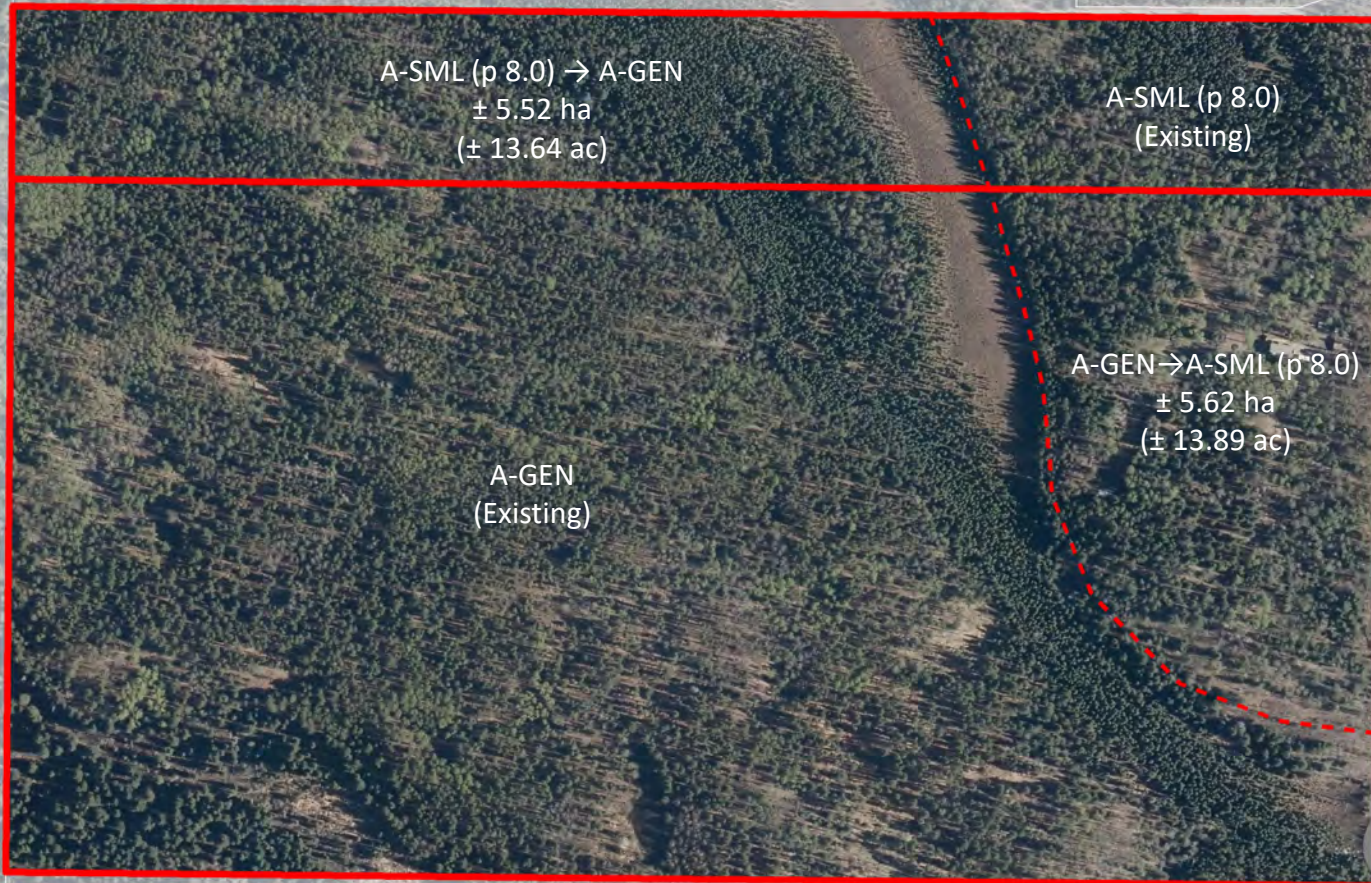


Division: 1
Roll: 03908007/03908028
File: PL20210138
Printed: Aug 4, 2021
Legal: A portion of NW-08-23-05-W05M

Development Proposal

Redesignate Proposal

To redesignate a ± 5.62 ha (± 13.89 ac) portion of the subject lands from Agricultural, General District (A-GEN) to Agricultural, Small District (A-SML p 8.0) and a ± 5.52 ha (± 13.64 ac) portion of the subject lands from Agricultural, Small District (A-SML p 8.0) to Agricultural, General District (A-GEN) in order to facilitate a Boundary Adjustment.



Division: 1
 Roll: 03908007/03908028
 File: PL20210138
 Printed: Aug 4, 2021
 Legal: A portion of NW-08-
 23-05-W05M

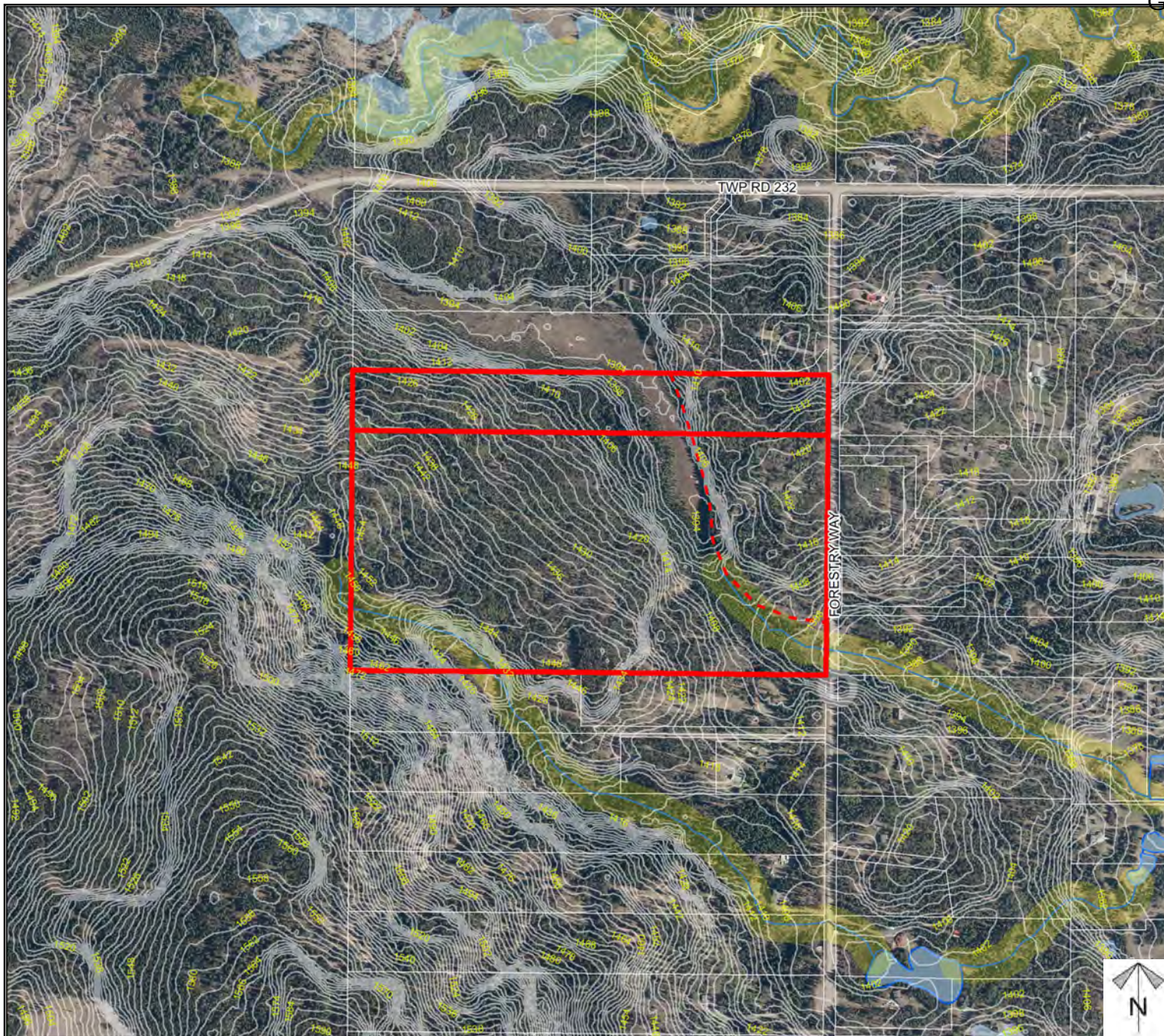
Environmental

Redesignate Proposal

To redesignate a ± 5.62 ha (± 13.89 ac) portion of the subject lands from Agricultural, General District (A-GEN) to Agricultural, Small District (A-SML p 8.0) and a ± 5.52 ha (± 13.64 ac) portion of the subject lands from Agricultural, Small District (A-SML p 8.0) to Agricultural, General District (A-GEN) in order to facilitate a Boundary Adjustment

-  Subject Lands
-  Contour - 2 meters
-  Riparian Setbacks
-  Alberta Wetland Inventory
-  Surface Water

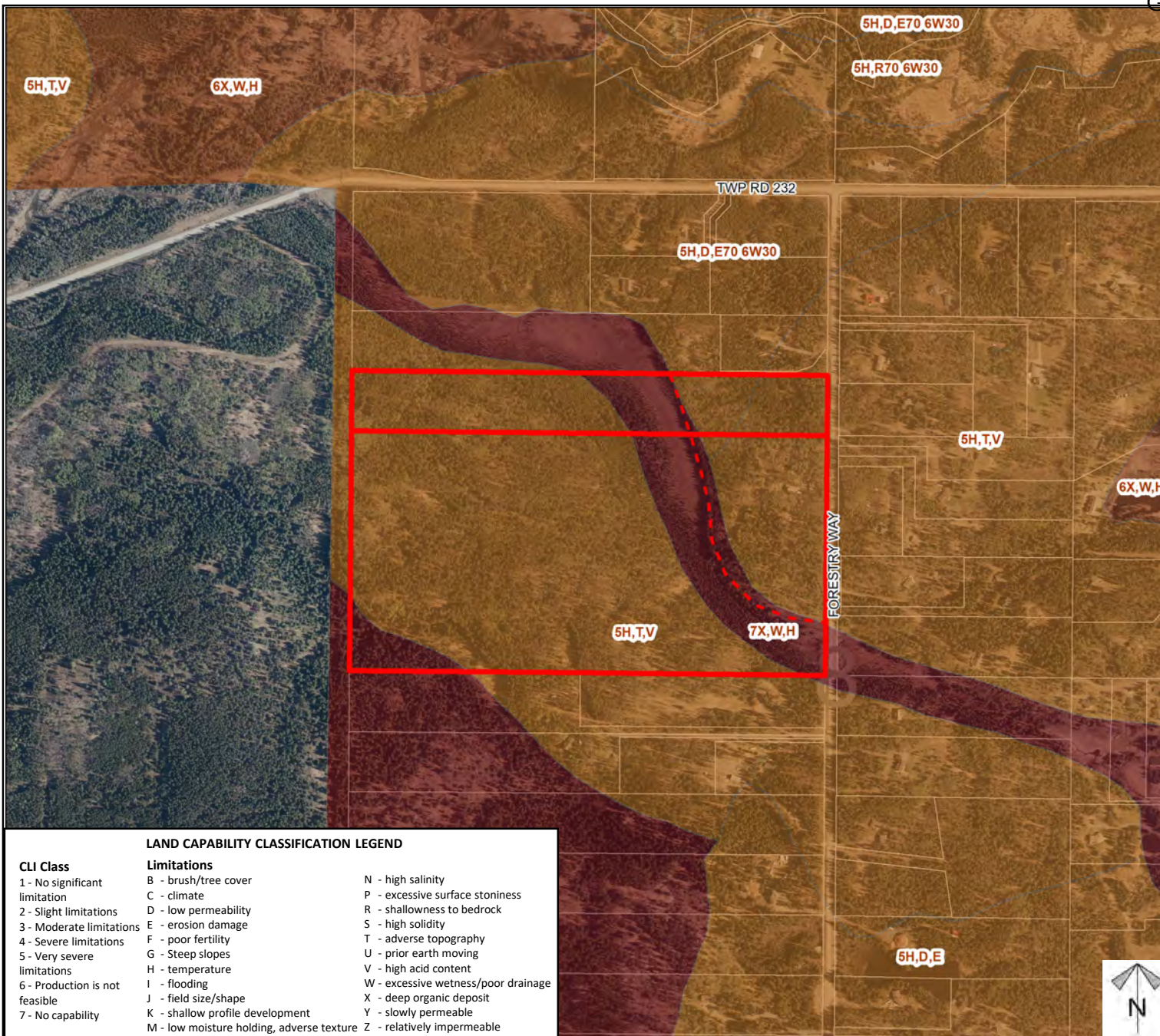
Division: 1
 Roll: 03908007/03908028
 File: PL20210138
 Printed: Aug 4, 2021
 Legal: A portion of NW-08-23-05-W05M



Soil Classifications

Redesignate Proposal

To redesignate a ± 5.62 ha (± 13.89 ac) portion of the subject lands from Agricultural, General District (A-GEN) to Agricultural, Small District (A-SML p 8.0) and a ± 5.52 ha (± 13.64 ac) portion of the subject lands from Agricultural, Small District (A-SML p 8.0) to Agricultural, General District (A-GEN) in order to facilitate a Boundary Adjustment.



LAND CAPABILITY CLASSIFICATION LEGEND

CLI Class	Limitations	
1 - No significant limitation	B - brush/tree cover	N - high salinity
2 - Slight limitations	C - climate	P - excessive surface stoniness
3 - Moderate limitations	D - low permeability	R - shallowness to bedrock
4 - Severe limitations	E - erosion damage	S - high solidity
5 - Very severe limitations	F - poor fertility	T - adverse topography
6 - Production is not feasible	G - Steep slopes	U - prior earth moving
7 - No capability	H - temperature	V - high acid content
	I - flooding	W - excessive wetness/poor drainage
	J - field size/shape	X - deep organic deposit
	K - shallow profile development	Y - slowly permeable
	M - low moisture holding, adverse texture	Z - relatively impermeable

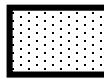
Division: 1
 Roll: 03908007/03908028
 File: PL20210138
 Printed: Aug 4, 2021
 Legal: A portion of NW-08-23-05-W05M

Schedule 'A'

**Bylaw
C-8232-2021**

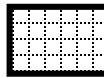
Amendment

FROM
Agricultural,
General District
(A-GEN)



TO
Agricultural, Small District
(A-SML p8.0)

FROM
Agricultural, Small
District
(A-SML p8.0)



TO
Agricultural, General District
(A-GEN)

A-SML (p 8.0) → A-GEN
5.52 ha
(13.64 ac)

A-GEN → A-SML (p 8.0)
5.62 ha
(13.89 ac)

FORESTRY WAY

