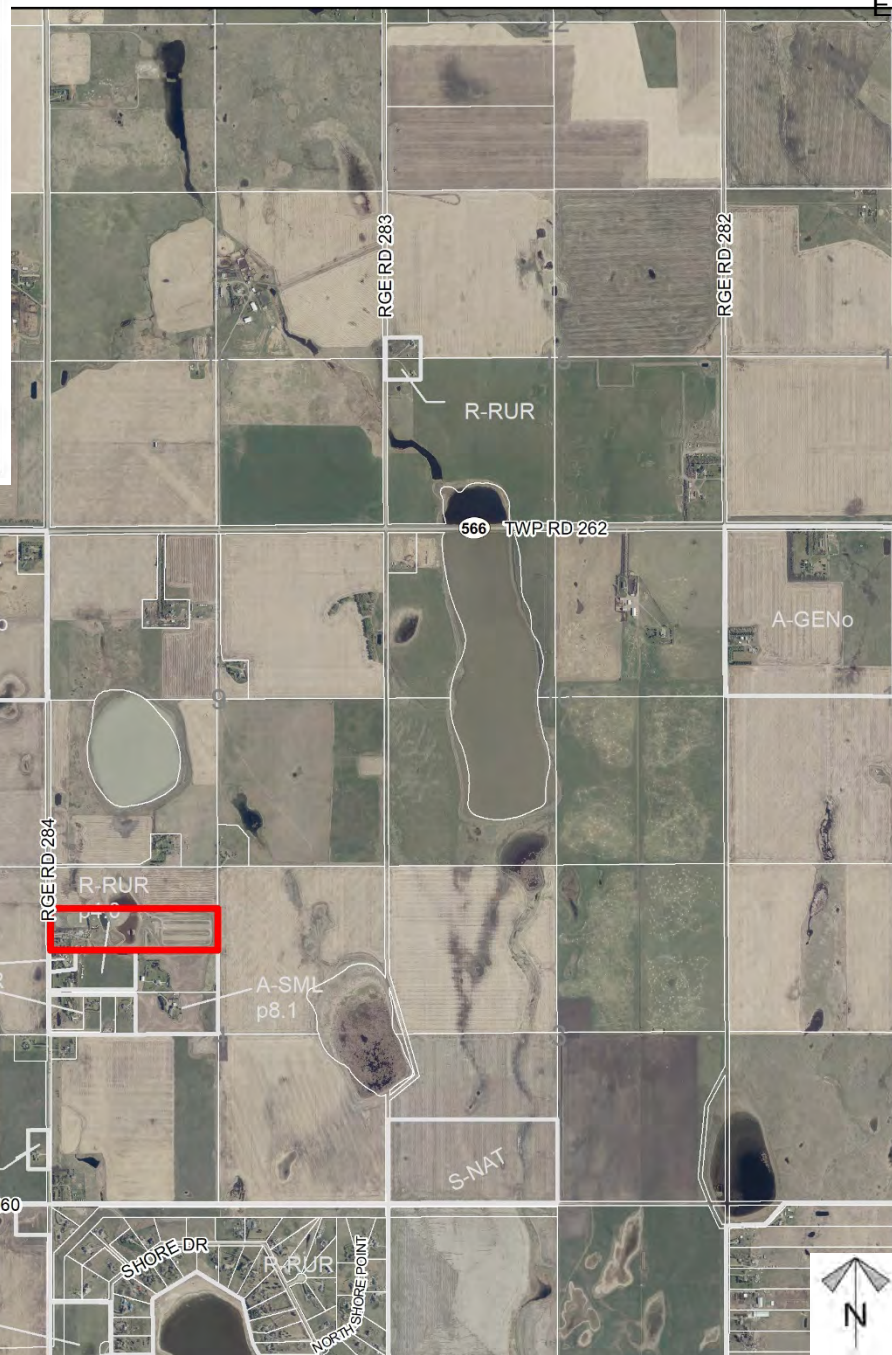
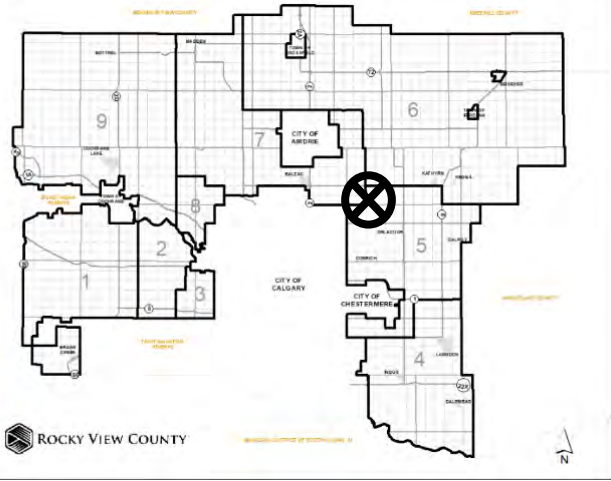


Location & Context

Redes/Subd Proposal

To redesignate a portion of NW-04-26-28-W04M from Agriculture General District (A-GEN) to Business Live-Work District (B-LWK) in order to accommodate a RV storage business.

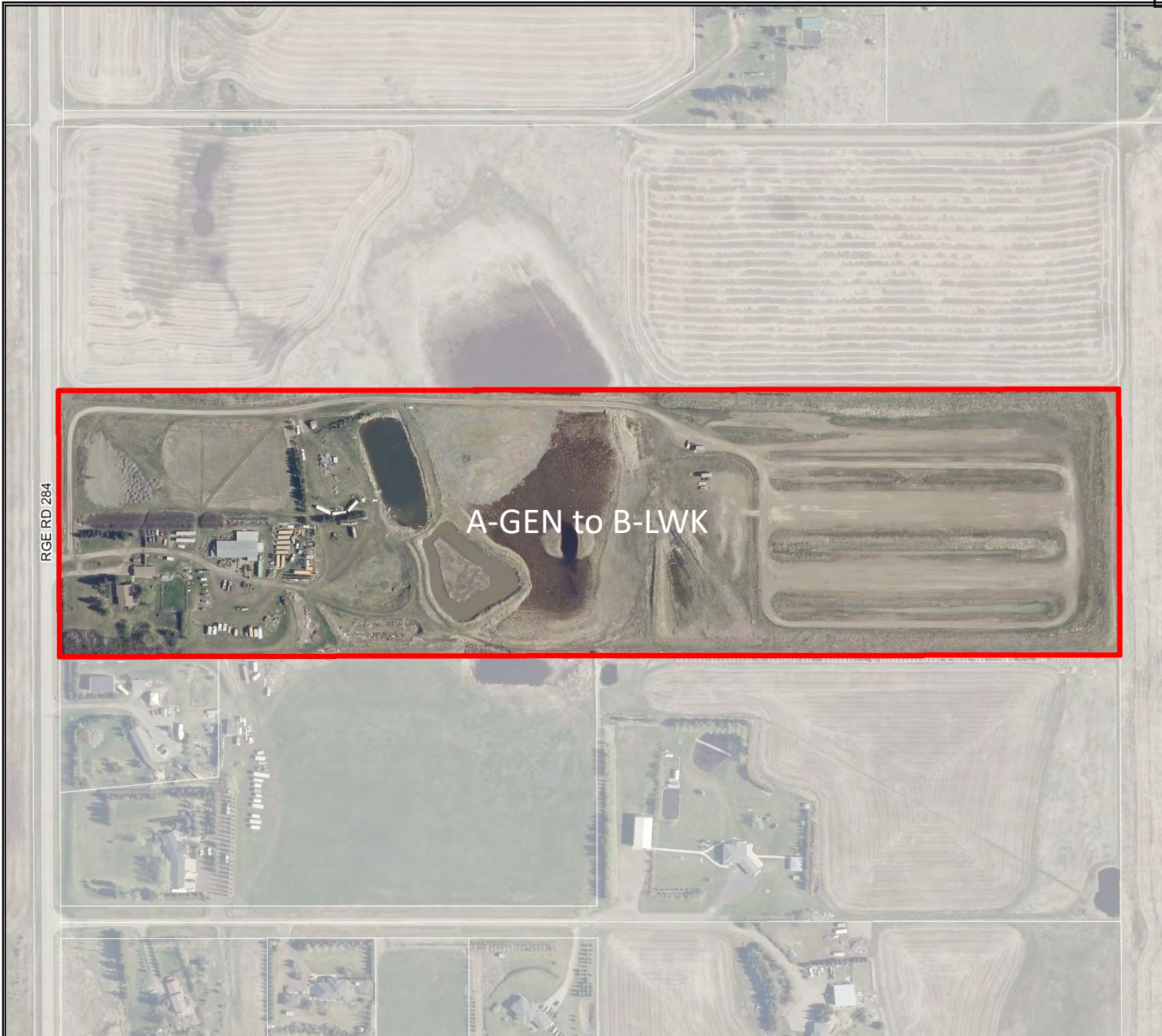
*Division: 05
Roll: 06304007
File: PL20190197
Printed: March 8, 2021
Legal: A portion of NW-04-26-28-W04M*



Development Proposal

Redes/Subd Proposal

To redesignate a portion of NW-04-26-28-W04M from Agriculture General District (A-GEN) to Business Live-Work District (B-LWK) in order to accommodate a RV storage business.



Division: 05
Roll: 06304007
File: PL20190197
Printed: March 8, 2021
Legal: A portion of NW-04-26-28-W04M

Environmental

Redes/Subd Proposal

To redesignate a portion of NW-04-26-28-W04M from Agriculture General District (A-GEN) to Business Live-Work District (B-LWK) in order to accommodate a RV storage business.



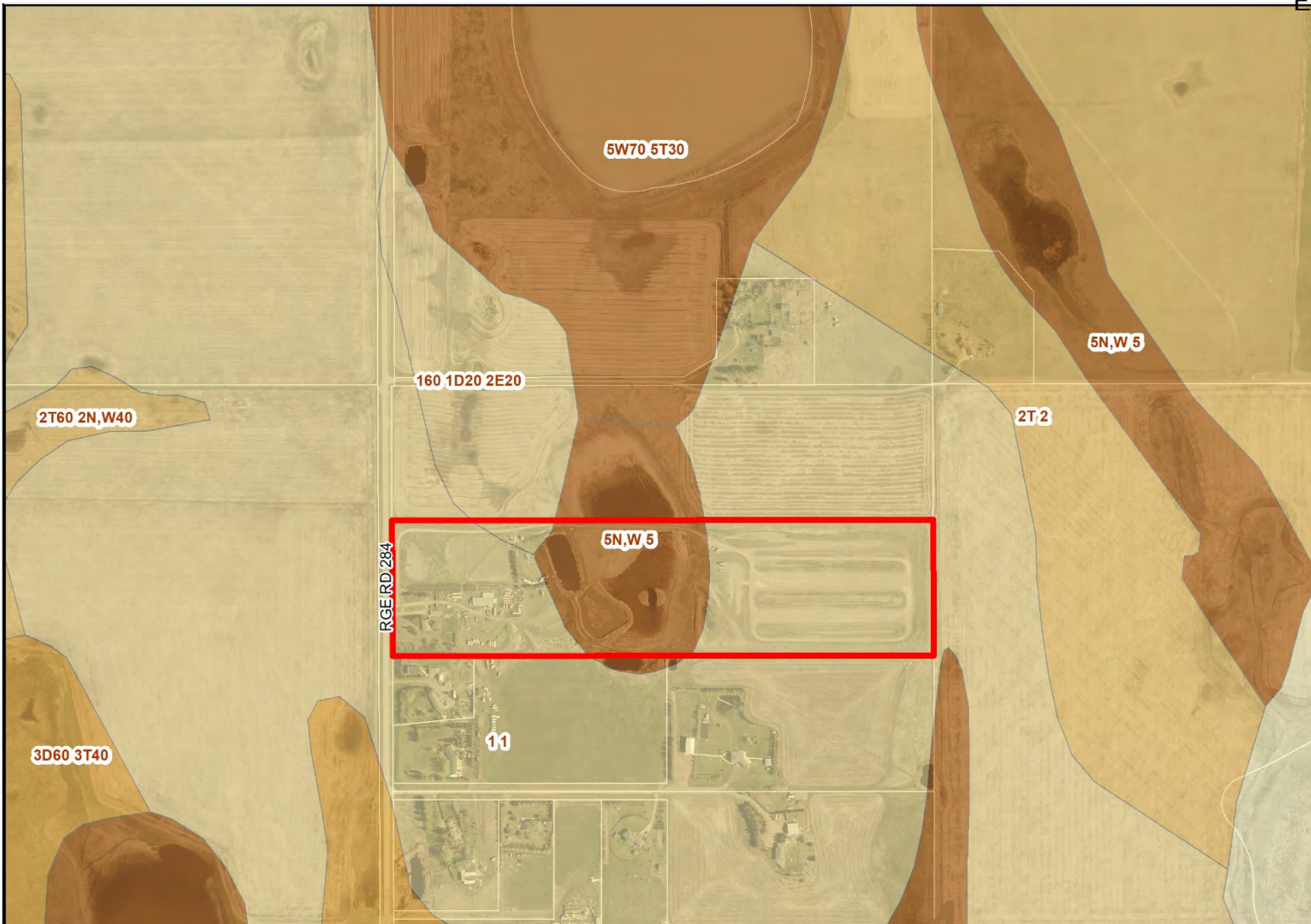
-  Subject Lands
-  Contour - 2 meters
-  Riparian Setbacks
-  Alberta Wetland Inventory
-  Surface Water

Division: 05
Roll: 06304007
File: PL20190197
Printed: March 8, 2021
Legal: A portion of NW-04-26-28-W04M

Soil Classifications

Redes/Subd Proposal

To redesignate a portion of NW-04-26-28-W04M from Agriculture General District (A-GEN) to Business Live-Work District (B-LWK) in order to accommodate a RV storage business.



LAND CAPABILITY CLASSIFICATION LEGEND		
CLI Class	Limitations	
1 - No significant limitation	B - brush/tree cover	N - high salinity
2 - Slight limitations	C - climate	P - excessive surface stoniness
3 - Moderate limitations	D - low permeability	R - shallowness to bedrock
4 - Severe limitations	E - erosion damage	S - high solidity
5 - Very severe limitations	F - poor fertility	T - adverse topography
6 - Production is not feasible	G - Steep slopes	U - prior earth moving
7 - No capability	H - temperature	V - high acid content
	I - flooding	W - excessive wetness/poor drainage
	J - field size/shape	X - deep organic deposit
	K - shallow profile development	Y - slowly permeable
	M - low moisture holding, adverse texture	Z - relatively impermeable





Division: 05
 Roll: 06304007
 File: PL20190197
 Printed: March 8, 2021
 Legal: A portion of NW-04-26-28-W04M

Landowner Circulation Area

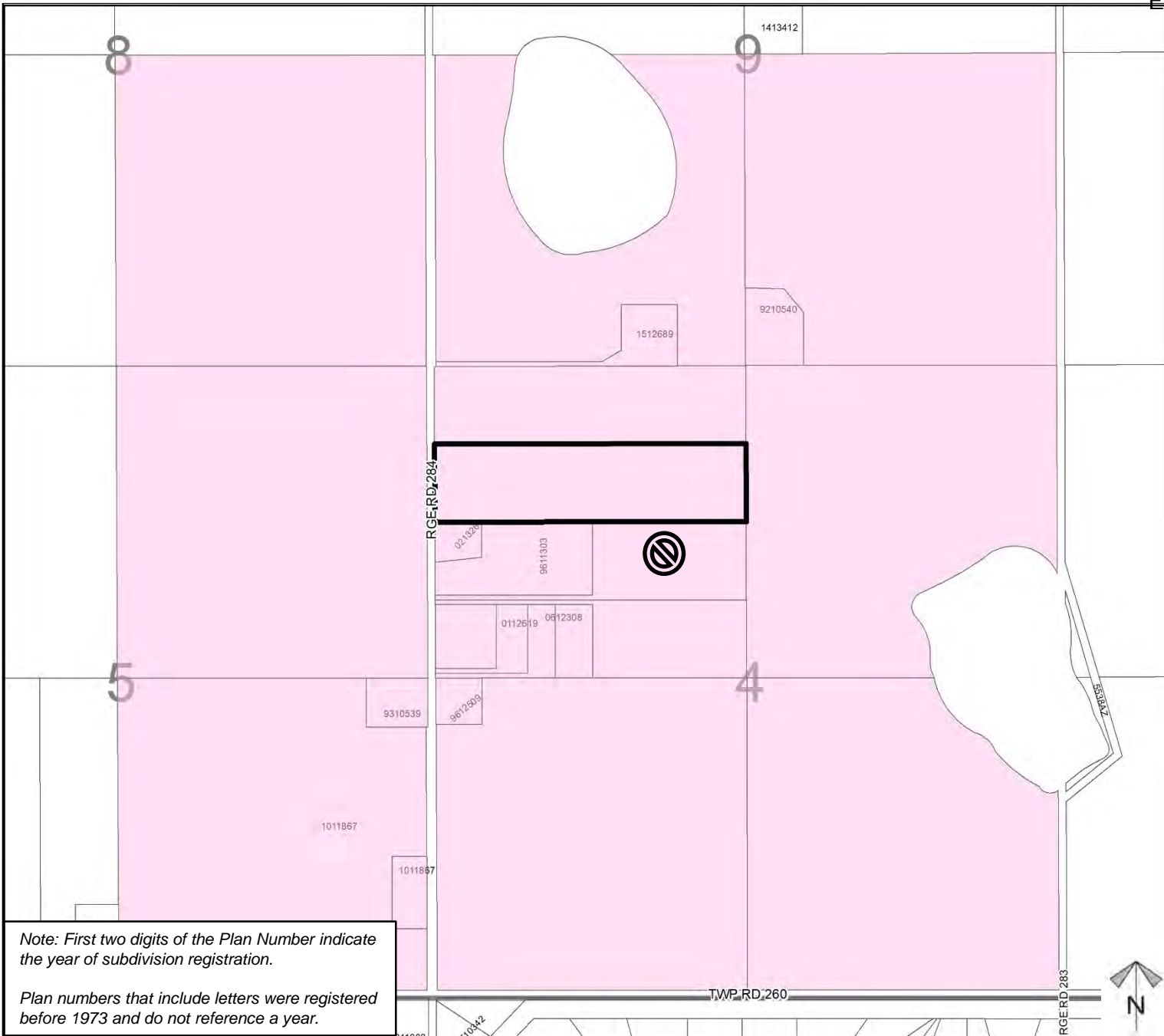
Redes/Subd Proposal

To redesignate a portion of NW-04-26-28-W04M from Agriculture General District (A-GEN) to Business Live-Work District (B-LWK) in order to accommodate a RV storage business.

Legend

- Support 
- Opposition 

Division: 05
Roll: 06304007
File: PL20190197
Printed: March 8, 2021
Legal: A portion of NW-04-26-28-W04M



Note: First two digits of the Plan Number indicate the year of subdivision registration.

Plan numbers that include letters were registered before 1973 and do not reference a year.