

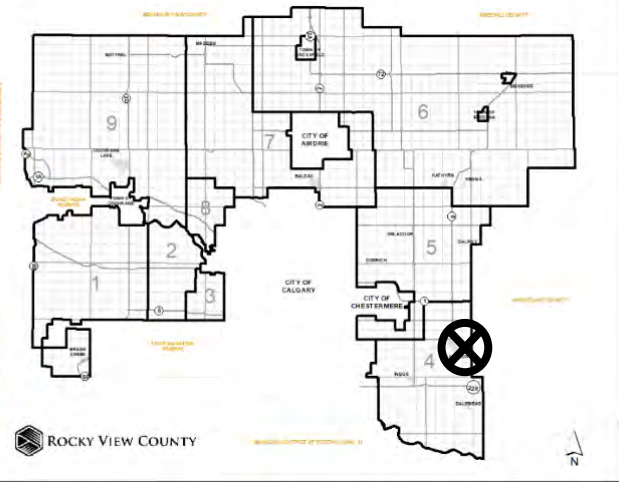


Location & Context

Redesignation Proposal

To redesignate the subject lands from Agricultural, General District (A-GEN) to Agricultural, Small District (A-SML p.16.5) to accommodate a future subdivision.

Division: 04
Roll: 03213009
File: PL20210017
Printed: Feb 5, 2021
Legal: A portion of NE-13-23-27-W04M



Development Proposal

Redesignation Proposal

To redesignate the subject lands from Agricultural, General District (A-GEN) to Agricultural, Small District (A-SML p.16.5) to accommodate a future subdivision.

*Division: 04
Roll: 03213009
File: PL20210017
Printed: Feb 5, 2021
Legal: A portion of NE-13-23-27-W04M*

DEAD HORSE RD SE

BOUNDARY ROAD



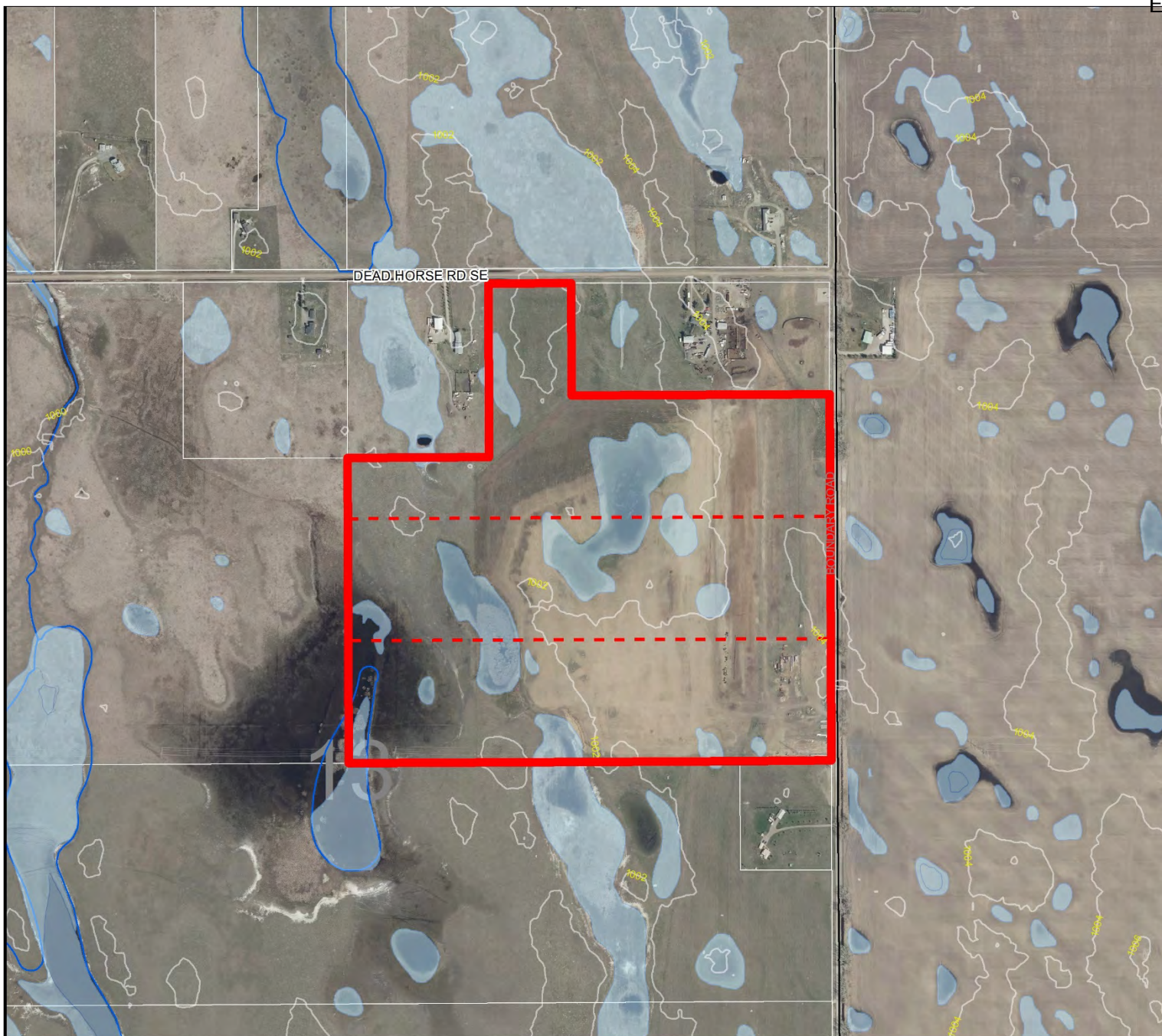
Environmental

Redesignation Proposal

To redesignate the subject lands from Agricultural, General District (A-GEN) to Agricultural, Small District (A-SML p.16.5) to accommodate a future subdivision.

-  Subject Lands
-  Contour - 2 meters
-  Riparian Setbacks
-  Alberta Wetland Inventory
-  Surface Water

Division: 04
Roll: 03213009
File: PL20210017
Printed: Feb 5, 2021
Legal: A portion of NE-13-23-27-W04M

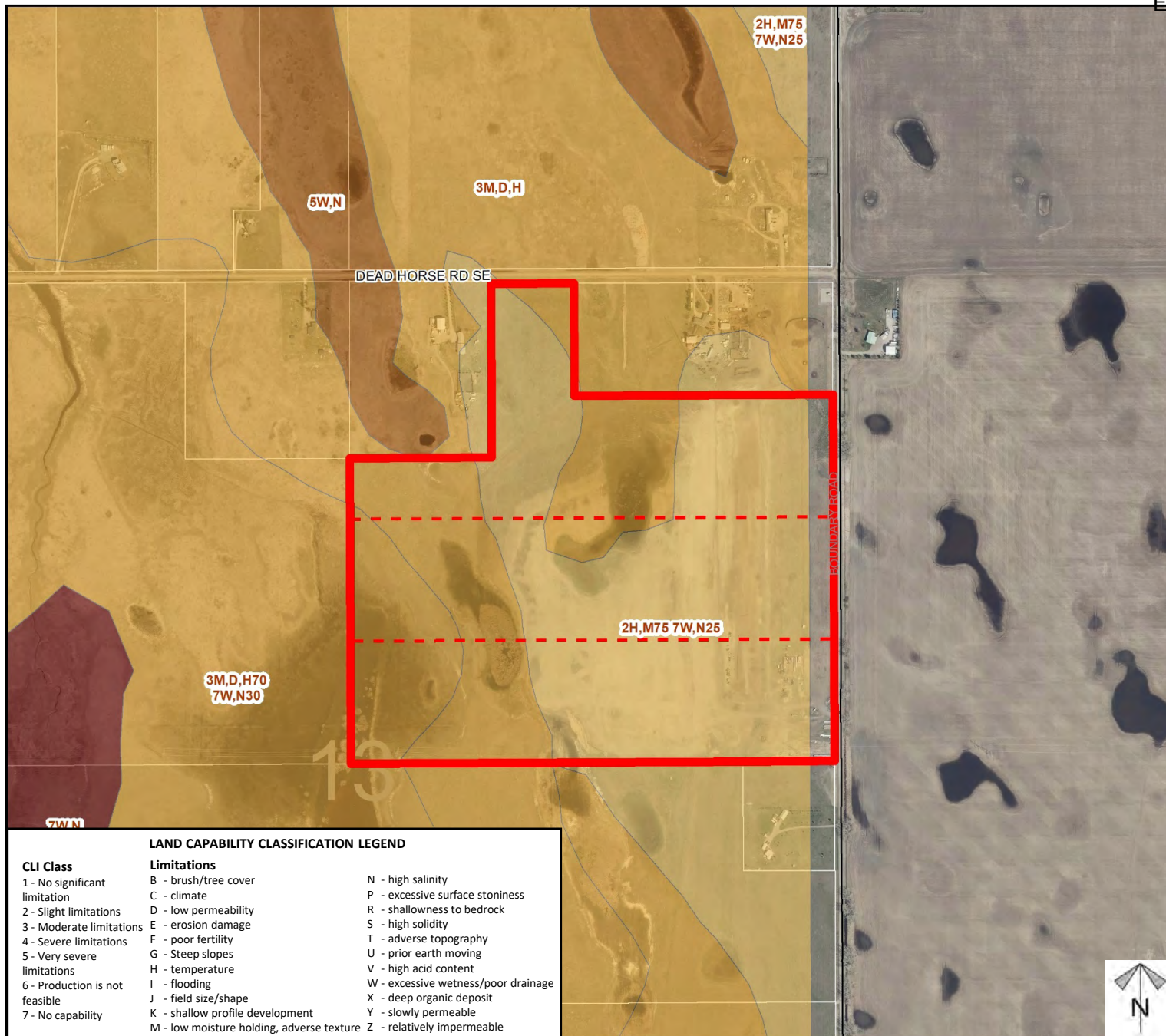




Soil Classifications

Redesignation Proposal

To redesignate the subject lands from Agricultural, General District (A-GEN) to Agricultural, Small District (A-SML p.16.5) to accommodate a future subdivision.



LAND CAPABILITY CLASSIFICATION LEGEND

CLI Class

- 1 - No significant limitation
- 2 - Slight limitations
- 3 - Moderate limitations
- 4 - Severe limitations
- 5 - Very severe limitations
- 6 - Production is not feasible
- 7 - No capability

Limitations

- B - brush/tree cover
- C - climate
- D - low permeability
- E - erosion damage
- F - poor fertility
- G - Steep slopes
- H - temperature
- I - flooding
- J - field size/shape
- K - shallow profile development
- M - low moisture holding, adverse texture
- N - high salinity
- P - excessive surface stoniness
- R - shallowness to bedrock
- S - high solidity
- T - adverse topography
- U - prior earth moving
- V - high acid content
- W - excessive wetness/poor drainage
- X - deep organic deposit
- Y - slowly permeable
- Z - relatively impermeable

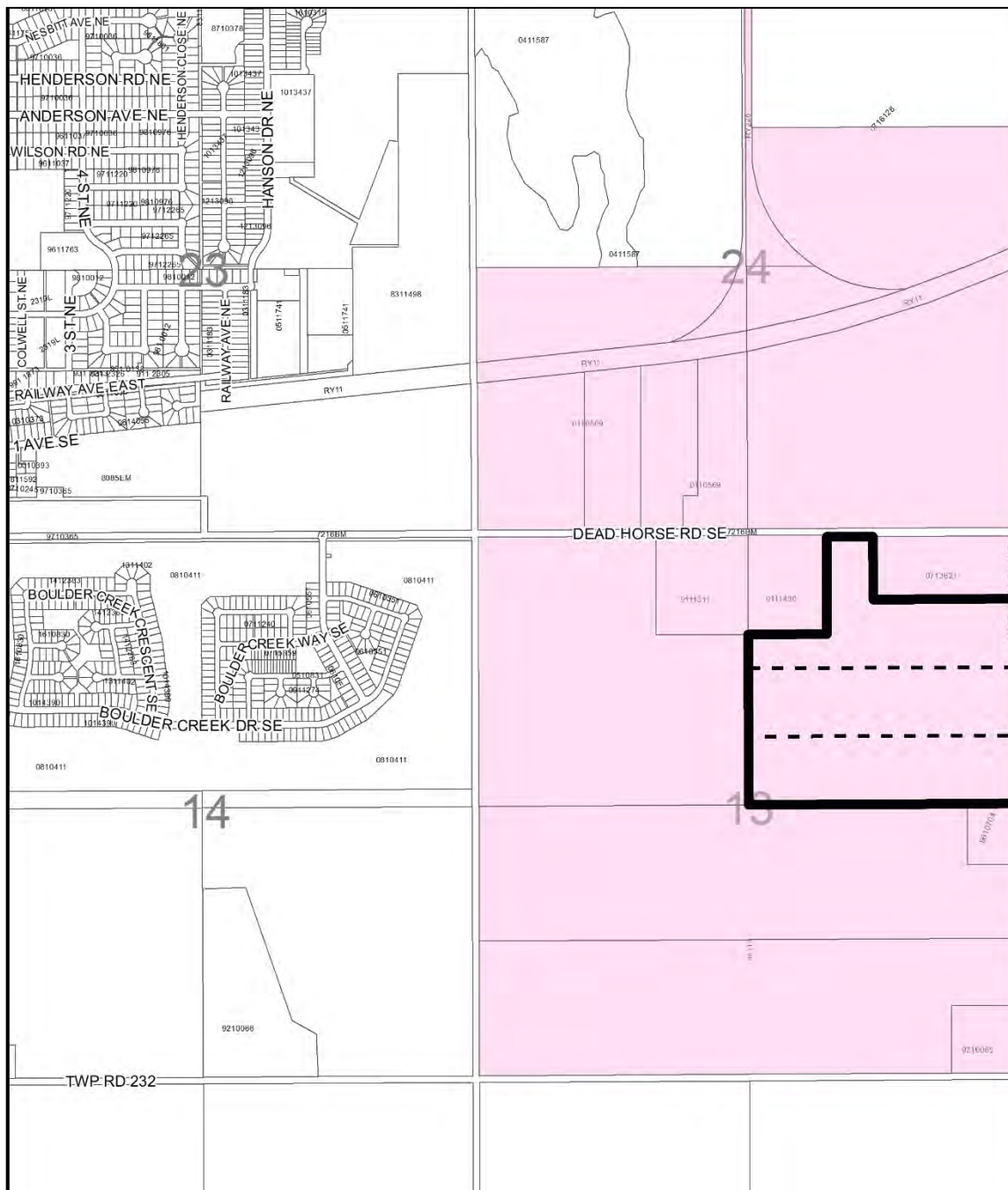
Division: 04
Roll: 03213009
File: PL20210017
Printed: Feb 5, 2021
Legal: A portion of NE-13-23-27-W04M



Landowner Circulation Area

Redesignation Proposal

To redesignate the subject lands from Agricultural, General District (A-GEN) to Agricultural, Small District (A-SML p.16.5) to accommodate a future subdivision.



TP23

Legend

Support



Opposition



Division: 04
Roll: 03213009
File: PL20210017
Printed: Feb 5, 2021
Legal: A portion of NE-13-23-27-W04M