

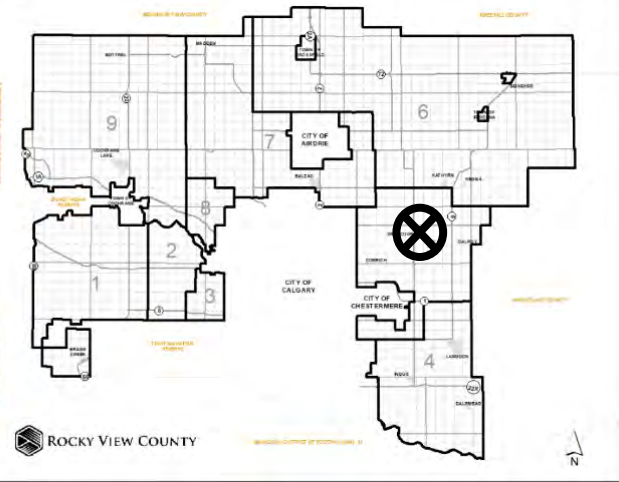


## Location & Context

### Redesignation Proposal

To redesignate a portion of the subject lands from Agricultural, Small Parcel District (A-SML p8.1) to Residential, Country Residential District (R-CRD) in order to facilitate the creation of 4 new lots with lot size of  $\pm 0.80$  hectares ( $\pm 2.00$  acres) and one remainder lot of  $\pm 4.85$  hectares ( $\pm 12.00$  acres).

Division: 5  
Roll: 05220009  
File: PL20210107  
Printed: June 7, 2021  
Legal: A portion of NE-20-25-27-W04M





## Development Proposal

### Redesignation Proposal

To redesignate a portion of the subject lands from Agricultural, Small Parcel District (A-SML p8.1) to Residential, Country Residential District, (R-CRD) in order to facilitate the creation of 4 new lots with lot size of  $\pm 0.80$  hectares ( $\pm 2.00$  acres) and one remainder lot of  $\pm 4.85$  hectares ( $\pm 12.00$  acres).



A-SML p8.1  $\rightarrow$  R-CRD  
 $\pm 3.20$  hectares  
 $\pm 8.00$  acres

$\pm 4.85$  hectares  
 $\pm 12.00$  acres

RGE RD 274



Division: 5  
 Roll: 05220009  
 File: PL20210107  
 Printed: June 7, 2021  
 Legal: A portion of NE-20-25-27-W04M





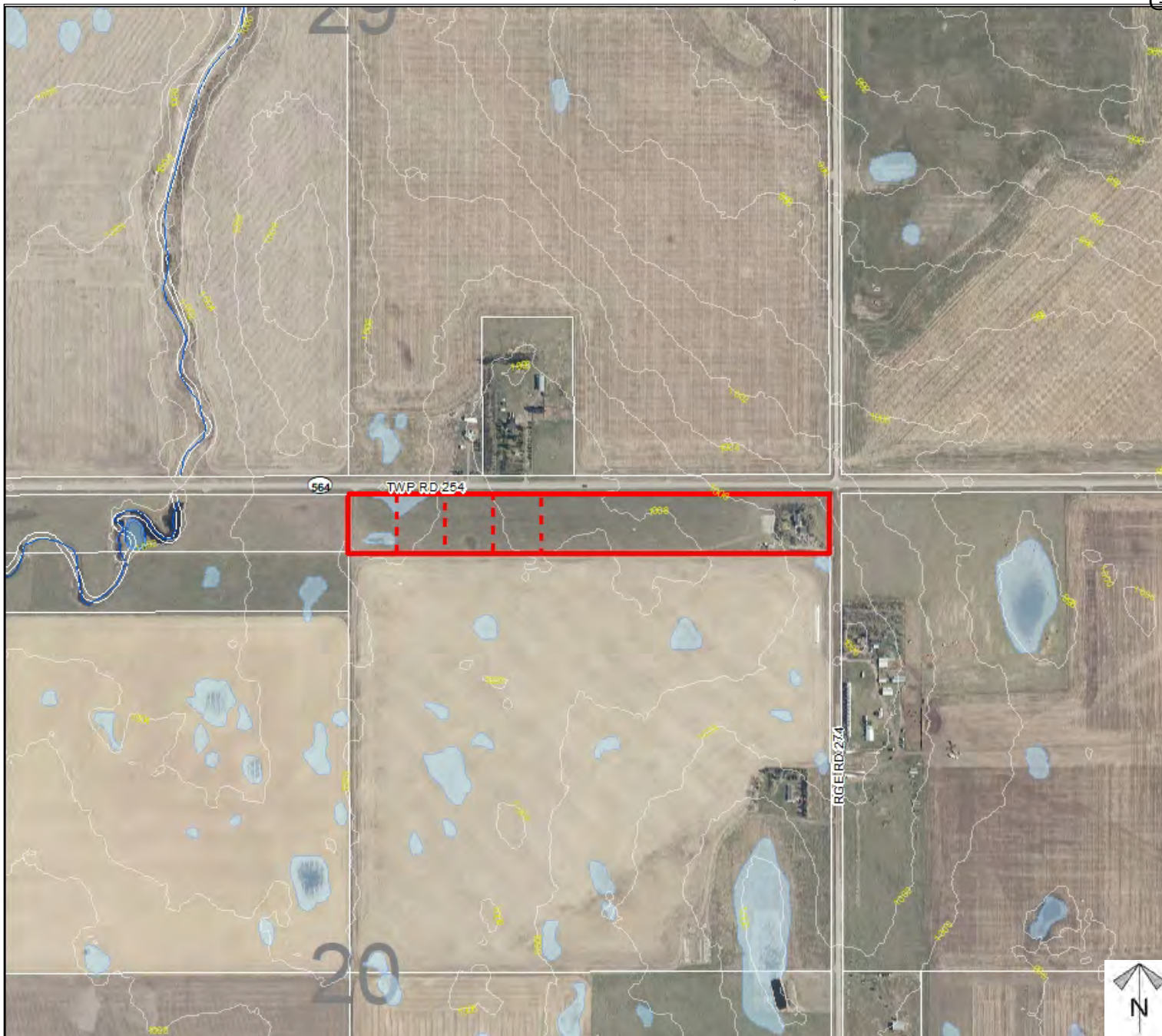
## Environmental

### Redesignation Proposal

To redesignate a portion of the subject lands from Agricultural, Small Parcel District (A-SML p8.1) to Residential, Country Residential District, (R-CRD) in order to facilitate the creation of 4 new lots with lot size of  $\pm 0.80$  hectares ( $\pm 2.00$  acres) and one remainder lot of  $\pm 4.85$  hectares ( $\pm 12.00$  acres).

-  Subject Lands
-  Contour - 2 meters
-  Riparian Setbacks
-  Alberta Wetland Inventory
-  Surface Water

Division: 5  
Roll: 05220009  
File: PL20210107  
Printed: June 7, 2021  
Legal: A portion of NE-20-25-27-W04M

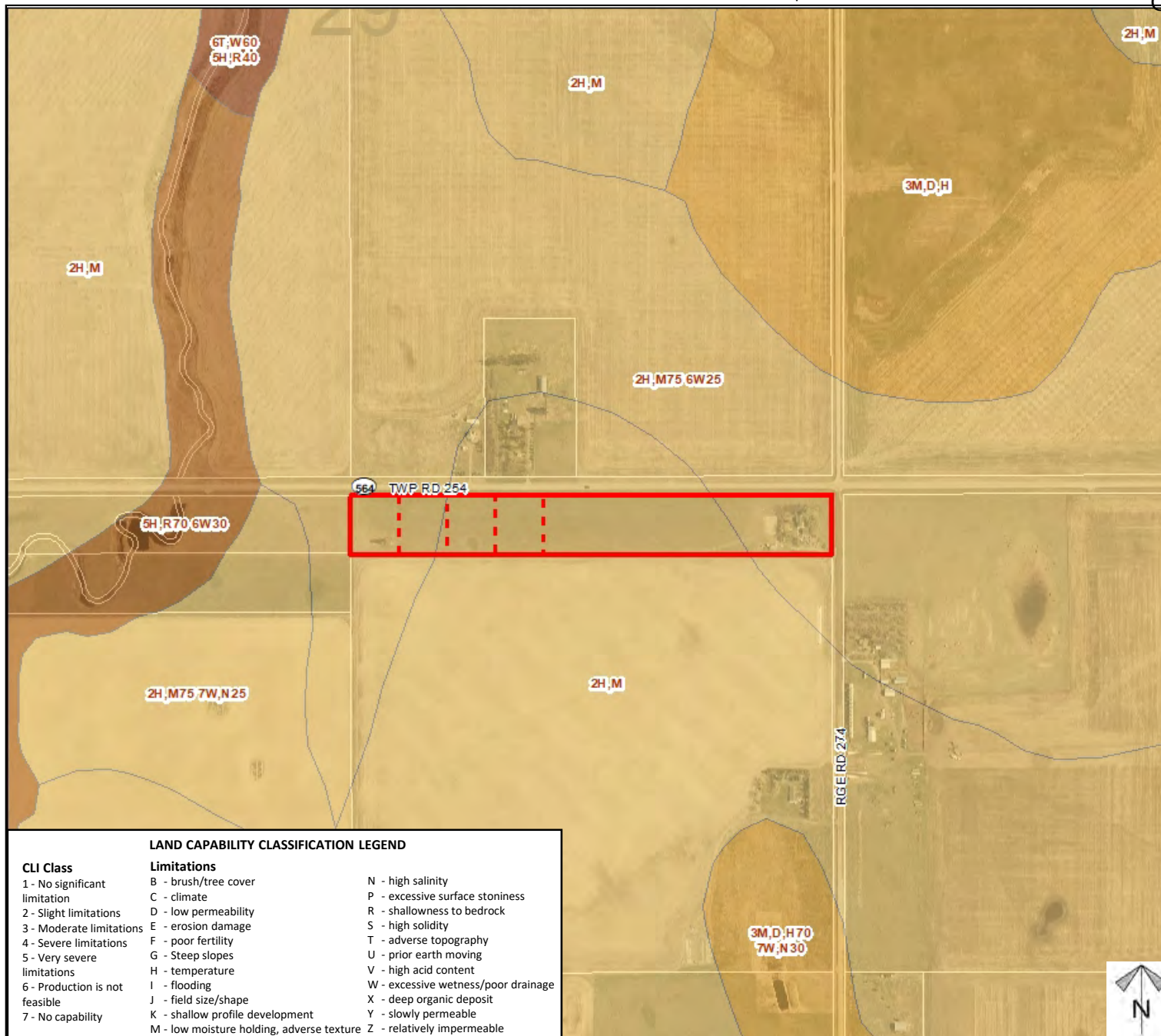




## Soil Classifications

### Redesignation Proposal

To redesignate a portion of the subject lands from Agricultural, Small Parcel District (A-SML p8.1) to Residential, Country Residential District, (R-CRD) in order to facilitate the creation of 4 new lots with lot size of  $\pm 0.80$  hectares ( $\pm 2.00$  acres) and one remainder lot of  $\pm 4.85$  hectares ( $\pm 12.00$  acres).



#### LAND CAPABILITY CLASSIFICATION LEGEND

CLI Class	Limitations	
1 - No significant limitation	B - brush/tree cover	N - high salinity
2 - Slight limitations	C - climate	P - excessive surface stoniness
3 - Moderate limitations	D - low permeability	R - shallowness to bedrock
4 - Severe limitations	E - erosion damage	S - high solidity
5 - Very severe limitations	F - poor fertility	T - adverse topography
6 - Production is not feasible	G - Steep slopes	U - prior earth moving
7 - No capability	H - temperature	V - high acid content
	I - flooding	W - excessive wetness/poor drainage
	J - field size/shape	X - deep organic deposit
	K - shallow profile development	Y - slowly permeable
	M - low moisture holding, adverse texture	Z - relatively impermeable

Division: 5

Roll: 05220009

File: PL20210107

Printed: June 7, 2021

Legal: A portion of NE-20-25-27-W04M





## Landowner Circulation Area

### Redesignation Proposal

To redesignate a portion of the subject lands from Agricultural, Small Parcel District (A-SML p8.1) to Residential, Country Residential District, (R-CRD) in order to facilitate the creation of 4 new lots with lot size of  $\pm 0.80$  hectares ( $\pm 2.00$  acres) and one remainder lot of  $\pm 4.85$  hectares ( $\pm 12.00$  acres).

### Legend

Support



Not Support



Division: 5

Roll: 05220009

File: PL20210107

Printed: June 7, 2021

Legal: A portion of NE-20-25-27-W04M

