

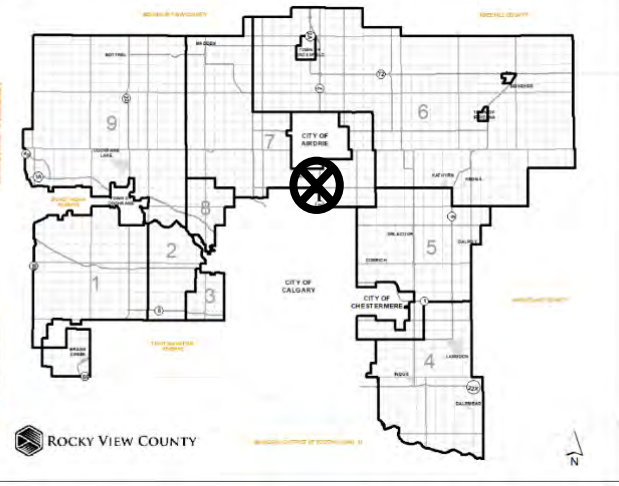


Location & Context

Redesignation Proposal

To redesignate the subject lands from Business, Recreation District (B-REC) and Direct Control District 150 (DC 150) to Commercial, Highway District (C-HWY) to accommodate light industrial or commercial uses.

Division: 7
Roll: 06513005
File: PL20210103
Printed: June 3, 2021
Legal: Block:2 Plan:9310884
within NE-13-26-01-W05M



Development Proposal

Redesignation Proposal

To redesignate the subject lands from Business, Recreation District (B-REC) and Direct Control District 150 (DC 150) to Commercial, Highway District (C-HWY) to accommodate light industrial or commercial uses.



Division: 7
 Roll: 06513005
 File: PL20210103
 Printed: June 3, 2021
 Legal: Block:2 Plan:9310884
 within NE-13-26-01-W05M



Environmental

Redesignation Proposal

To redesignate the subject lands from Business, Recreation District (B-REC) and Direct Control District 150 (DC 150) to Commercial, Highway District (C-HWY) to accommodate light industrial or commercial uses.

-  Subject Lands
-  Contour - 2 meters
-  Riparian Setbacks
-  Alberta Wetland Inventory
-  Surface Water

Division: 7
 Roll: 06513005
 File: PL20210103
 Printed: June 3, 2021
 Legal: Block:2 Plan:9310884
 within NE-13-26-01-W05M

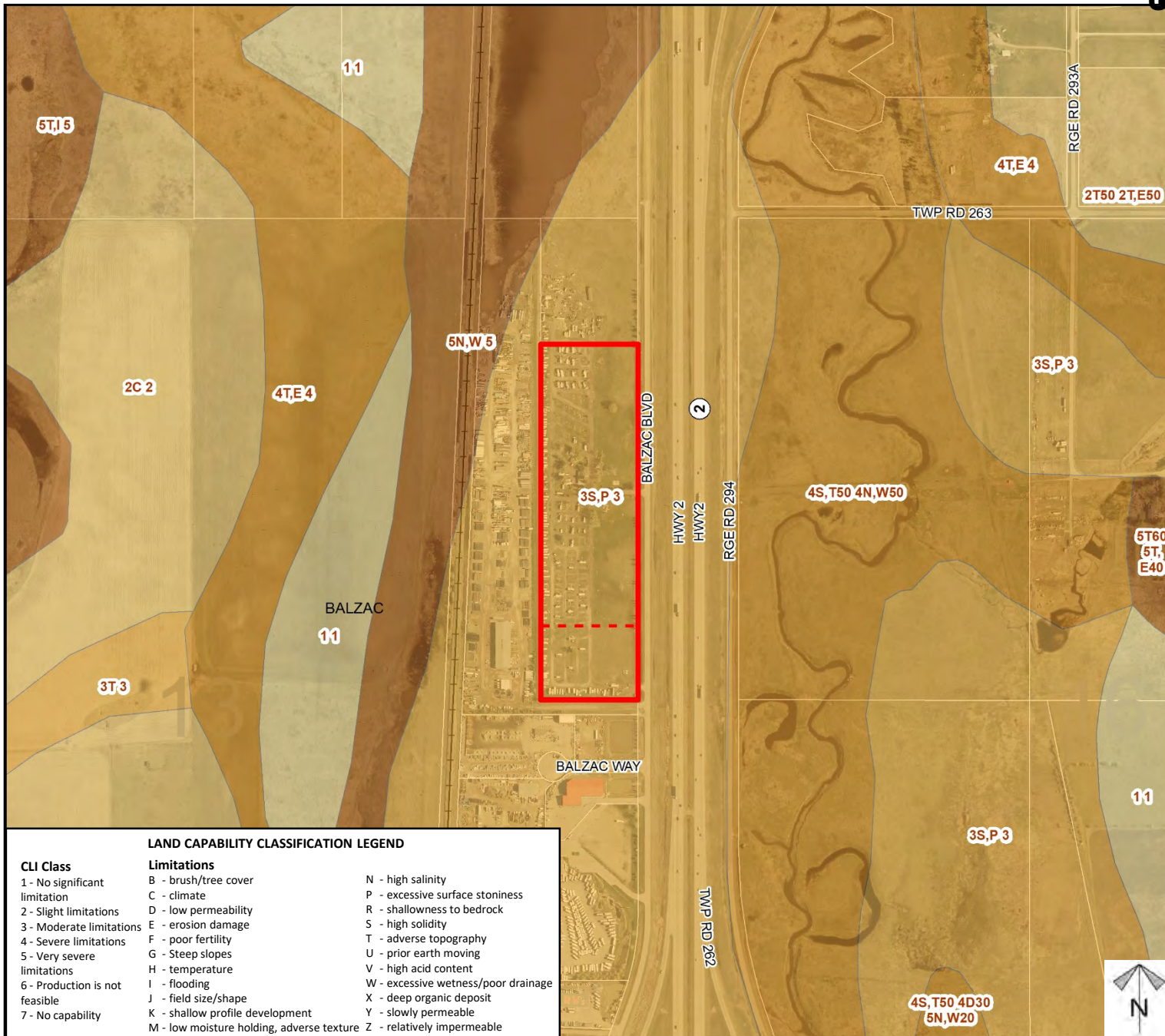




Soil Classifications

Redesignation Proposal

To redesignate the subject lands from Business, Recreation District (B-REC) and Direct Control District 150 (DC 150) to Commercial, Highway District (C-HWY) to accommodate light industrial or commercial uses.



LAND CAPABILITY CLASSIFICATION LEGEND

CLI Class

- 1 - No significant limitation
- 2 - Slight limitations
- 3 - Moderate limitations
- 4 - Severe limitations
- 5 - Very severe limitations
- 6 - Production is not feasible
- 7 - No capability

Limitations

- B - brush/tree cover
- C - climate
- D - low permeability
- E - erosion damage
- F - poor fertility
- G - Steep slopes
- H - temperature
- I - flooding
- J - field size/shape
- K - shallow profile development
- M - low moisture holding, adverse texture
- N - high salinity
- P - excessive surface stoniness
- R - shallowness to bedrock
- S - high solidity
- T - adverse topography
- U - prior earth moving
- V - high acid content
- W - excessive wetness/poor drainage
- X - deep organic deposit
- Y - slowly permeable
- Z - relatively impermeable

Division: 7

Roll: 06513005

File: PL20210103

Printed: June 3, 2021

Legal: Block:2 Plan:9310884
within NE-13-26-01-W05M

Redesignation Proposal

To redesignate the subject lands from Business, Recreation District (B-REC) and Direct Control District 150 (DC 150) to Commercial, Highway District (C-HWY) to accommodate light industrial or commercial uses.

Legend

Support



Not Support



Division: 7
Roll: 06513005
File: PL20210103
Printed: June 3, 2021
Legal: Block:2 Plan:9310884
within NE-13-26-01-W05M

