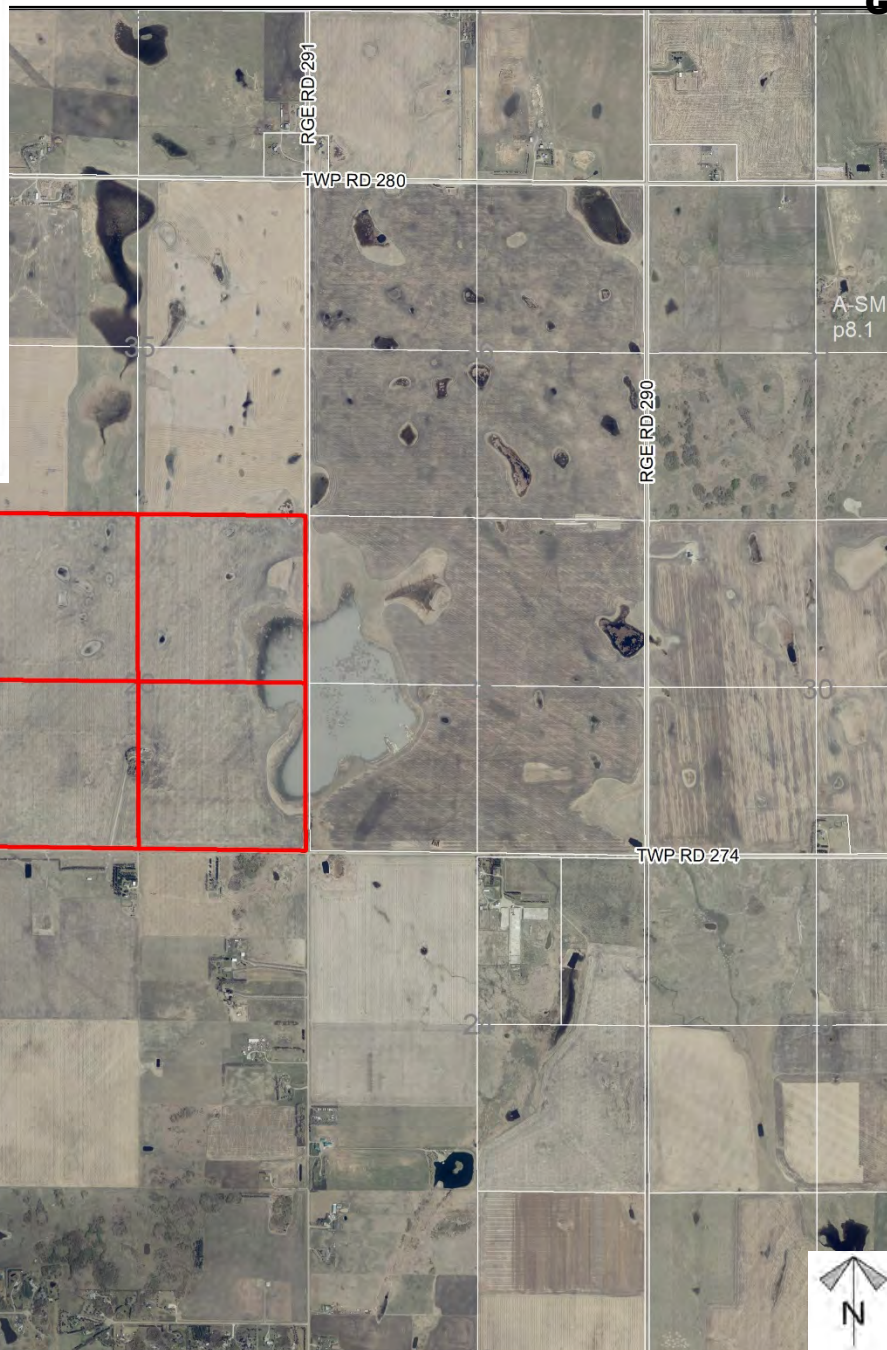
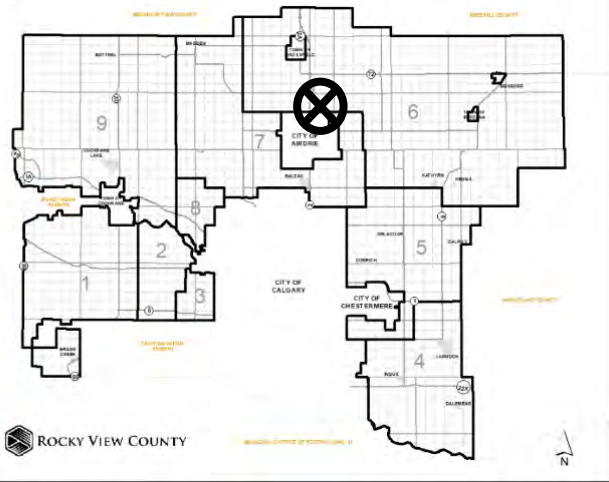


## Location & Context

### Redesignation Proposal

Redesignation of  $\pm 259$ ha ( $\pm 640$  acres) – four quarter sections – from Agricultural, General District (A-GEN) to Direct Control (DC) to allow for a Solar Farm.

Division: 6  
 Roll: 07426001/2/3/4  
 File: PL20210102  
 Legal: NW/NE/SE/SW-26-  
 27-29-W04M  
 Printed: June 24, 2021





## Development Proposal

### Redesignation Proposal

Redesignation of  $\pm 259$ ha ( $\pm 640$  acres) – four quarter sections – from Agricultural, General (A-GEN) District (A-GEN) to Direct Control (DC) to allow for a Solar Farm.

Agricultural, General (A-GEN)  
to Direct Control (DC)

Agricultural, General (A-GEN)  
to Direct Control (DC)

Agricultural, General (A-GEN)  
to Direct Control (DC)

Agricultural, General (A-GEN)  
to Direct Control (DC)

RGE RD 292

AIRDRIE



Division: 6  
Roll: 07426001/2/3/4  
File: PL20210102  
Legal: NW/NE/SE/SW-26-  
27-29-W04M  
Printed: June 24, 2021





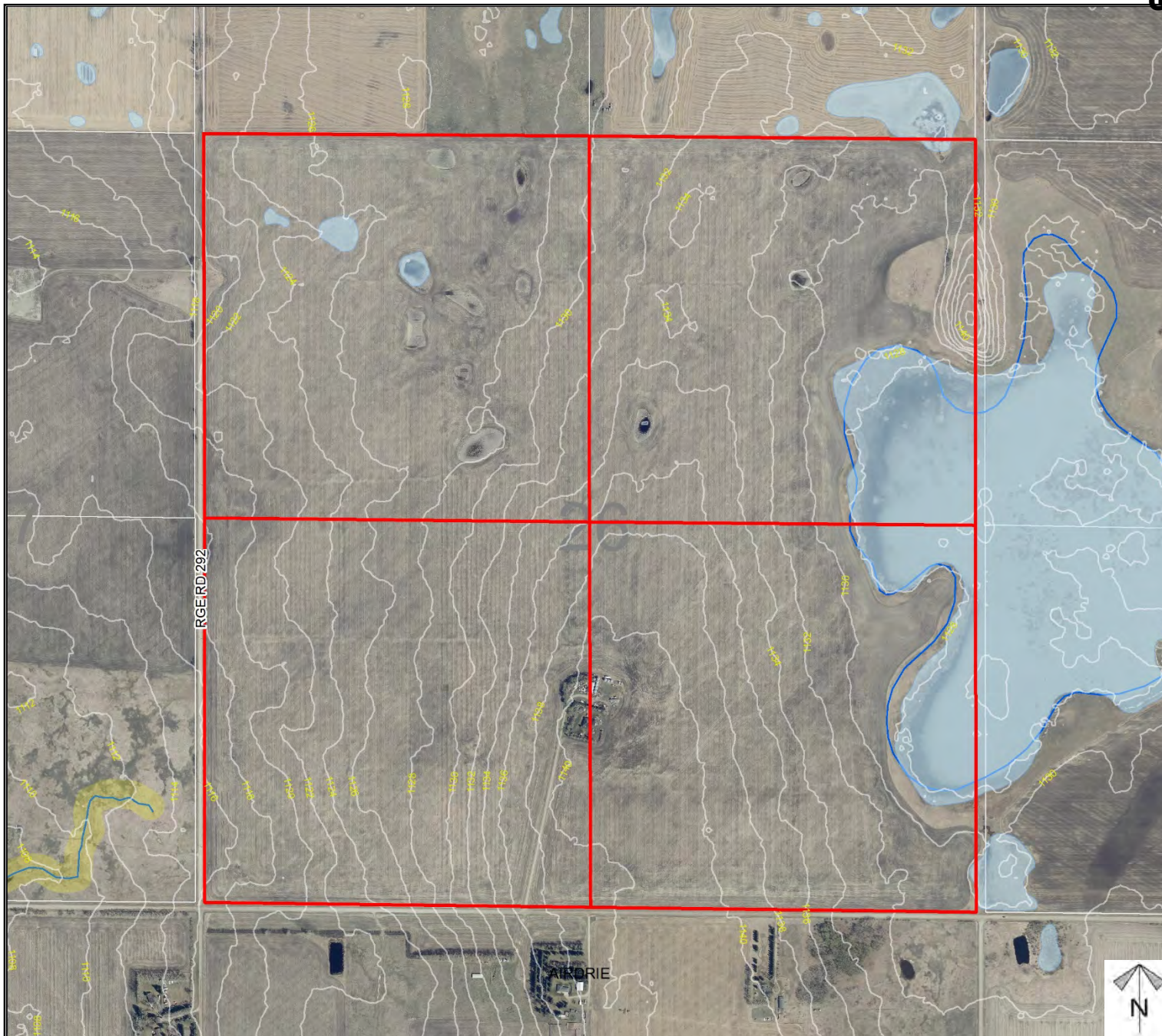
## Environmental

**Redesignation Proposal**

Redesignation of  $\pm 259$ ha ( $\pm 640$  acres) – four quarter sections – from Agricultural, General District (A-GEN) to Direct Control (DC) to allow for a Solar Farm.

-  Subject Lands
-  Contour - 2 meters
-  Riparian Setbacks
-  Alberta Wetland Inventory
-  Surface Water

Division: 6  
 Roll: 07426001/2/3/4  
 File: PL20210102  
 Legal: NW/NE/SE/SW-26-  
 27-29-W04M  
 Printed: June 24, 2021



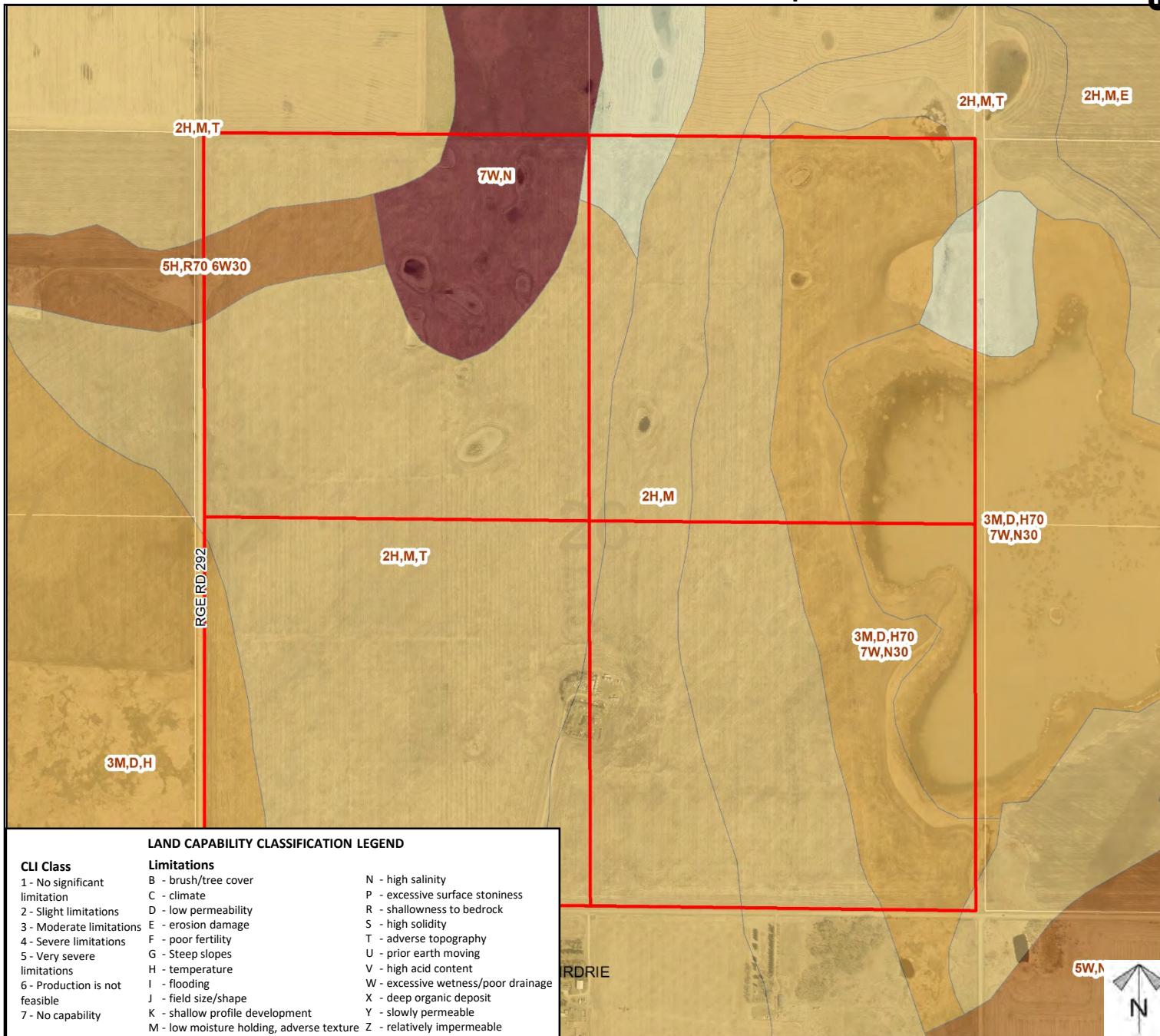




## Soil Classifications

### Redesignation Proposal

Redesignation of ±259ha (±640 acres) – four quarter sections – from Agricultural, General District (A-GEN) to Direct Control (DC) to allow for a Solar Farm.



#### LAND CAPABILITY CLASSIFICATION LEGEND

##### CLI Class

- 1 - No significant limitation
- 2 - Slight limitations
- 3 - Moderate limitations
- 4 - Severe limitations
- 5 - Very severe limitations
- 6 - Production is not feasible
- 7 - No capability

##### Limitations

- B - brush/tree cover
- C - climate
- D - low permeability
- E - erosion damage
- F - poor fertility
- G - Steep slopes
- H - temperature
- I - flooding
- J - field size/shape
- K - shallow profile development
- M - low moisture holding, adverse texture
- N - high salinity
- P - excessive surface stoniness
- R - shallowness to bedrock
- S - high solidity
- T - adverse topography
- U - prior earth moving
- V - high acid content
- W - excessive wetness/poor drainage
- X - deep organic deposit
- Y - slowly permeable
- Z - relatively impermeable

Division: 6

Roll: 07426001/2/3/4

File: PL20210102

Legal: NW/NE/SE/SW-26-27-29-W04M

Printed: June 24, 2021



## Landowner Circulation Area

### Redesignation Proposal

Redesignation of  $\pm 259$ ha ( $\pm 640$  acres) – four quarter sections – from Agricultural, General District (A-GEN) to Direct Control (DC) to allow for a Solar Farm.

### Legend

Support



Not Support



Division: 6  
Roll: 07426001/2/3/4  
File: PL20210102  
Legal: NW/NE/SE/SW-26-  
27-29-W04M  
Printed: June 24, 2021

