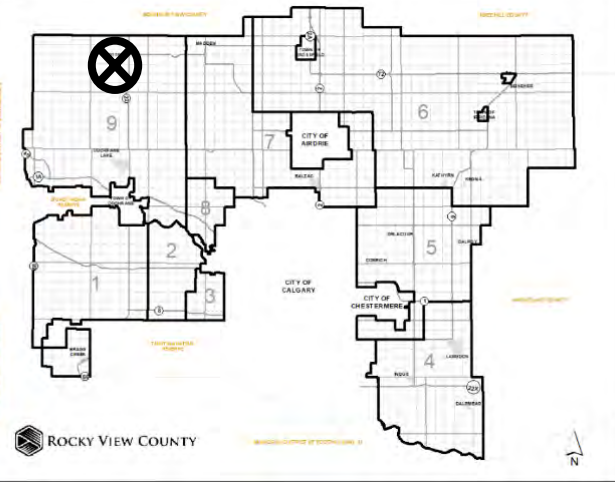


Location & Context

Redesignation Proposal

Redesignation of $\pm 1.62\text{ha}$ (± 4.00 acre) from Agricultural, General (A-GEN) to Residential, Rural District (R-RUR) to allow for the future subdivision of one $\pm 1.62\text{ha}$ (± 4.00 acre) parcel leaving a $\pm 29.95\text{ha}$ (± 74.00 acre) balance parcel.

Division: 9
 Roll: 08816005
 File: PL20210082
 Legal: A portion of NW-16-28-04-W05M
 Printed: May 14, 2021



Development Proposal

Redesignation Proposal

Redesignation of $\pm 1.62\text{ha}$ (± 4.00 acre) from Agricultural, General (A-GEN) to Residential, Rural District (R-RUR) to allow for the future subdivision of one $\pm 1.62\text{ha}$ (± 4.00 acre) parcel leaving a $\pm 29.95\text{ha}$ (± 74.00 acre) balance parcel.

TWP RD 283

A-GEN \rightarrow R-RUR
 $\pm 1.62\text{ha}$ (± 4.00 acre)

Division: 9
Roll: 08816005
File: PL20210082
Legal: A portion of NW-16-28-04-W05M
Printed: May 14, 2021



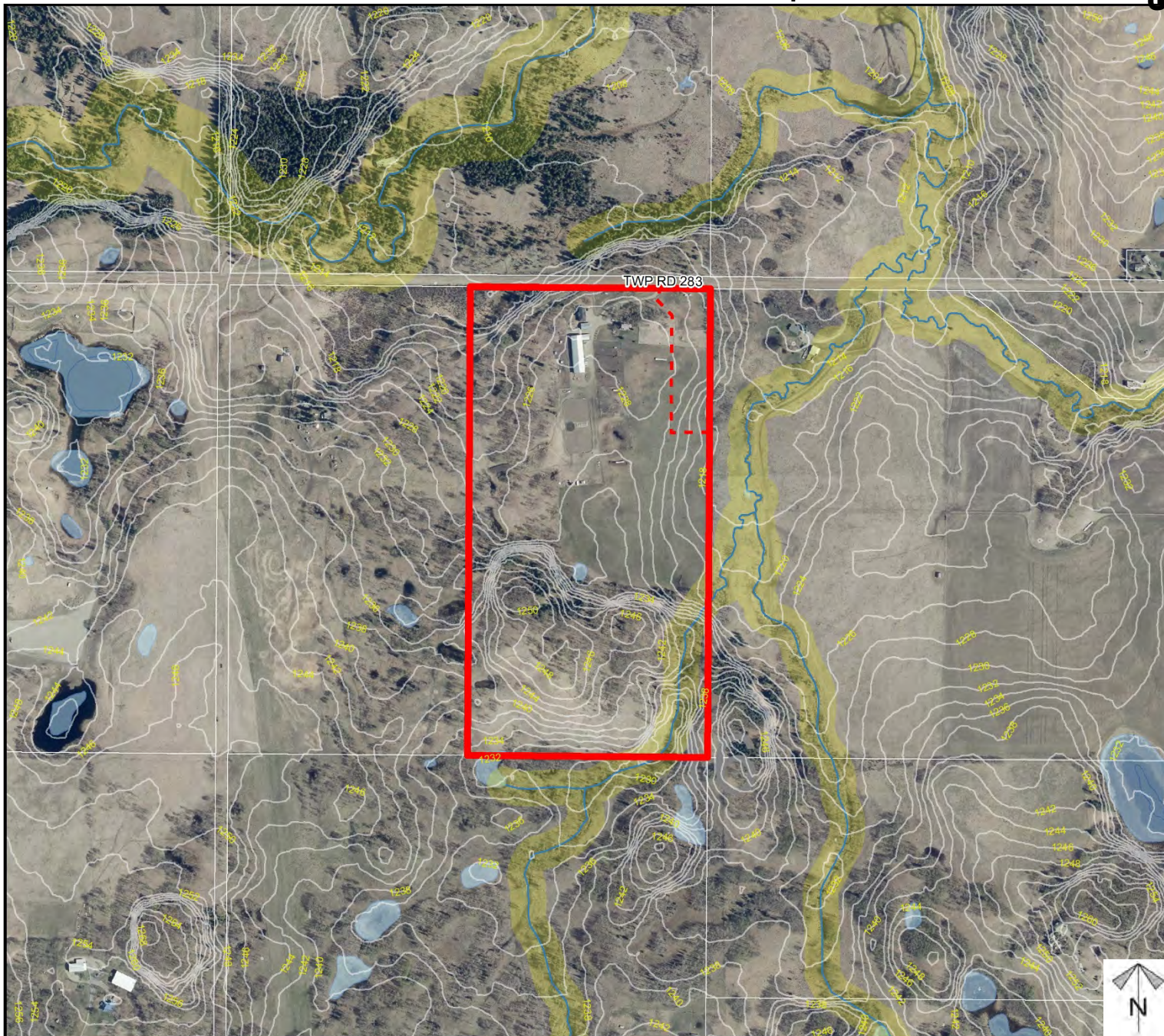
Environmental

Redesignation Proposal

Redesignation of $\pm 1.62\text{ha}$ (± 4.00 acre) from Agricultural, General (A-GEN) to Residential, Rural District (R-RUR) to allow for the future subdivision of one $\pm 1.62\text{ha}$ (± 4.00 acre) parcel leaving a $\pm 29.95\text{ha}$ (± 74.00 acre) balance parcel.

-  Subject Lands
-  Contour - 2 meters
-  Riparian Setbacks
-  Alberta Wetland Inventory
-  Surface Water

Division: 9
 Roll: 08816005
 File: PL20210082
 Legal: A portion of NW-16-28-04-W05M
 Printed: May 14, 2021

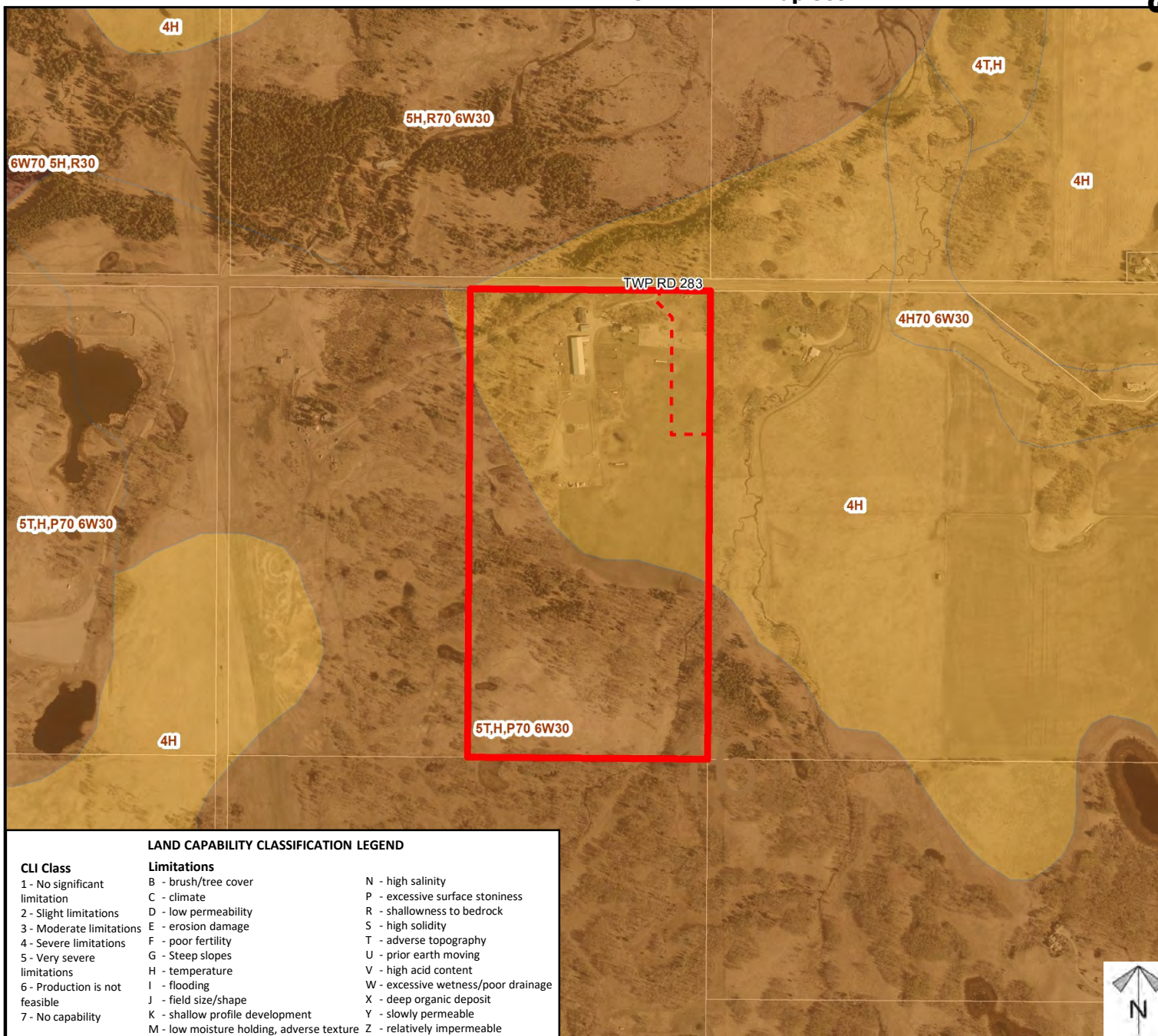




Soil Classifications

Redesignation Proposal

Redesignation of ± 1.62 ha (± 4.00 acre) from Agricultural, General (A-GEN) to Residential, Rural District (R-RUR) to allow for the future subdivision of one ± 1.62 ha (± 4.00 acre) parcel leaving a ± 29.95 ha (± 74.00 acre) balance parcel.



LAND CAPABILITY CLASSIFICATION LEGEND

CLI Class

- 1 - No significant limitation
- 2 - Slight limitations
- 3 - Moderate limitations
- 4 - Severe limitations
- 5 - Very severe limitations
- 6 - Production is not feasible
- 7 - No capability

Limitations

- B - brush/tree cover
- C - climate
- D - low permeability
- E - erosion damage
- F - poor fertility
- G - Steep slopes
- H - temperature
- I - flooding
- J - field size/shape
- K - shallow profile development
- M - low moisture holding, adverse texture
- N - high salinity
- P - excessive surface stoniness
- R - shallowness to bedrock
- S - high solidity
- T - adverse topography
- U - prior earth moving
- V - high acid content
- W - excessive wetness/poor drainage
- X - deep organic deposit
- Y - slowly permeable
- Z - relatively impermeable

Division: 9
Roll: 08816005
File: PL20210082
Legal: A portion of NW-16-28-04-W05M
Printed: May 14, 2021



Landowner Circulation Area

Redesignation Proposal

Redesignation of ± 1.62 ha (± 4.00 acre) from Agricultural, General (A-GEN) to Residential, Rural District (R-RUR) to allow for the future subdivision of one ± 1.62 ha (± 4.00 acre) parcel leaving a ± 29.95 ha (± 74.00 acre) balance parcel.

Legend

Support



Non-Support



Division: 9

Roll: 08816005

File: PL20210082

Legal: A portion of NW-16-28-04-W05M

Printed: May 14, 2021

