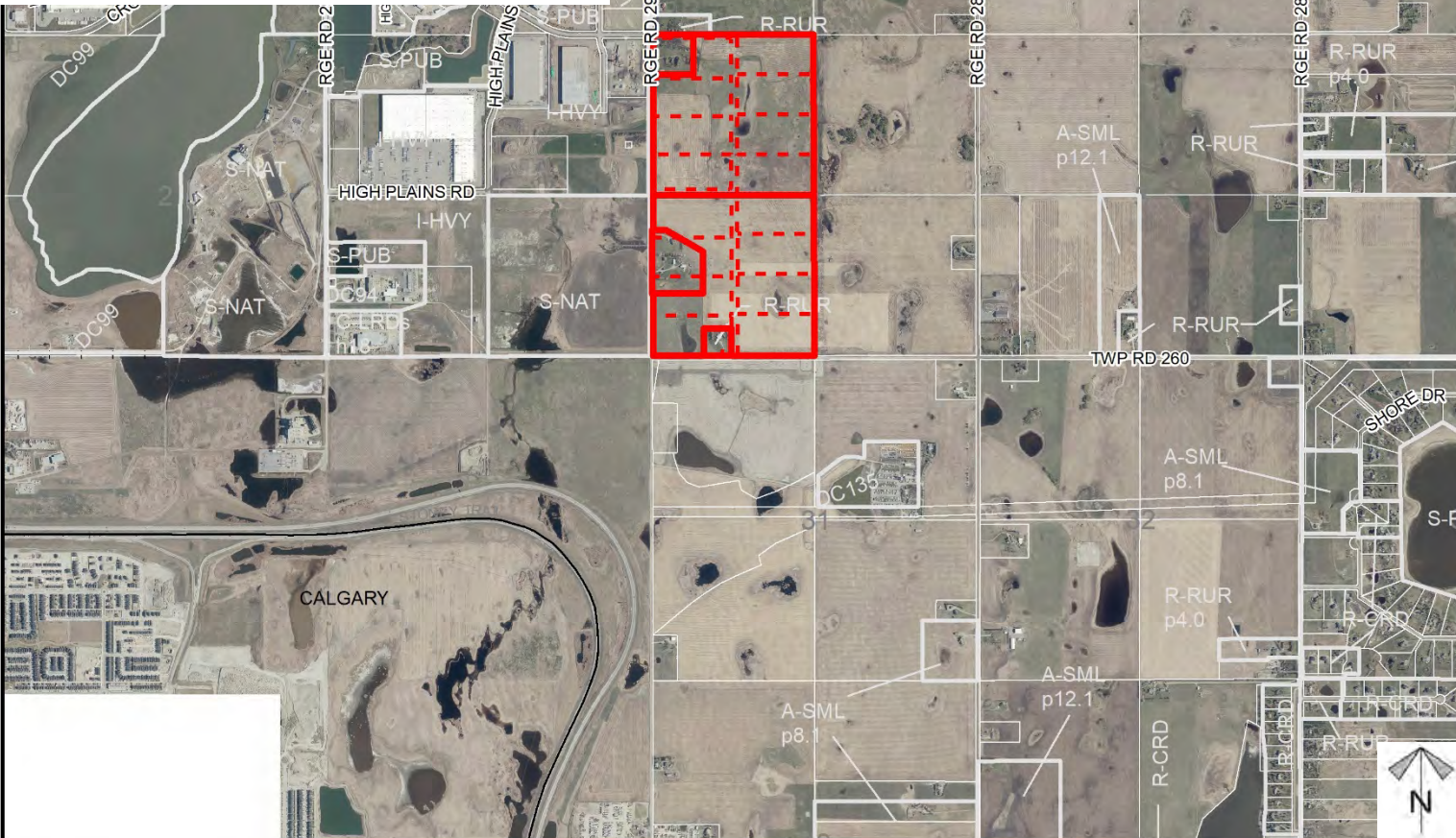
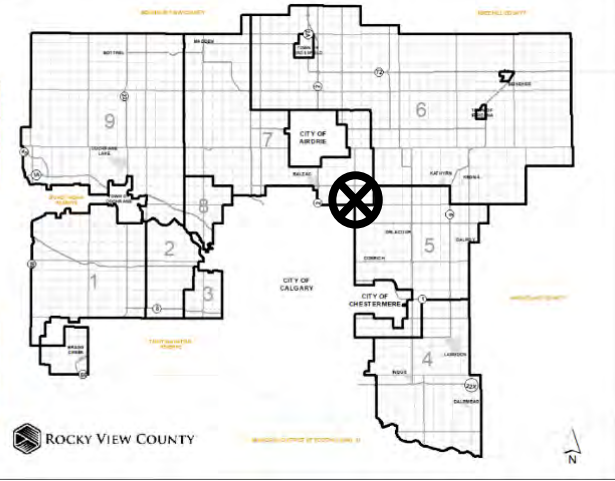


Location & Context

Redesignation Proposal

To redesignate a portion of the subject lands from Agricultural, General District (A-GEN) and Residential, Rural District (R-RUR) to Industrial, Heavy District (I-HVY) in order to facilitate the creation of a 15 new lots with lot sizes between ±6.76 hectares (±16.69 acres) and ±8.14 hectares (±20.12 acres). And, to redesignate a portion of the subject lands from Agricultural, General District Residential and Rural District (R-RUR) to Special, Public Service District (S-PUB) in order to facilitate the creation of 2 new lots between ±0.20 hectares (± 0.50 acres) and ±8.10 hectares (±20.0 acres).

Division: 7  
Roll: 06306002/3/5/7/8  
File: PL20210095  
Printed: May 26, 2021  
Legal: NW/SW-06-26-28-  
W04M

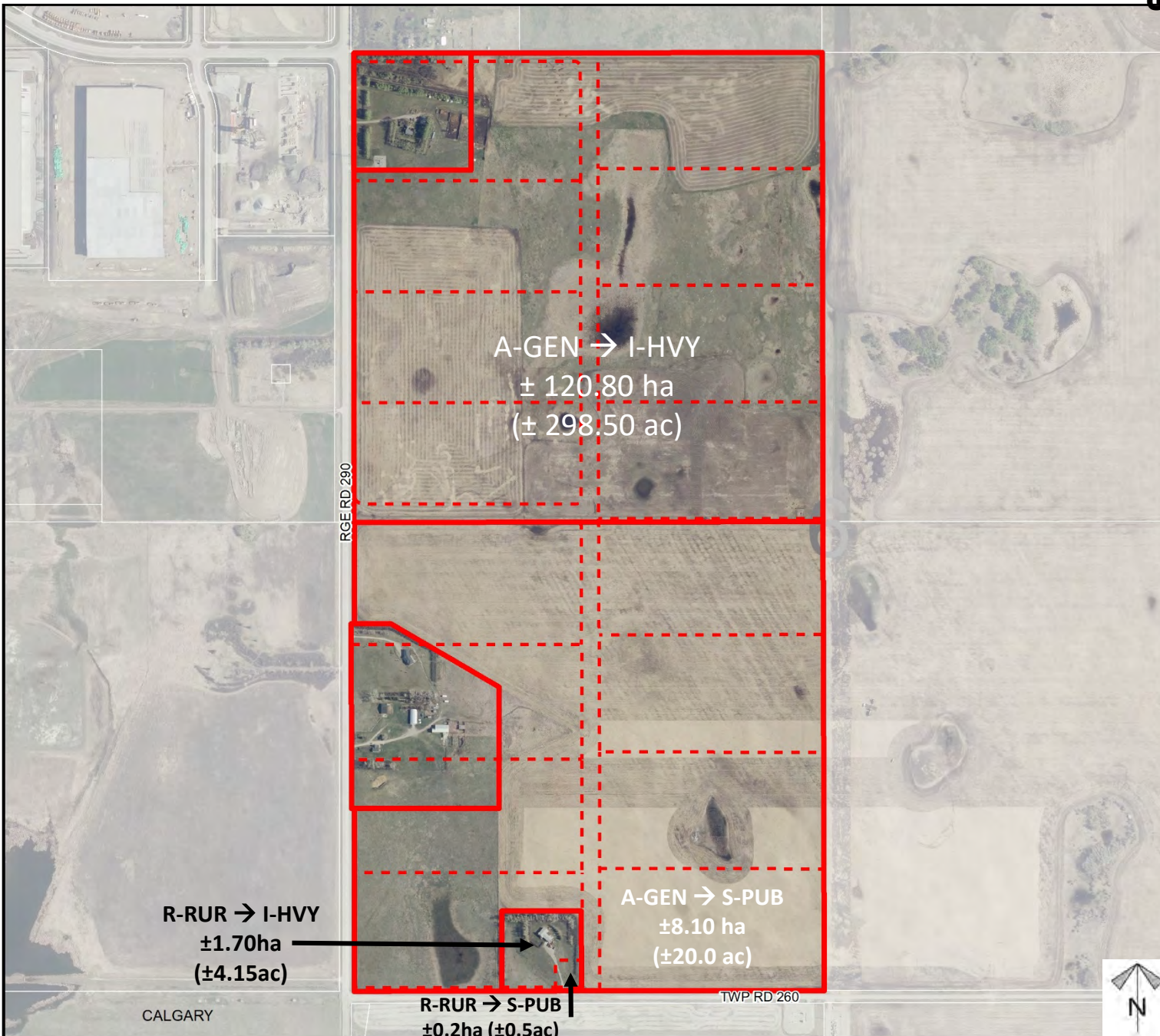


## Development Proposal

### Redesignation Proposal

To redesignate a portion of the subject lands from Agricultural, General District (A-GEN) and Residential, Rural District (R-RUR) to Industrial, Heavy District (I-HVY) in order to facilitate the creation of a 15 new lots with lot sizes between ±6.76 hectares (±16.69 acres) and ±8.14 hectares (±20.12 acres). And, to redesignate a portion of the subject lands from Agricultural, General District Residential and Rural District (R-RUR) to Special, Public Service District (S-PUB) in order to facilitate the creation of 2 new lots between ±0.20 hectares (± 0.50 acres) and ±8.10 hectares (±20.0 acres).

*Division: 7*  
*Roll: 06306002/3/5/7/8*  
*File: PL20210095*  
*Printed: May 26, 2021*  
*Legal: NW/SW-06-26-28-W04M*



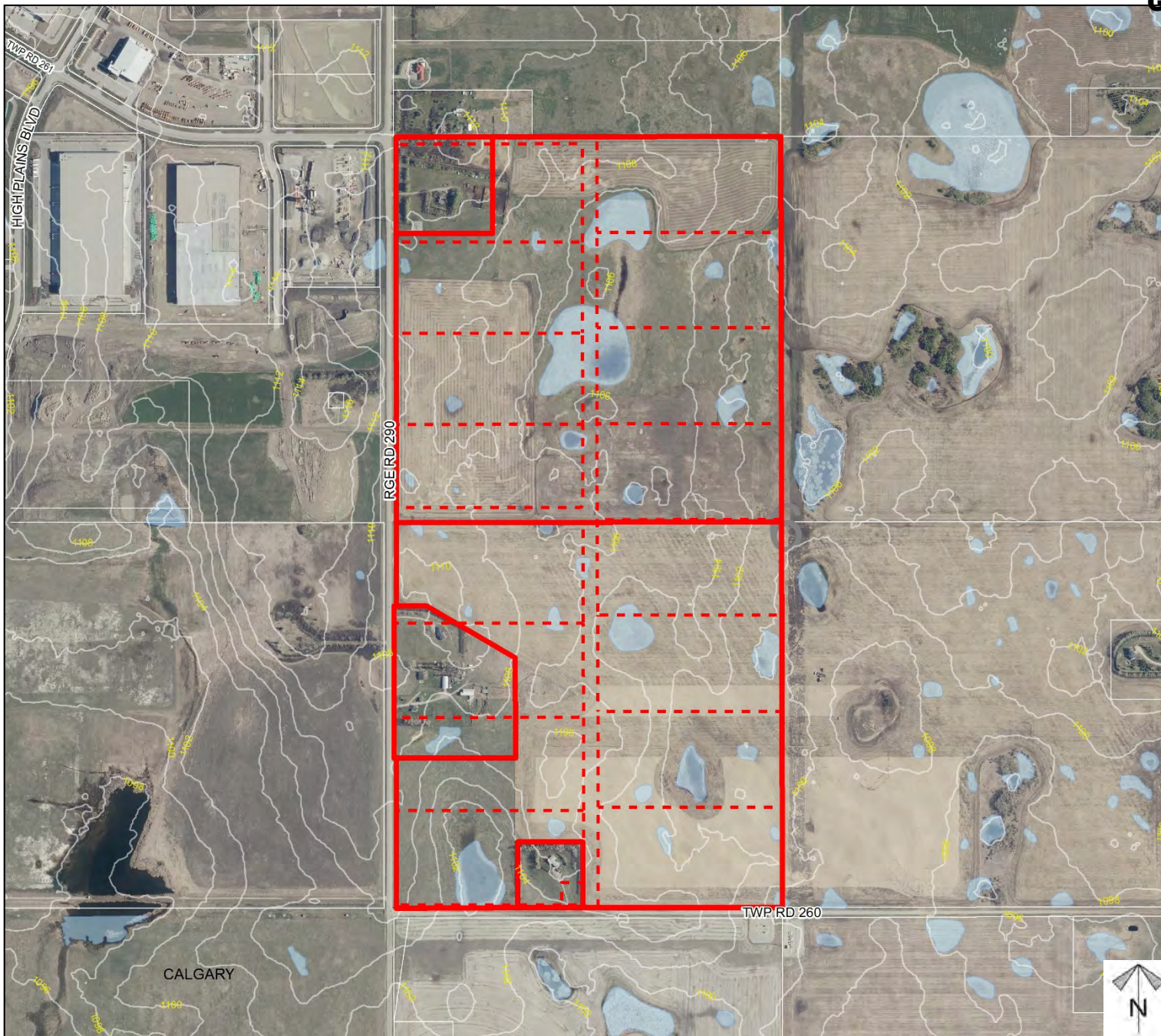
Environmental

**Redesignation Proposal**

To redesignate a portion of the subject lands from Agricultural, General District (A-GEN) and Residential, Rural District (R-RUR) to Industrial, Heavy District (I-HVY) in order to facilitate the creation of 15 new lots with lot sizes between  $\pm 6.76$  hectares ( $\pm 16.69$  acres) and  $\pm 8.14$  hectares ( $\pm 20.12$  acres). And, to redesignate a portion of the subject lands from Agricultural, General District Residential and Rural District (R-RUR) to Special, Public Service District (S-PUB) in order to facilitate the creation of 2 new lots between  $\pm 0.20$  hectares ( $\pm 0.50$  acres) and  $\pm 8.10$  hectares ( $\pm 20.0$  acres).

-  Subject Lands
-  Contour - 2 meters
-  Riparian Setbacks
-  Alberta Wetland Inventory
-  Surface Water

Division: 7  
 Roll: 06306002/3/5/7/8  
 File: PL20210095  
 Printed: May 26, 2021  
 Legal: NW/SW-06-26-28-  
 W04M

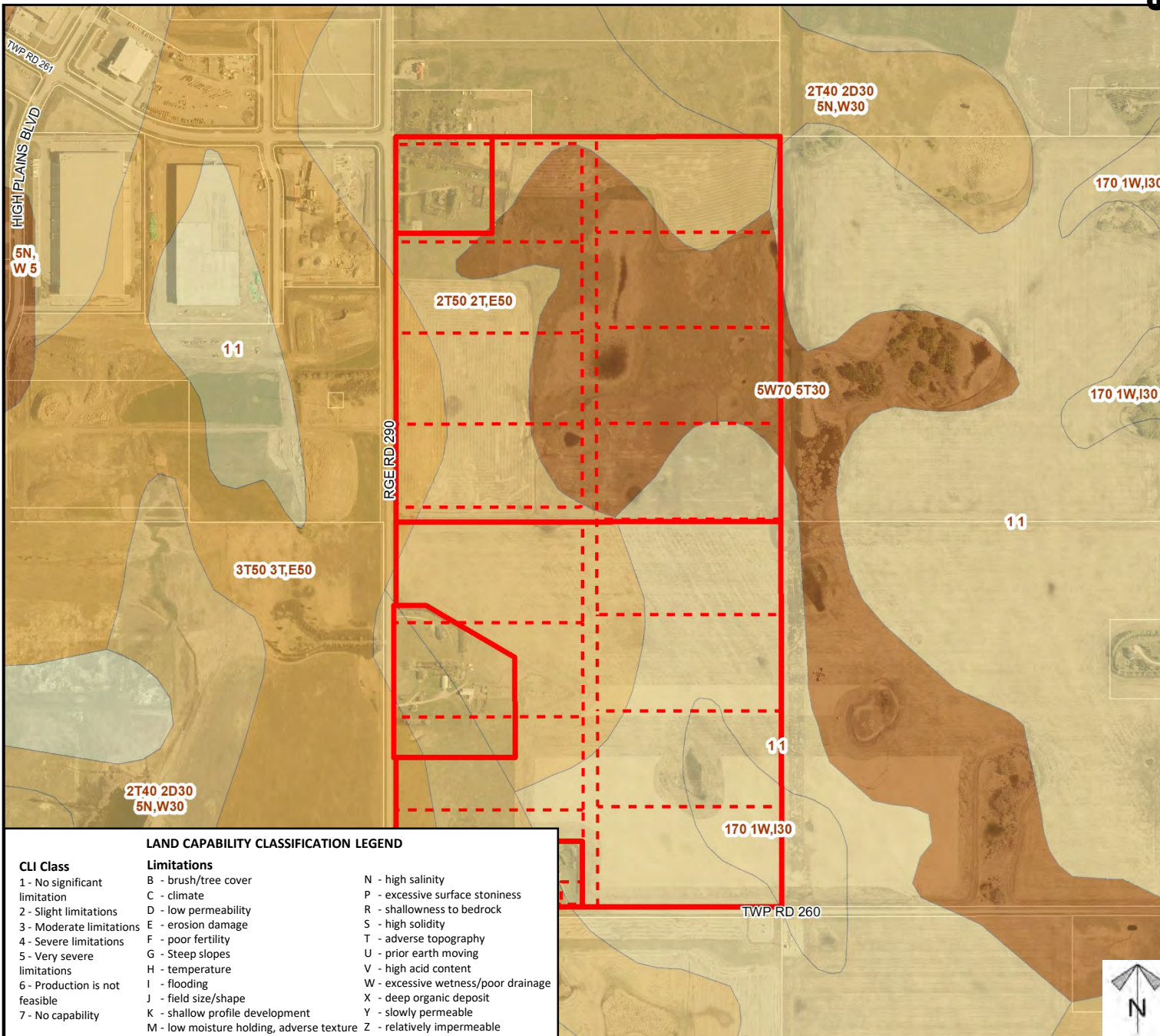


# Soil Classifications

## Redesignation Proposal

To redesignate a portion of the subject lands from Agricultural, General District (A-GEN) and Residential, Rural District (R-RUR) to Industrial, Heavy District (I-HVY) in order to facilitate the creation of a 15 new lots with lot sizes between ±6.76 hectares (±16.69 acres) and ±8.14 hectares (±20.12 acres). And, to redesignate a portion of the subject lands from Agricultural, General District Residential and Rural District (R-RUR) to Special, Public Service District (S-PUB) in order to facilitate the creation of 2 new lots between ±0.20 hectares (± 0.50 acres) and ±8.10 hectares (±20.0 acres).

Division: 7  
Roll: 06306002/3/5/7/8  
File: PL20210095  
Printed: May 26, 2021  
Legal: NW/SW-06-26-28-W04M



### LAND CAPABILITY CLASSIFICATION LEGEND

CLI Class	Limitations	
1 - No significant limitation	B - brush/tree cover	N - high salinity
2 - Slight limitations	C - climate	P - excessive surface stoniness
3 - Moderate limitations	D - low permeability	R - shallowness to bedrock
4 - Severe limitations	E - erosion damage	S - high solidity
5 - Very severe limitations	F - poor fertility	T - adverse topography
6 - Production is not feasible	G - Steep slopes	U - prior earth moving
7 - No capability	H - temperature	V - high acid content
	I - flooding	W - excessive wetness/poor drainage
	J - field size/shape	X - deep organic deposit
	K - shallow profile development	Y - slowly permeable
	M - low moisture holding, adverse texture	Z - relatively impermeable

# Landowner Circulation Area

## Redesignation Proposal

To redesignate a portion of the subject lands from Agricultural, General District (A-GEN) and Residential, Rural District (R-RUR) to Industrial, Heavy District (I-HVY) in order to facilitate the creation of a 15 new lots with lot sizes between ±6.76 hectares (±16.69 acres) and ±8.14 hectares (±20.12 acres).

And, to redesignate a portion of the subject lands from Agricultural, General District Residential and Rural District (R-RUR) to Special, Public Service District (S-PUB) in order to facilitate the creation of 2 new lots between ±0.20 hectares (±0.50 acres) and ±8.10 hectares (±20.0 acres).

### Legend

Support



Not Support



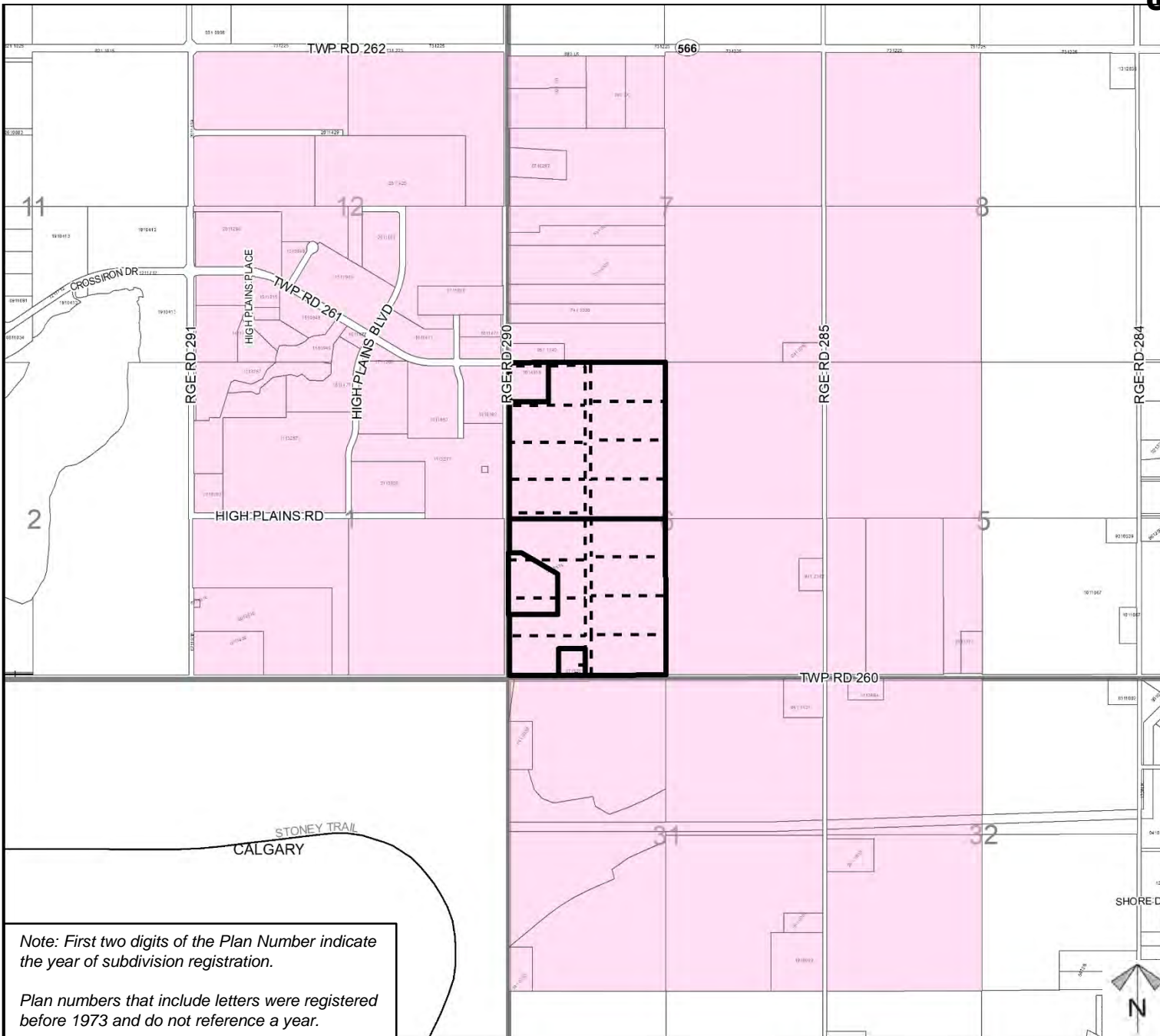
Division: 7

Roll: 06306002/3/5/7/8

File: PL20210095

Printed: May 26, 2021

Legal: NW/SW-06-26-28-W04M



Note: First two digits of the Plan Number indicate the year of subdivision registration.

Plan numbers that include letters were registered before 1973 and do not reference a year.