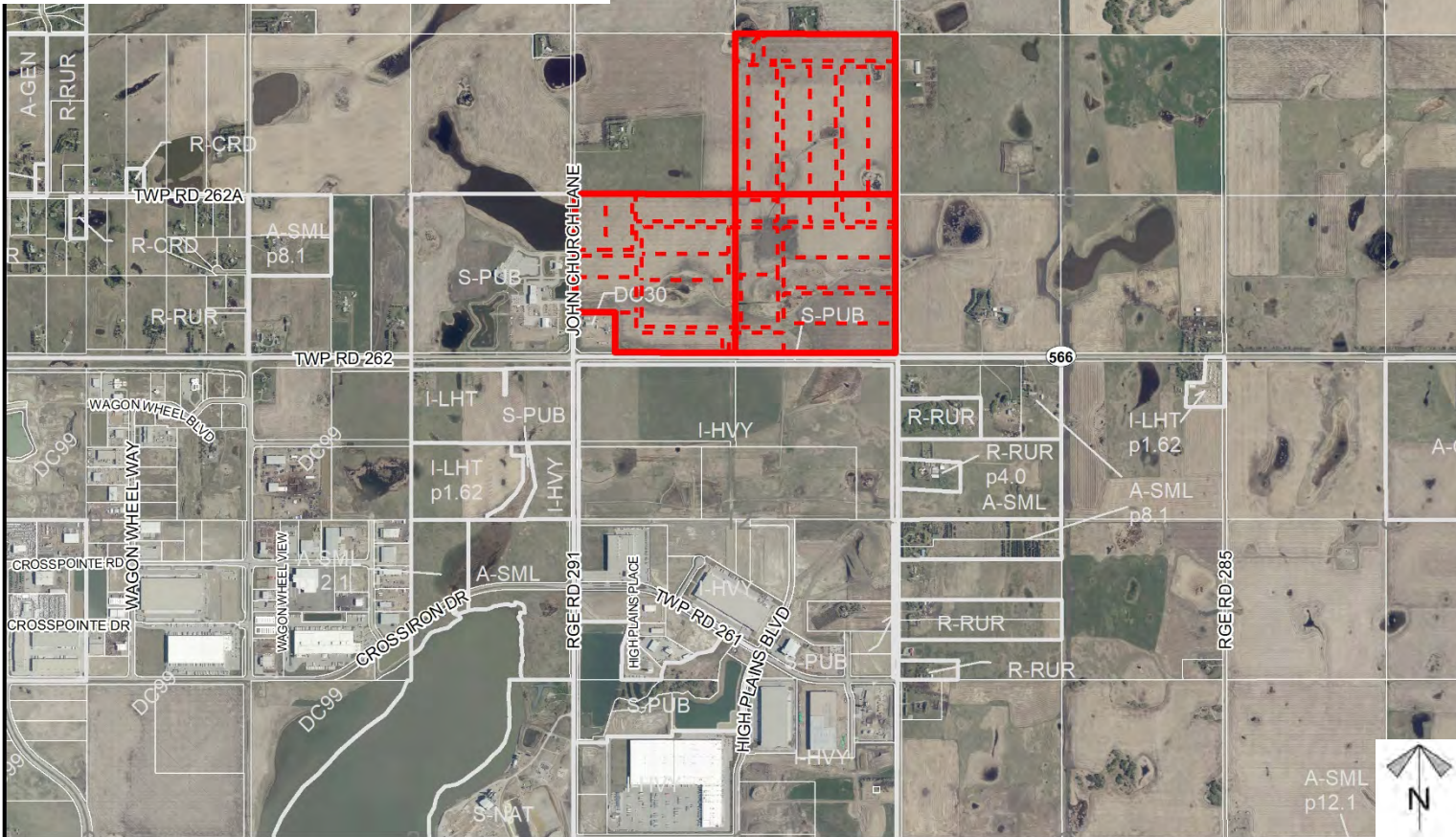
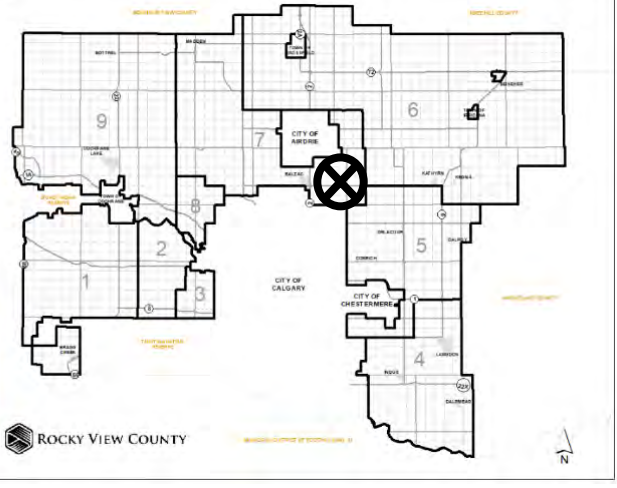


Location
& Context



Division: 2
 Roll: 06413001/002/004
 File: PL20210093
 Printed: May 26, 2021
 Legal: NE/SE/SW-13-26-29-
 W04M

Development Proposal

Conceptual Scheme Proposal:
To adopt the Alta Vista Landing Conceptual Scheme to provide a policy framework to guide future redesignation, subdivision and development proposals within NE/SE/SW-13-26-29-W04M.

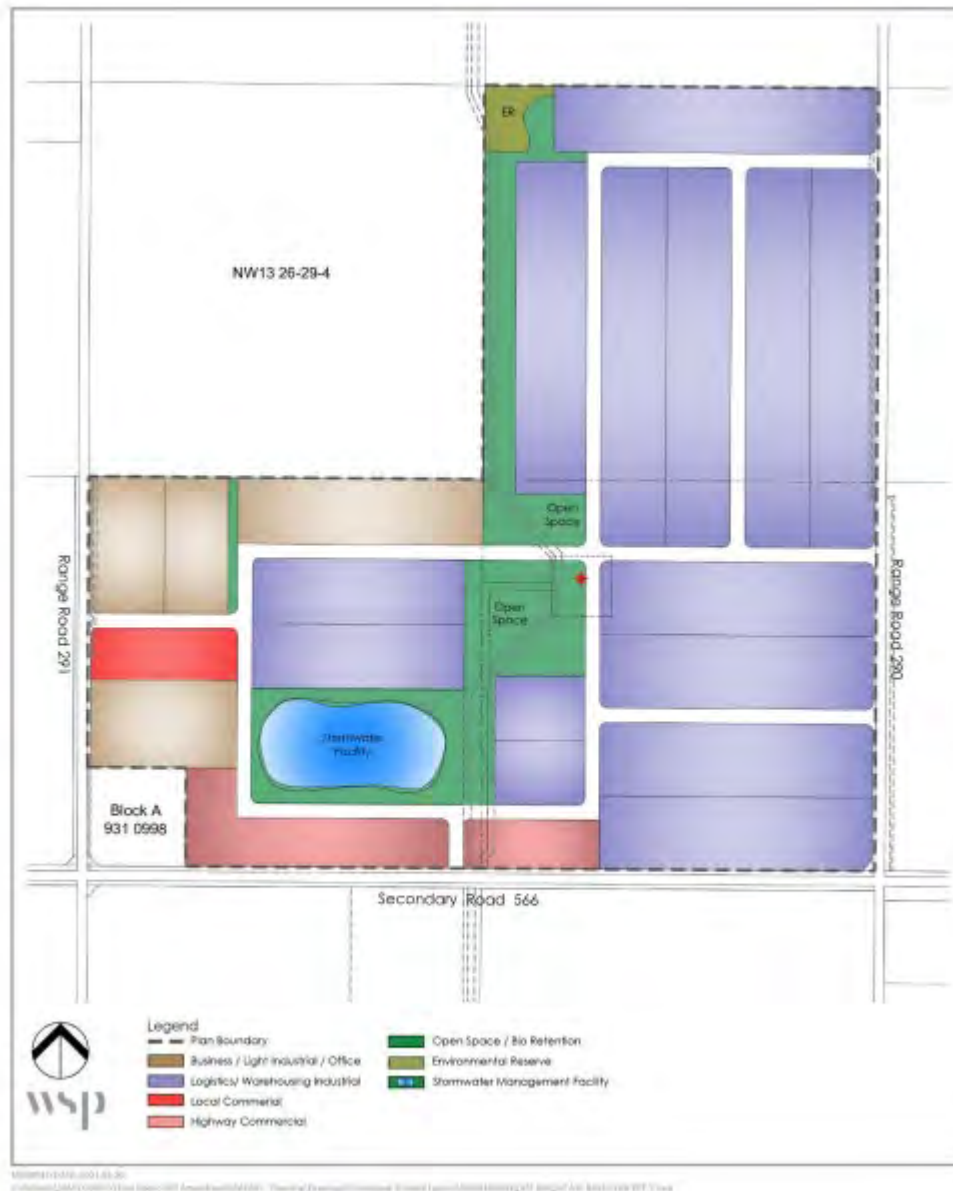
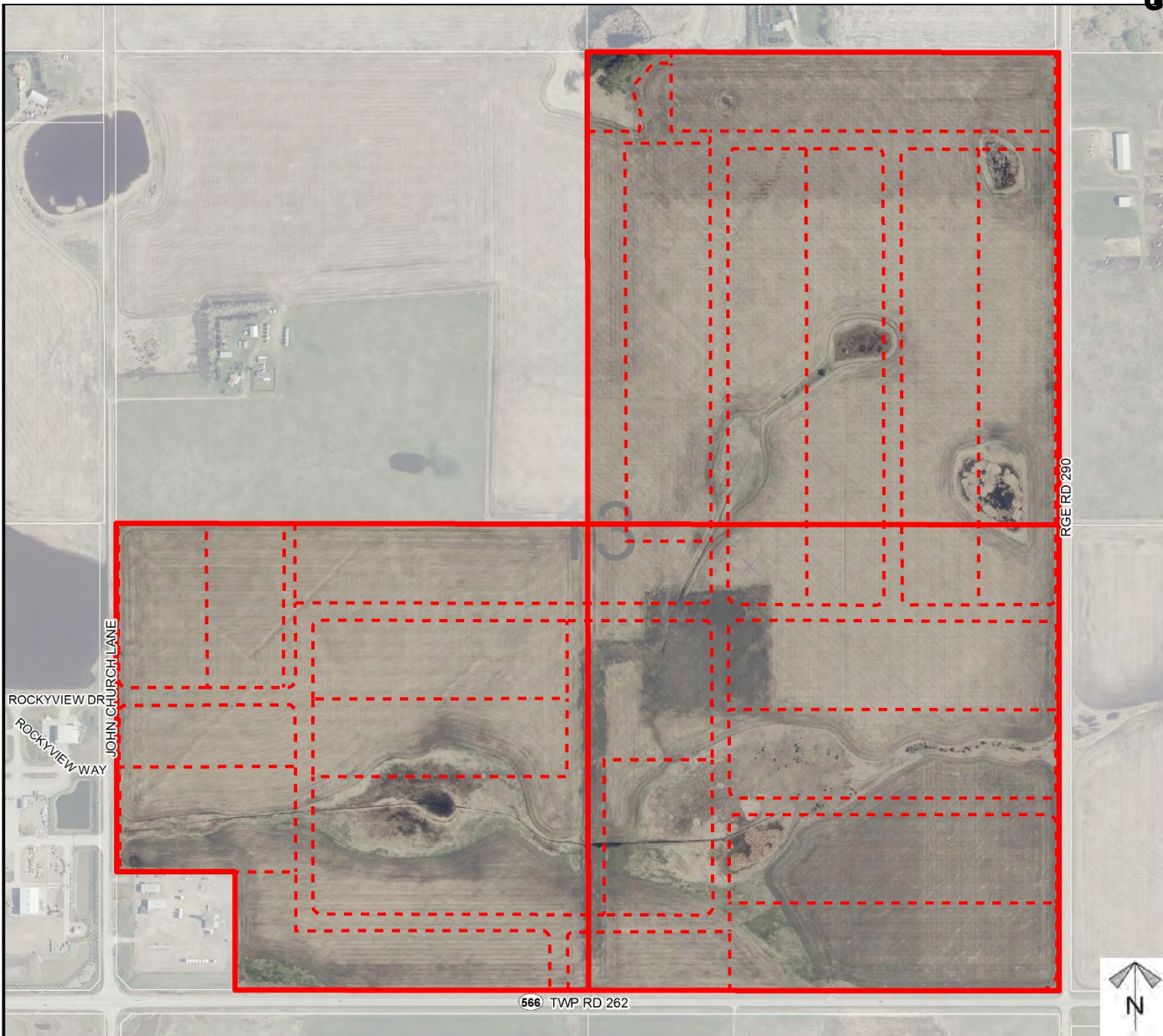


Figure 8: Development Concept Plan



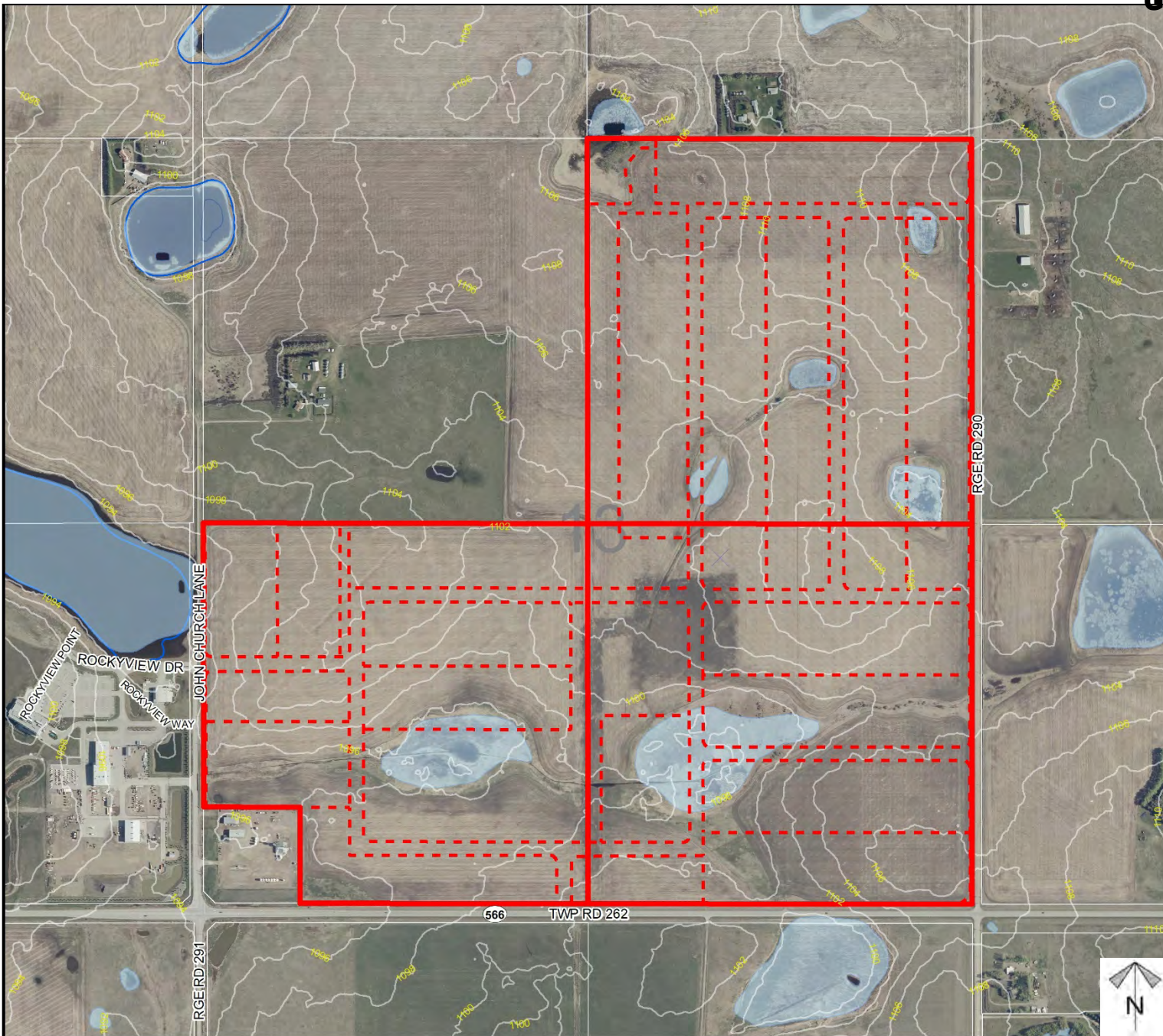
Division: 2
Roll: 06413001/002/004
File: PL20210093
Printed: May 26, 2021
Legal: NE/SE/SW-13-26-29-W04M

Development
Proposal



Division: 2
Roll: 06413001/002/004
File: PL20210093
Printed: May 26, 2021
Legal: NE/SE/SW-13-26-29-
W04M

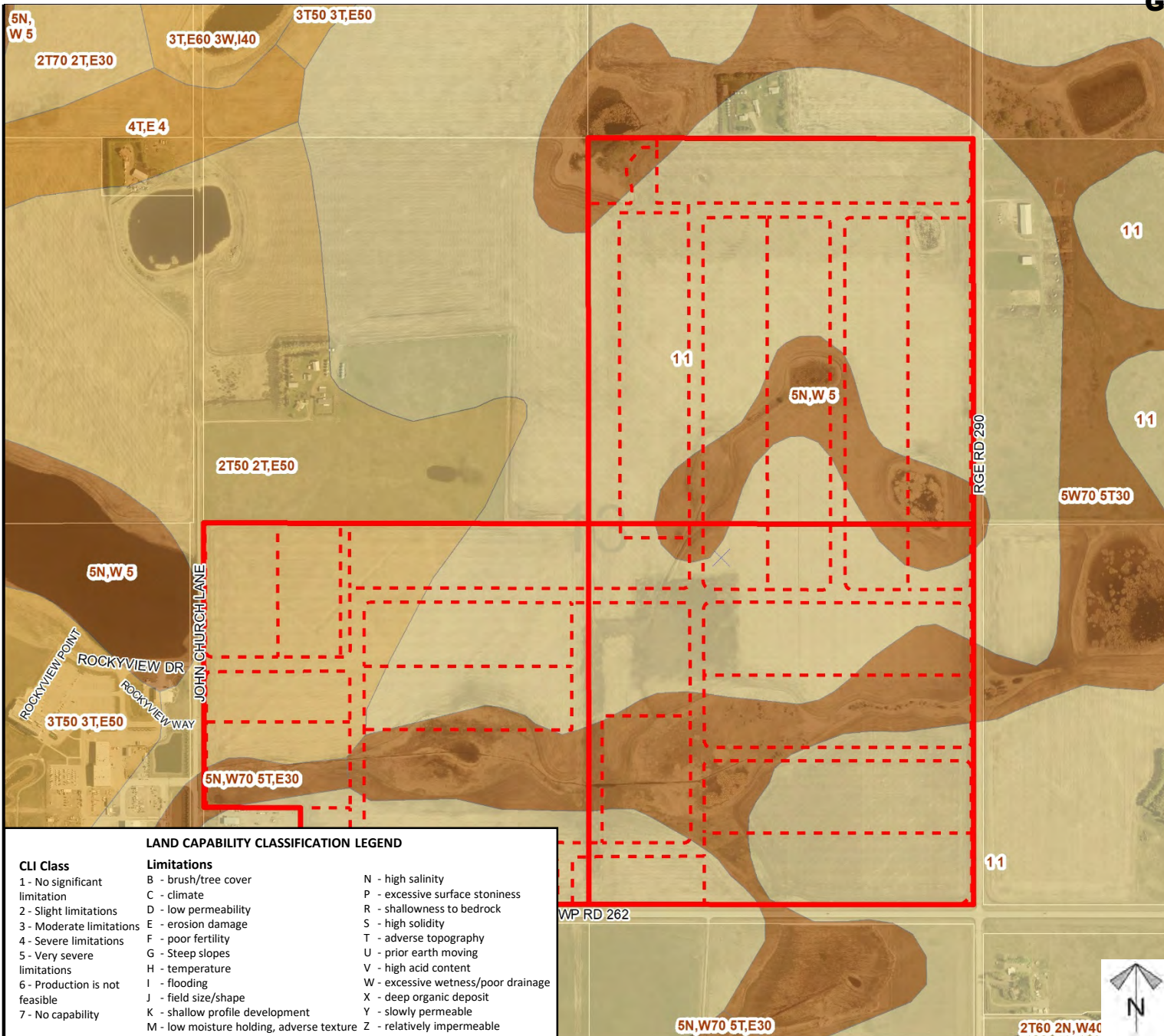
Environmental



-  Subject Lands
-  Contour - 2 meters
-  Riparian Setbacks
-  Alberta Wetland Inventory
-  Surface Water

Division: 2
Roll: 06413001/002/004
File: PL20210093
Printed: May 26, 2021
Legal: NE/SE/SW-13-26-29-
W04M

Soil
 Classifications



LAND CAPABILITY CLASSIFICATION LEGEND		
CLI Class	Limitations	
1 - No significant limitation	B - brush/tree cover	N - high salinity
2 - Slight limitations	C - climate	P - excessive surface stoniness
3 - Moderate limitations	D - low permeability	R - shallowness to bedrock
4 - Severe limitations	E - erosion damage	S - high solidity
5 - Very severe limitations	F - poor fertility	T - adverse topography
6 - Production is not feasible	G - Steep slopes	U - prior earth moving
7 - No capability	H - temperature	V - high acid content
	I - flooding	W - excessive wetness/poor drainage
	J - field size/shape	X - deep organic deposit
	K - shallow profile development	Y - slowly permeable
	M - low moisture holding, adverse texture	Z - relatively impermeable

Division: 2
 Roll: 06413001/002/004
 File: PL20210093
 Printed: May 26, 2021
 Legal: NE/SE/SW-13-26-29-W04M



Landowner Circulation Area



Legend

Support



Not Support



Note: First two digits of the Plan Number indicate the year of subdivision registration.

Plan numbers that include letters were registered before 1973 and do not reference a year.

Division: 2
Roll: 06413001/002/004
File: PL20210093
Printed: May 26, 2021
Legal: NE/SE/SW-13-26-29-
W04M