

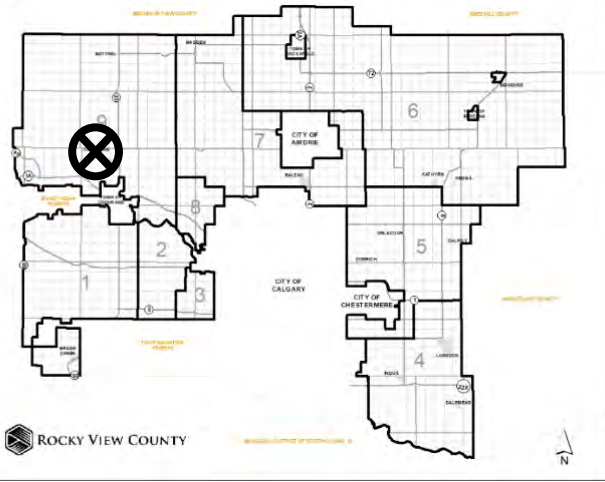
# Location & Context

## Redesignation Proposal

To redesignate a portion of the subject lands from Agriculture, General District (A-GEN) to Agriculture, Small Parcel District (A-SML) and another from Agriculture, General District (A-GEN) to Agriculture, Small Parcel District (A-SML) p8.1 in order to facilitate the creation of a ± 54.78 acre parcel with ± 23.99 acre remainder.

Division: 9  
Roll: 06832002  
File: PL20210073  
Printed: May 10, 2021  
Legal: Lot:7 Block:1  
Plan:0310265 within NW-32-26-04-W05M

### ATTACHMENT 'B': MAP SET





## Development Proposal

### Redesignation Proposal

To redesignate a portion of the subject lands from Agriculture, General District (A-GEN) to Agriculture, Small Parcel District (A-SML) and another from Agriculture, General District (A-GEN) to Agriculture, Small Parcel District (A-SML) p8.1 in order to facilitate the creation of a  $\pm 54.78$  acre parcel with  $\pm 23.99$  acre remainder.

A-GEN  $\rightarrow$  A-SMLp8.1

Lot 1

$\pm 9.71$  hectares

( $\pm 23.99$  acres)

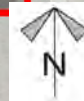
A-GEN  $\rightarrow$  A-SML

Lot 2

$\pm 22.17$  hectares

( $\pm 54.78$  acres)

HORSE CREEK RD



Division: 9  
Roll: 06832002  
File: PL20210073  
Printed: May 10, 2021  
Legal: Lot:7 Block:1  
Plan:0310265 within NW-32-  
26-04-W05M



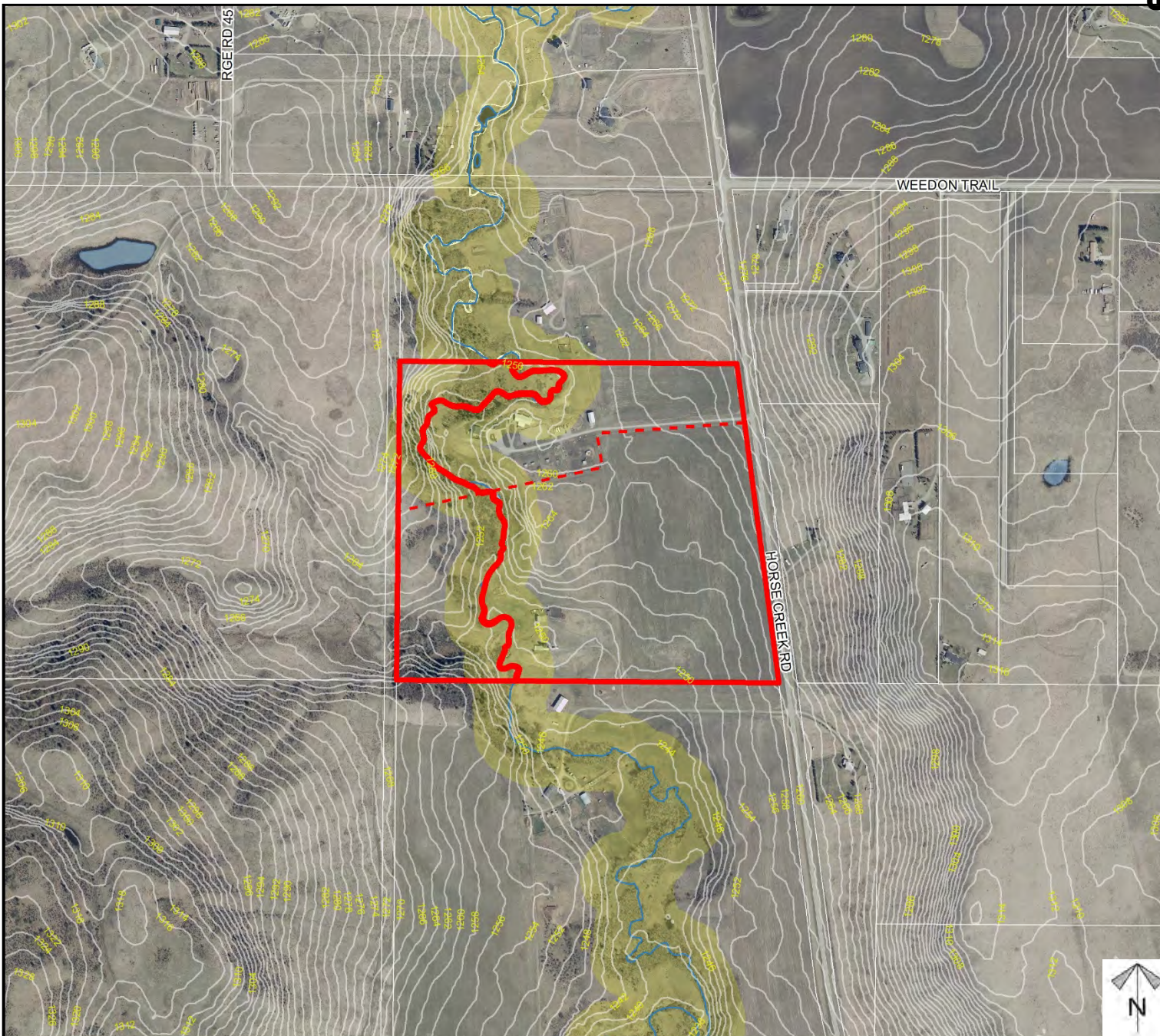
Environmental

**Redesignation Proposal**

To redesignate a portion of the subject lands from Agriculture, General District (A-GEN) to Agriculture, Small Parcel District (A-SML) and another from Agriculture, General District (A-GEN) to Agriculture, Small Parcel District (A-SML) p8.1 in order to facilitate the creation of a ± 54.78 acre parcel with ± 23.99 acre remainder.

-  Subject Lands
-  Contour - 2 meters
-  Riparian Setbacks
-  Alberta Wetland Inventory
-  Surface Water

Division: 9  
Roll: 06832002  
File: PL20210073  
Printed: May 10, 2021  
Legal: Lot:7 Block:1  
Plan:0310265 within NW-32-26-04-W05M

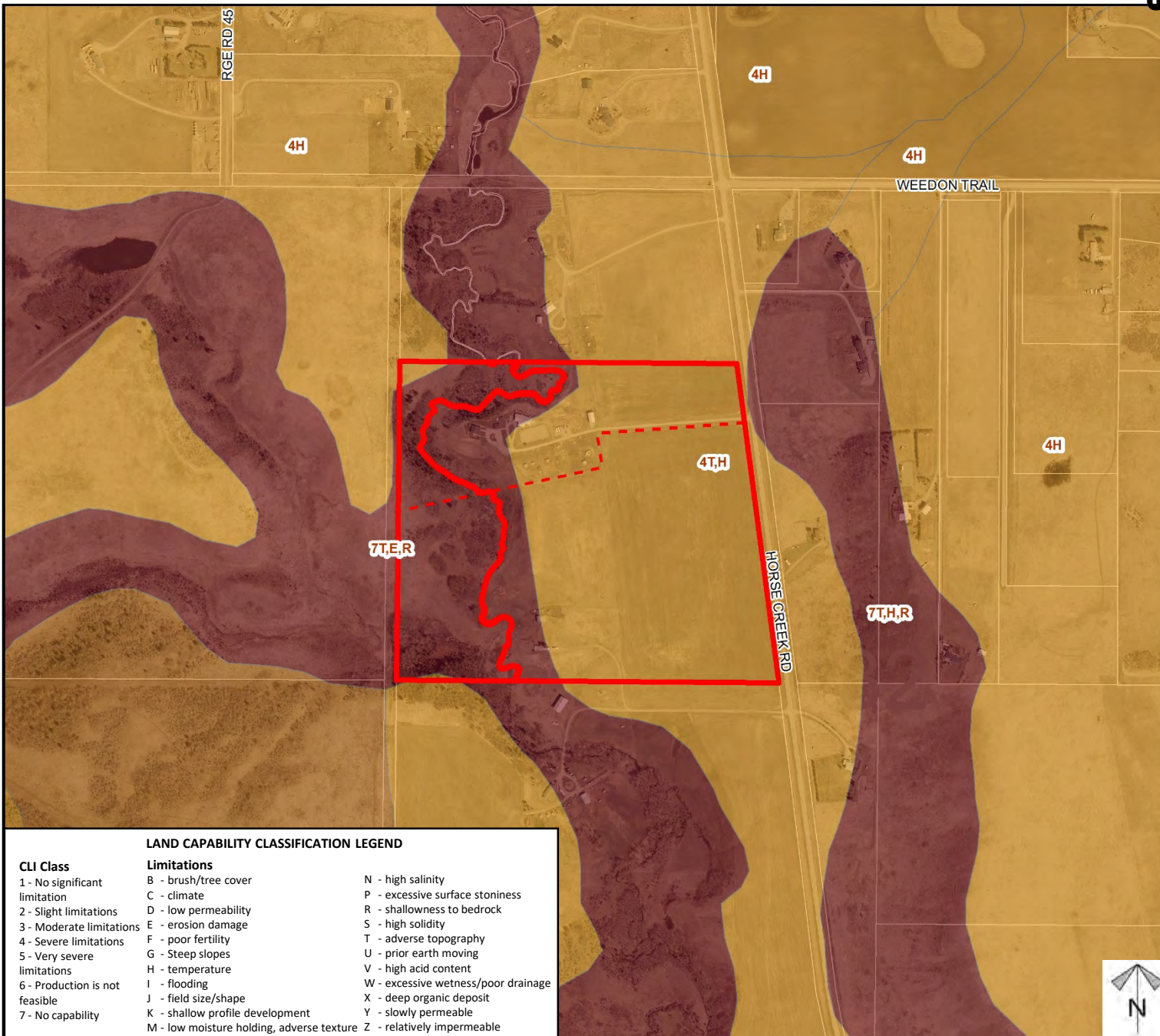




# Soil Classifications

## Redesignation Proposal

To redesignate a portion of the subject lands from Agriculture, General District (A-GEN) to Agriculture, Small Parcel District (A-SML) and another from Agriculture, General District (A-GEN) to Agriculture, Small Parcel District (A-SML) p8.1 in order to facilitate the creation of a ± 54.78 acre parcel with ± 23.99 acre remainder.



**LAND CAPABILITY CLASSIFICATION LEGEND**

CLI Class	Limitations	
1 - No significant limitation	B - brush/tree cover	N - high salinity
2 - Slight limitations	C - climate	P - excessive surface stoniness
3 - Moderate limitations	D - low permeability	R - shallowness to bedrock
4 - Severe limitations	E - erosion damage	S - high solidity
5 - Very severe limitations	F - poor fertility	T - adverse topography
6 - Production is not feasible	G - Steep slopes	U - prior earth moving
7 - No capability	H - temperature	V - high acid content
	I - flooding	W - excessive wetness/poor drainage
	J - field size/shape	X - deep organic deposit
	K - shallow profile development	Y - slowly permeable
	M - low moisture holding, adverse texture	Z - relatively impermeable





Division: 9  
 Roll: 06832002  
 File: PL20210073  
 Printed: May 10, 2021  
 Legal: Lot:7 Block:1  
 Plan:0310265 within NW-32-26-04-W05M

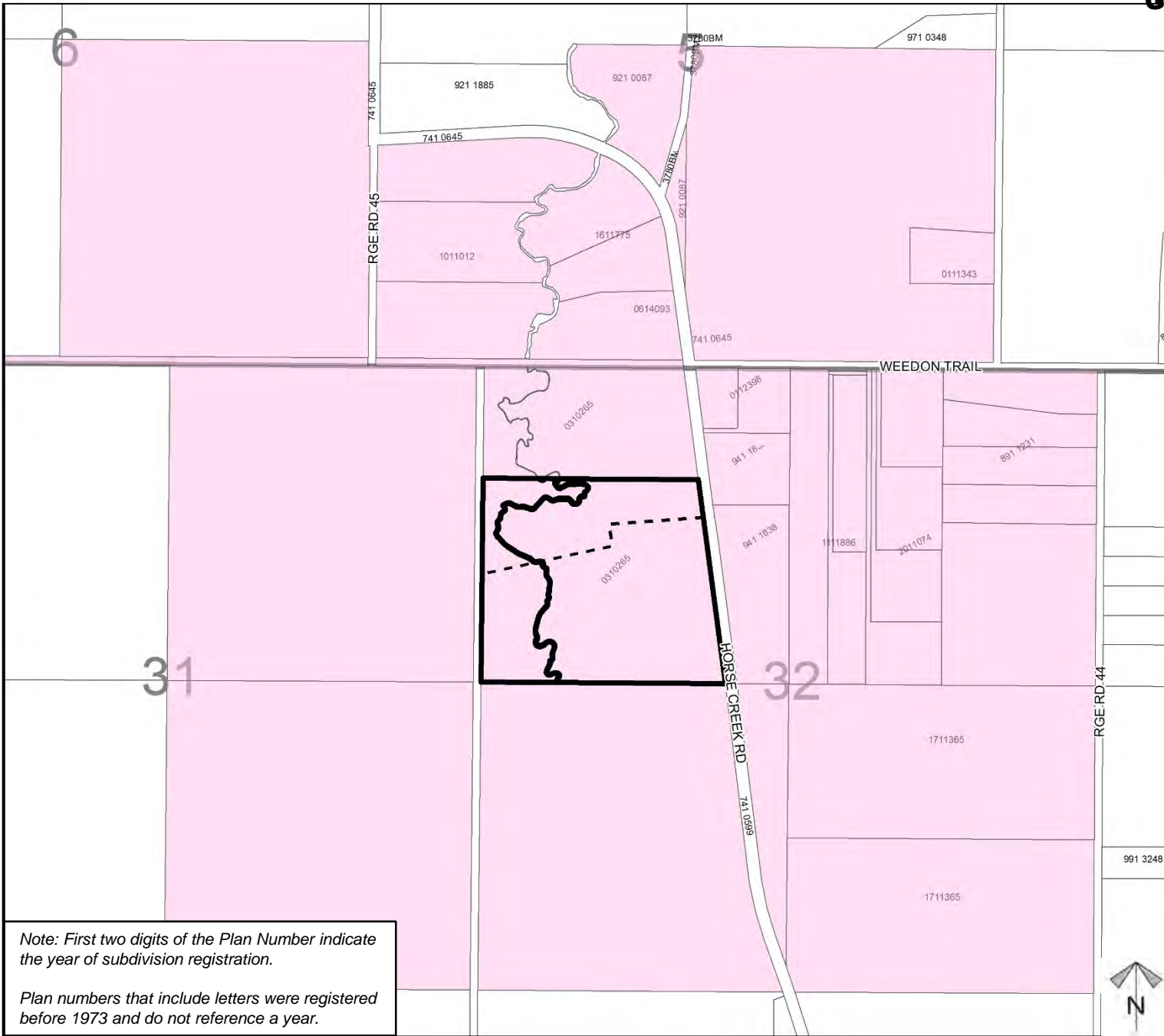
# Landowner Circulation Area

## Redesignation Proposal

To redesignate a portion of the subject lands from Agriculture, General District (A-GEN) to Agriculture, Small Parcel District (A-SML) and another from Agriculture, General District (A-GEN) to Agriculture, Small Parcel District (A-SML) p8.1 in order to facilitate the creation of a ± 54.78 acre parcel with ± 23.99 acre remainder.

Support   
Opposition  Legend

Division: 9  
Roll: 06832002  
File: PL20210073  
Printed: May 10, 2021  
Legal: Lot:7 Block:1  
Plan:0310265 within NW-32-  
26-04-W05M



Note: First two digits of the Plan Number indicate the year of subdivision registration.  
  
Plan numbers that include letters were registered before 1973 and do not reference a year.

