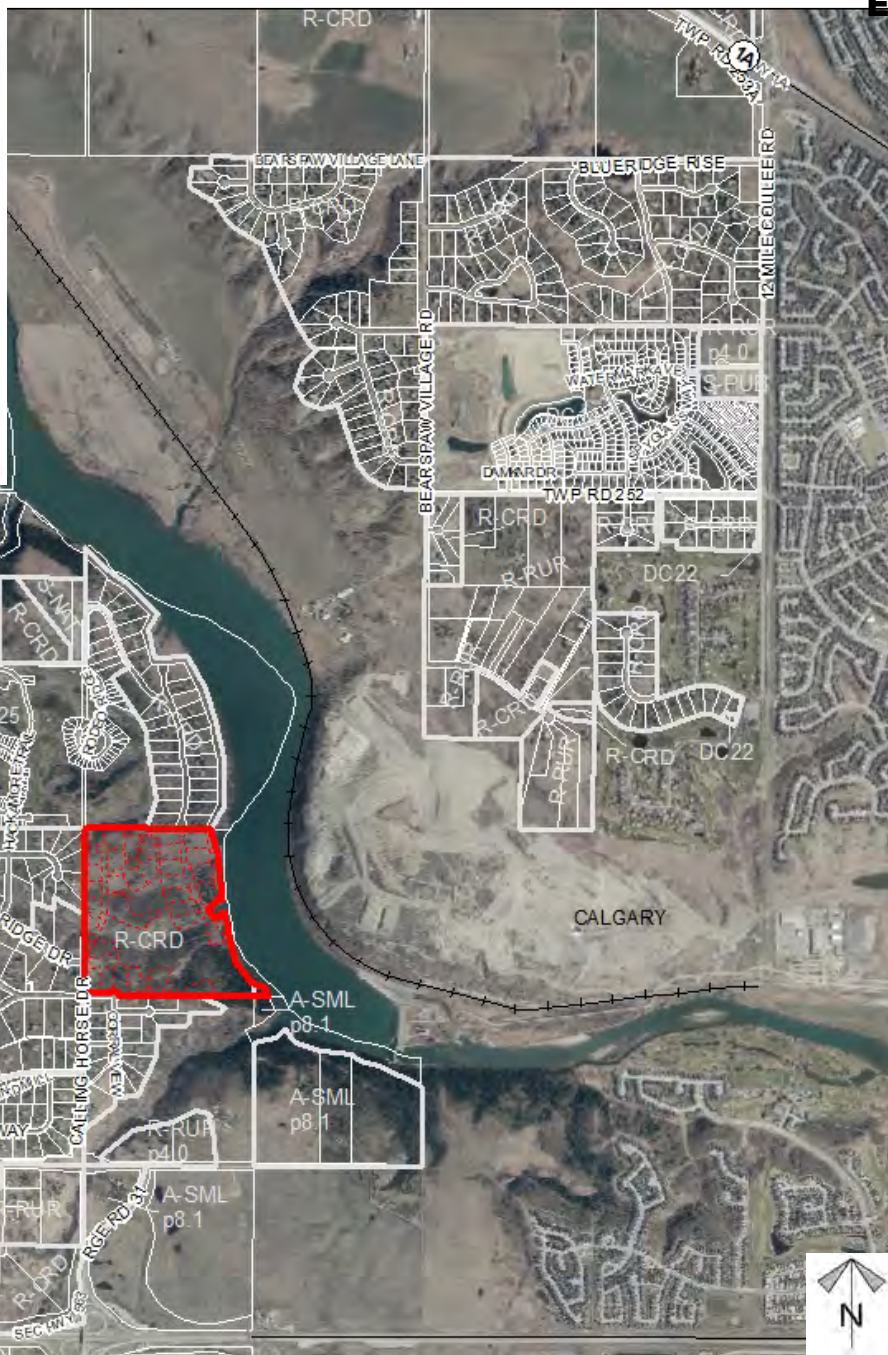
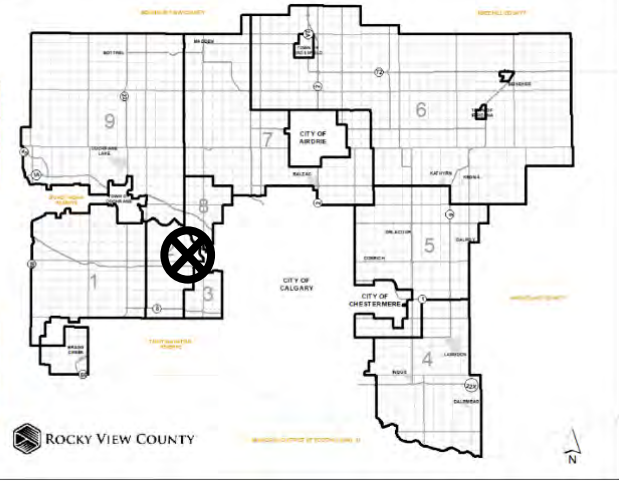


Location
& Context

Conceptual Scheme

To adopt the Riverside Estates Conceptual Scheme to provide a policy framework to guide future subdivision and development proposals within N1/2-1-25-30-W5M



Division: 2
Roll: 05701004
File: PLPL20170010
Printed: April 26, 2021
Legal: N 1/2-01-25-03-W05M

Development Proposal

Conceptual Scheme

To adopt the Riverside Estates Conceptual Scheme to provide a policy framework to guide future subdivision and development proposals within N1/2-1-25-30-W5M

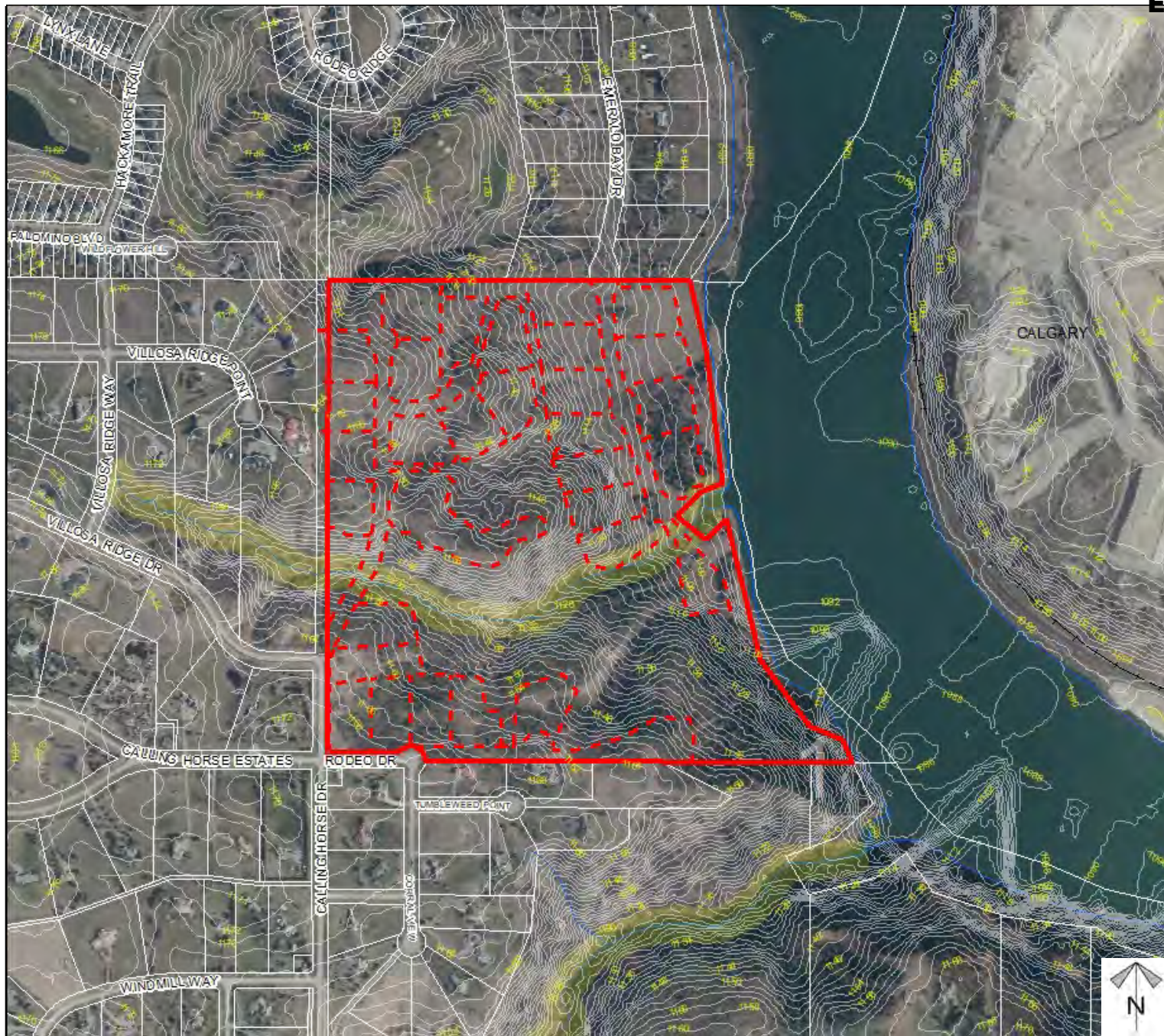


*Division: 2
Roll: 05701004
File: PLPL20170010
Printed: April 26, 2021
Legal: N 1/2-01-25-03-W05M*

Environmental

Conceptual Scheme

To adopt the Riverside Estates Conceptual Scheme to provide a policy framework to guide future subdivision and development proposals within N1/2-1-25-30-W5M



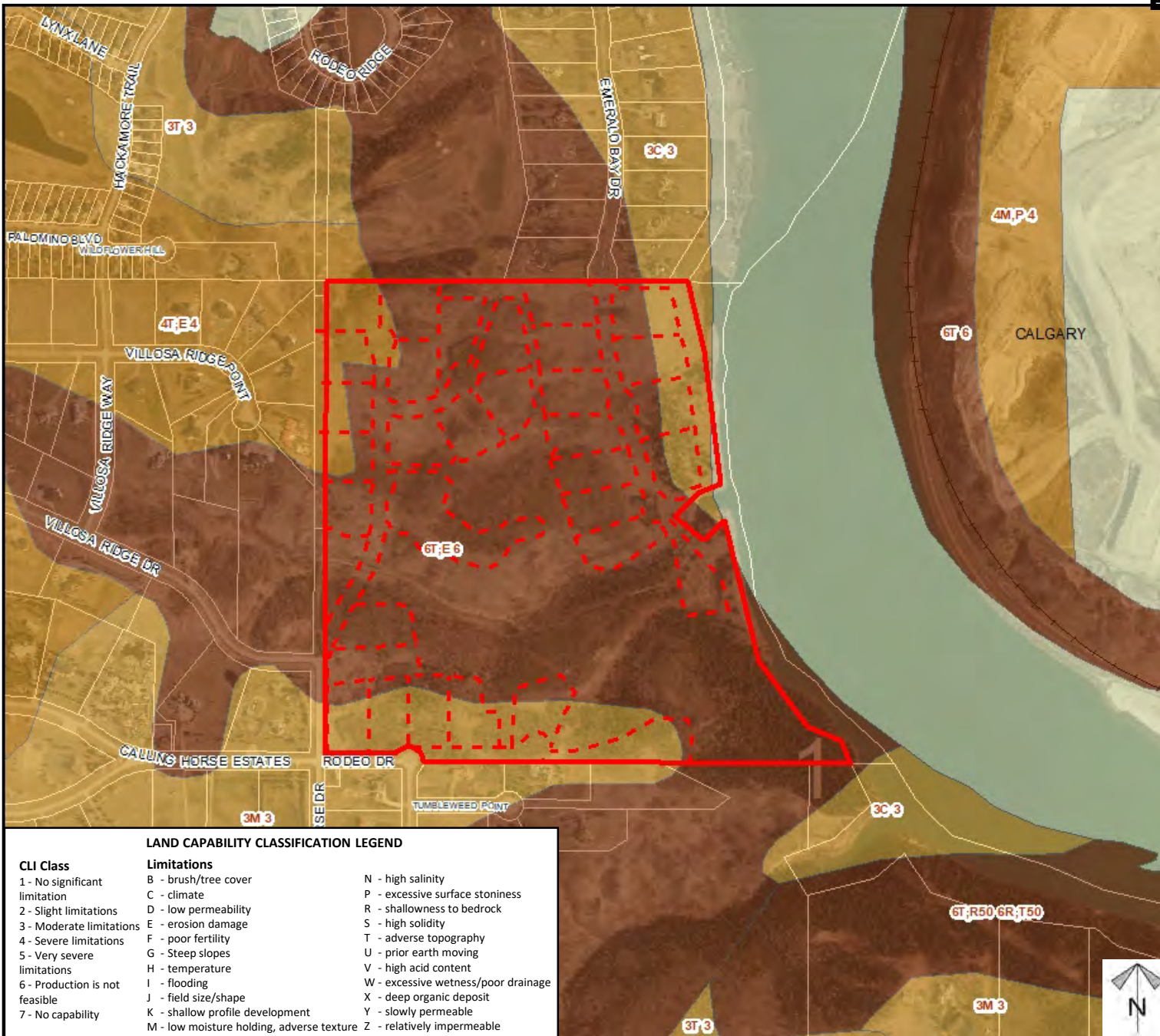
-  Subject Lands
-  Contour - 2 meters
-  Riparian Setbacks
-  Alberta Wetland Inventory
-  Surface Water

Division: 2
Roll: 05701004
File: PLPL20170010
Printed: April 26, 2021
Legal: N 1/2-01-25-03-W05M

Soil Classifications

Conceptual Scheme

To adopt the Riverside Estates Conceptual Scheme to provide a policy framework to guide future subdivision and development proposals within N1/2-1-25-30-W5M



LAND CAPABILITY CLASSIFICATION LEGEND

CLI Class	Limitations
1 - No significant limitation	B - brush/tree cover
2 - Slight limitations	C - climate
3 - Moderate limitations	D - low permeability
4 - Severe limitations	E - erosion damage
5 - Very severe limitations	F - poor fertility
6 - Production is not feasible	G - Steep slopes
7 - No capability	H - temperature
	I - flooding
	J - field size/shape
	K - shallow profile development
	M - low moisture holding, adverse texture
	N - high salinity
	P - excessive surface stoniness
	R - shallowness to bedrock
	S - high solidity
	T - adverse topography
	U - prior earth moving
	V - high acid content
	W - excessive wetness/poor drainage
	X - deep organic deposit
	Y - slowly permeable
	Z - relatively impermeable



Division: 2
Roll: 05701004
File: PLPL20170010
Printed: April 26, 2021
Legal: N 1/2-01-25-03-W05M

**Landowner
 Circulation
 Area**

Conceptual Scheme

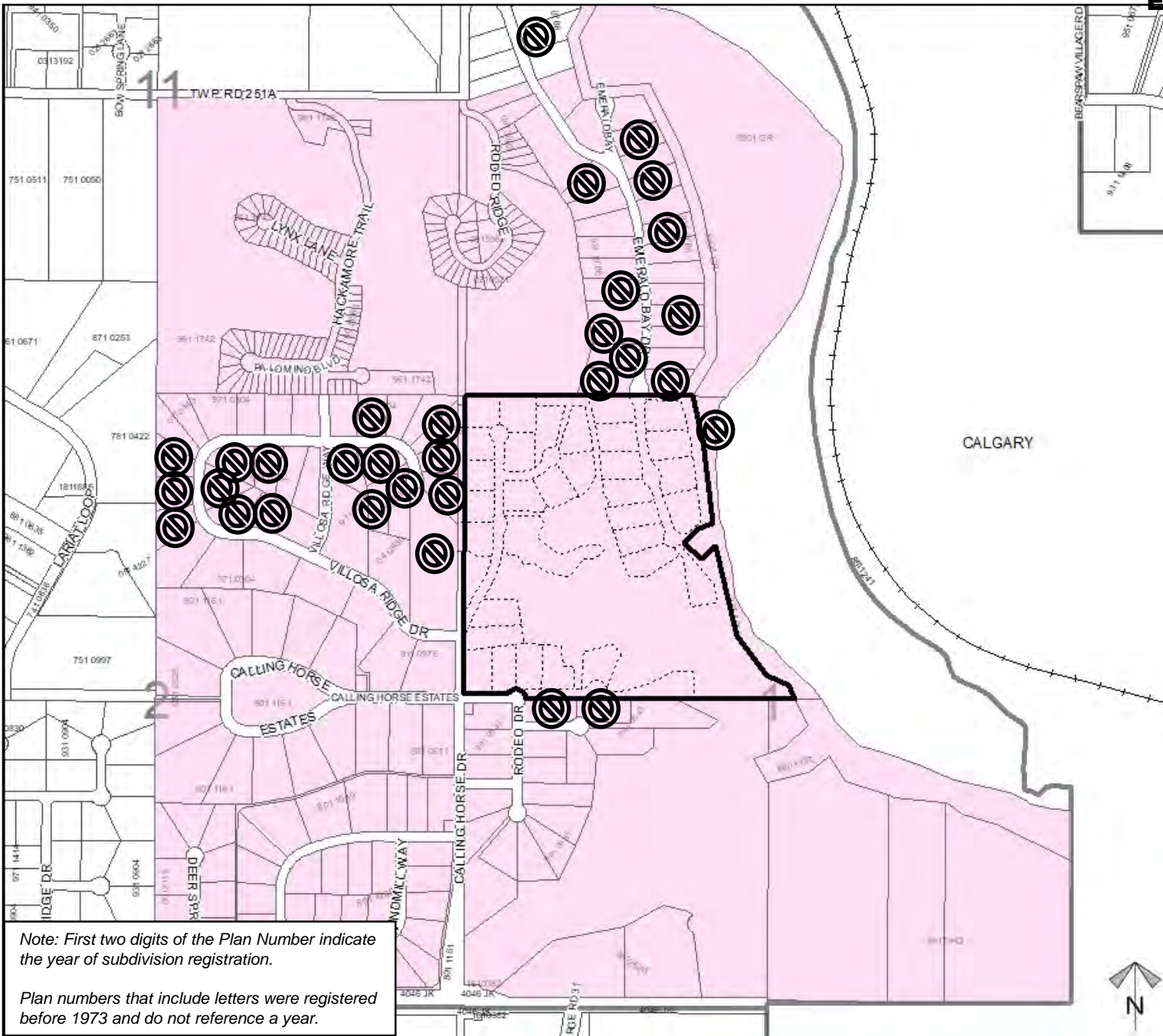
To adopt the Riverside Estates Conceptual Scheme to provide a policy framework to guide future subdivision and development proposals within N1/2-1-25-30-W5M

Legend

- Support 
- Opposition 

Letters:
 31 in Opposition
 One Outside the Circulation Area
 One name could not be identified

Division: 2
 Roll: 05701004
 File: PLPL20170010
 Printed: April 26, 2021
 Legal: N 1/2-01-25-03-W05M



Note: First two digits of the Plan Number indicate the year of subdivision registration.

Plan numbers that include letters were registered before 1973 and do not reference a year.