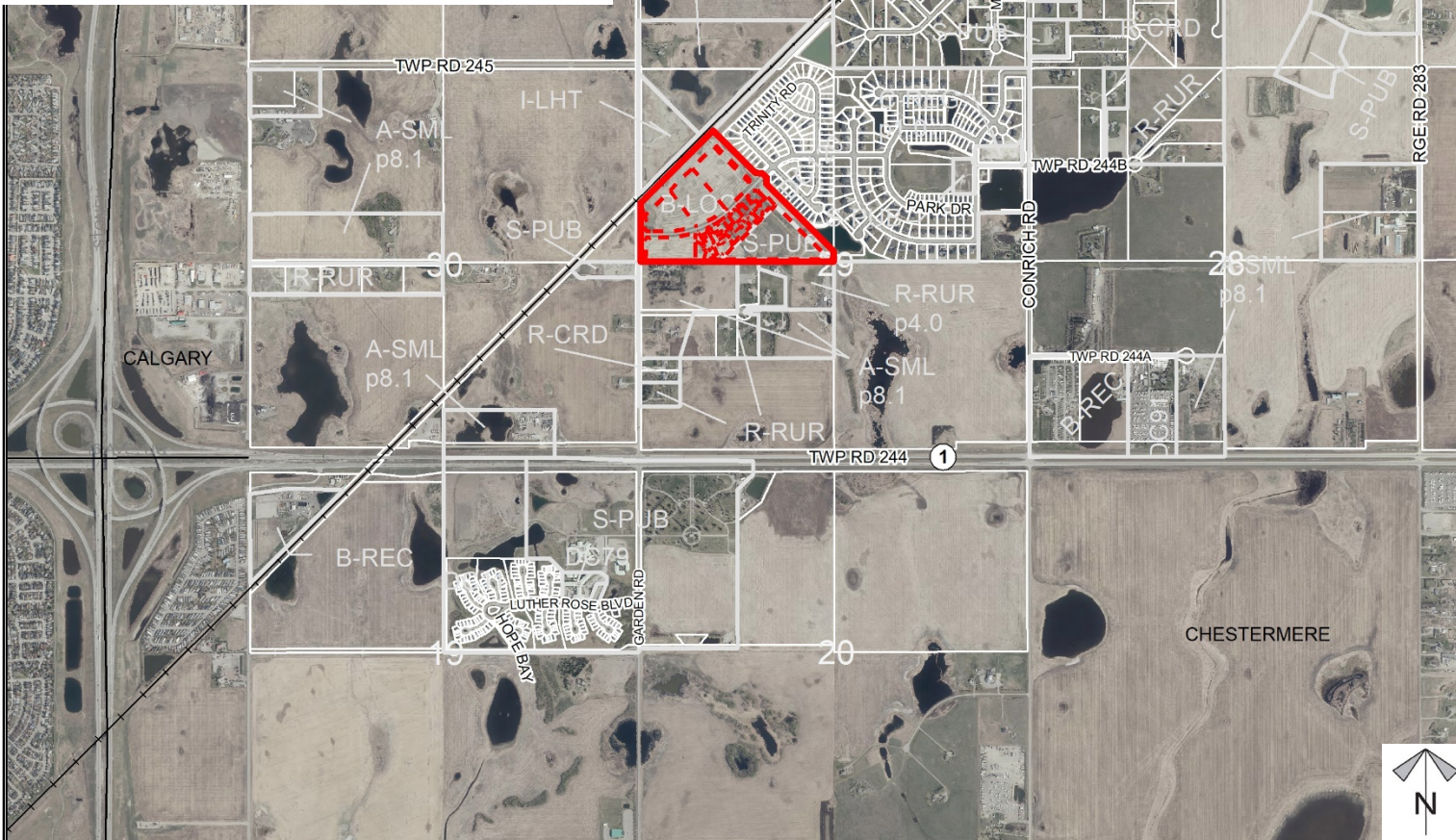


Redesignation Proposal

Note: This application relates PL20210078, amending the South Conrigh Conceptual Scheme to allow these uses.

Division: 5
Roll: 04329003
File: PL20210113
Printed: June 10, 2021
Legal: A portion of NW-29-
24-28-W04M





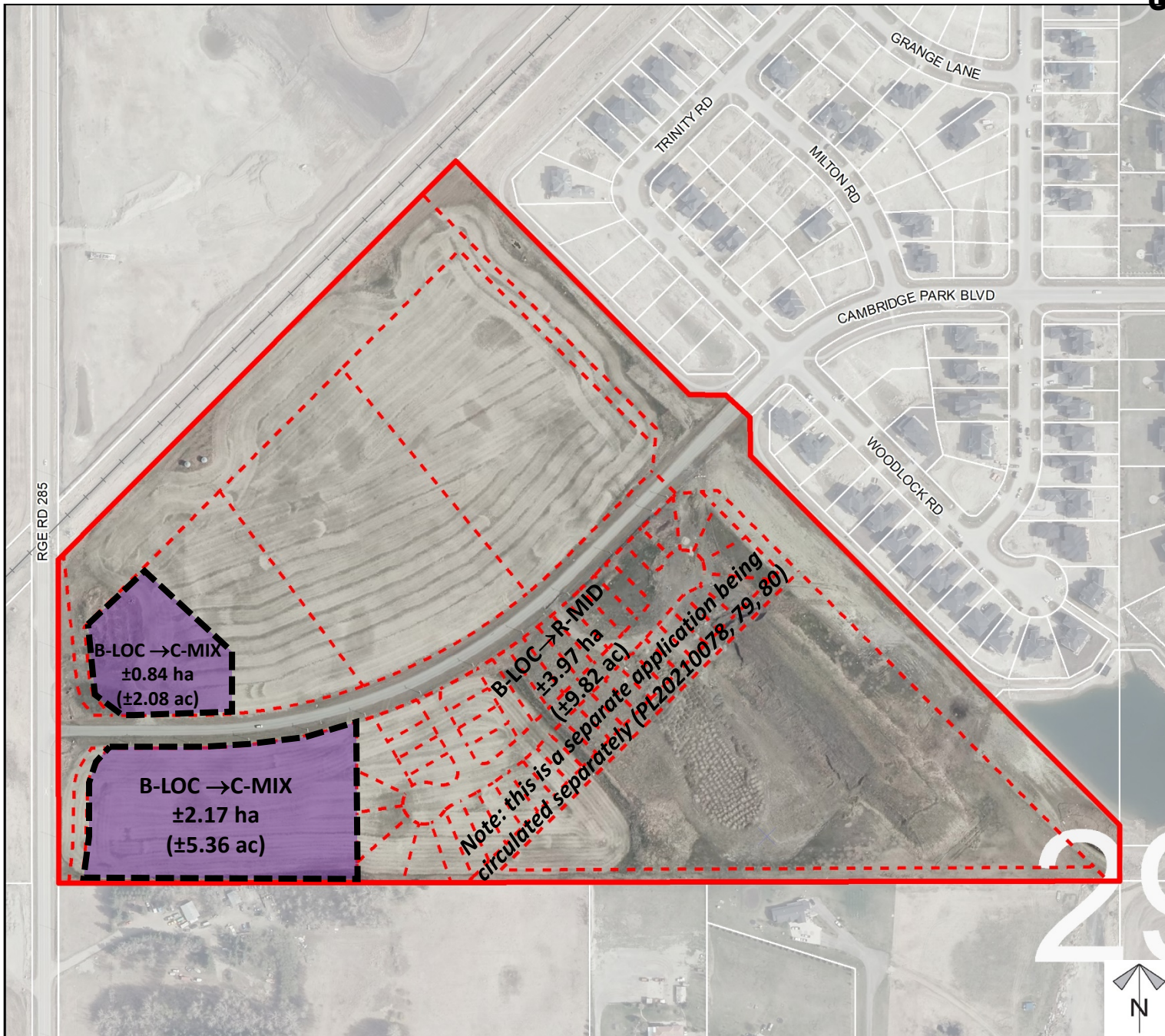
Development Proposal

Redesignation Proposal

To redesignate ± 3.01 hectares (± 7.44 acres) from Business, Local Campus District (B-LOC) to Commercial, Mixed Urban District (C-MIX) to facilitate future subdivision into 2 lots for commercial and senior care facility developments.

Note: This application relates PL20210078, amending the South Conrich Conceptual Scheme to allow these uses.

Division: 5
Roll: 04329003
File: PL20210113
Printed: June 10, 2021
Legal: A portion of NW-29-24-28-W04M



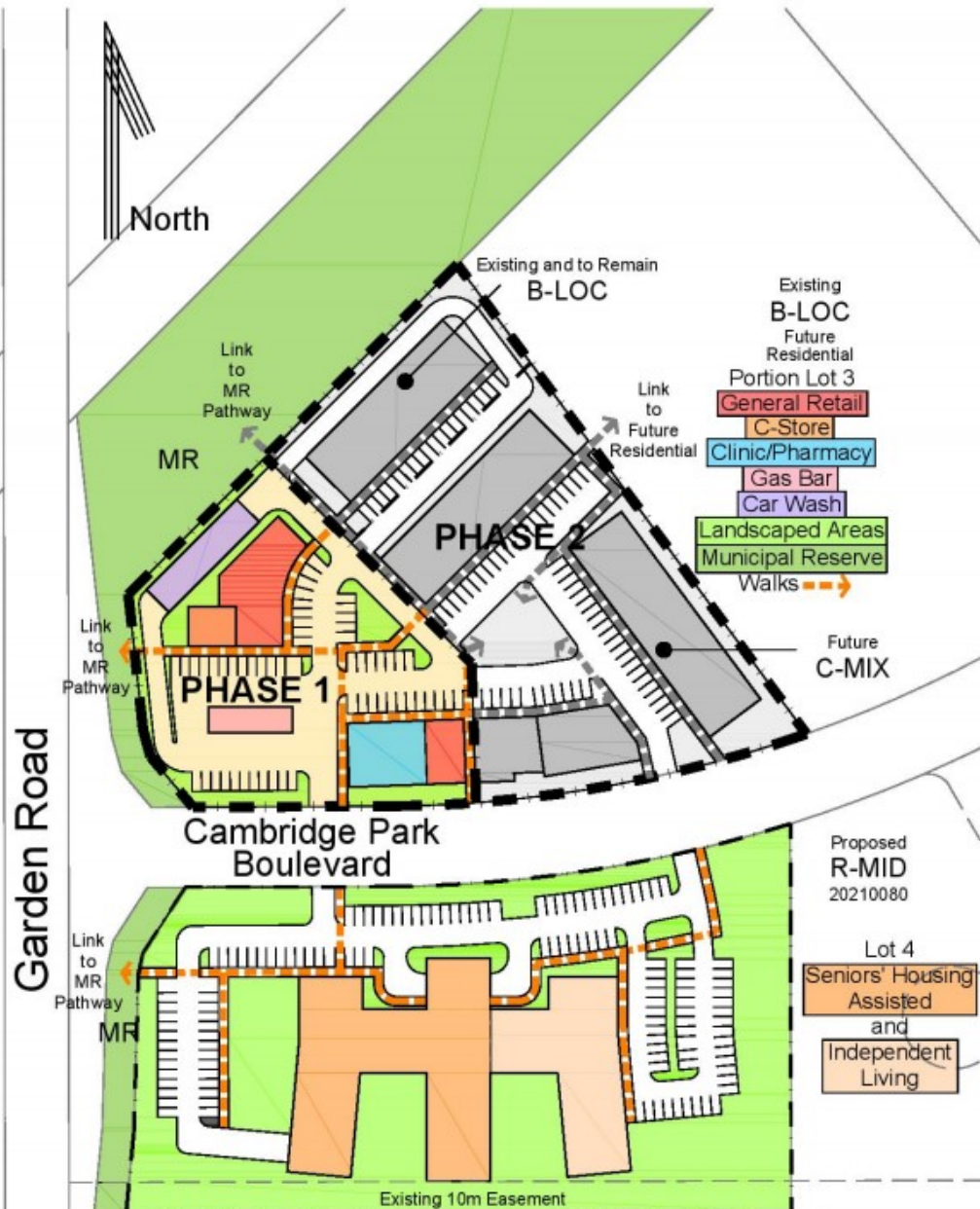


Development Proposal

Redesignation Proposal

To redesignate ± 3.01 hectares (± 7.44 acres) from Business, Local Campus District (B-LOC) to Commercial, Mixed Urban District (C-MIX) to facilitate future subdivision into 2 lots for commercial and senior care facility developments.

Note: This application relates PL20210078, amending the South Conrich Conceptual Scheme to allow these uses.



Concept Only - Subject to Change
NTS - No measurements are to be taken from this concept



Division: 5
Roll: 04329003
File: PL20210113
Printed: June 10, 2021
Legal: A portion of NW-29-24-28-W04M



Environmental

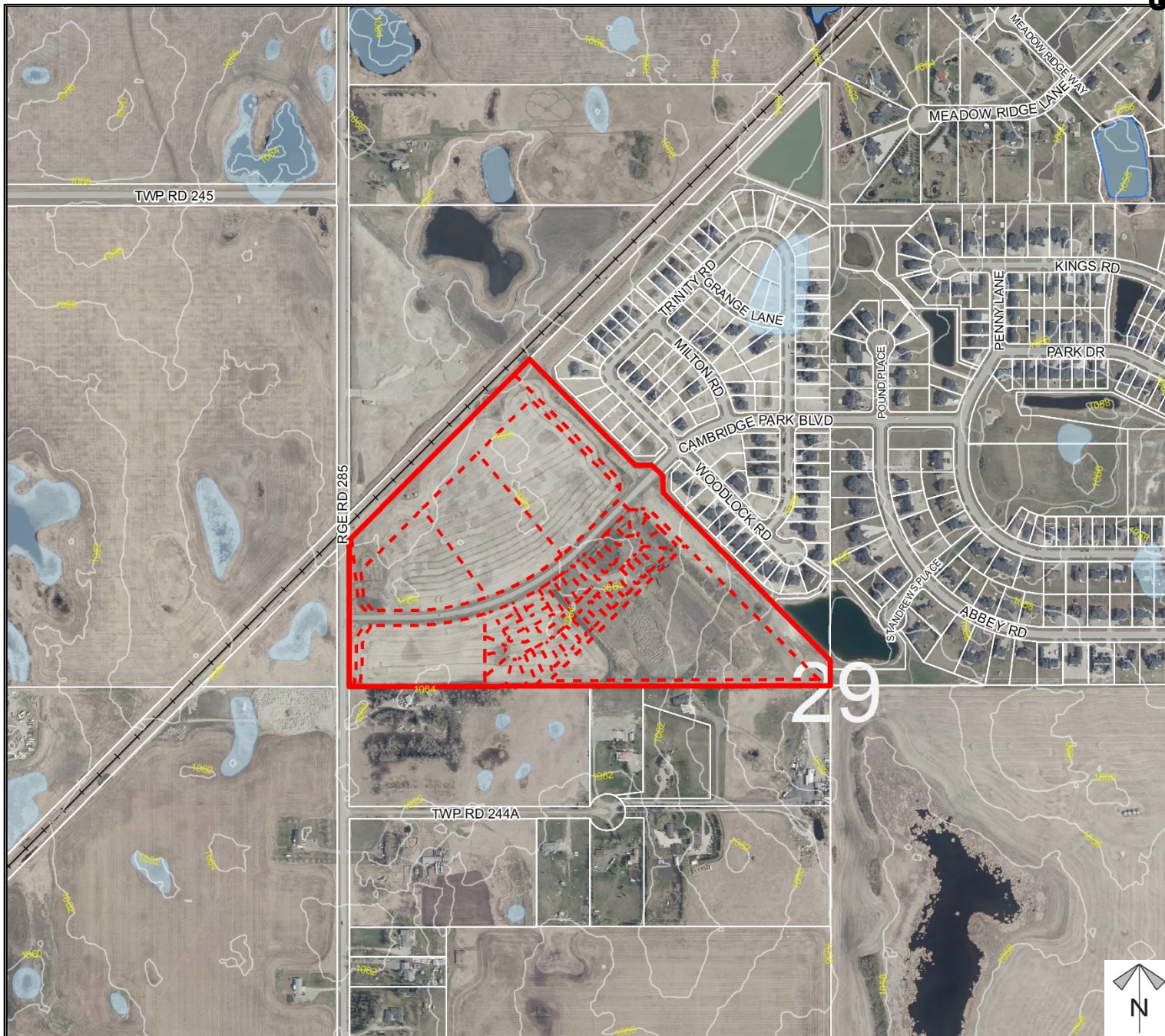
Redesignation Proposal

To redesignate ± 3.01 hectares (± 7.44 acres) from Business, Local Campus District (B-LOC) to Commercial, Mixed Urban District (C-MIX) to facilitate future subdivision into 2 lots for commercial and senior care facility developments.

Note: This application relates PL20210078, amending the South Garrieh Conceptual

-  Subject Lands
-  Contour - 2 meters
-  Riparian Setbacks
-  Alberta Wetland Inventory
-  Surface Water

Division: 5
Roll: 04329003
File: PL20210113
Printed: June 10, 2021
Legal: A portion of NW-29-24-28-W04M



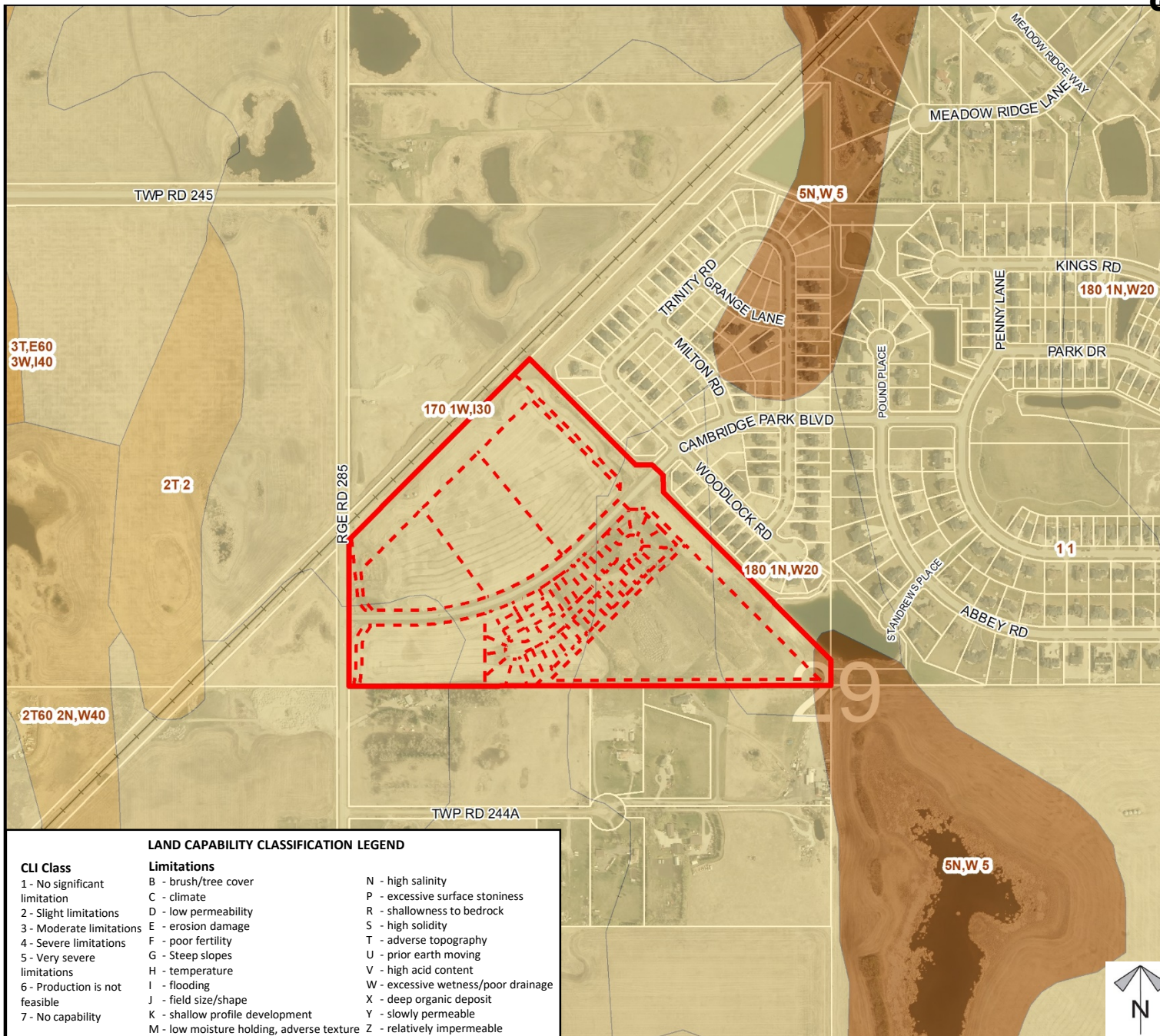


Soil Classifications

Redesignation Proposal

To redesignate ±3.01 hectares (±7.44 acres) from Business, Local Campus District (B-LOC) to Commercial, Mixed Urban District (C-MIX) to facilitate future subdivision into 2 lots for commercial and senior care facility developments.

Note: This application relates PL20210078, amending the South Conrich Conceptual Scheme to allow these uses.



LAND CAPABILITY CLASSIFICATION LEGEND

CLI Class	Limitations	
1 - No significant limitation	B - brush/tree cover	N - high salinity
2 - Slight limitations	C - climate	P - excessive surface stoniness
3 - Moderate limitations	D - low permeability	R - shallowness to bedrock
4 - Severe limitations	E - erosion damage	S - high solidity
5 - Very severe limitations	F - poor fertility	T - adverse topography
6 - Production is not feasible	G - Steep slopes	U - prior earth moving
7 - No capability	H - temperature	V - high acid content
	I - flooding	W - excessive wetness/poor drainage
	J - field size/shape	X - deep organic deposit
	K - shallow profile development	Y - slowly permeable
	M - low moisture holding, adverse texture	Z - relatively impermeable

Division: 5
Roll: 04329003
File: PL20210113
Printed: June 10, 2021
Legal: A portion of NW-29-24-28-W04M

Redesignation Proposal

To redesignate ±3.01 hectares (±7.44 acres) from Business, Local Campus District (B-LOC) to Commercial, Mixed Urban District (C-MIX) to facilitate future subdivision into 2 lots for commercial and senior care facility developments.

Note: This application relates PL20210078, amending the South Corrich Conceptual Scheme to allow these uses.

Legend

Support



Not Support



Division: 5
Roll: 04329003
File: PL20210113
Printed: June 10, 2021
Legal: A portion of NW-29-
24-28-W04M

