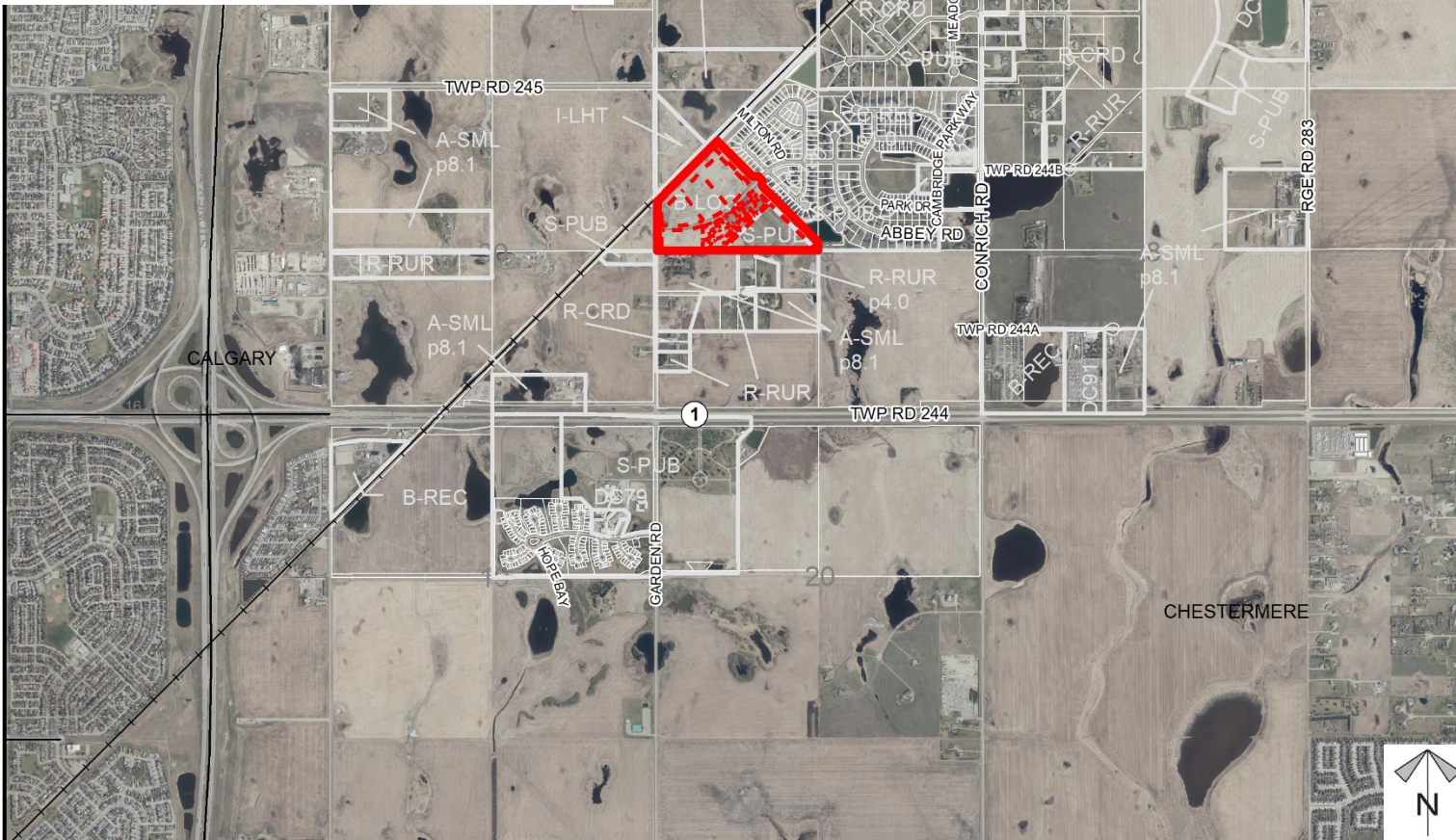


ASP Amendment;
Conceptual Scheme
Amendment;
Redesignation Proposal

PL20210080: To redesignate ±3.97 hectares (±9.82 acres) from Business, Local Campus District (B-LOC) to Residential, Mid-Density Urban District (R-MID) to facilitate future subdivision into 47 lots.

Division: 05
Roll: 04329003
File: PL20210080
Printed: May 5, 2021
Legal: A portion of NW-29-
24-28-W04M



Development Proposal

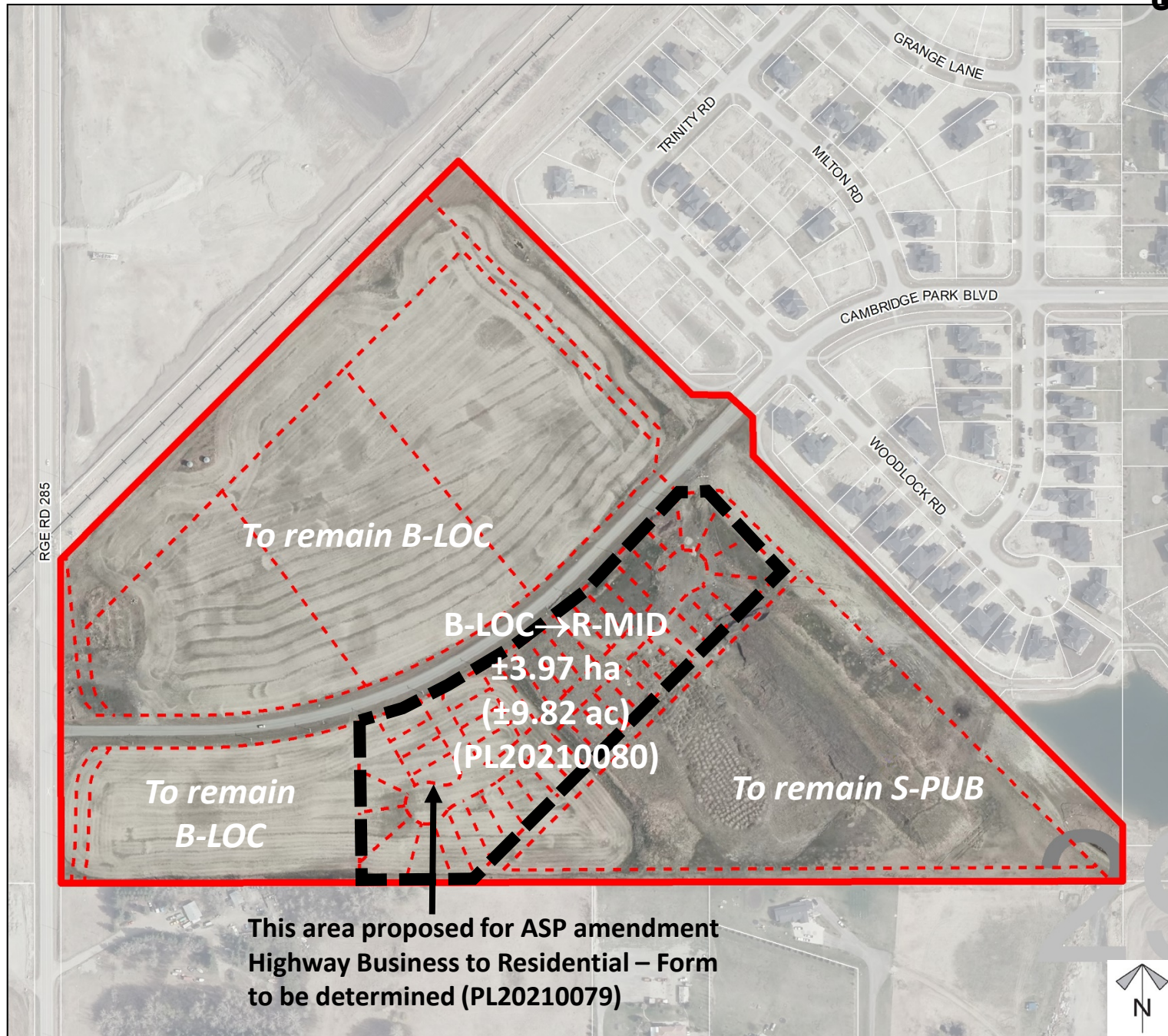
ASP Amendment:
Conceptual Scheme
Amendment:
Redesignation Proposal

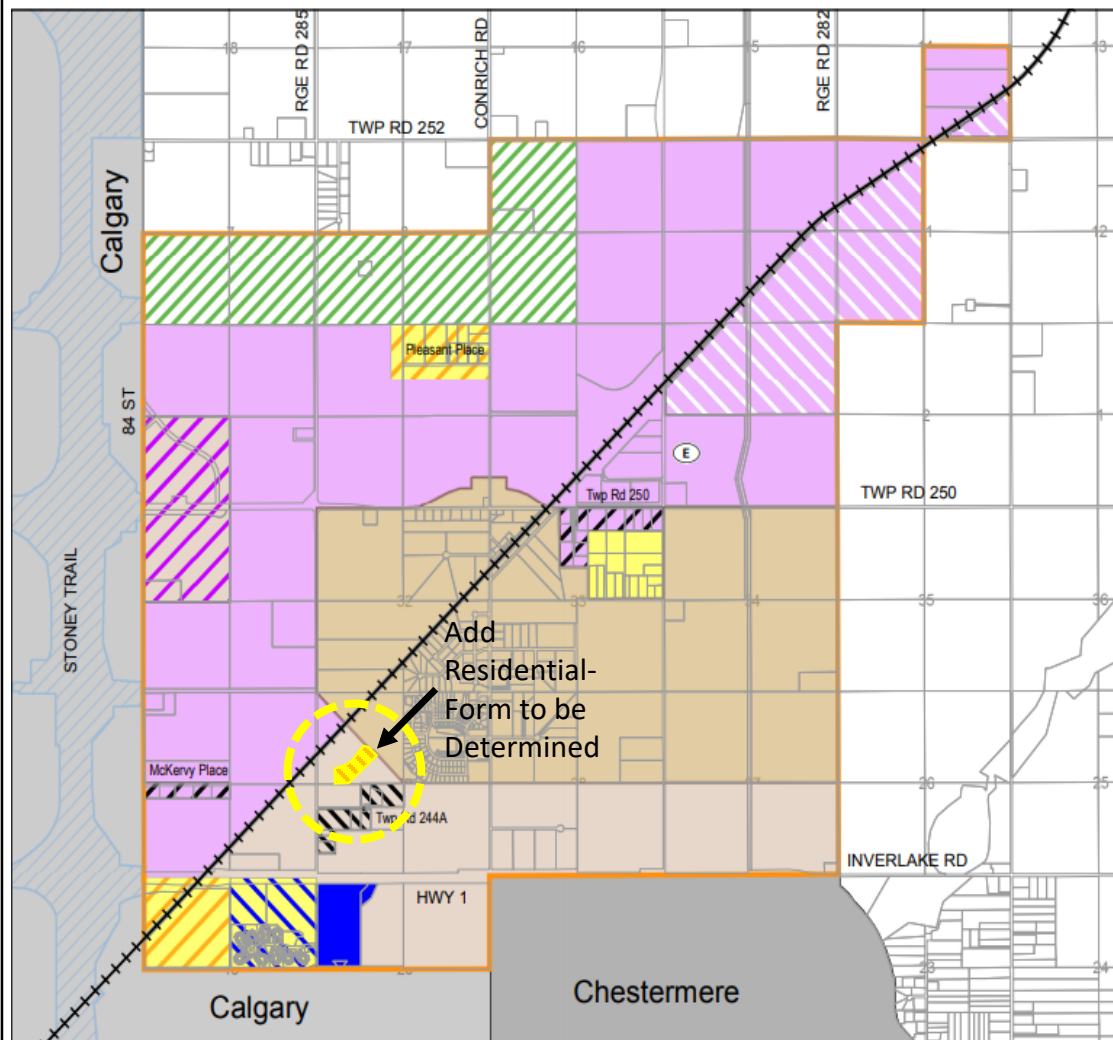
PL20210078: To amend the South Conrich Conceptual Scheme, including Appendix D, in order to allow residential use within a portion of Cell D.

PL20210079: To amend the Conrich Area Structure Plan to change a portion of the subject lands from Highway-Business to Residential –Form to Be Determined, to allow residential use.

PL20210080: To redesignate ±3.97 hectares (±9.82 acres) from Business, Local Campus District (B-LOC) to Residential, Mid-Density Urban District (R-MID) to facilitate future subdivision into 47 lots.

Division: 05
 Roll: 04329003
 File: PL20210080
 Printed: May 5, 2021
 Legal: A portion of NW-29-24-28-W04M



Map 5:
Land Use Strategy

- ASP Boundary
- Future Policy Area
- Residential-Form to be determined
- Country Residential
- Institutional/Residential
- Institutional
- Industrial
- Heavy Industrial
- Industrial Transition
- Highway Business Transition
- Highway Business
- Highway Business/Industrial
- Long Term Development Area
- Emergency Services
- Transportation and Utility Corridor
- CN Railway

0 0.25 0.5 1 1.5 2
Km



**ASP Amendment:
Conceptual Scheme
Amendment:
Redesignation Proposal**

PL20210078: To amend the South Conrich Conceptual Scheme, including Appendix D, in order to allow residential use within a portion of Cell D.

PL20210079: To amend the Conrich Area Structure Plan to change a portion of the subject lands from Highway-Business to Residential –Form to Be Determined, to allow residential use.

PL20210080: To redesignate ± 3.97 hectares (± 9.82 acres) from Business, Local Campus District (B-LOC) to Residential, Mid-Density Urban District (R-MID) to facilitate future subdivision into 47 lots.

Division: 05

Roll: 04329003

File: PL20210080

Printed: May 5, 2021

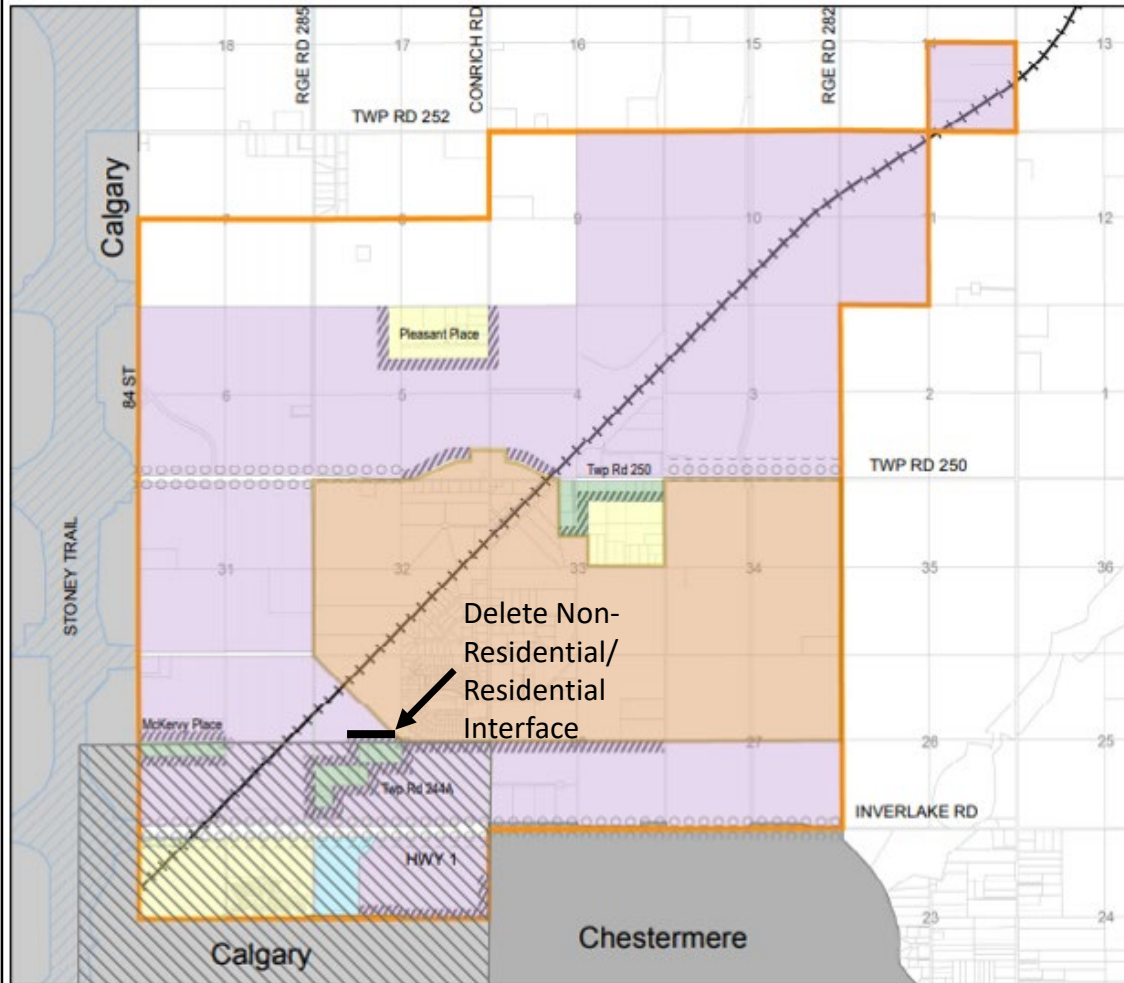
Legal: A portion of NW-29-24-28-W04M

Area Structure Plan
CONRICH

This map is conceptual in nature. No measurements or area calculations should be taken from this map.



Map 6: Non-Residential/ Residential Interface



- ASP Boundary
- Future Policy Area
- Residential
- Institutional
- Business
- Transition
- Non-Residential/
Residential Interface
- Gateways
- Transportation and Utility
Corridor
- Key Focus Area
(RVC/Calgary
Intermunicipal
Development Plan)
- CN Railway



Area Structure Plan
CONRICH

This map is conceptual in nature. No measurements or area calculations should be taken from this map.

ASP Amendment: Conceptual Scheme Amendment: Redesignation Proposal

PL20210078: To amend the South Conrich Conceptual Scheme, including Appendix D, in order to allow residential use within a portion of Cell D.

PL20210079: To amend the Conrich Area Structure Plan to change a portion of the subject lands from Highway-Business to Residential –Form to Be Determined, to allow residential use.

PL20210080: To redesignate ± 3.97 hectares (± 9.82 acres) from Business, Local Campus District (B-LOC) to Residential, Mid-Density Urban District (R-MID) to facilitate future subdivision into 47 lots.

Division: 05

Roll: 04329003

File: PL20210080

Printed: May 5, 2021

Legal: A portion of NW-29-24-28-W04M



Environmental

**ASP Amendment:
Conceptual Scheme
Amendment:
Redesignation Proposal**

PL20210078: To amend the South Conrich Conceptual Scheme, including Appendix D, in order to allow residential use within a portion of Cell D.

PL20210079: To amend the Conrich Area Structure Plan to change a portion of the subject lands from Highway-Business to Residential –Form to Be Determined, to allow residential use.

PL20210080: To redesignate ± 3.97 hectares (± 9.82 acres) from Business, Local Campus District (B-LOC) to Residential, Mid-Density Urban District (R-MID) to facilitate future subdivision into 47 lots.

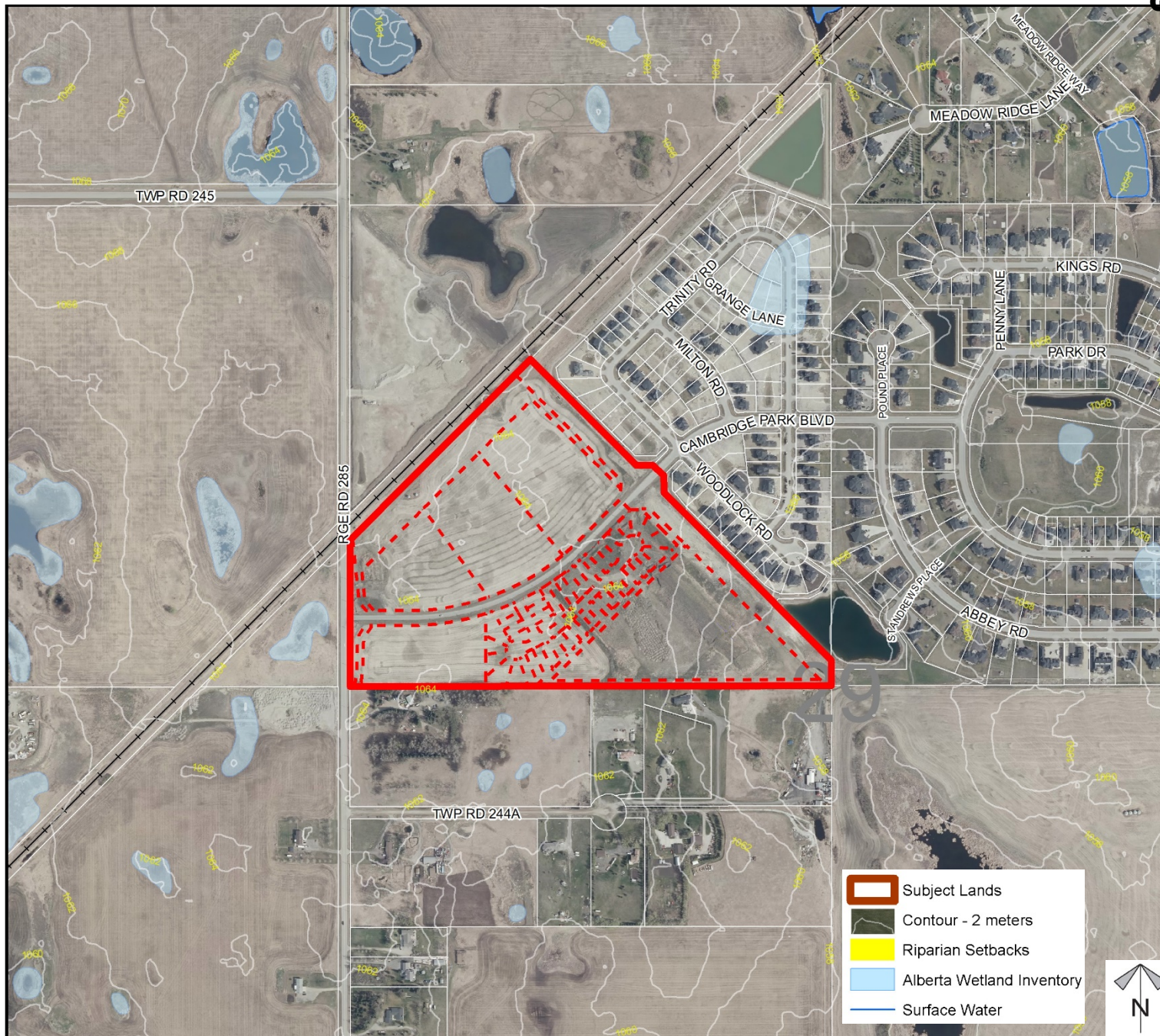
Division: 05

Roll: 04329003

File: PL20210080

Printed: May 5, 2021

Legal: A portion of NW-29-24-28-W04M





Soil Classifications

ASP Amendment: Conceptual Scheme Amendment: Redesignation Proposal

PL20210078: To amend the South Conrich Conceptual Scheme, including Appendix D, in order to allow residential use within a portion of Cell D.

PL20210079: To amend the Conrich Area Structure Plan to change a portion of the subject lands from Highway-Business to Residential –Form to Be Determined, to allow residential use.

PL20210080: To redesignate ±3.97 hectares (±9.82 acres) from Business, Local Campus District (B-LOC) to Residential, Mid-Density Urban District (R-MID) to facilitate future subdivision into 47 lots.

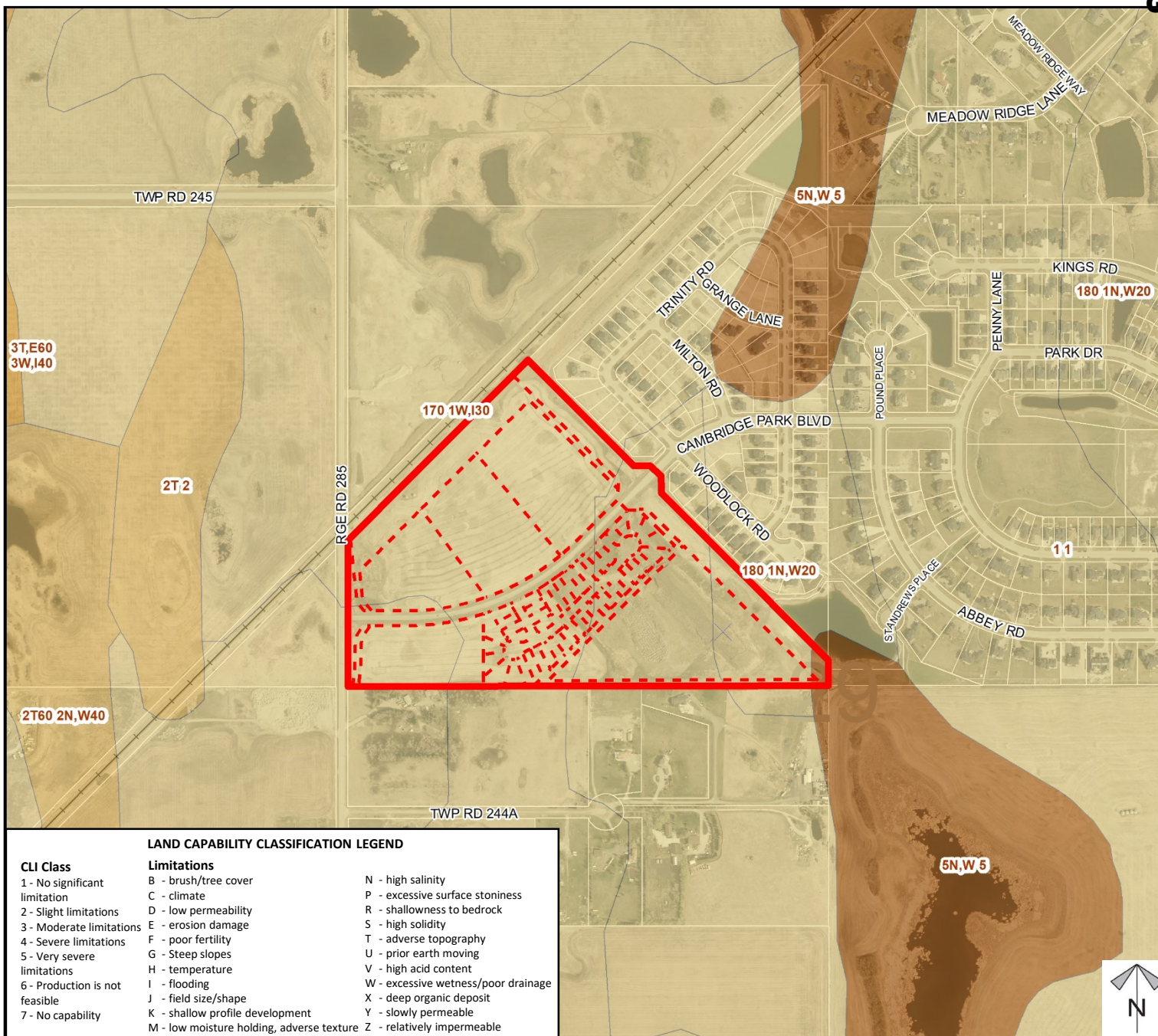
Division: 05

Roll: 04329003

File: PL20210080

Printed: May 5, 2021

Legal: A portion of NW-29-24-28-W04M



ASP Amendment;
Conceptual Scheme
Amendment;
Redesignation Proposal

Division: 05
Roll: 04329003
File: PL20210080
Printed: May 5, 2021
Legal: A portion of NW-29-
24-28-W04M

