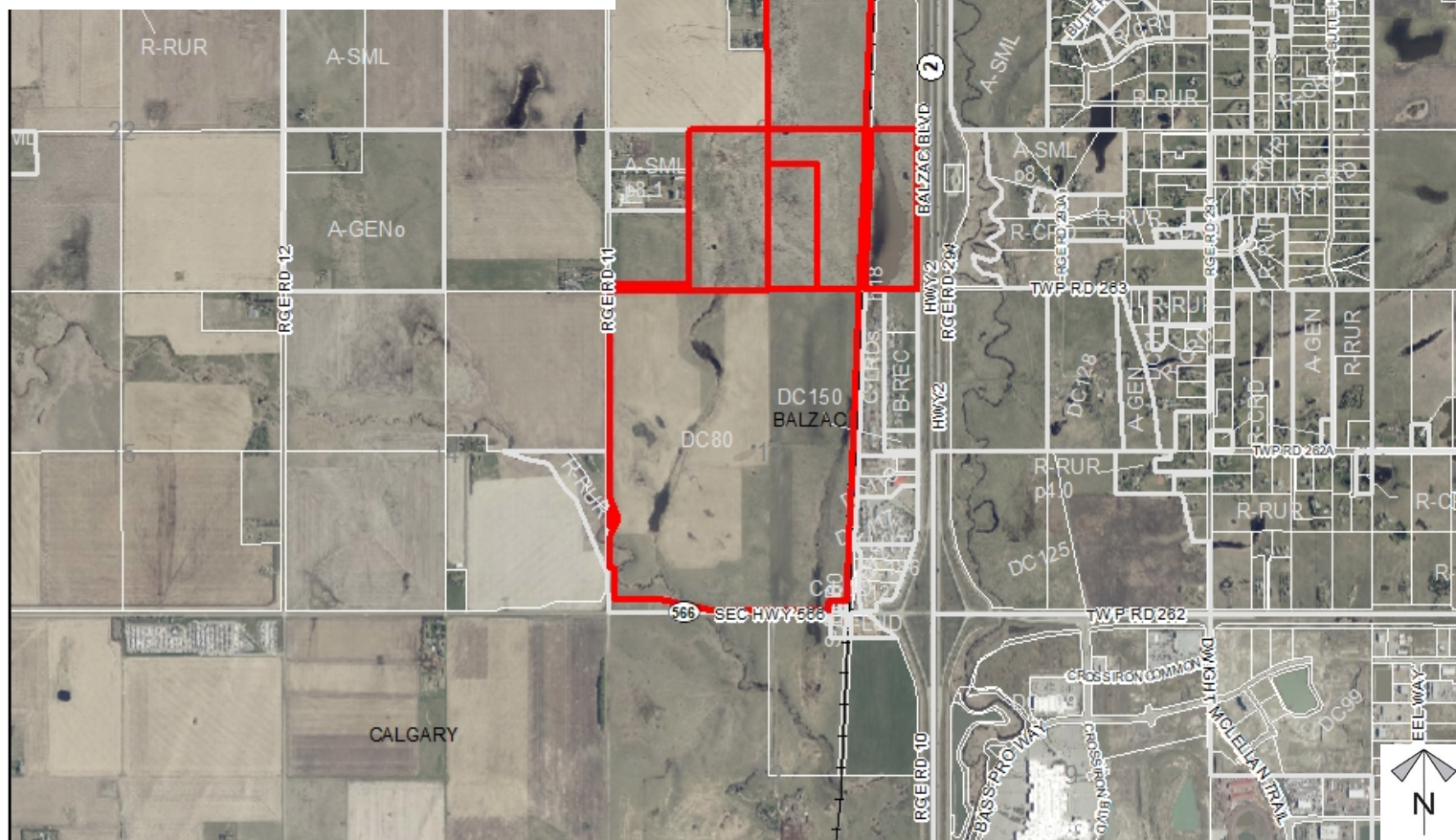
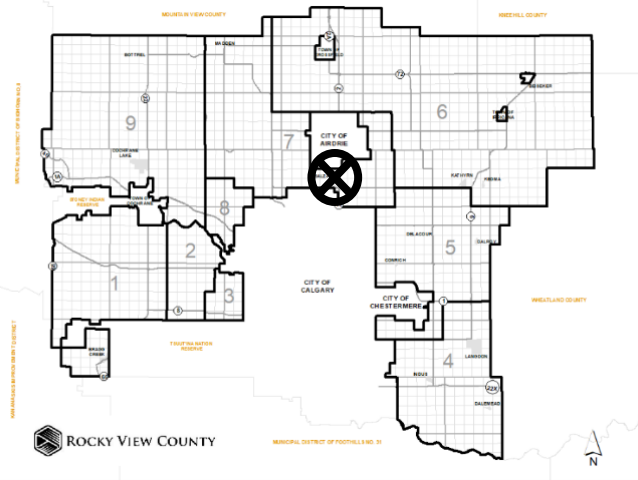


Conceptual Scheme Proposal

To adopt the Rocky Creek Conceptual Scheme that provides a policy framework to guide future redesignation and subdivision applications, in order to facilitate the development of a residential community with industrial and mixed uses.

Division: 7
Roll: 06513002/06524002/
06524007/06524001/
06524004
File: PL20200173
Legal: Lot:1 Block:5
Plan:0311824; within W-13-
26-01-W05M, SW/SE/NE-24-
26-01-W05M

Printed: January 6, 2021

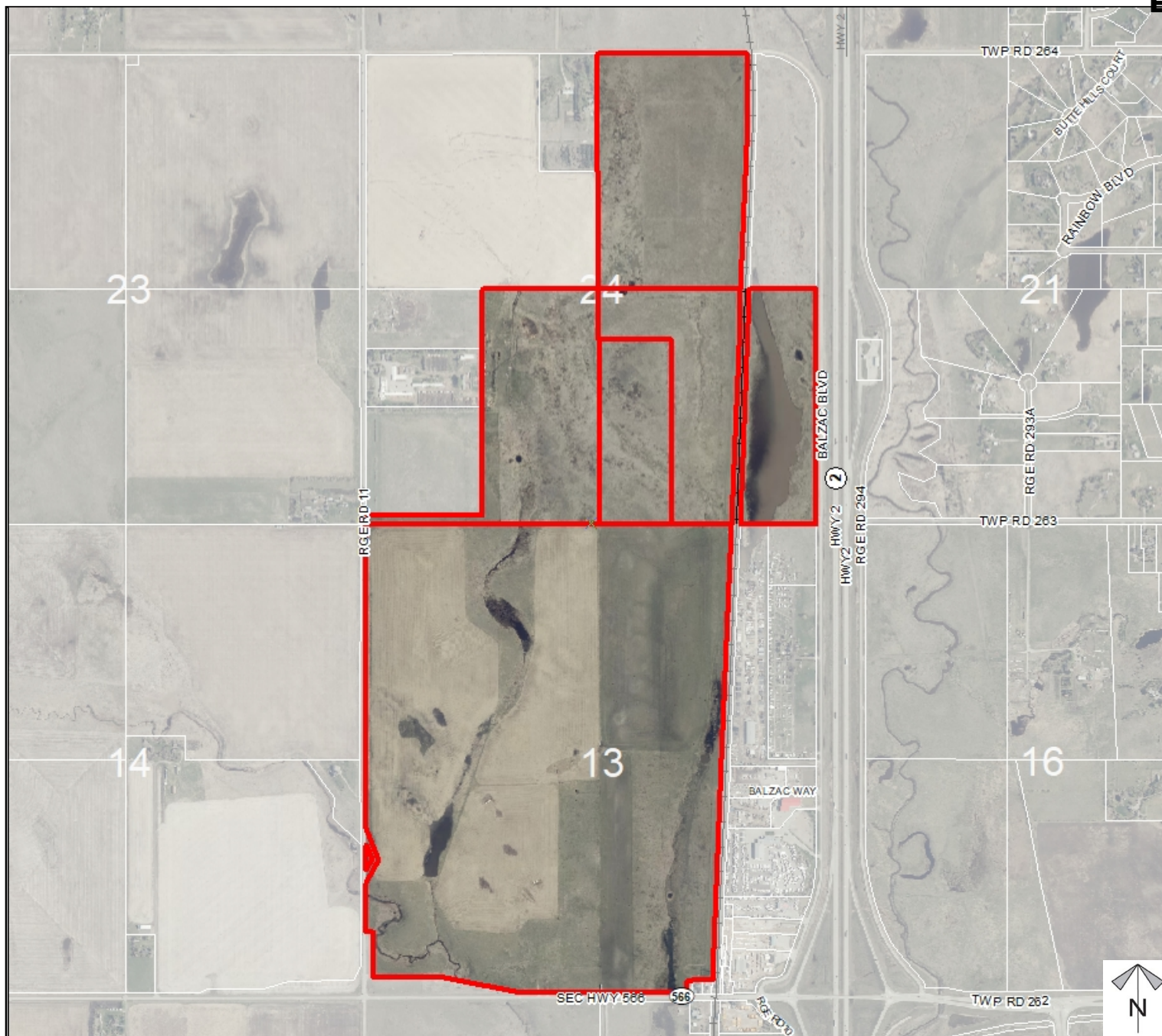




Development Proposal

Conceptual Scheme Proposal

To adopt the Rocky Creek Conceptual Scheme that provides a policy framework to guide future redesignation and subdivision applications, in order to facilitate the development of a residential community with industrial and mixed uses.



Division: 7
Roll: 06513002/06524002/
06524007/06524001/
06524004
File: PL20200173
Legal: Lot:1 Block:5
Plan:0311824; within W-13-
26-01-W05M, SW/SE/NE-24-
26-01-W05M

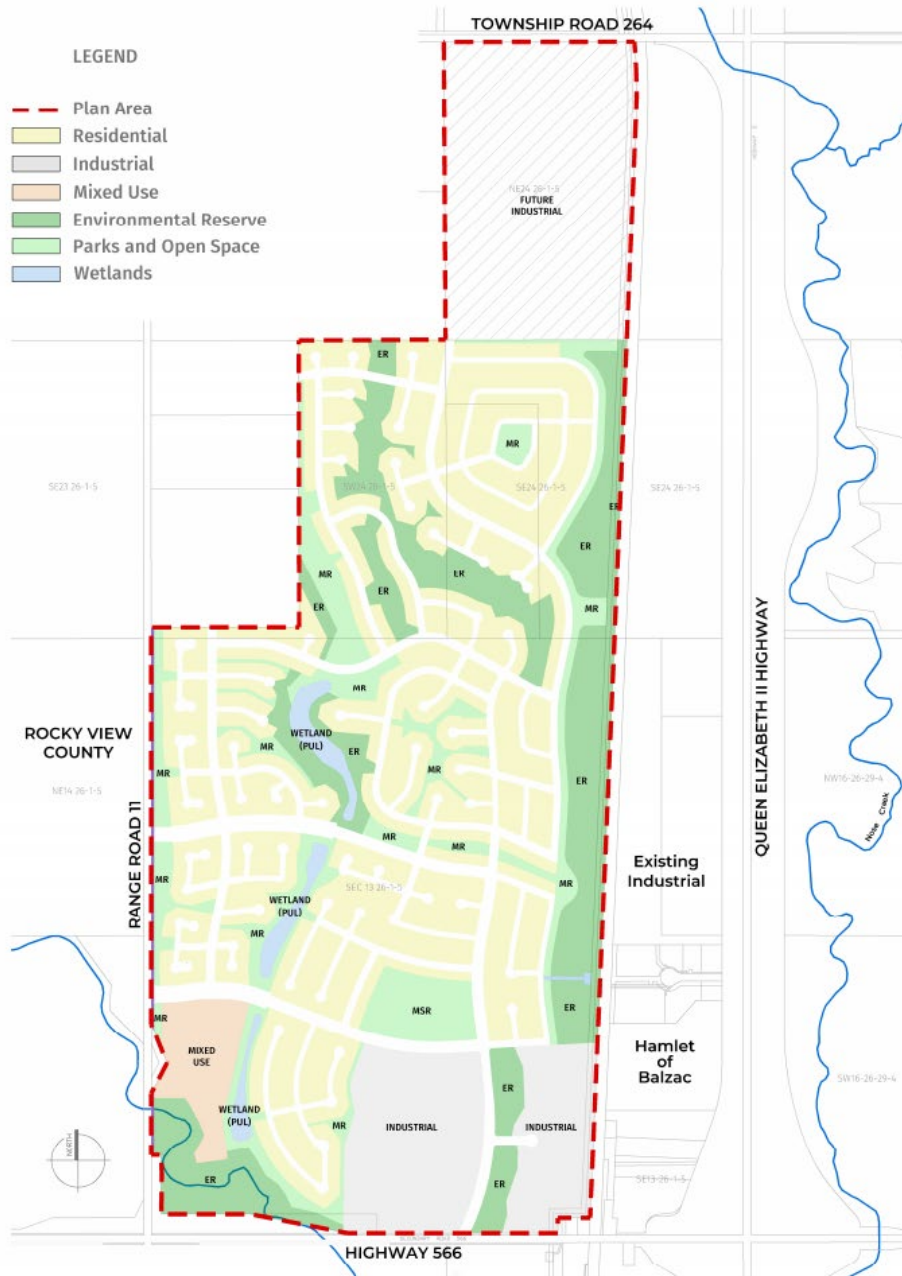
Printed: January 6, 2021



Development Concept

Conceptual Scheme Proposal

To adopt the Rocky Creek Conceptual Scheme that provides a policy framework to guide future redesignation and subdivision applications, in order to facilitate the development of a residential community with industrial and mixed uses.

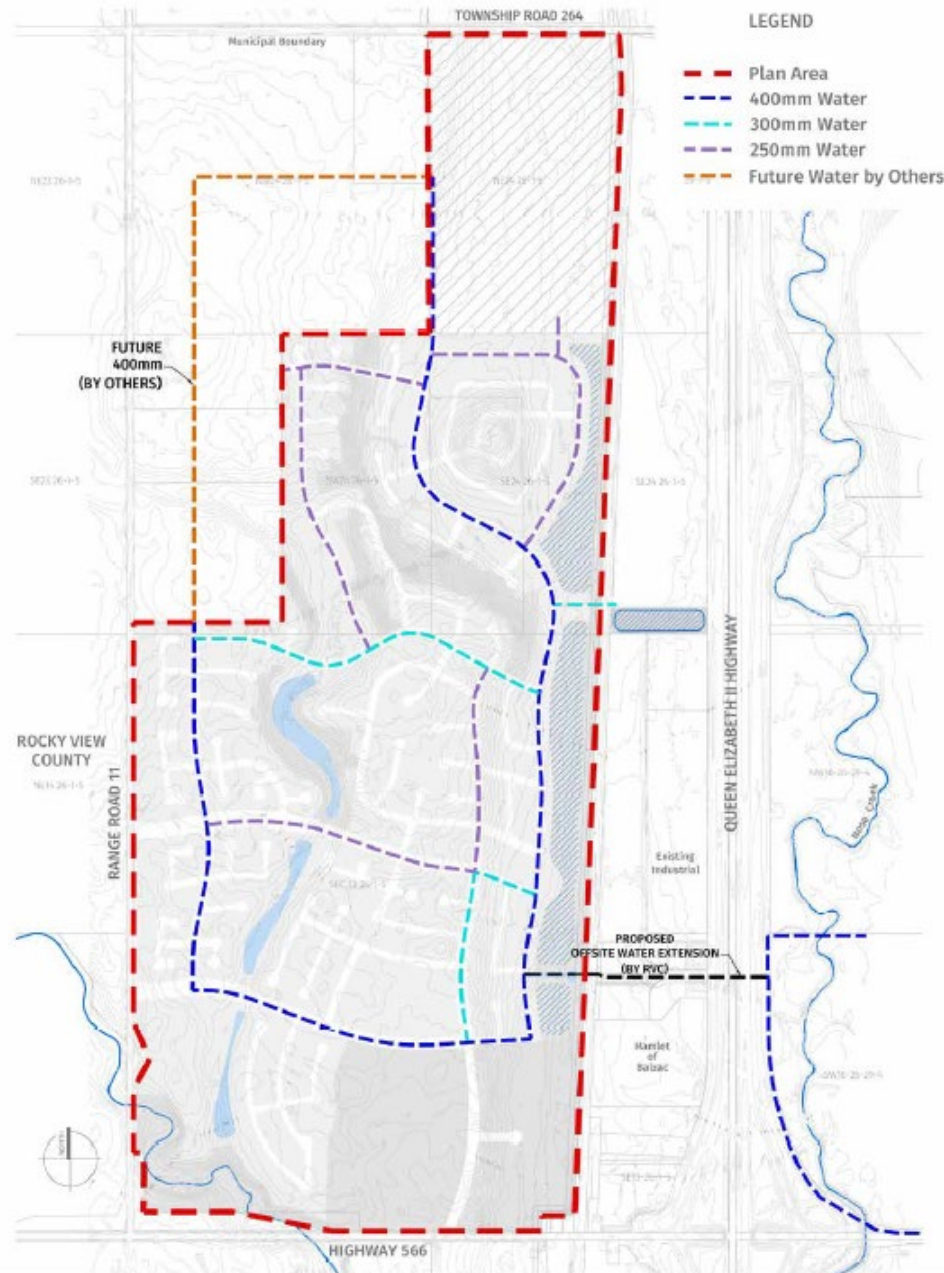




Water Servicing

Conceptual Scheme Proposal

To adopt the Rocky Creek Conceptual Scheme that provides a policy framework to guide future redesignation and subdivision applications, in order to facilitate the development of a residential community with industrial and mixed uses.



Division: 7
 Roll: 06513002/06524002/
 06524007/06524001/
 06524004
 File: PL20200173
 Legal: Lot:1 Block:5
 Plan:0311824; within W-13-
 26-01-W05M, SW/SE/NE-24-
 26-01-W05M

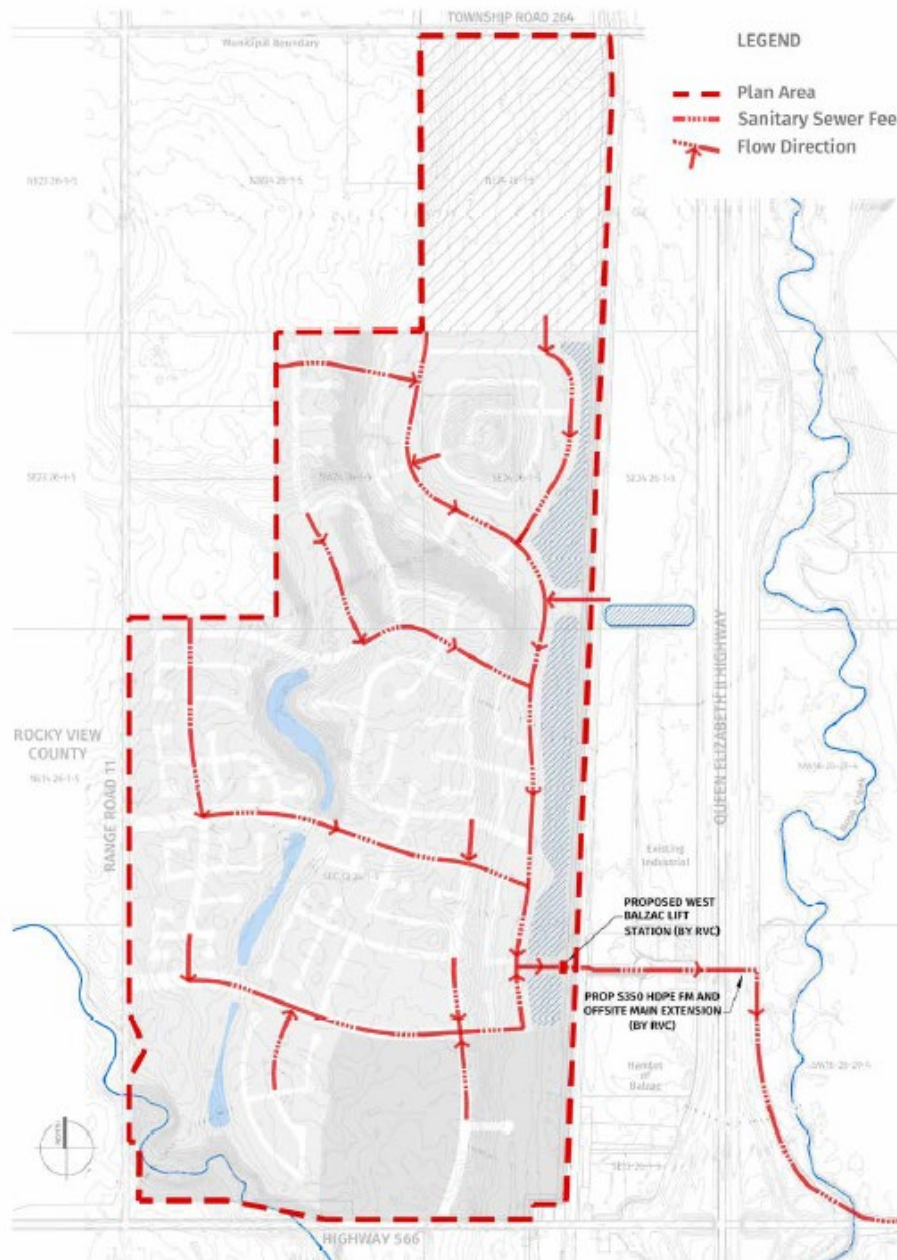
Printed: January 6, 2021



Wastewater Servicing

Conceptual Scheme Proposal

To adopt the Rocky Creek Conceptual Scheme that provides a policy framework to guide future redesignation and subdivision applications, in order to facilitate the development of a residential community with industrial and mixed uses.



Division: 7
 Roll: 06513002/06524002/
 06524007/06524001/
 06524004
 File: PL20200173
 Legal: Lot:1 Block:5
 Plan:0311824; within W-13-
 26-01-W05M, SW/SE/NE-24-
 26-01-W05M

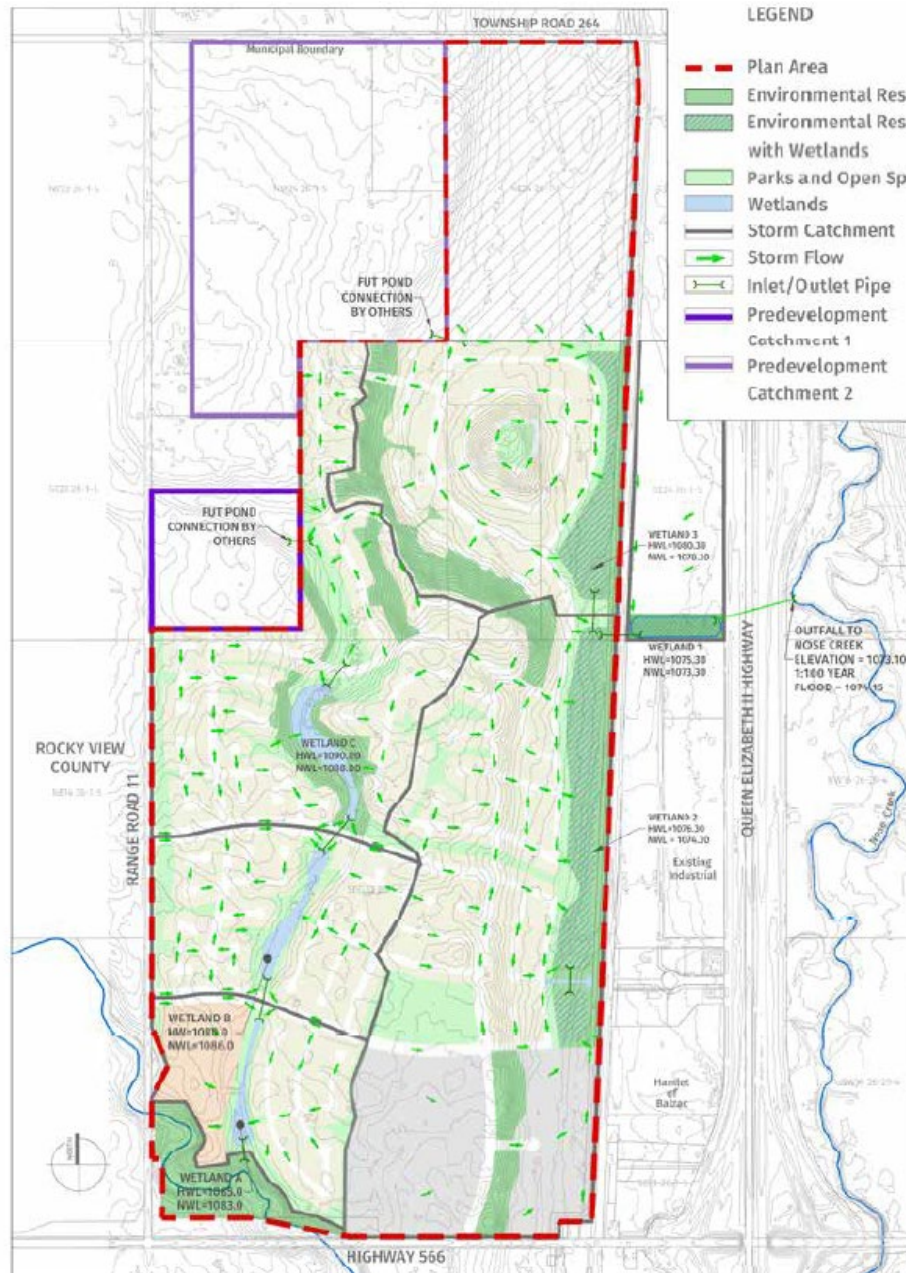
Printed: January 6, 2021



Stormwater

Conceptual Scheme Proposal

To adopt the Rocky Creek Conceptual Scheme that provides a policy framework to guide future redesignation and subdivision applications, in order to facilitate the development of a residential community with industrial and mixed uses.

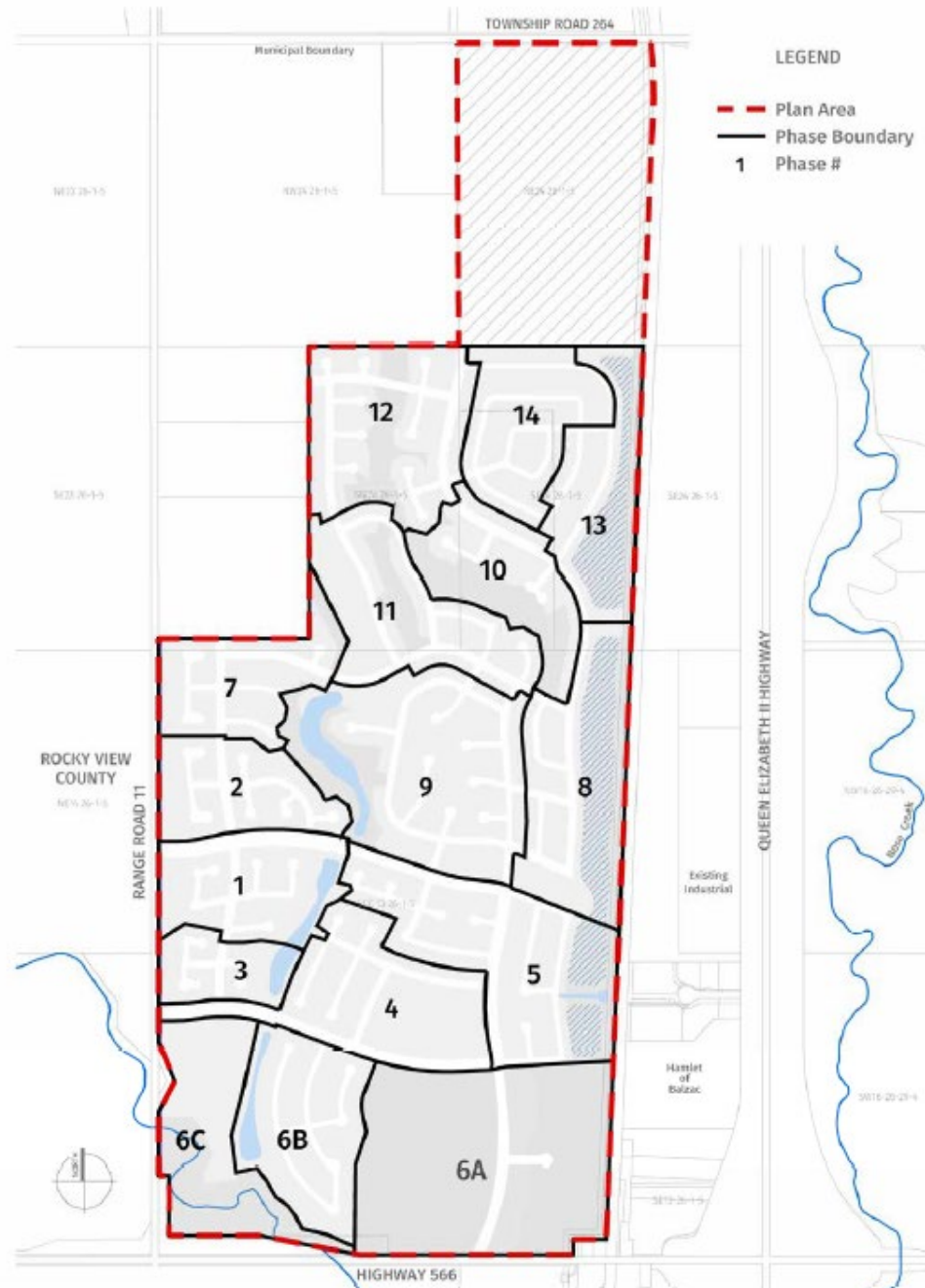




Development Phases

Conceptual Scheme Proposal

To adopt the Rocky Creek Conceptual Scheme that provides a policy framework to guide future redesignation and subdivision applications, in order to facilitate the development of a residential community with industrial and mixed uses.



Division: 7
 Roll: 06513002/06524002/
 06524007/06524001/
 06524004
 File: PL20200173
 Legal: Lot:1 Block:5
 Plan:0311824; within W-13-
 26-01-W05M, SW/SE/NE-24-
 26-01-W05M

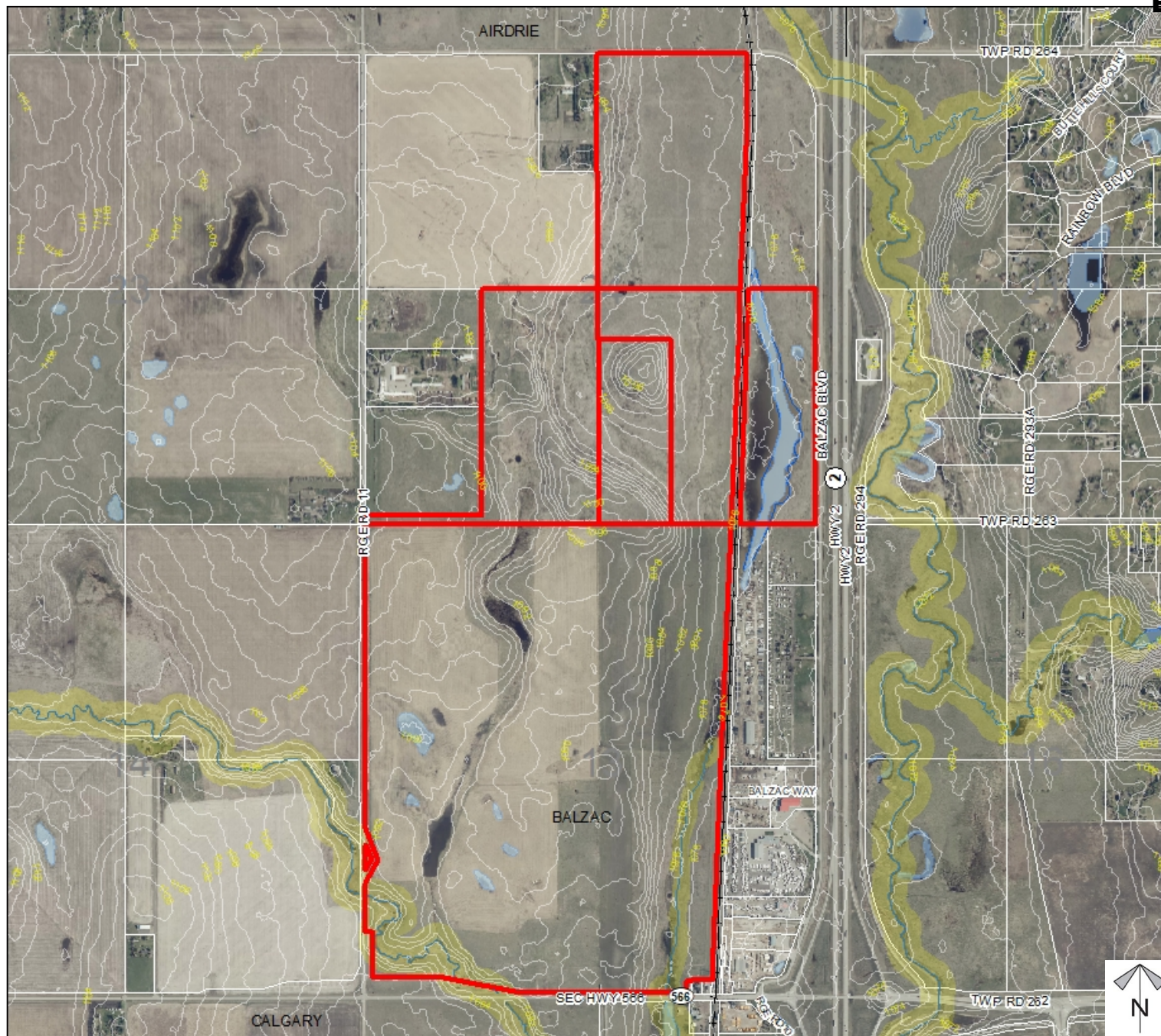
Printed: January 6, 2021



Environmental

Conceptual Scheme
Proposal

To adopt the Rocky Creek Conceptual Scheme that provides a policy framework to guide future redesignation and subdivision applications, in order to facilitate the development of a residential community with industrial and mixed uses.



- Subject Lands
- Contour - 2 meters
- Riparian Setbacks
- Alberta Wetland Inventory
- Surface Water

Division: 7
 Roll: 06513002/06524002/
 06524007/06524001/
 06524004
 File: PL20200173
 Legal: Lot:1 Block:5
 Plan:0311824; within W-13-
 26-01-W05M, SW/SE/NE-24-
 26-01-W05M

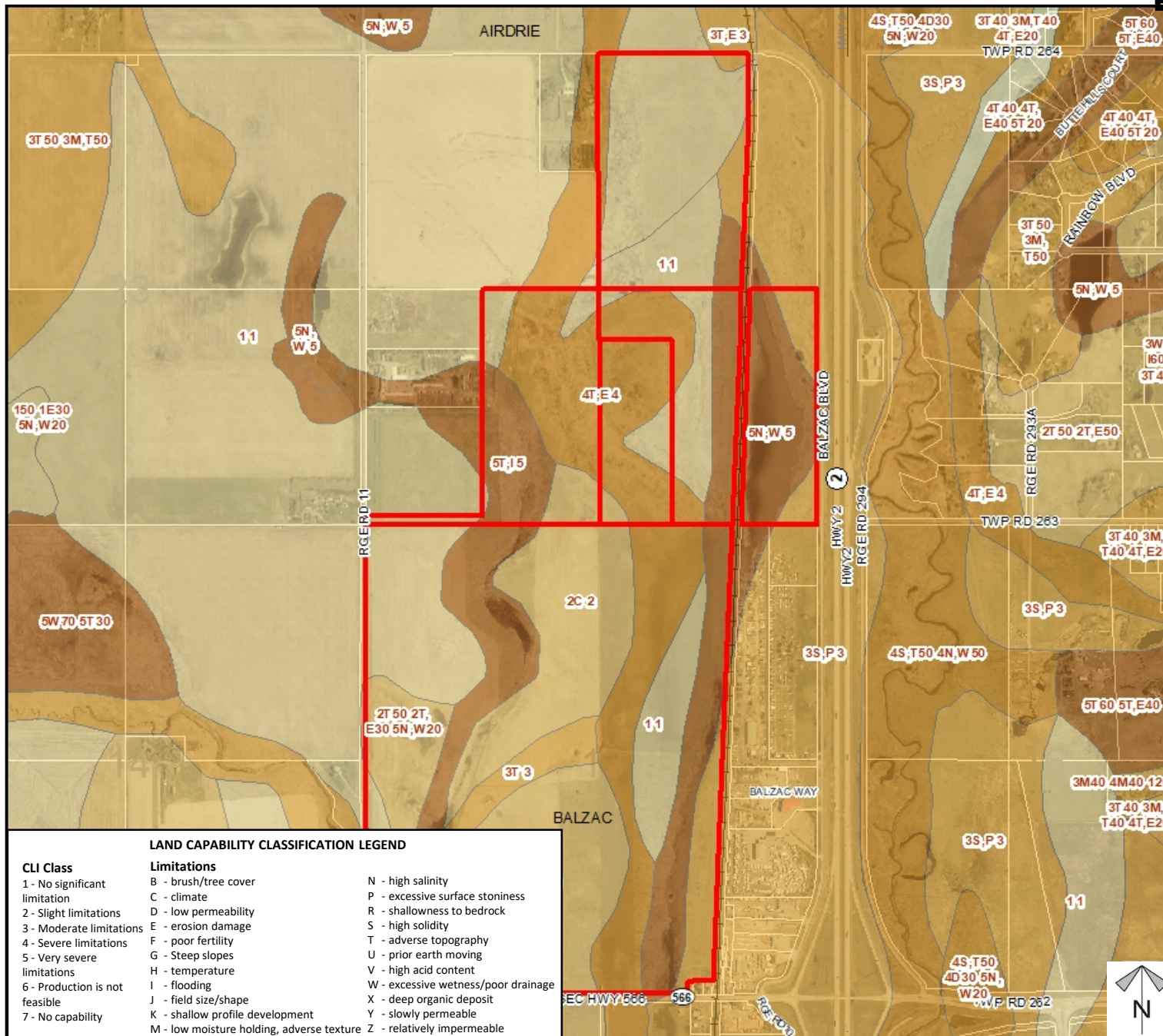
Printed: January 6, 2021

Conceptual Scheme Proposal

To adopt the Rocky Creek Conceptual Scheme that provides a policy framework to guide future redesignation and subdivision applications, in order to facilitate the development of a residential community with industrial and mixed uses.

Division: 7
Roll: 06513002/06524002/
06524007/06524001/
06524004
File: PL20200173
Legal: Lot:1 Block:5
Plan:0311824; within W-13-
26-01-W05M, SW/SE/NE-24-
26-01-W05M

Printed: January 6, 2021



Landowner Circulation Area

Conceptual Scheme Proposal

To adopt the Rocky Creek Conceptual Scheme that provides a policy framework to guide future redesignation and subdivision applications, in order to facilitate the development of a residential community with industrial and mixed uses.

Legend

Support (6)

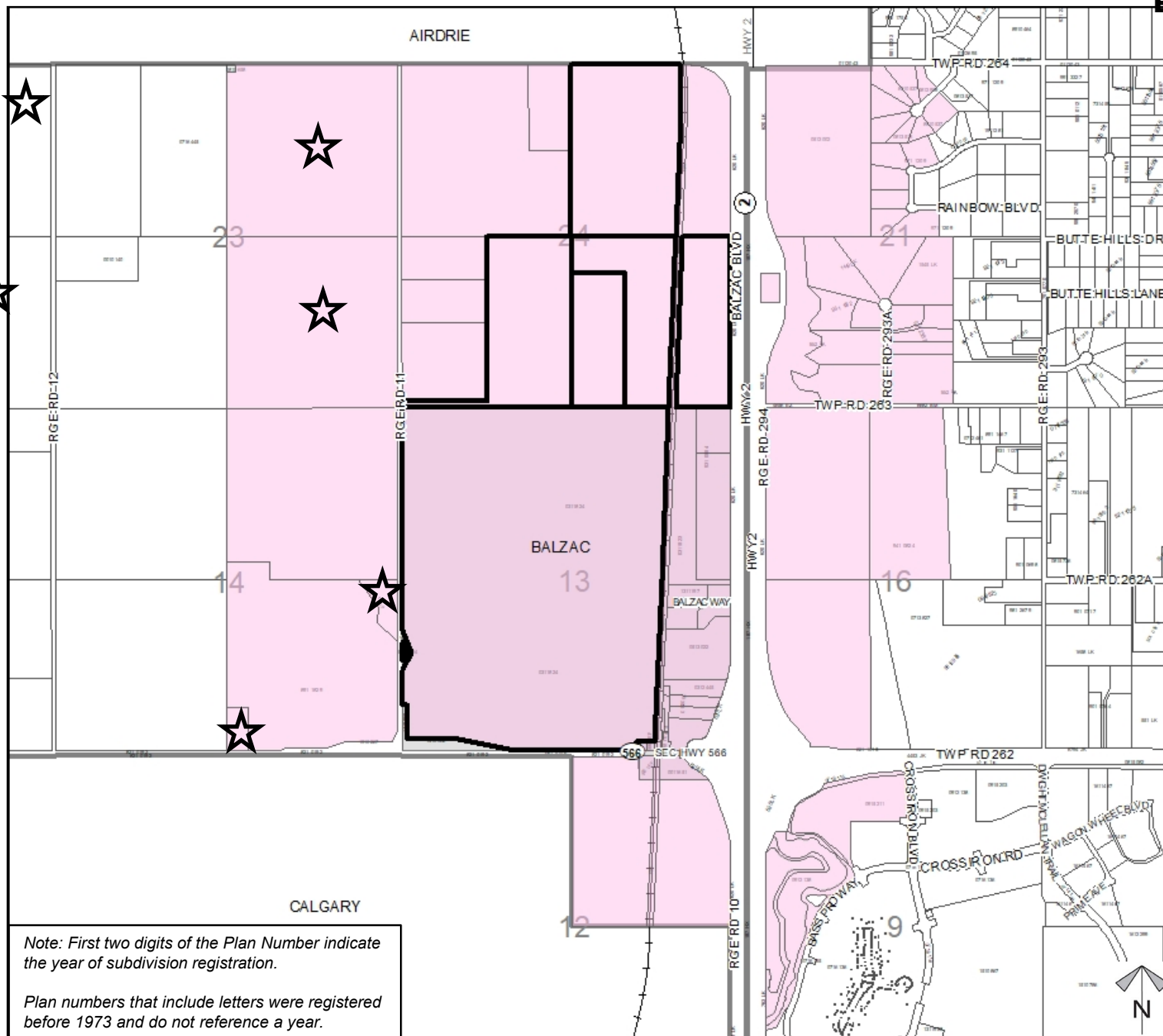


Not Support



Division: 7
 Roll: 06513002/06524002/
 06524007/06524001/
 06524004
 File: PL20200173
 Legal: Lot:1 Block:5
 Plan:0311824; within W-13-
 26-01-W05M, SW/SE/NE-24-
 26-01-W05M

Printed: January 6, 2021



Note: First two digits of the Plan Number indicate the year of subdivision registration.

Plan numbers that include letters were registered before 1973 and do not reference a year.