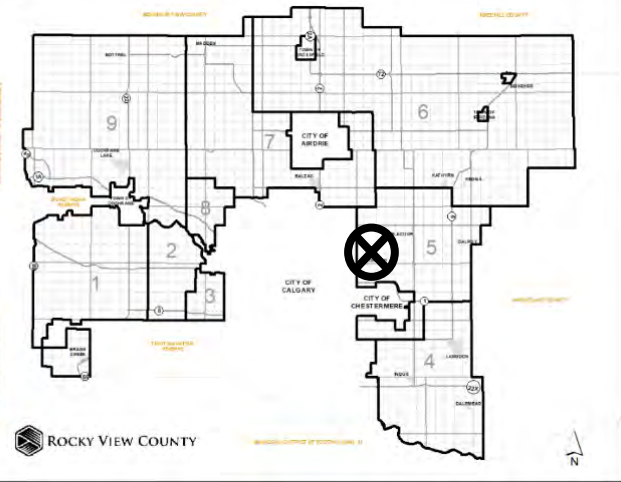


To adopt a conceptual scheme to provide a policy framework to guide future redesignation, subdivision and development proposals within SE-05-25-28-W4M.

Division: 5
Roll: 05305001
File: PL20200139
Printed: October 15, 2020
Legal: SE-05-25-28-W04M



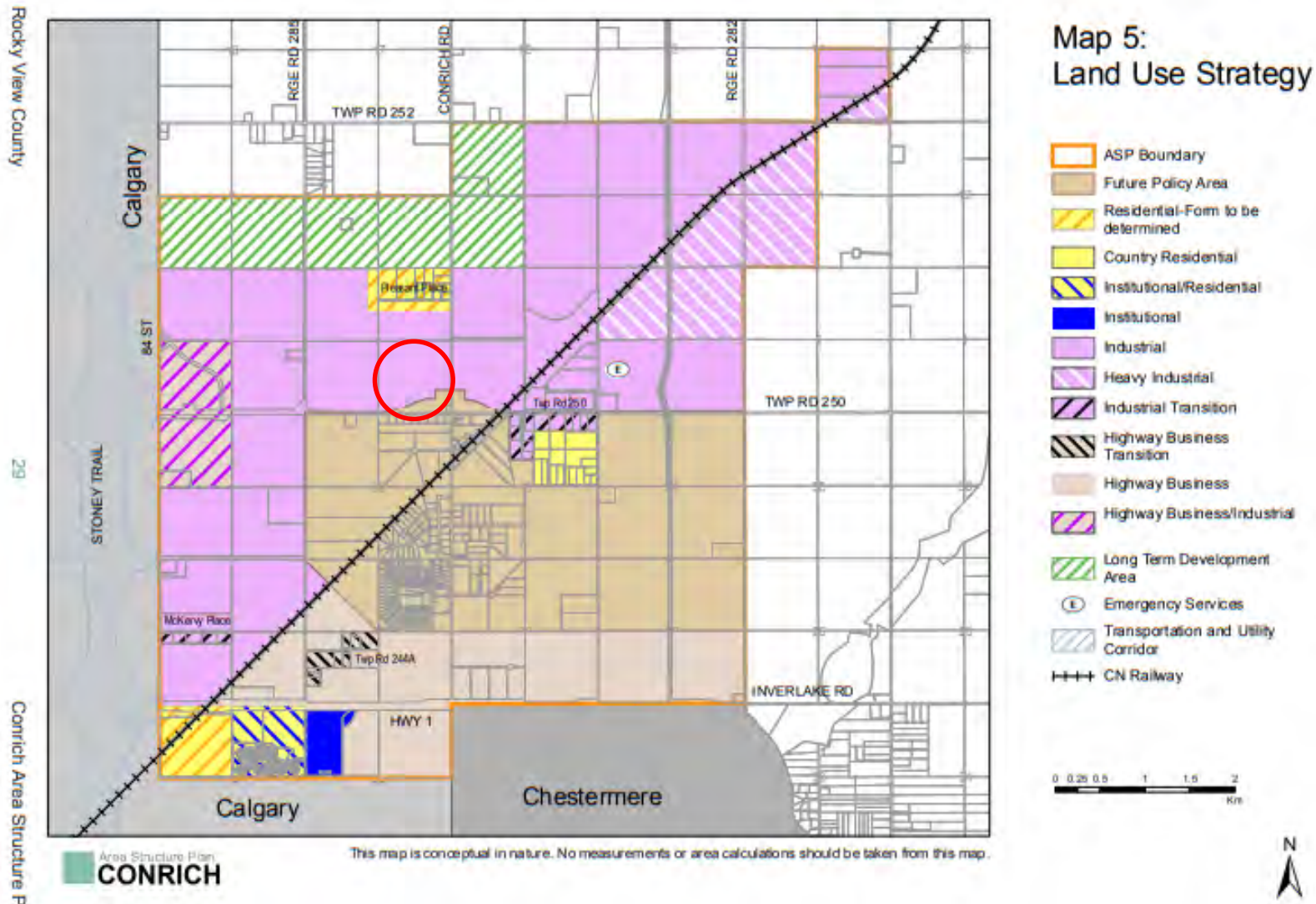
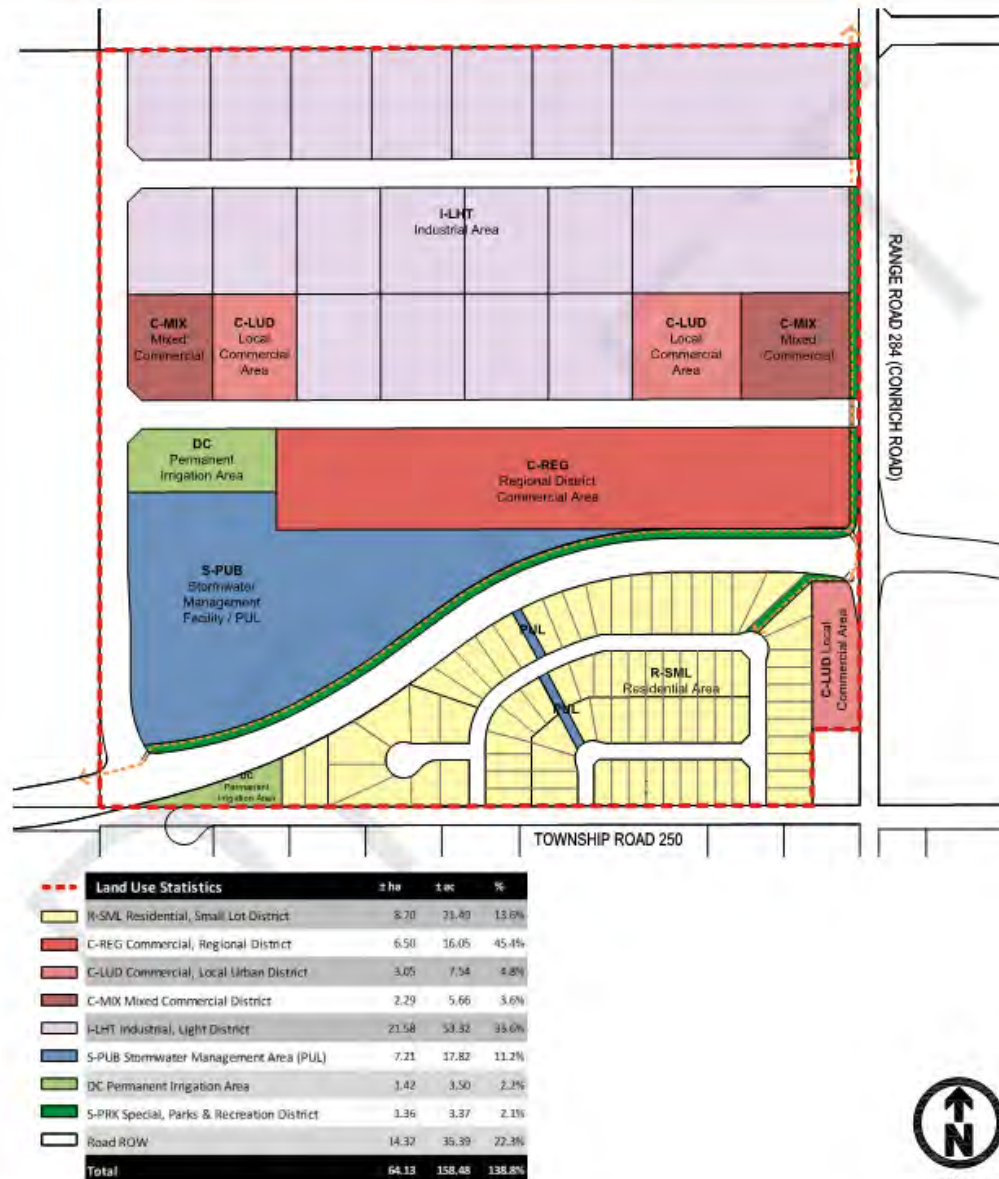


FIGURE 7 | DEVELOPMENT CONCEPT



Conceptual Scheme Proposal:

To adopt the Conrich Crossing Conceptual Scheme to provide a policy framework to guide future redesignation, subdivision and development proposals within SE-05-25-28-W4M in order to accommodate a residential, commercial, and industrial development.

Division: 5
 Roll: 05305001
 File: PL20200139
 Printed: October 15, 2020
 Legal: SE-05-25-28-W04M

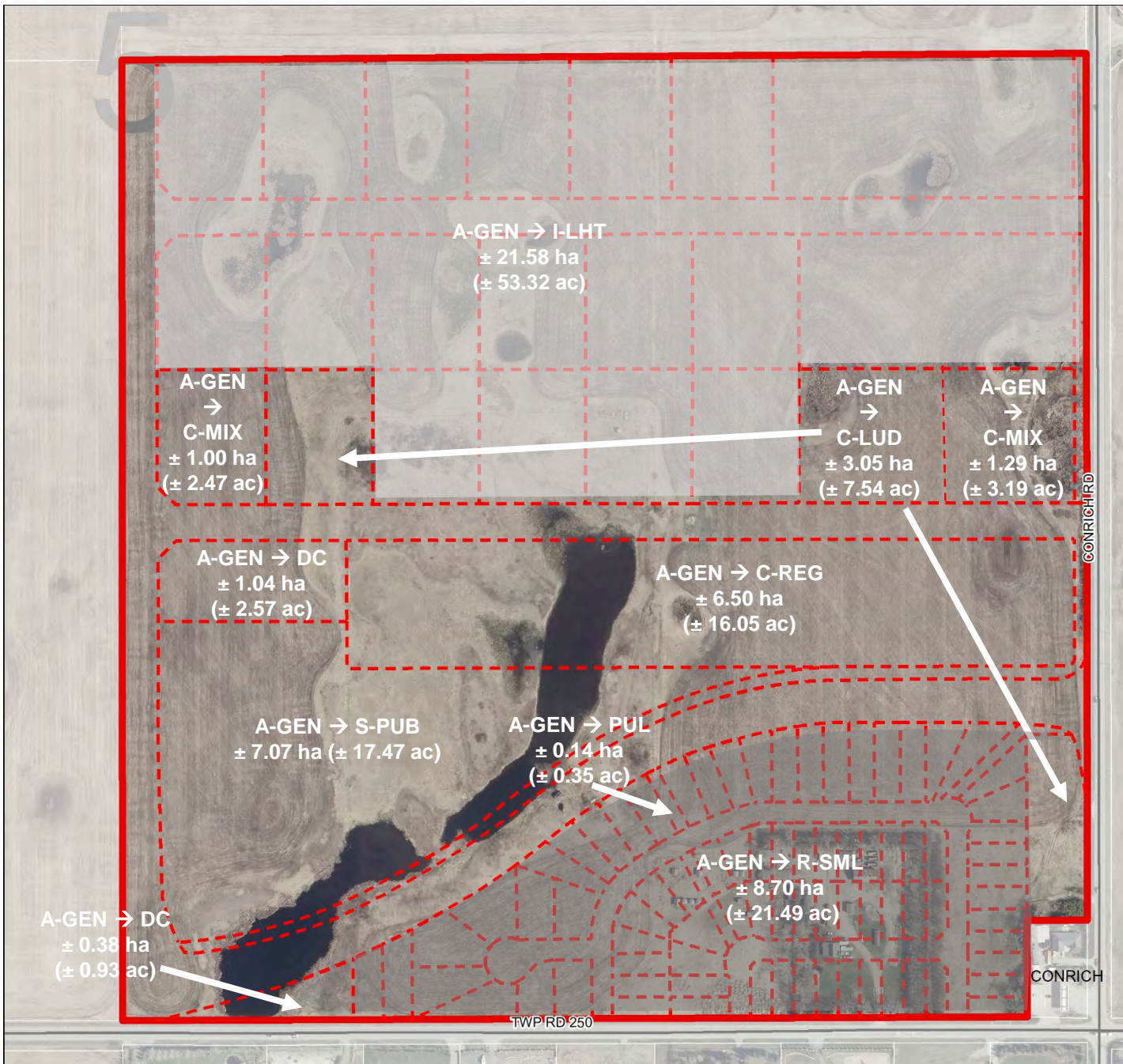
Development Proposal

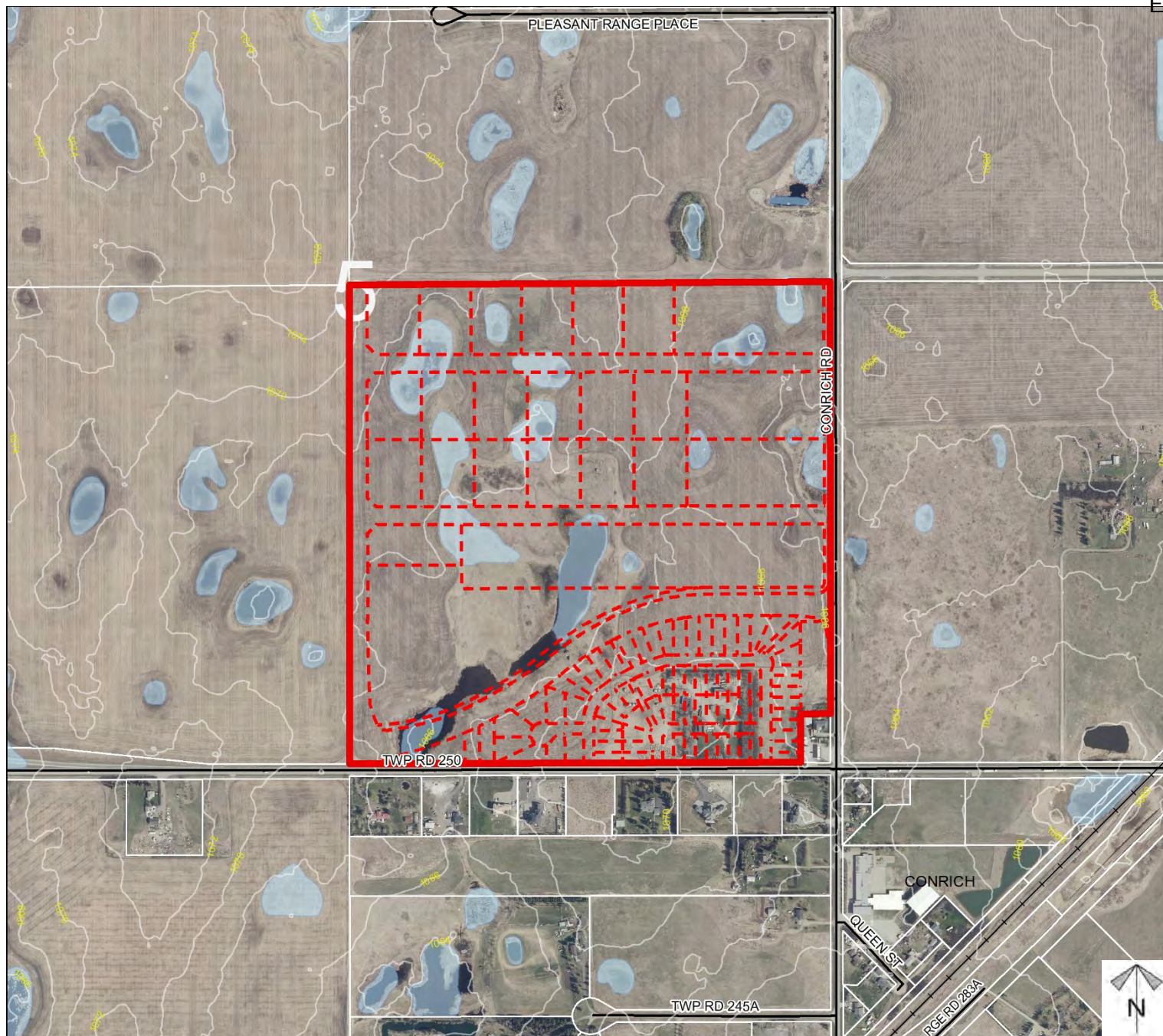
To redesignate the subject lands from Agricultural, General District to:

- Direct Control District – Permanent Irrigation Area (DC)
- Commercial, Local Urban District (C-LUD)
- Commercial, Regional District (C-REG)
- Industrial, Light District (I –LHT)
- Mixed Commercial District (C-MIX)
- Residential, Small Lot District (R-SML)
- Special, Parks & Recreation District (S-PRK)
- Stormwater Management Area (PUL)

To accommodate a residential, commercial, and industrial development.

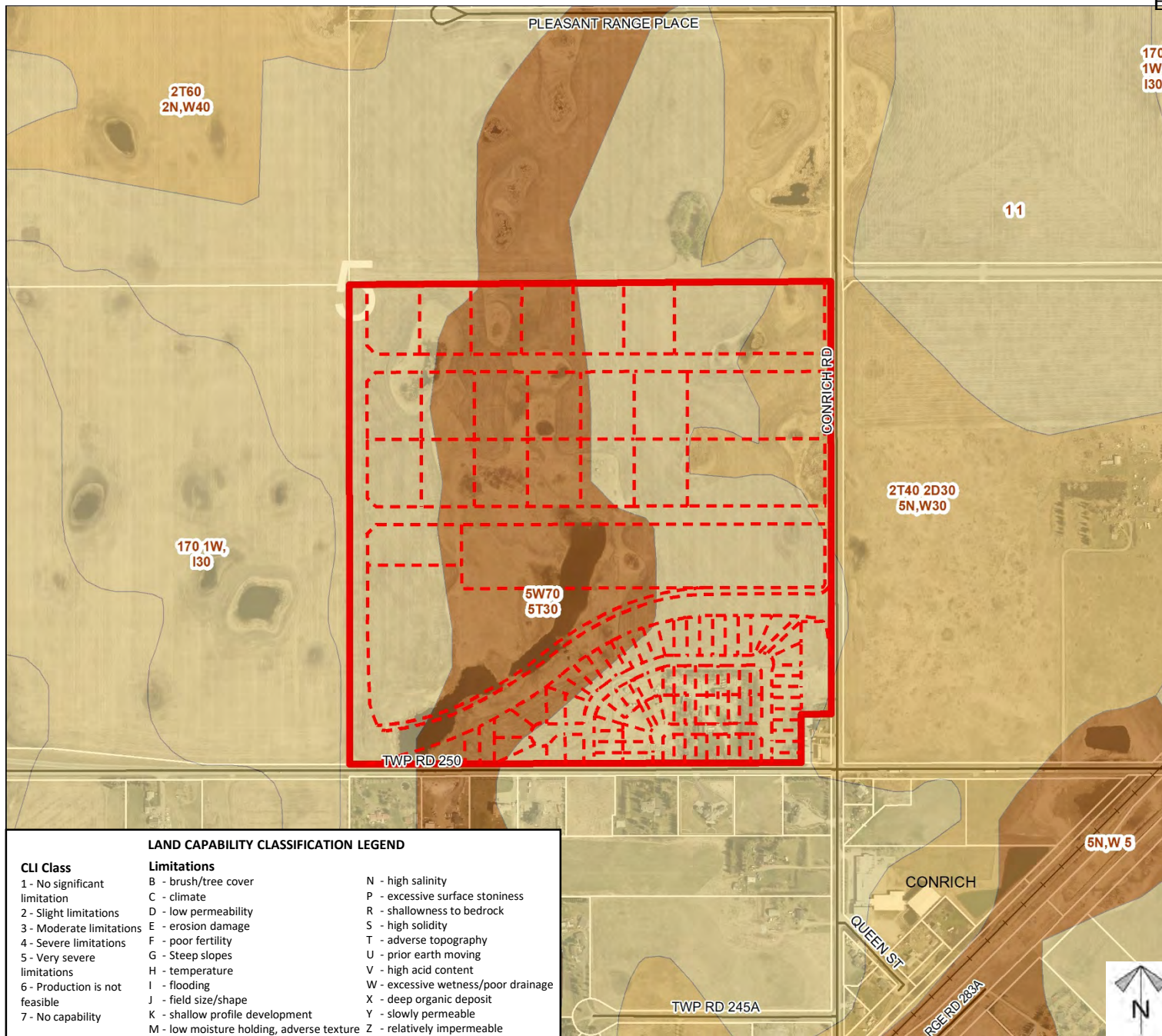
Division: 5
Roll: 05305001
File: PL20200139
Printed: October 15, 2020
Legal: SE-05-25-28-W04M



Environmental

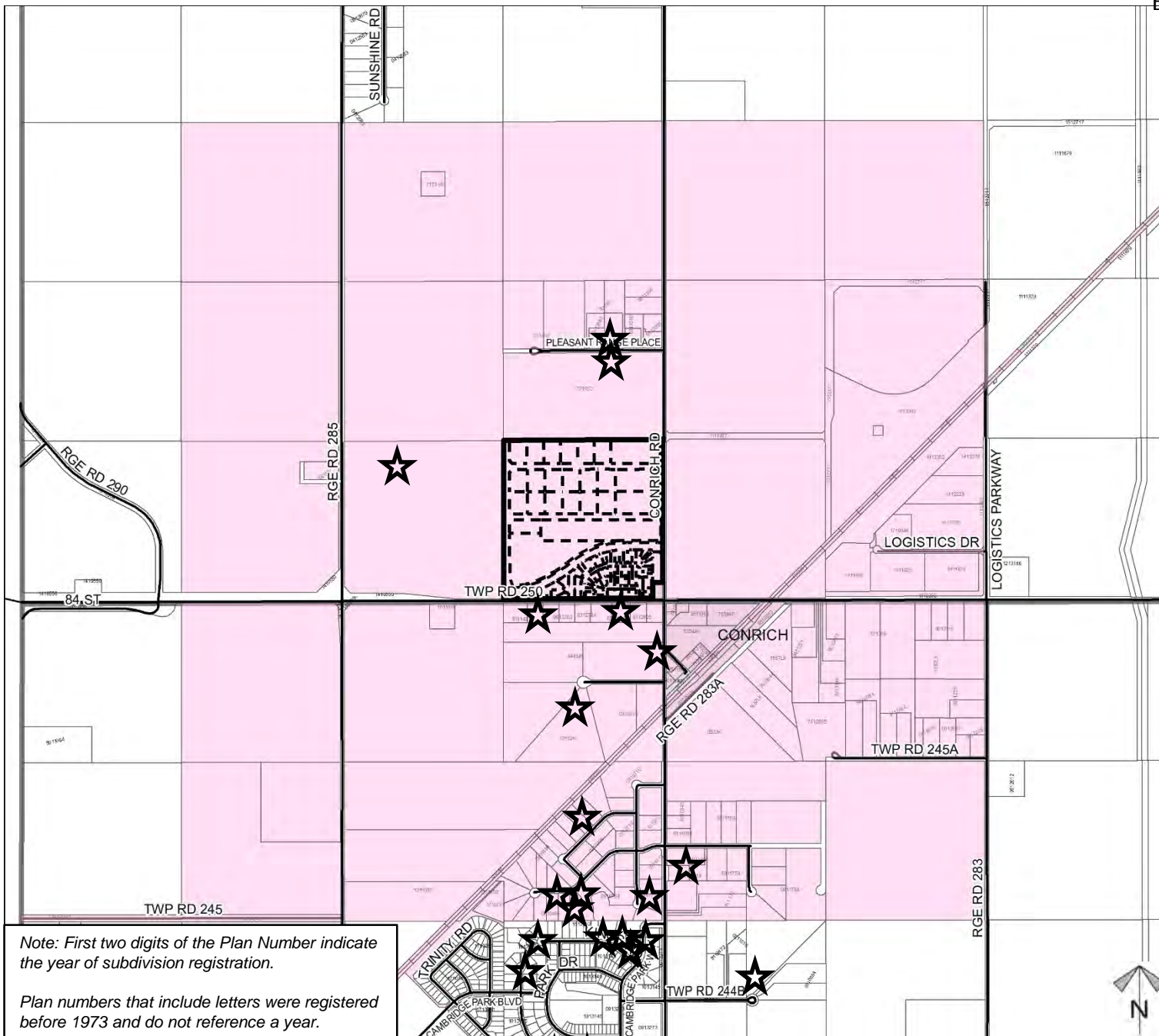
Division: 5
Roll: 05305001
File: PL20200139
Printed: October 15, 2020
Legal: SE-05-25-28-W04M

Soil Classifications



Division: 5
 Roll: 05305001
 File: PL20200139
 Printed: October 15, 2020
 Legal: SE-05-25-28-W04M

Landowner Circulation Area



Note: First two digits of the Plan Number indicate the year of subdivision registration.

Plan numbers that include letters were registered before 1973 and do not reference a year.

Legend

Support



Opposition



Division: 5
Roll: 05305001
File: PL20200139
Printed: October 15, 2020
Legal: SE-05-25-28-W04M