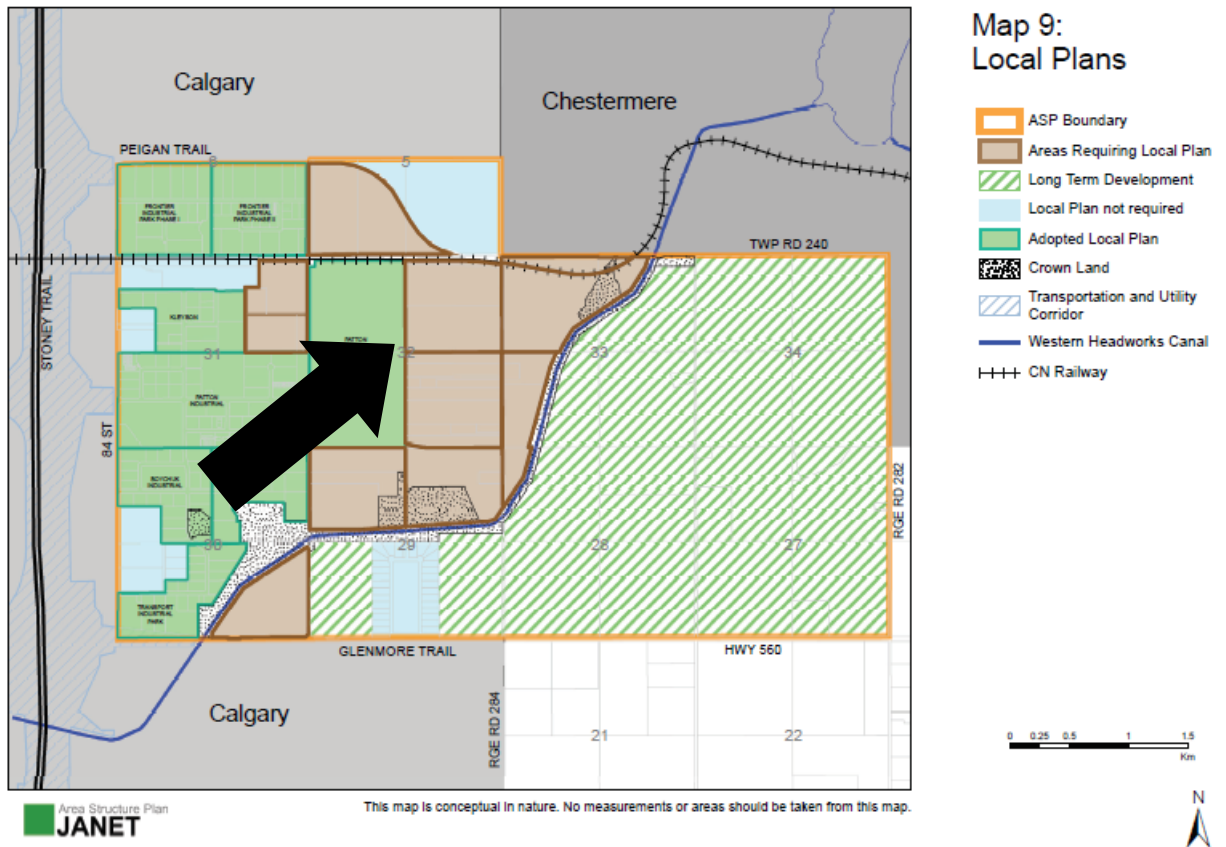




Date: October 16, 2019 Division # 5 File: 03332011

Janet Area Structure Plan: Local Plan Requirements



REQUIRED LOCAL PLAN BOUNDARIES

SE-32-23-28-W04M

Lot:1 Block:2 Plan:9210992

Date: October 16, 2019

Division # 5

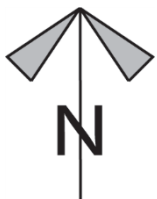
File: 03332011

MSDP Proposal: To adopt the Schlichenmayer Proposal Master Site Development Report to provide for RV storage and industrial uses on the site.

Figure 6: Rendering of Proposed RV Storage and Warehouse



MSDP PROPOSAL



SE-32-23-28-W04M
Lot:1 Block:2 Plan:9210992

Date: October 16, 2019 Division # 5 File: 03332011

Development Proposal: To redesignate the subject lands from Rural Residential District to Light Industrial District to accommodate RV storage and industrial uses.

R-RUR → I-LHT
± 4.19 ha
(± 10.35 ac)

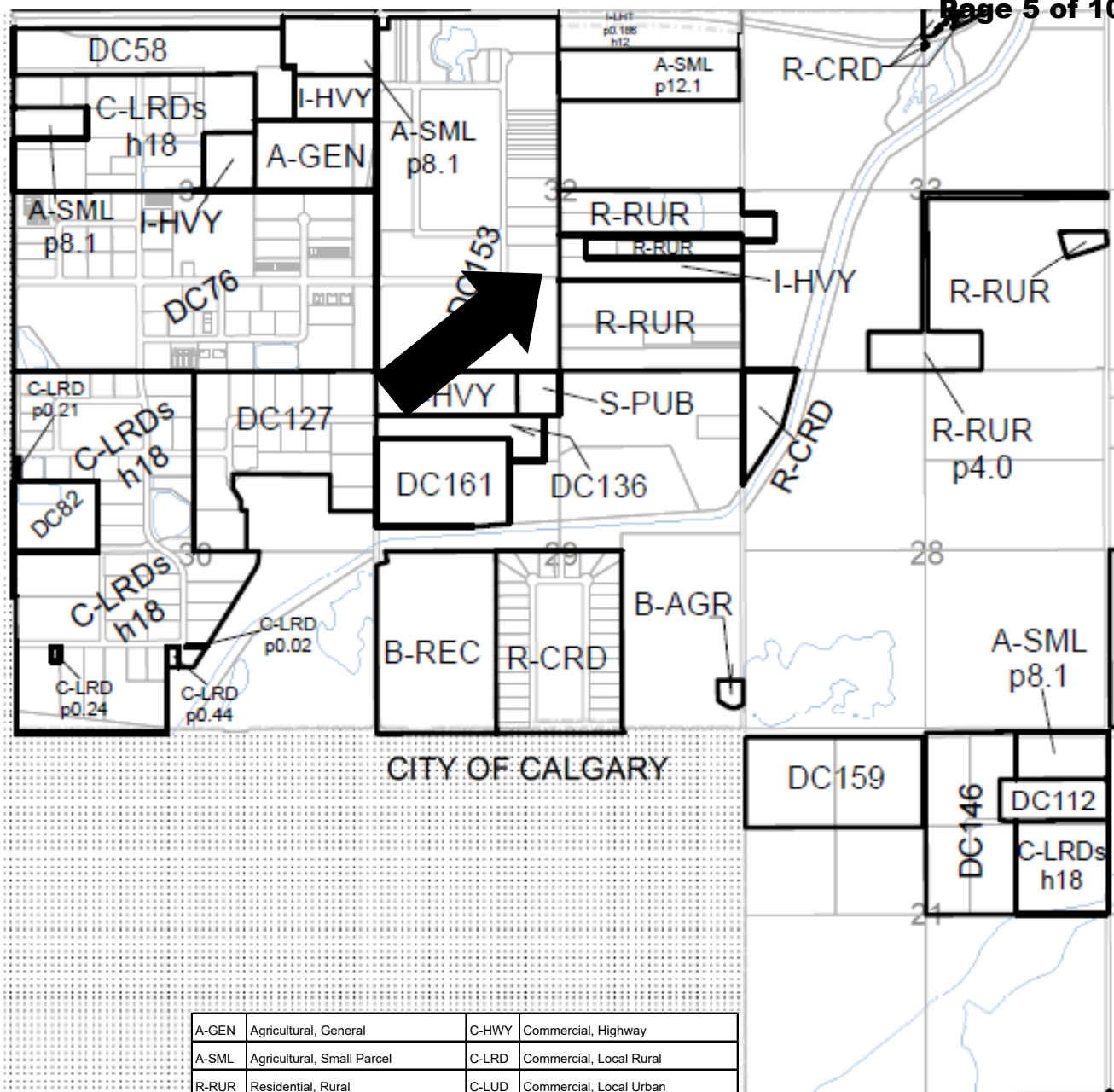
RGE-RD-284

DEVELOPMENT PROPOSAL

**SE-32-23-28-W04M****Lot:1 Block:2 Plan:9210992**Date: October 16, 2019

Division # 5

File: 03332011



A-GEN	Agricultural, General	C-HWY	Commercial, Highway
A-SML	Agricultural, Small Parcel	C-LRD	Commercial, Local Rural
R-RUR	Residential, Rural	C-LUD	Commercial, Local Urban
R-CRD	Residential, Country Residential	C-MIX	Commercial, Mixed Urban
R-URB	Residential, Urban	C-REG	Commercial, Regional
R-SML	Residential, Small Lot Urban	I-LHT	Industrial, Light
R-MID	Residential, Mid-Density Urban	I-HVY	Industrial, Heavy
R-MRU	Residential, Multi-Residential Urban	S-PUB	Special, Public Service
B-AGR	Business, Agricultural	S-FUD	Special, Future Urban Development
B-REC	Business, Recreation	S-PRK	Special, Parks and Recreation
B-REG	Business, Regional Campus	S-NOS	Special, Natural Open Space
B-LOC	Business, Local Campus	S-NAT	Special, Natural Resource
B-LWK	Business, Live-Work		

LAND USE MAP

SE-32-23-28-W04M

Lot:1 Block:2 Plan:9210992

Date: October 16, 2019Division # 5File: 03332011



Contours are generated using 10m grid points, and depict general topographic features of the area. Detail accuracy at a local scale cannot be guaranteed. They are included for reference use only.

TOPOGRAPHY

Contour Interval 2 M

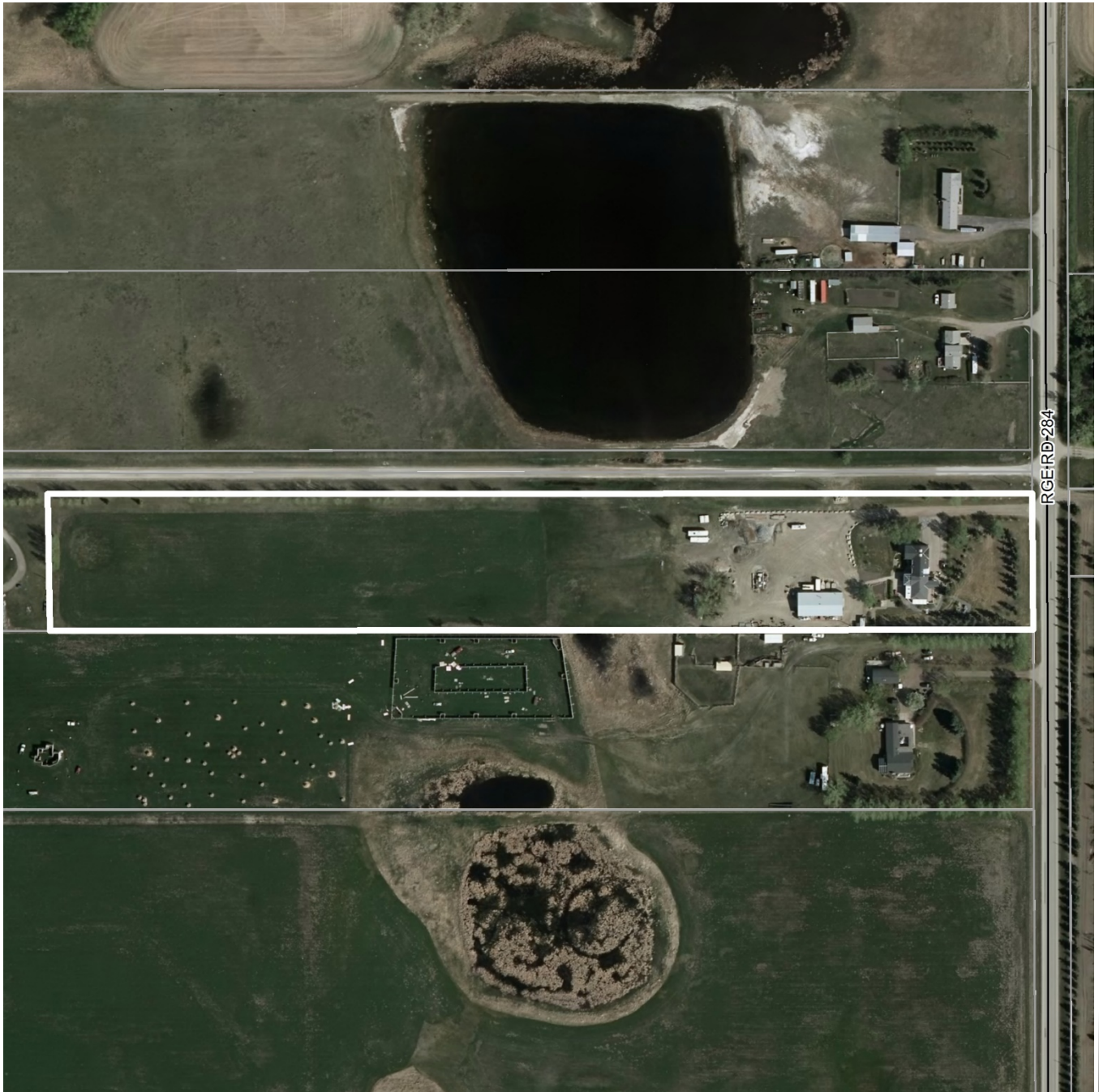


SE-32-23-28-W04M
Lot:1 Block:2 Plan:9210992

Date: October 16, 2019

Division # 5

File: 03332011



Note: Post processing of raw aerial photography may cause varying degrees of visual distortion at the local level.

AIR PHOTO

Spring 2018

SE-32-23-28-W04M

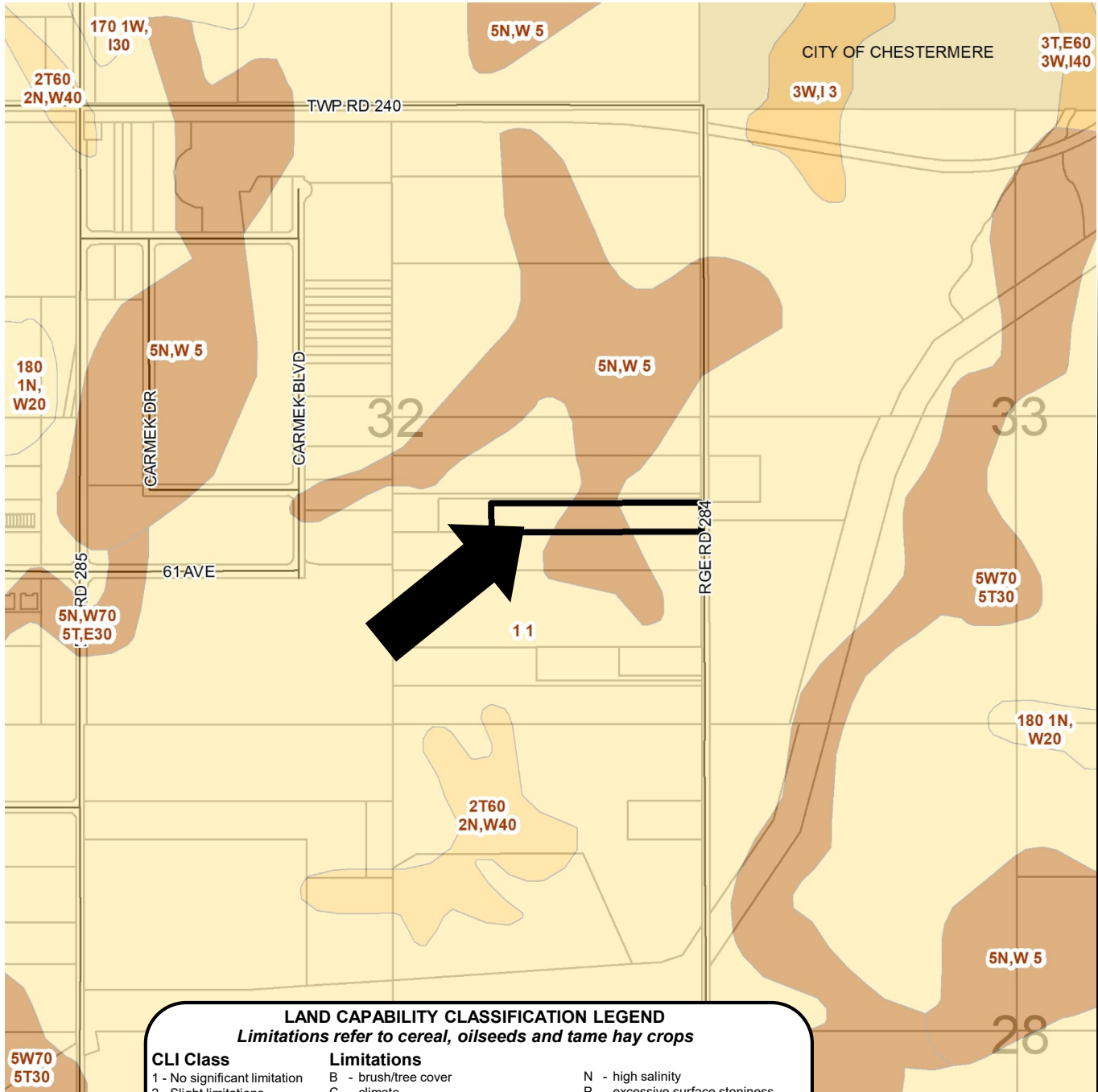
Lot:1 Block:2 Plan:9210992

Date: October 16, 2019

Division # 5

File: 03332011





LAND CAPABILITY CLASSIFICATION LEGEND
Limitations refer to cereal, oilseeds and tame hay crops

CLI Class

- 1 - No significant limitation
- 2 - Slight limitations
- 3 - Moderate limitations
- 4 - Severe limitations
- 5 - Very severe limitations
- 6 - Production is not feasible
- 7 - No capability

Limitations

- B - brush/tree cover
- C - climate
- D - low permeability
- E - erosion damage
- F - poor fertility
- G - Steep slopes
- H - temperature
- I - flooding
- J - field size/shape
- K - shallow profile development
- M - low moisture holding, adverse texture
- N - high salinity
- P - excessive surface stoniness
- R - shallowness to bedrock
- S - high sodicity
- T - adverse topography
- U - prior earth moving
- V - high acid content
- W - excessive wetness/poor drainage
- X - deep organic deposit
- Y - slowly permeable
- Z - relatively impermeable

SOIL MAP

SE-32-23-28-W04M

Lot:1 Block:2 Plan:9210992

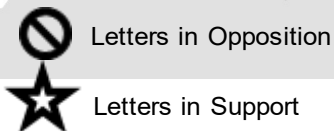
Date: October 16, 2019

Division # 5

File: 03332011

File: 03332011

CITY OF CHESTERMERE



10

Subject Lands

Date: October 16, 2019 **Division #** 5 **File:** 03332011

