

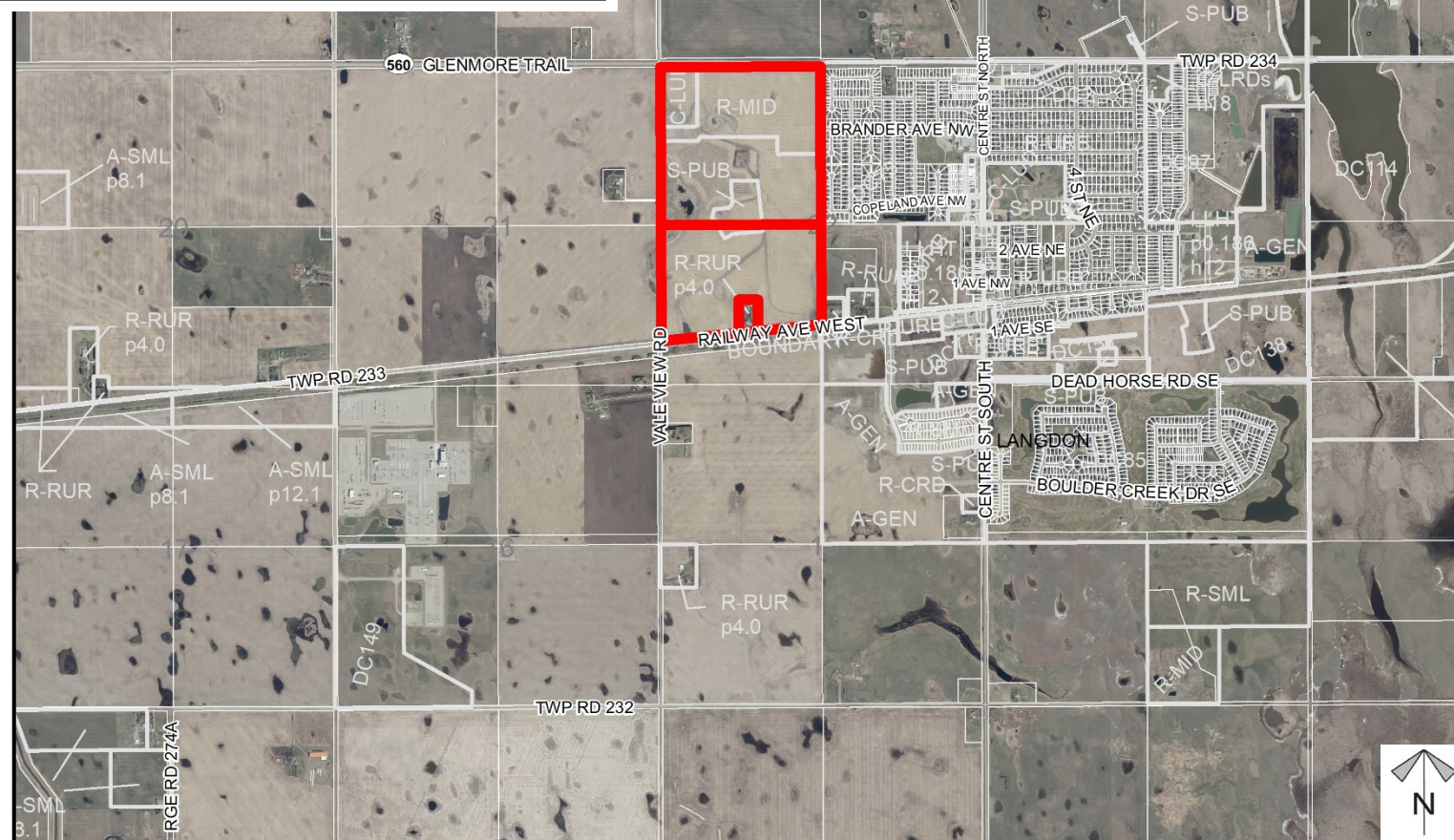
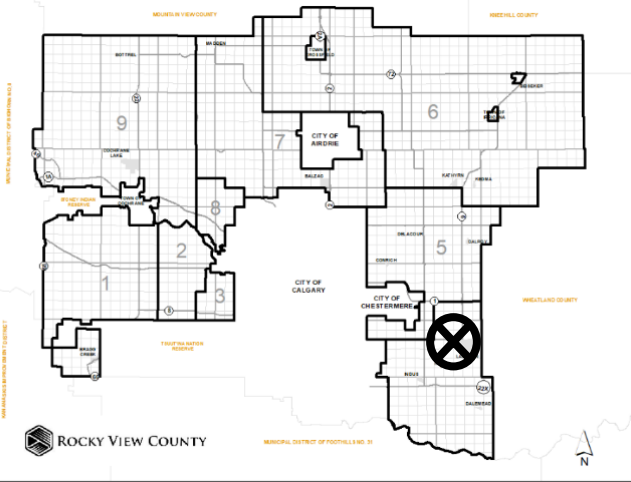


Location & Context

Redesignation Proposal

To redesignate the remainder lands from Agricultural, General District (A-GEN) and Residential, Rural District (R-RUR) to Residential, Mid-Density Urban District (R-MID), Special, Parks and Recreation District (S-PRK), Special, Natural Open Space District (S-NOS), and Special, Public Service District (S-PUB), in order to facilitate future phases of Painted Sky Development.

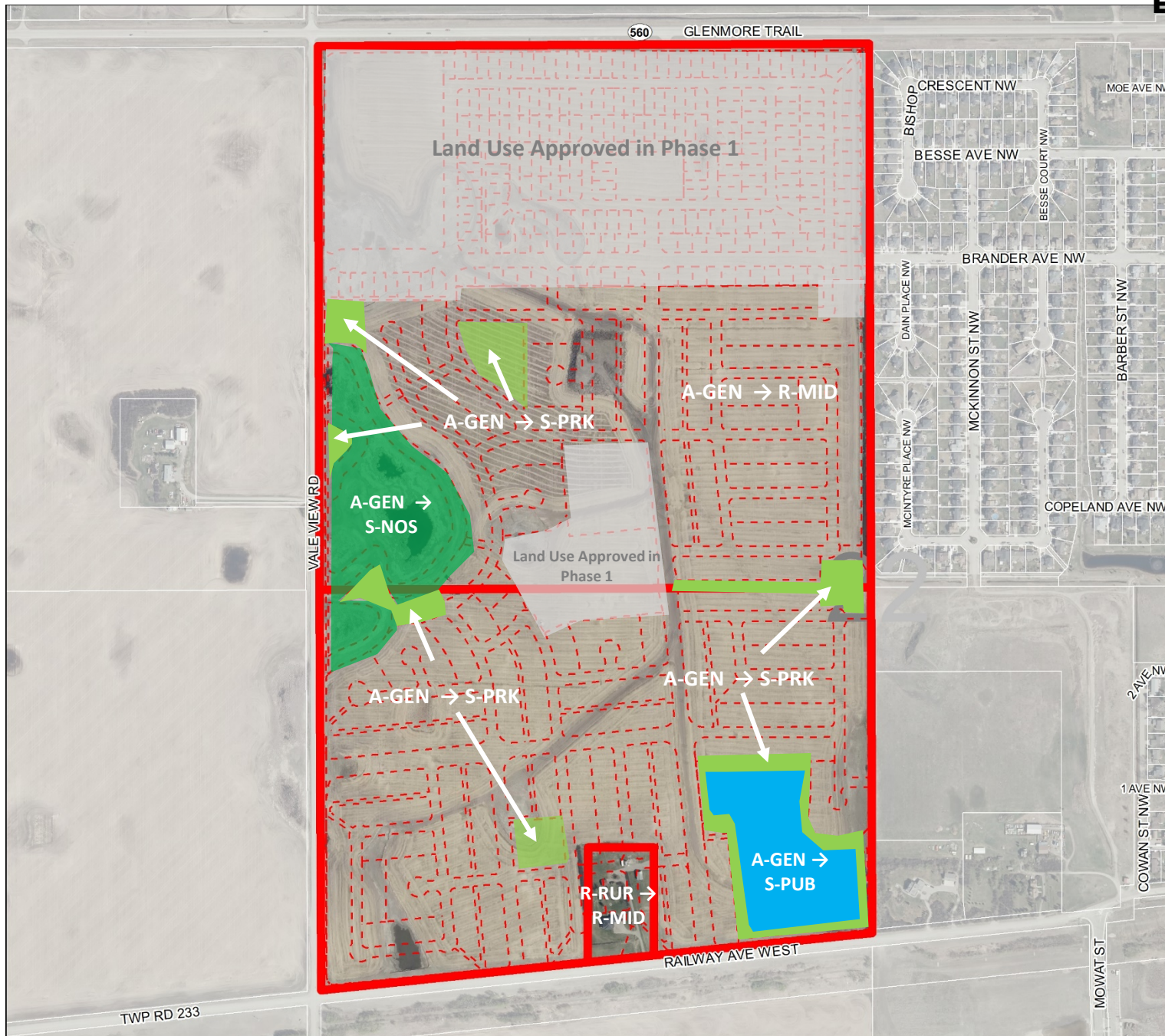
Division: 4
Roll: 03222002/03/91
File: PL20210007
Legal: A Portion of NW 22-23-27-W4M & SW 22-23-27-W4M
Printed: Jan 20, 2021



Redesignation Proposal

To redesignate the remainder lands from Agricultural, General District (A-GEN) and Residential, Rural District (R-RUR) to Residential, Mid-Density Urban District (R-MID), Special, Parks and Recreation District (S-PRK), Special, Natural Open Space District (S-NOS), and Special, Public Service District (S-PUB), in order to facilitate future phases of Painted Sky Development.

Printed: Jan 20, 2021










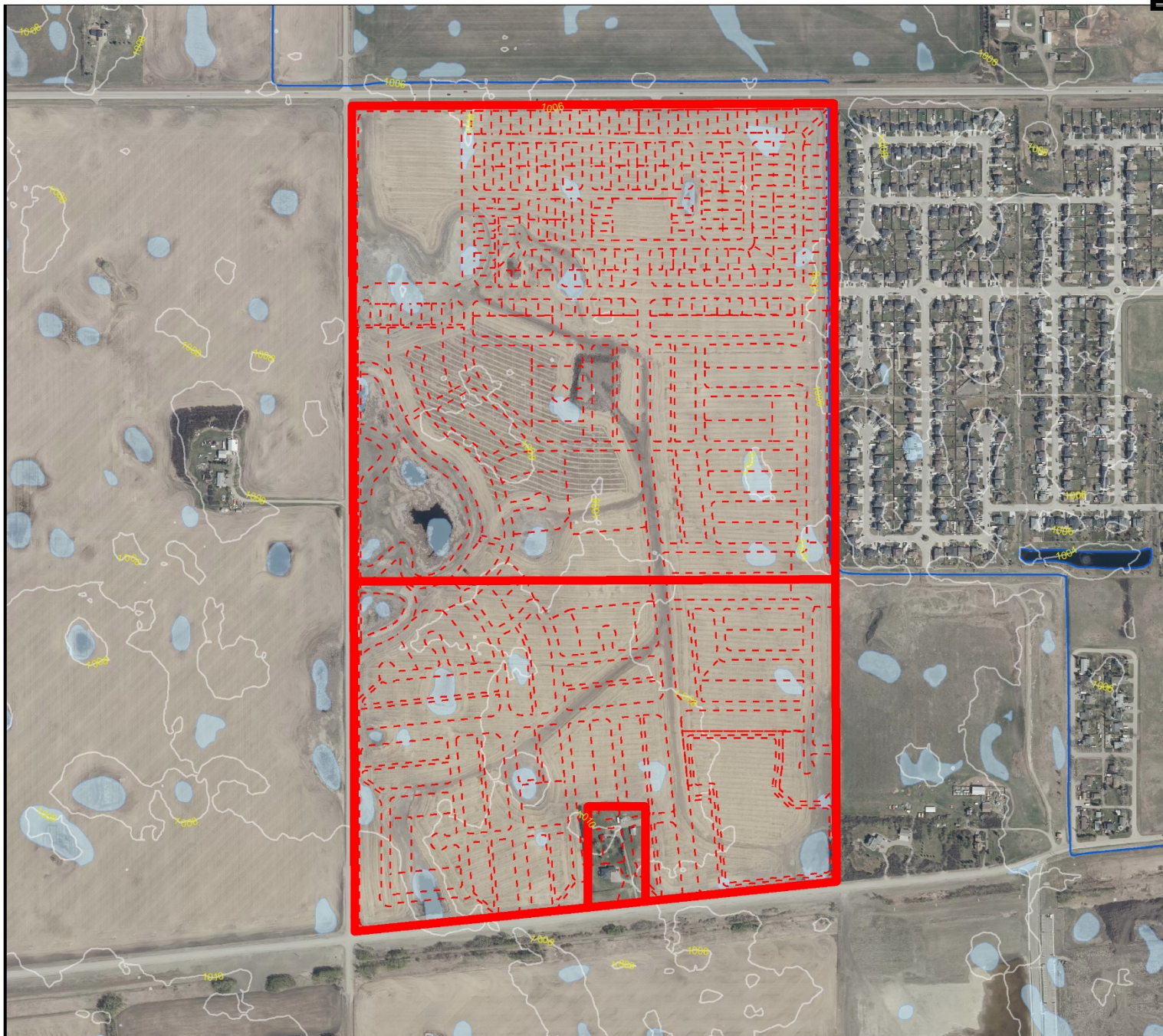
Environmental

Redesignation Proposal

To redesignate the remainder lands from Agricultural, General District (A-GEN) and Residential, Rural District (R-RUR) to Residential, Mid-Density Urban District (R-MID), Special, Parks and Recreation District (S-PRK), Special, Natural Open Space District (S-NOS), and Special, Public Service District (S-PUB), in order to facilitate future phases of Painted Sky.

-  Subject Lands
-  Contour - 2 meters
-  Riparian Setbacks
-  Alberta Wetland Inventory
-  Surface Water

Division: 4
 Roll: 03222002/03/91
 File: PL20210007
 Legal: A Portion of NW 22-
 23-27-W4M & SW 22-23-27-
 W4M
 Printed: Jan 20, 2021

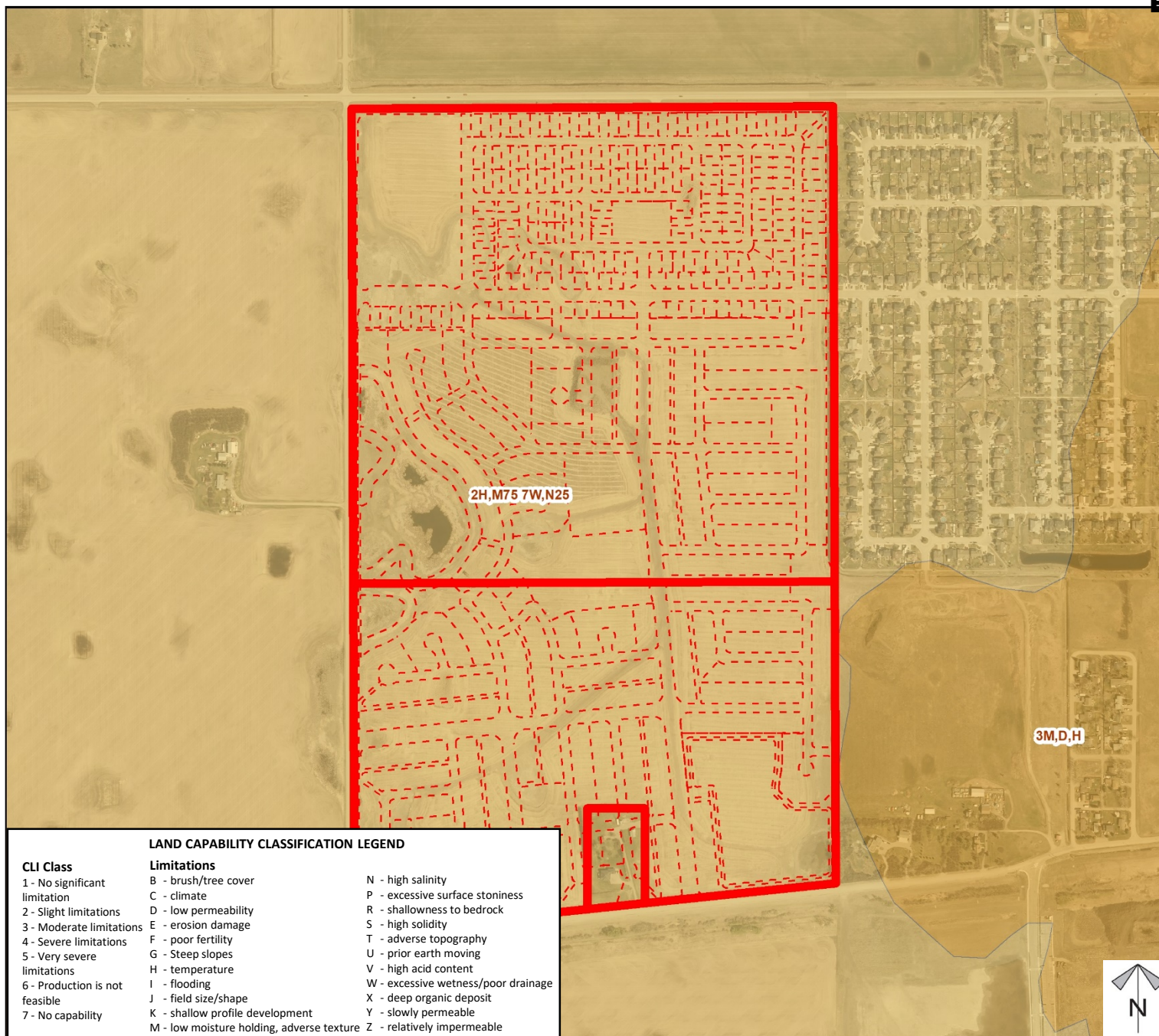




Soil Classifications

Redesignation Proposal

To redesignate the remainder lands from Agricultural, General District (A-GEN) and Residential, Rural District (R-RUR) to Residential, Mid-Density Urban District (R-MID), Special, Parks and Recreation District (S-PRK), Special, Natural Open Space District (S-NOS), and Special, Public Service District (S-PUB), in order to facilitate future phases of Painted Sky Development.



LAND CAPABILITY CLASSIFICATION LEGEND

CLI Class

- 1 - No significant limitation
- 2 - Slight limitations
- 3 - Moderate limitations
- 4 - Severe limitations
- 5 - Very severe limitations
- 6 - Production is not feasible
- 7 - No capability

Limitations

- B - brush/tree cover
- C - climate
- D - low permeability
- E - erosion damage
- F - poor fertility
- G - Steep slopes
- H - temperature
- I - flooding
- J - field size/shape
- K - shallow profile development
- M - low moisture holding, adverse texture
- N - high salinity
- P - excessive surface stoniness
- R - shallowness to bedrock
- S - high solidity
- T - adverse topography
- U - prior earth moving
- V - high acid content
- W - excessive wetness/poor drainage
- X - deep organic deposit
- Y - slowly permeable
- Z - relatively impermeable

Division: 4

Roll: 03222002/03/91

File: PL20210007

Legal: A Portion of NW 22-23-27-W4M & SW 22-23-27-W4M

Printed: Jan 20, 2021

Redesignation Proposal

Legend

Support (1)



Not Support



Division: 4

Roll: 03222002/03/91

File: PL20210007

Legal: A Portion of NW 22-23-27-W4M & SW 22-23-27-W4M

Printed: Jan 20, 2021

