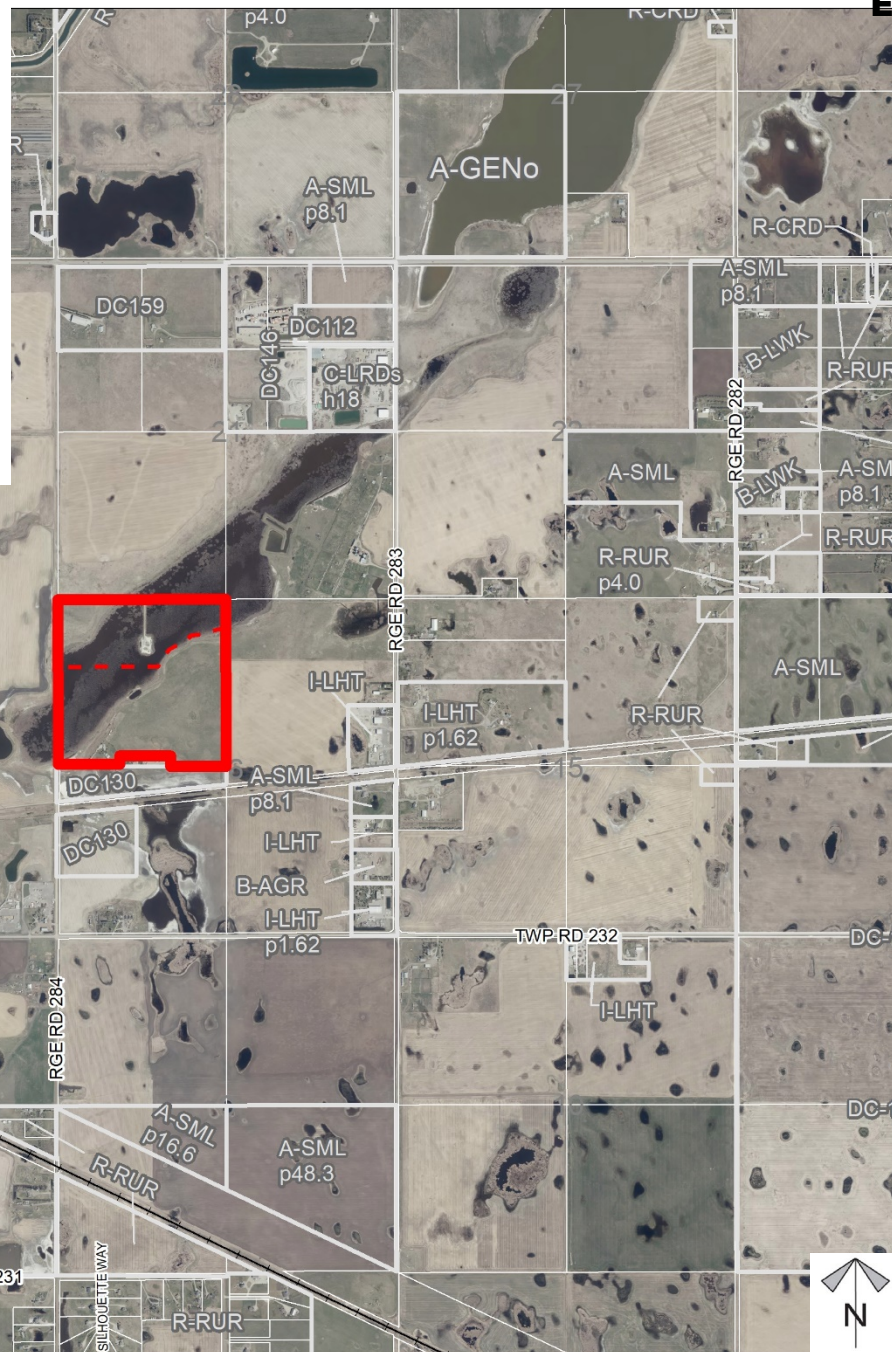
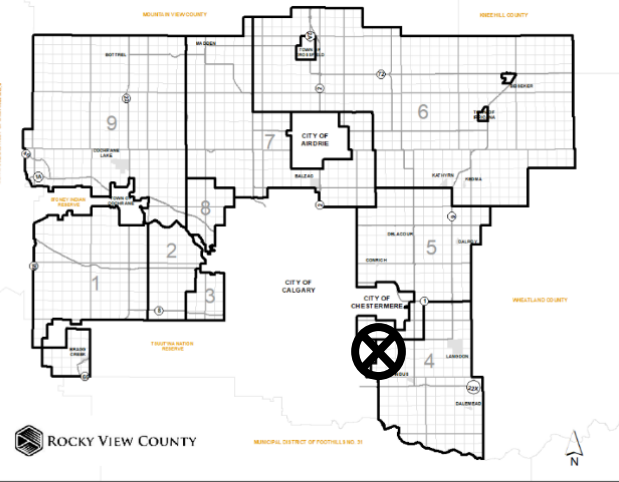


Redesignation Proposal

To redesignate a portion of land from Agricultural, General District (A-GEN) to Agricultural, Small Parcel District (A-SML), in order to facilitate the creation of ± 54 acre parcel with a 102 acre remainder.

Division: 04
Roll: 03316010
File: PL20210022
Legal: A portion of NW-16-
23-28-W04M

Printed: Feb 8, 2021





Development Proposal

Redesignation Proposal

To redesignate a portion of land from Agricultural, General District (A-GEN) to Agricultural, Small Parcel District (A-SML), in order to facilitate the creation of ± 54 acre parcel with a 102 acre remainder.

A-GEN \rightarrow A-SML
 ± 21.86 ha (± 54.00 ac)

A-GEN Remainder
 ± 41.28 ha (± 102.00 ac)

CALGARY

Division: 04
Roll: 03316010
File: PL20210022
Legal: A portion of NW-16-23-28-W04M

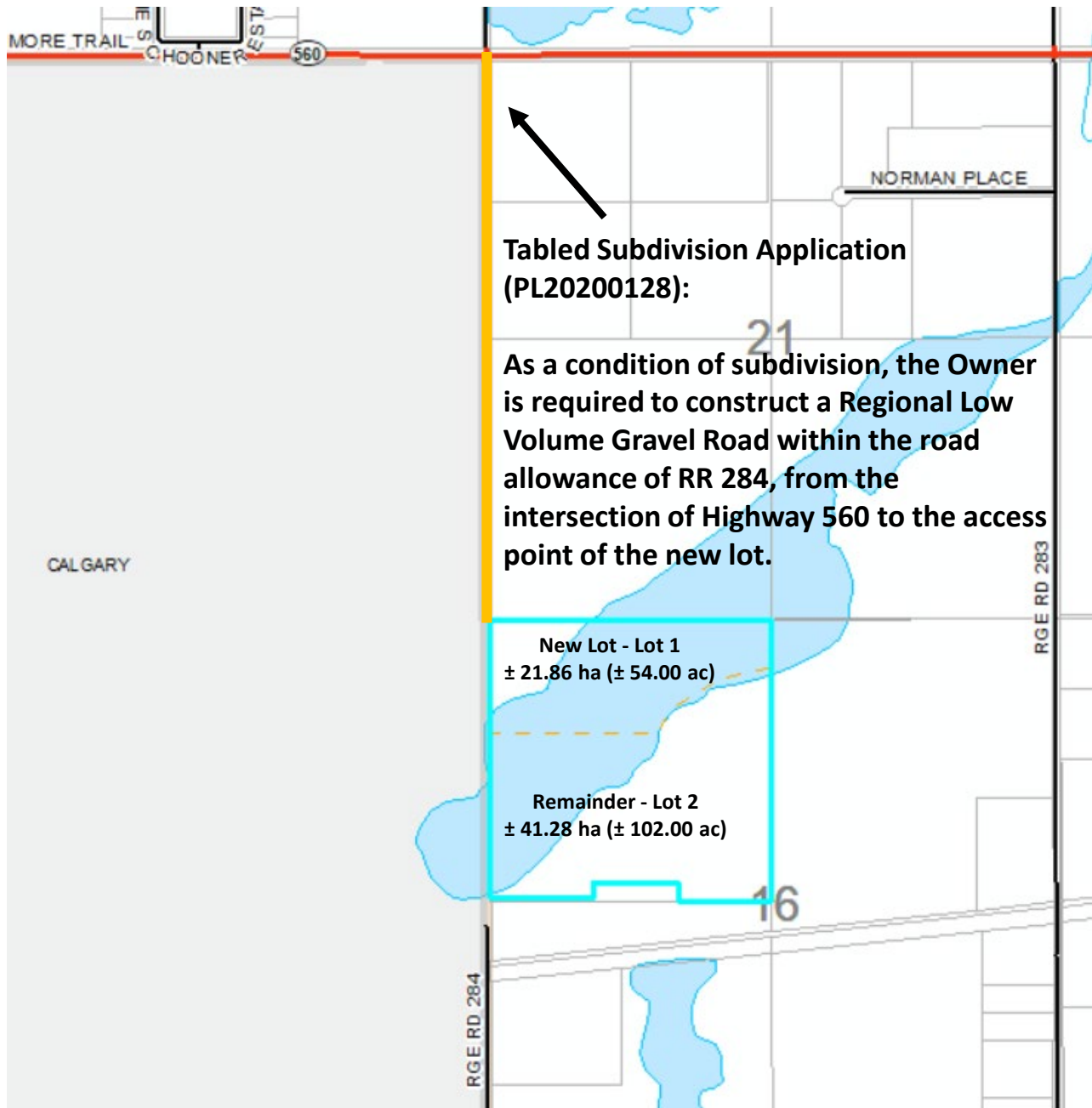
Printed: Feb 8, 2021



Tabled Subdivision Application

Redesignation Proposal

To redesignate a portion of land from Agricultural, General District (A-GEN) to Agricultural, Small Parcel District (A-SML), in order to facilitate the creation of ± 54 acre parcel with a 102 acre remainder.



Division: 04
Roll: 03316010
File: PL20210022
Legal: A portion of NW-16-23-28-W04M

Printed: Feb 8, 2021

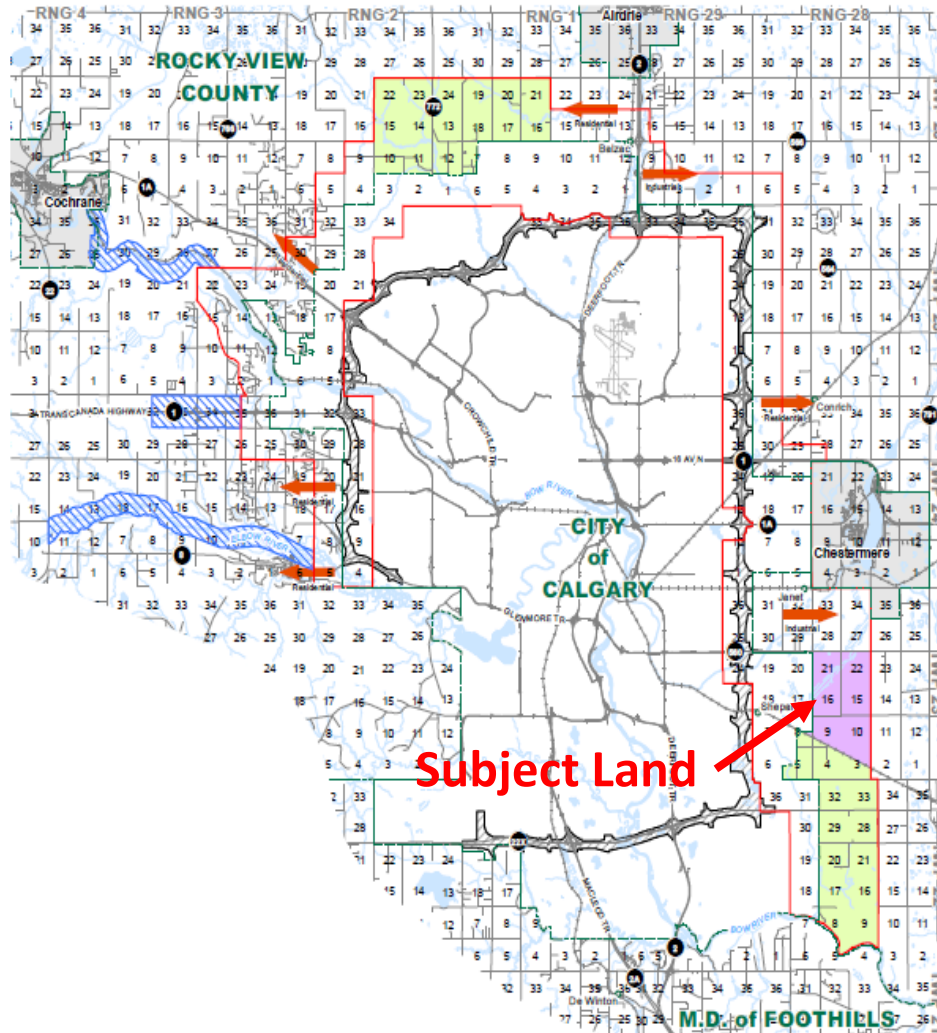
MAP 4

GROWTH CORRIDORS/AREAS

Legend

- Policy Area
- ▨ Notification Zone
- ▨ Policy Review Area
- ▨ Transportation/ Utility Corridor
- Jurisdictional Boundaries
- Highway #
- ▨ Rocky View County Growth Corridors
- ▨ Identified City of Calgary Growth Areas
- ▨ Industrial
- ▨ Residential

0 1 2 3 4 5 6 7 8 9 10
Kilometres



Amended:
Calgary Bylaw: 24P2012
Rocky View Bylaw: C-7197-2012

Approved:
Calgary Bylaw: 14P2011
Rocky View Bylaw: C-7078-2011

This map is conceptual only. No measurements of distances or areas should be taken from this map.

Redesignation Proposal

To redesignate a portion of land from Agricultural, General District (A-GEN) to Agricultural, Small Parcel District (A-SML), in order to facilitate the creation of ± 54 acre parcel with a 102 acre remainder.

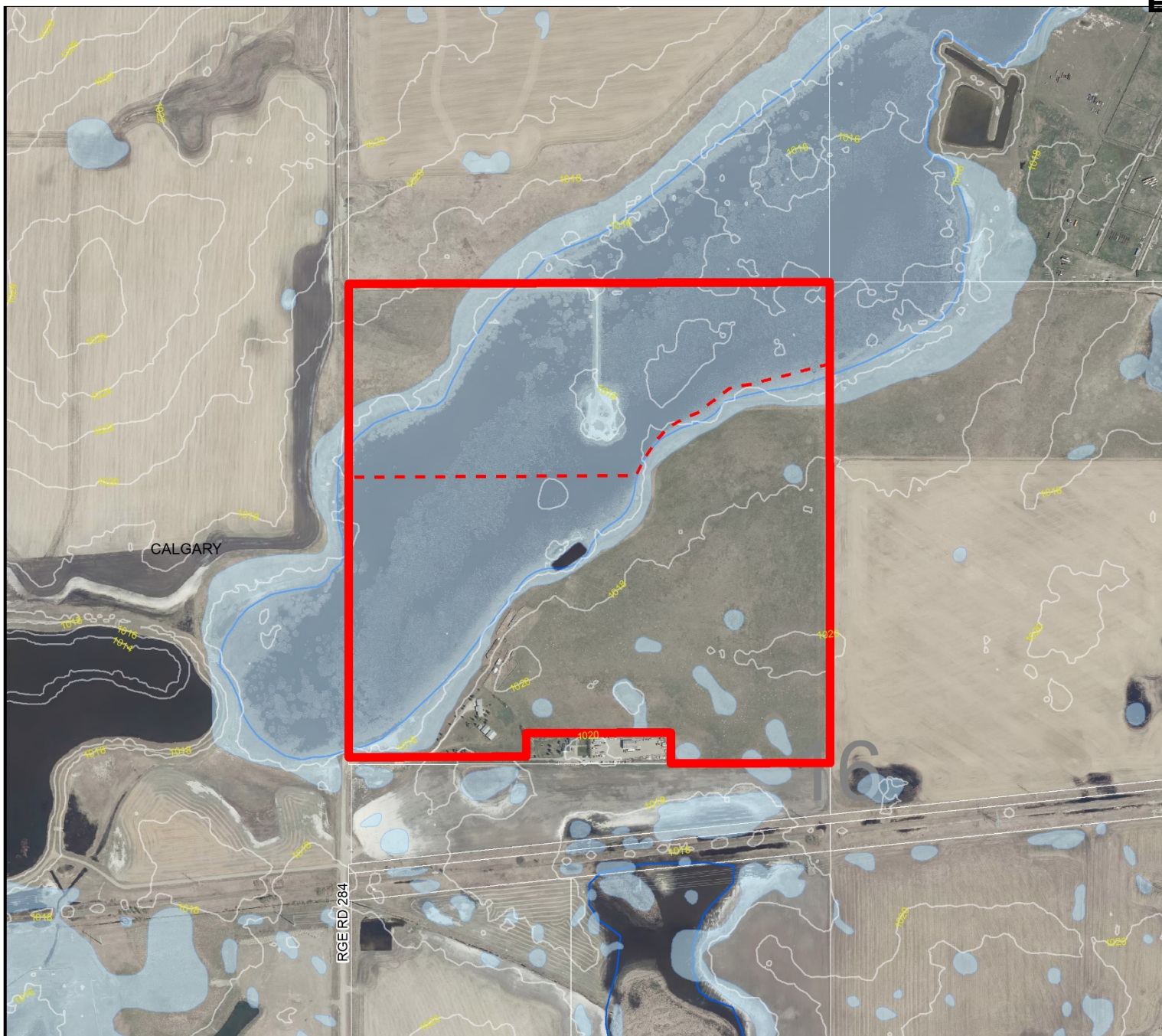
Division: 04
Roll: 03316010
File: PL20210022
Legal: A portion of NW-16-23-28-W04M

Printed: Feb 8, 2021

Environmental

Redesignation Proposal

To redesignate a portion of land from Agricultural, General District (A-GEN) to Agricultural, Small Parcel District (A-SML), in order to facilitate the creation of ± 54 acre parcel with a 102 acre remainder.



-  Subject Lands
-  Contour - 2 meters
-  Riparian Setbacks
-  Alberta Wetland Inventory
-  Surface Water

Division: 04
 Roll: 03316010
 File: PL20210022
 Legal: A portion of NW-16-
 23-28-W04M

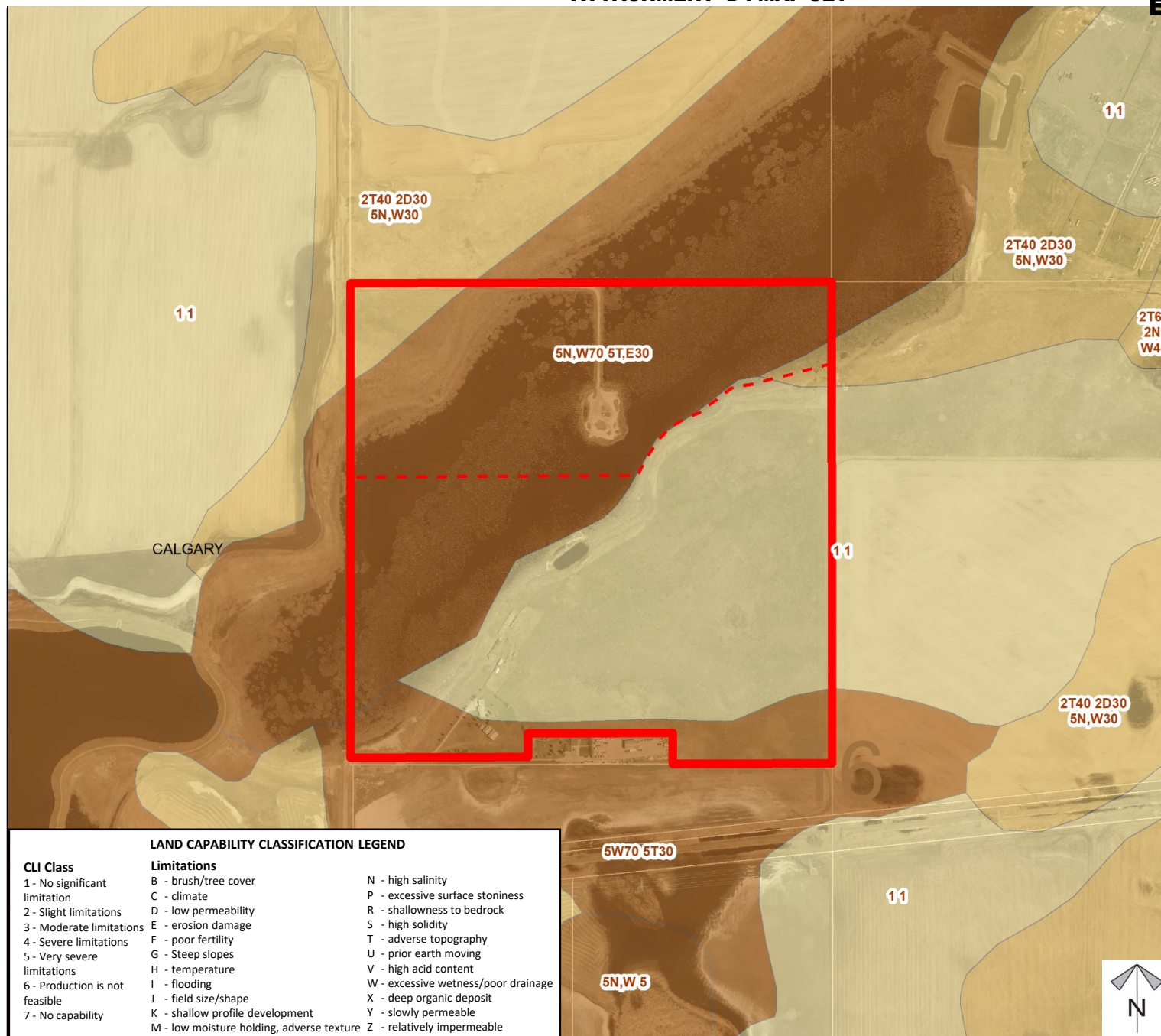
Printed: Feb 8, 2021



Soil Classifications

Redesignation Proposal

To redesignate a portion of land from Agricultural, General District (A-GEN) to Agricultural, Small Parcel District (A-SML), in order to facilitate the creation of ± 54 acre parcel with a 102 acre remainder.



Division: 04
Roll: 03316010
File: PL20210022
Legal: A portion of NW-16-23-28-W04M

Printed: Feb 8, 2021



Landowner Circulation Area

Redesignation Proposal

To redesignate a portion of land from Agricultural, General District (A-GEN) to Agricultural, Small Parcel District (A-SML), in order to facilitate the creation of \pm 54 acre parcel with a 102 acre remainder.

Legend

Support

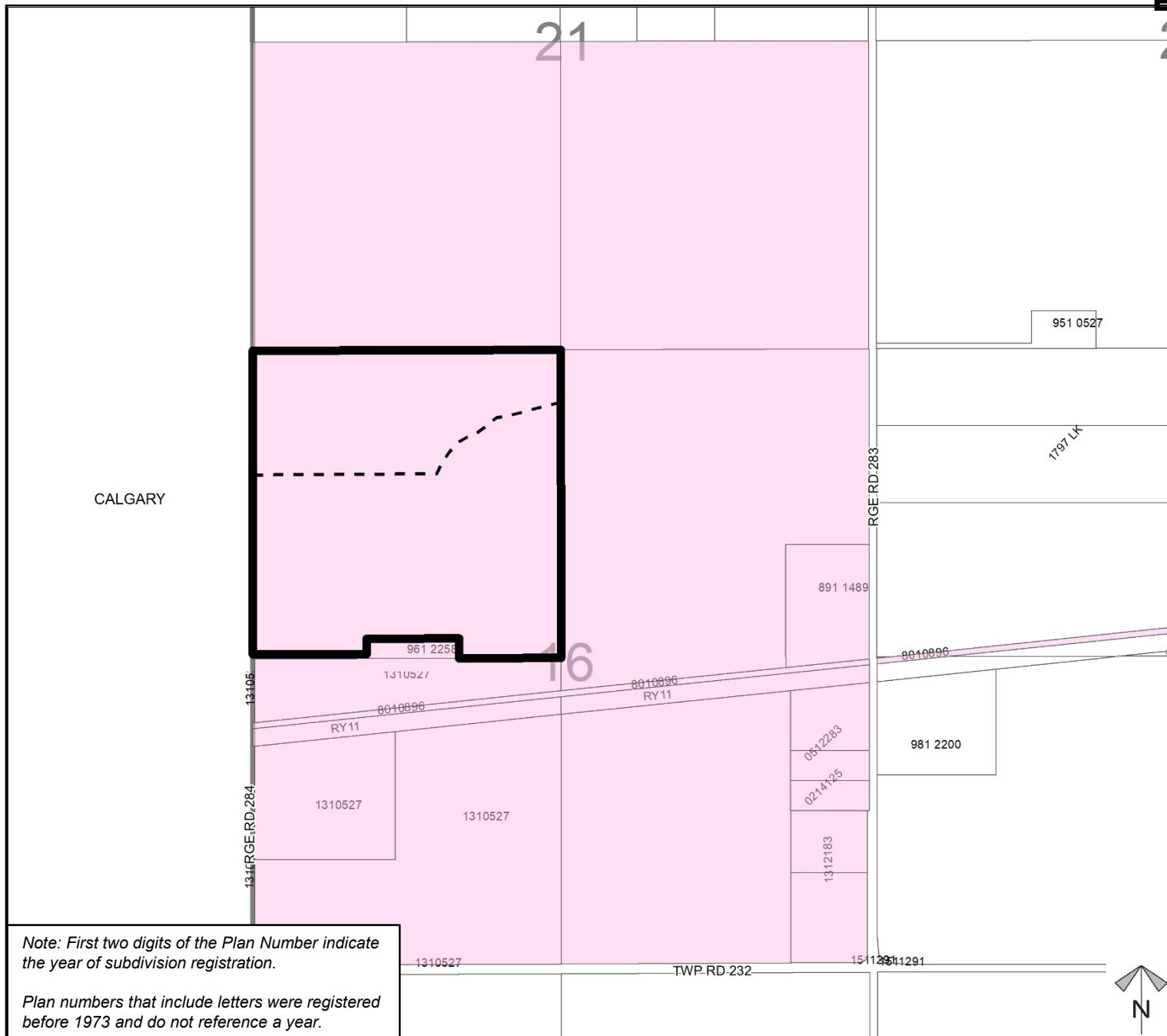


Opposition



Division: 04
Roll: 03316010
File: PL20210022
Legal: A portion of NW-16-23-28-W04M

Printed: Feb 8, 2021



Note: First two digits of the Plan Number indicate the year of subdivision registration.

Plan numbers that include letters were registered before 1973 and do not reference a year.