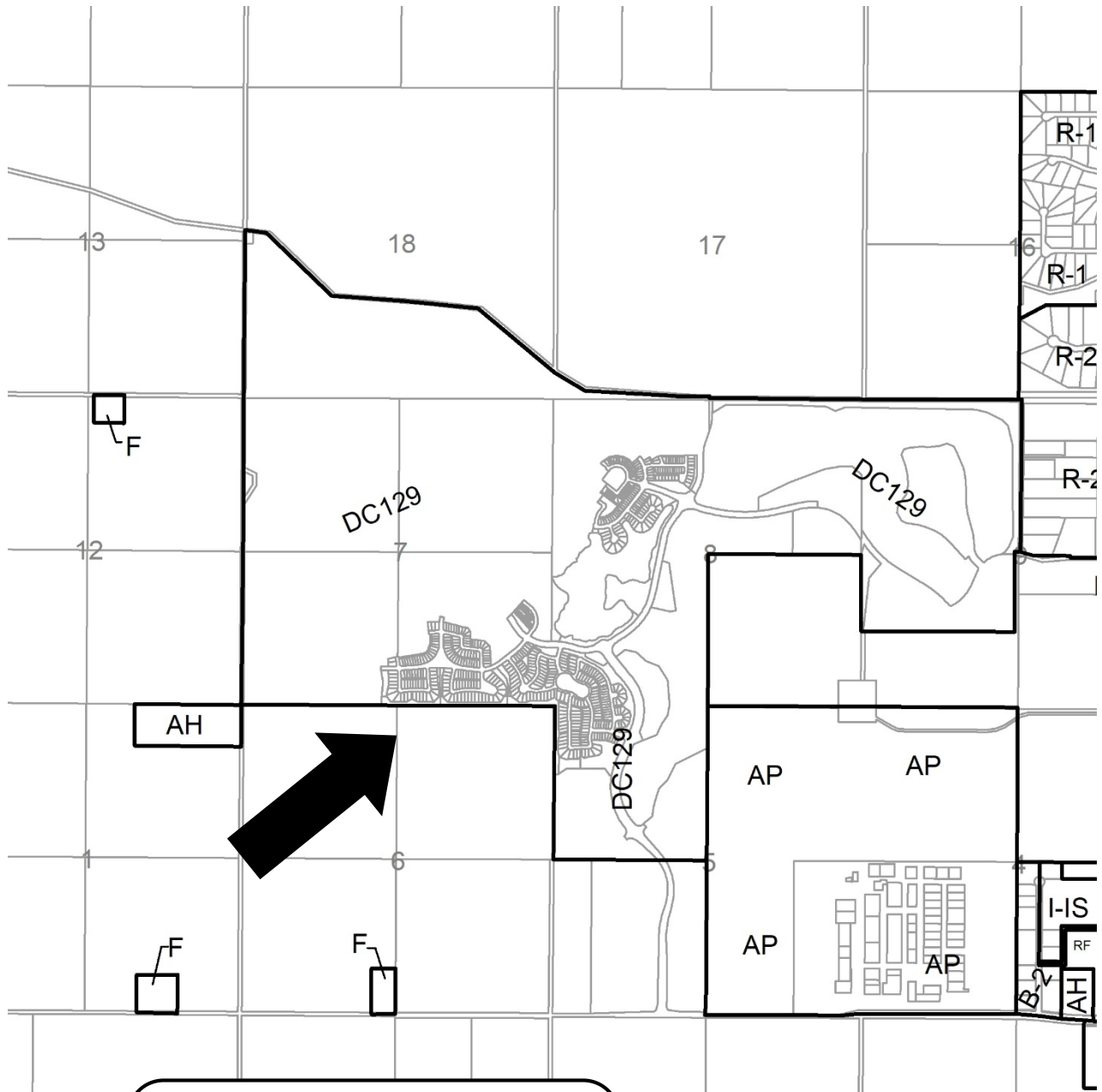


VR-1, VR-2 and VC-1 within DC-129

Date: August 7, 2020

Division # 2

File: PL20200090



Ranch and Farm	B-1 Highway Business
RF2 Ranch and Farm Two	B-2 General Business
RF3 Ranch and Farm Three	B-3 Limited Business
AH Agricultural Holding	B-4 Recreation Business
F Farmstead	B-5 Agricultural Business
R-1 Residential One	B-6 Local Business
R-2 Residential Two	NRI Natural Resource Industrial
R-3 Residential Three	HR-1 Hamlet Residential Single Family
DC Direct Control	HR-2 Hamlet Residential (2)
PS Public Service	HC Hamlet Commercial
	AP Airport

LAND USE MAP

VR-1, VR-2 and VC-1 within DC-129

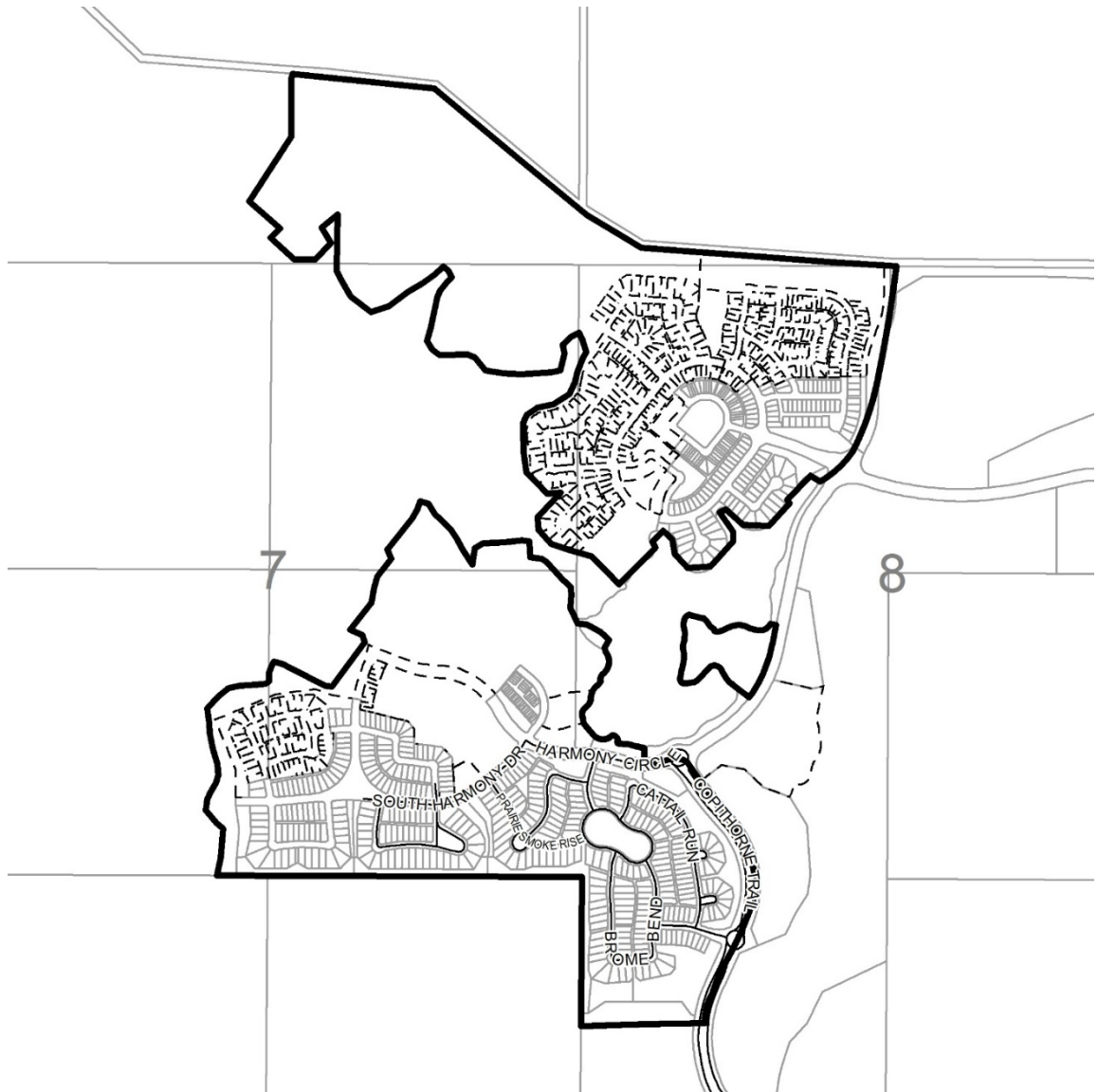
Date: August 7, 2020

Division # 2

File: PL20200090

PL20200090: Textual amendments to Direct Control Bylaw (DC-129) to adjust the Development Regulations for:

- Village Residential 1 Development Cell (VR-1, Sections 8.7.0, Table 1),
- Village Residential 2 Development Cell (VR-2, Sections 9.7.0, Table 2),
- Village Core 1 Development Cell (VC-1, Sections 5.2.0., 5.3.1, 5.4.0, 5.6.0, 5.8.0, 5.9.0, 5.12.0, 5.13.0),
- Definition (Section 10), and Schedules A and C.



DEVELOPMENT PROPOSAL

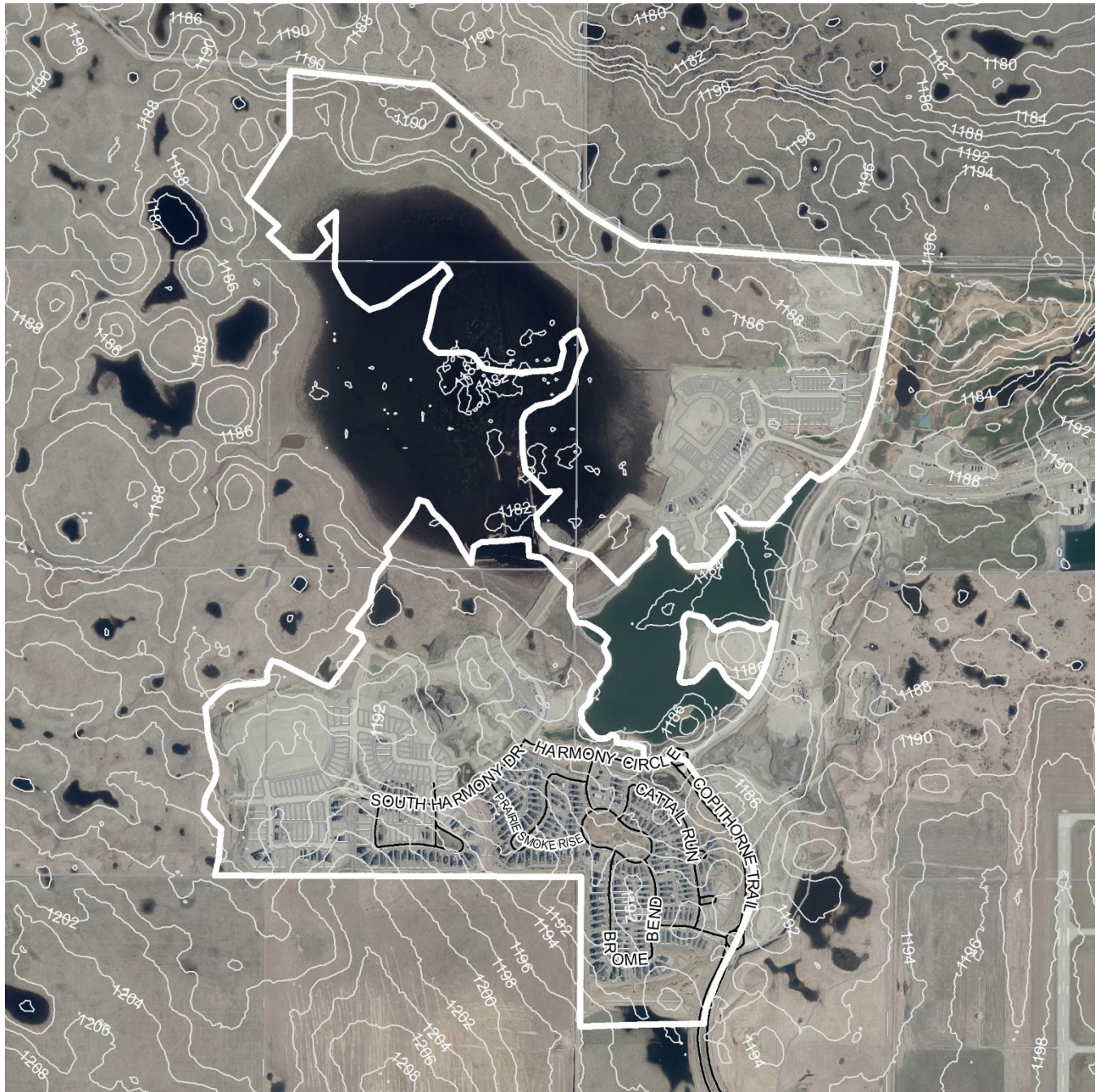


VR-1, VR-2 and VC-1 within DC-129

Date: August 7, 2020

Division # 2

File: PL20200090



Contours are generated using 10m grid points, and depict general topographic features of the area. Detail accuracy at a local scale cannot be guaranteed. They are included for reference use only.

TOPOGRAPHY

Contour Interval 2 M

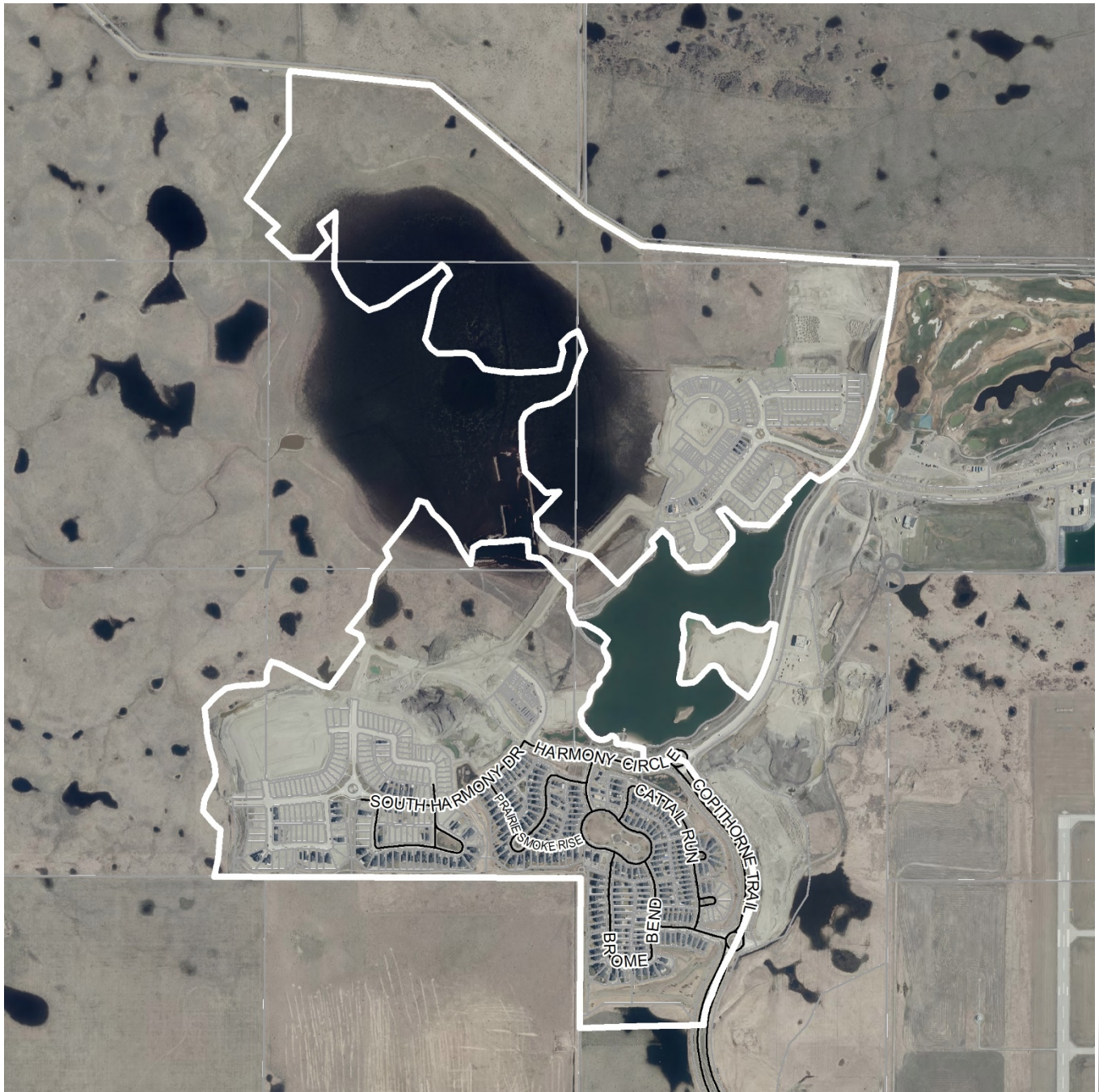


VR-1, VR-2 and VC-1 within DC-129

Date: August 7, 2020

Division # 2

File: PL20200090



Note: Post processing of raw aerial photography may cause varying degrees of visual distortion at the local level.

AIR PHOTO

Spring 2020

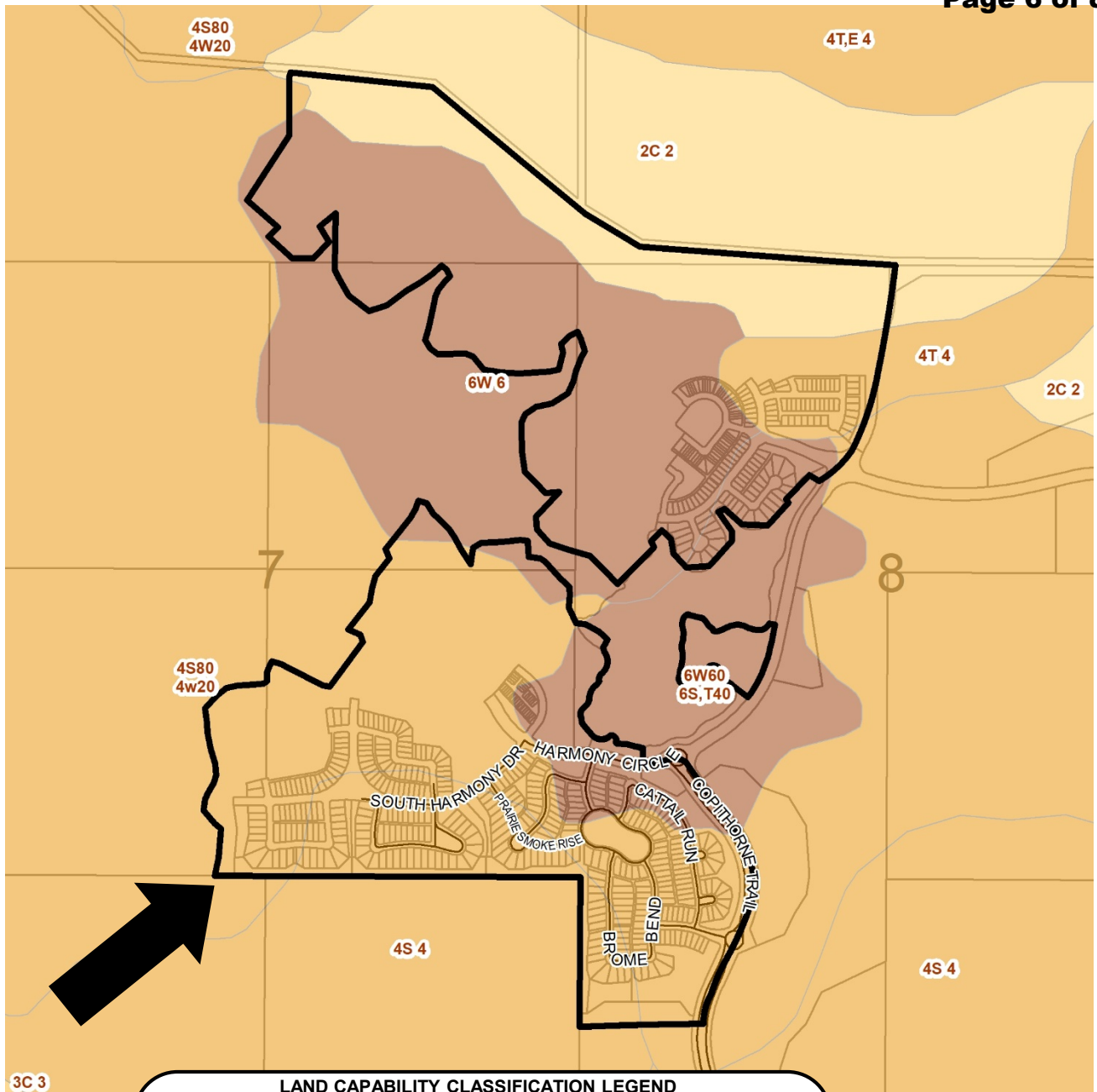


VR-1, VR-2 and VC-1 within DC-129

Date: August 7, 2020

Division # 2

File: PL20200090



LAND CAPABILITY CLASSIFICATION LEGEND
Limitations refer to cereal, oilseeds and tame hay crops

CLI Class

- 1 - No significant limitation
- 2 - Slight limitations
- 3 - Moderate limitations
- 4 - Severe limitations
- 5 - Very severe limitations
- 6 - Production is not feasible
- 7 - No capability

Limitations

- B - brush/tree cover
- C - climate
- D - low permeability
- E - erosion damage
- F - poor fertility
- G - Steep slopes
- H - temperature
- I - flooding
- J - field size/shape
- K - shallow profile development
- M - low moisture holding, adverse texture
- N - high salinity
- P - excessive surface stoniness
- R - shallowness to bedrock
- S - high sodicity
- T - adverse topography
- U - prior earth moving
- V - high acid content
- W - excessive wetness/poor drainage
- X - deep organic deposit
- Y - slowly permeable
- Z - relatively impermeable

SOIL MAP

VR-1, VR-2 and VC-1 within DC-129

Date: August 7, 2020

Division # 2

File: PL20200090

File: PL20200090

File: PL20200090