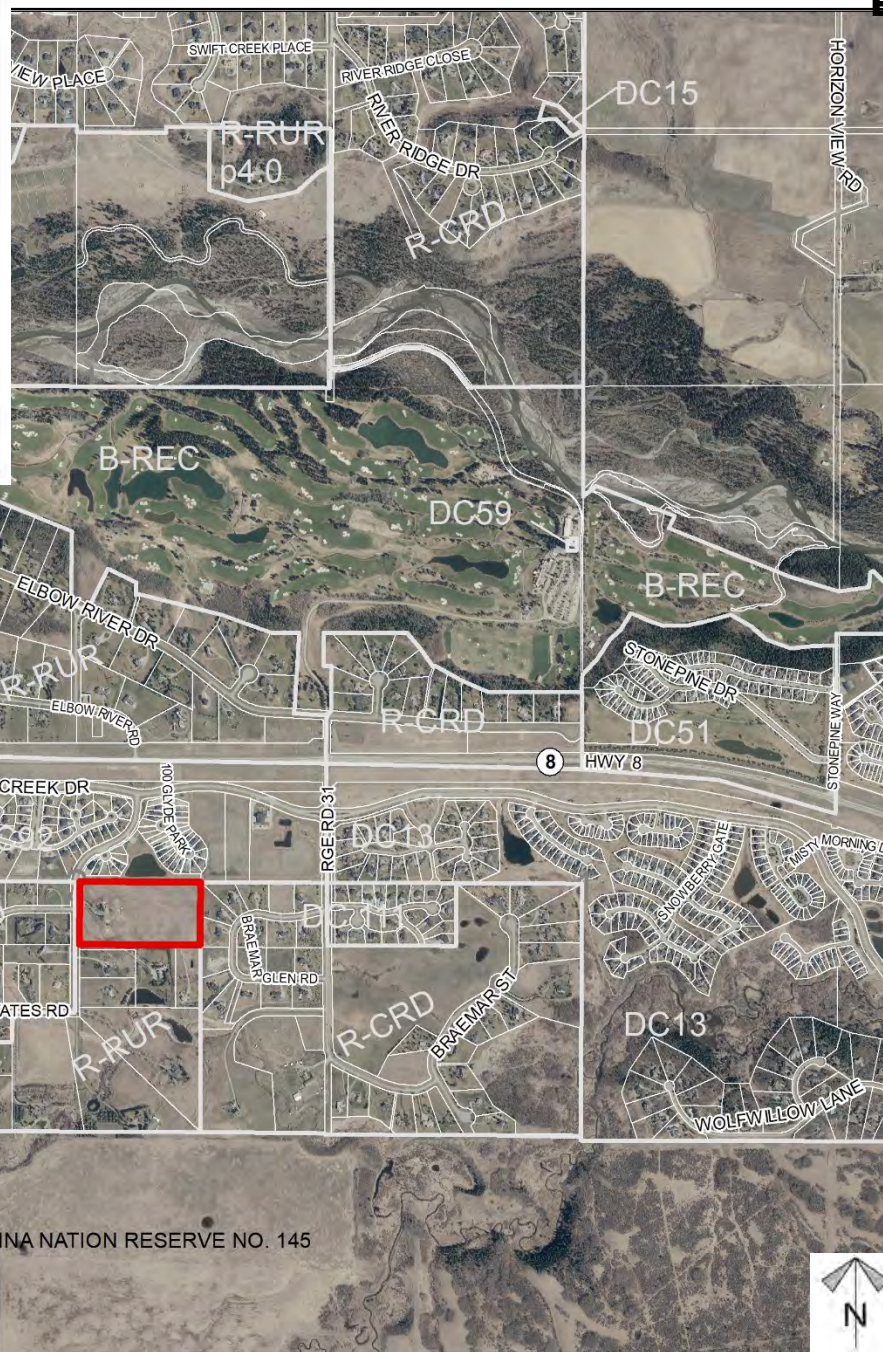
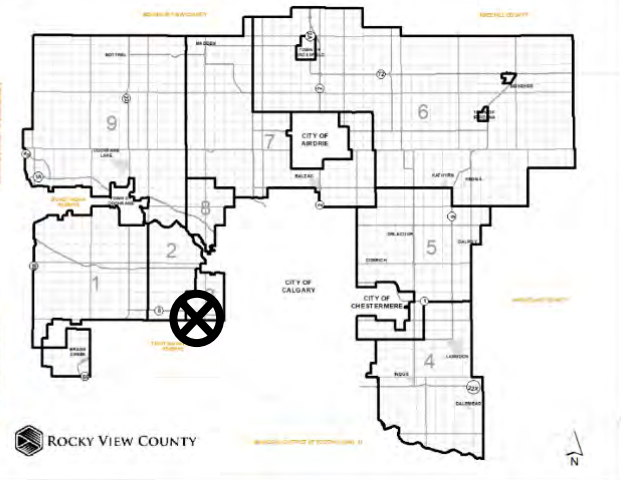




## Location & Context

### Redesignation Proposal

To redesignate the subject lands from Residential, Rural District (R-RUR) to Residential, Country Residential District (R-CRD) to accommodate the creation of seven lots.



Division: 3  
Roll: 04702011  
File: PL20190140  
Printed: November 9, 2020  
Legal: SE-02-24-03-W05M  
Block: 8 Plan: 7410676





## Development Proposal

### Redesignation Proposal

To redesignate the subject lands from Residential, Rural District (R-RUR) to Residential, Country Residential District (R-CRD) to accommodate the creation of seven lots.

R-RUR → R-CRD  
± 7.74 ha  
(19.12 acre)

WEST MEADOWS ESTATES RD



Division: 3  
Roll: 04702011  
File: PL20190140  
Printed: November 9, 2020  
Legal: SE-02-24-03-W05M  
Block:8 Plan:7410676

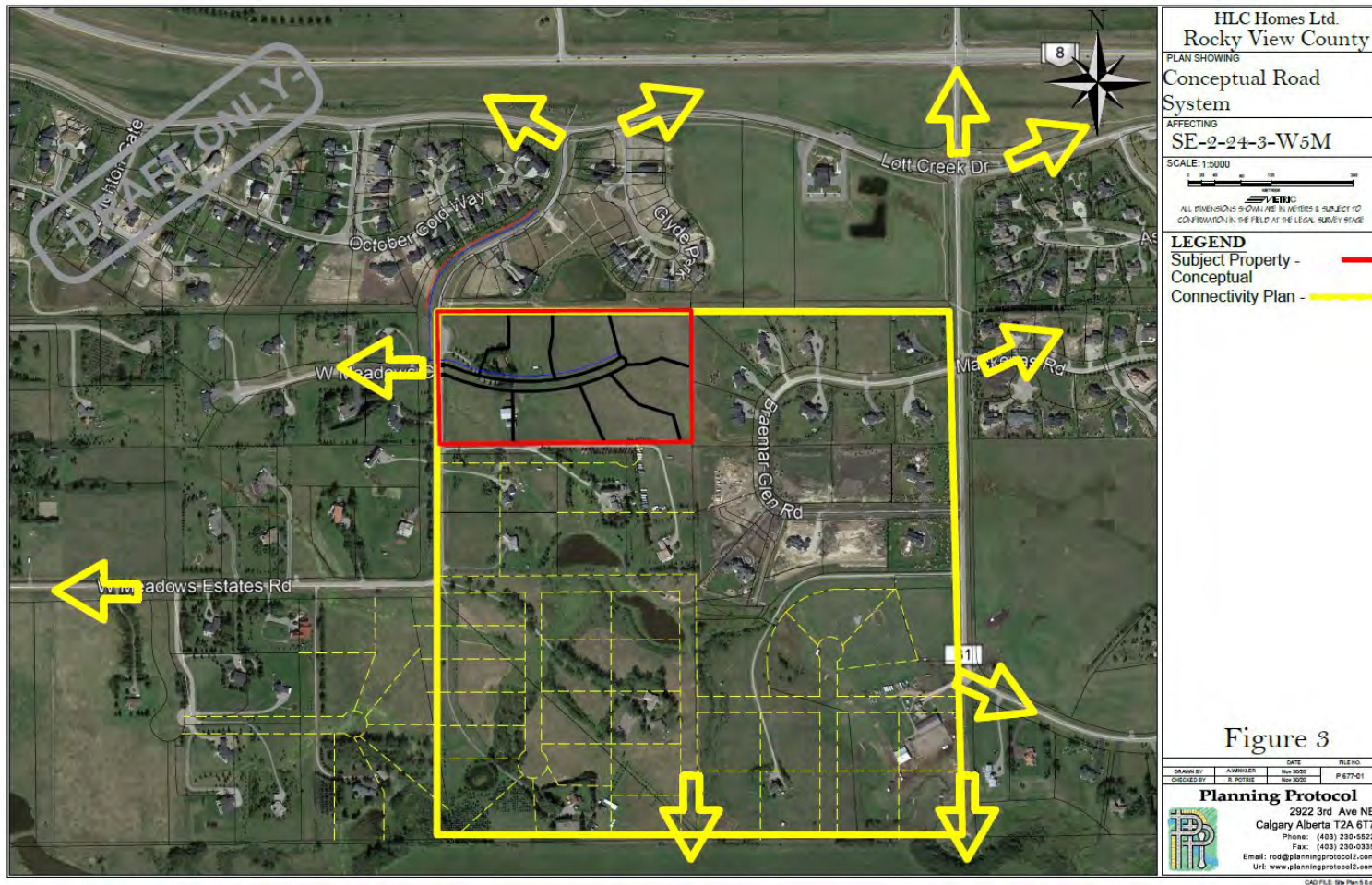




## Lot and Road Plan

### Redesignation Proposal

To redesignate the subject lands from Residential, Rural District (R-RUR) to Residential, Country Residential District (R-CRD) to accommodate the creation of seven lots.



Division: 3  
Roll: 04702011  
File: PL20190140  
Printed: November 9, 2020  
Legal: SE-02-24-03-W05M  
Block: 8 Plan: 7410676

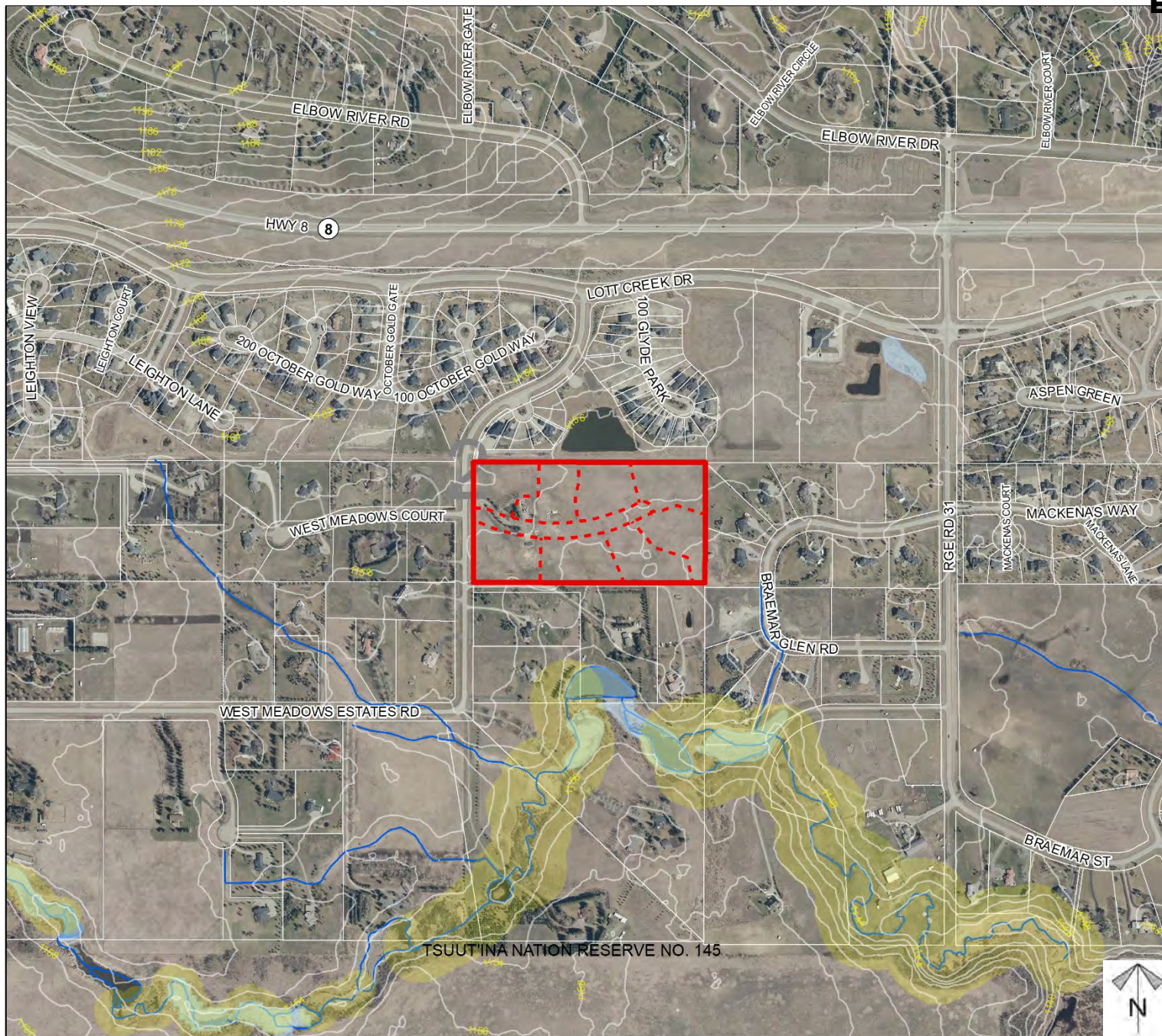




## Environmental

Redesignation Proposal

To redesignate the subject lands from Residential, Rural District (R-RUR) to Residential, Country Residential District (R-CRD) to accommodate the creation of seven lots.



- Subject Lands
- Contour - 2 meters
- Riparian Setbacks
- Alberta Wetland Inventory
- Surface Water

Division: 3  
 Roll: 04702011  
 File: PL20190140  
 Printed: November 9, 2020  
 Legal: SE-02-24-03-W05M  
 Block: 8 Plan: 7410676

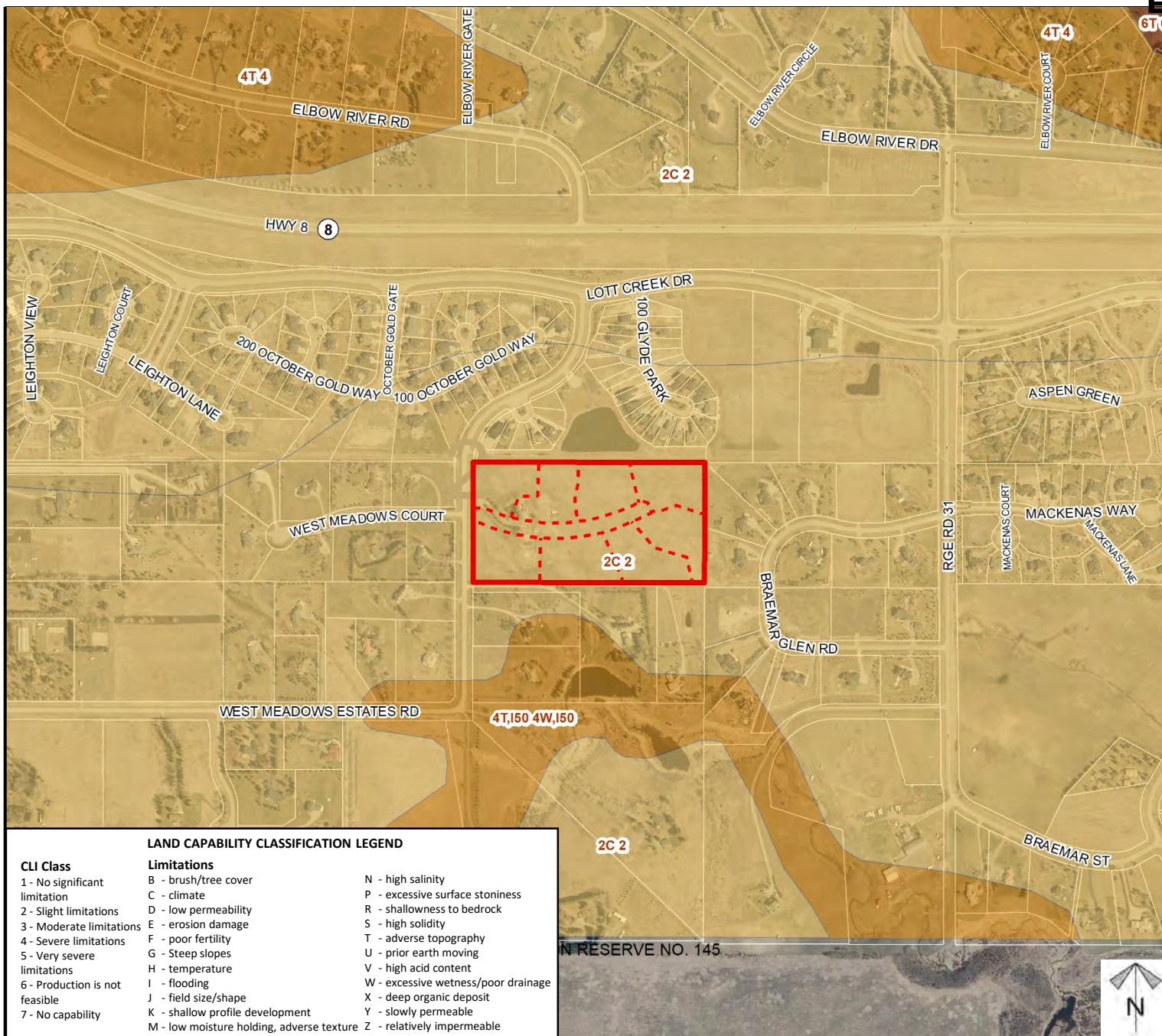




## Soil Classifications

### Redesignation Proposal

To redesignate the subject lands from Residential, Rural District (R-RUR) to Residential, Country Residential District (R-CRD) to accommodate the creation of seven lots.



#### LAND CAPABILITY CLASSIFICATION LEGEND

##### CLI Class

- 1 - No significant limitation
- 2 - Slight limitations
- 3 - Moderate limitations
- 4 - Severe limitations
- 5 - Very severe limitations
- 6 - Production is not feasible
- 7 - No capability

##### Limitations

- B - brush/tree cover
- C - climate
- D - low permeability
- E - erosion damage
- F - poor fertility
- G - Steep slopes
- H - temperature
- I - flooding
- J - field size/shape
- K - shallow profile development
- M - low moisture holding, adverse texture
- N - high salinity
- P - excessive surface stoniness
- R - shallowness to bedrock
- S - high solidity
- T - adverse topography
- U - prior earth moving
- V - high acid content
- W - excessive wetness/poor drainage
- X - deep organic deposit
- Y - slowly permeable
- Z - relatively impermeable

Division: 3

Roll: 04702011

File: PL20190140

Printed: November 9, 2020

Legal: SE-02-24-03-W05M

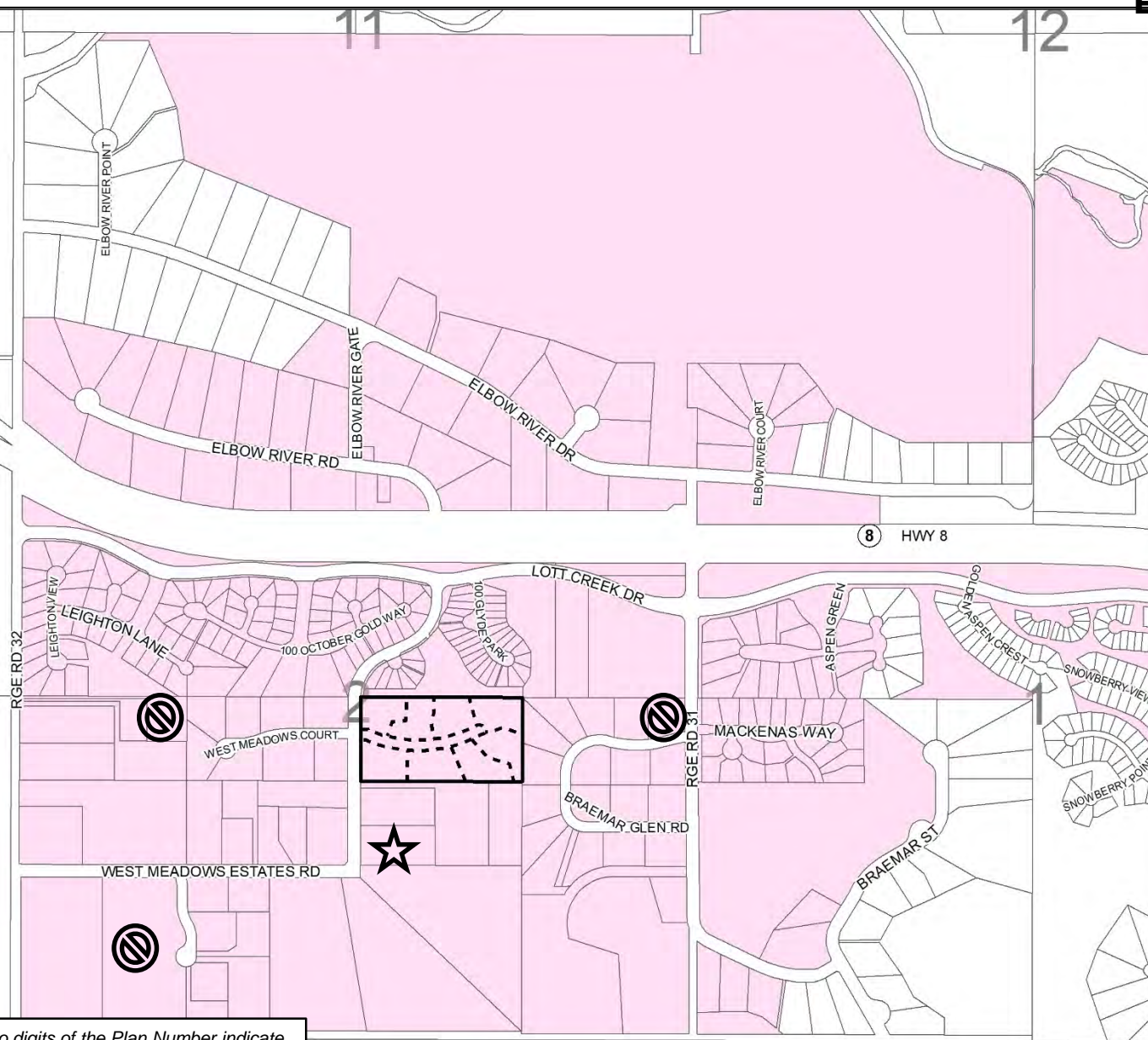
Block:8 Plan:7410676



## Landowner Circulation Area

### Redesignation Proposal

To redesignate the subject lands from Residential, Rural District (R-RUR) to Residential, Country Residential District (R-CRD) to accommodate the creation of seven lots.



### Legend

Support



Non-Support



Note: First two digits of the Plan Number indicate the year of subdivision registration.

Plan numbers that include letters were registered before 1973 and do not reference a year.

TSUUT'INA NATION RESERVE NO. 145

Division: 3

Roll: 04702011

File: PL20190140

Printed: November 9, 2020

Legal: SE-02-24-03-W05M

Block: 8 Plan: 7410676