

Redesignation Proposal

To redesignate a ±3.04 hectare (±7.50 ac) portion of the subject lands from Agricultural, General District (A-GEN) to Business, Live-Work District (B-LWK) to accommodate future subdivision.

Division: 05
Roll: 04330005
File: PL20210076
Printed: May 3, 2021
Legal: Block:B Plan:6491 AV
within NW-30-24-28-W04M

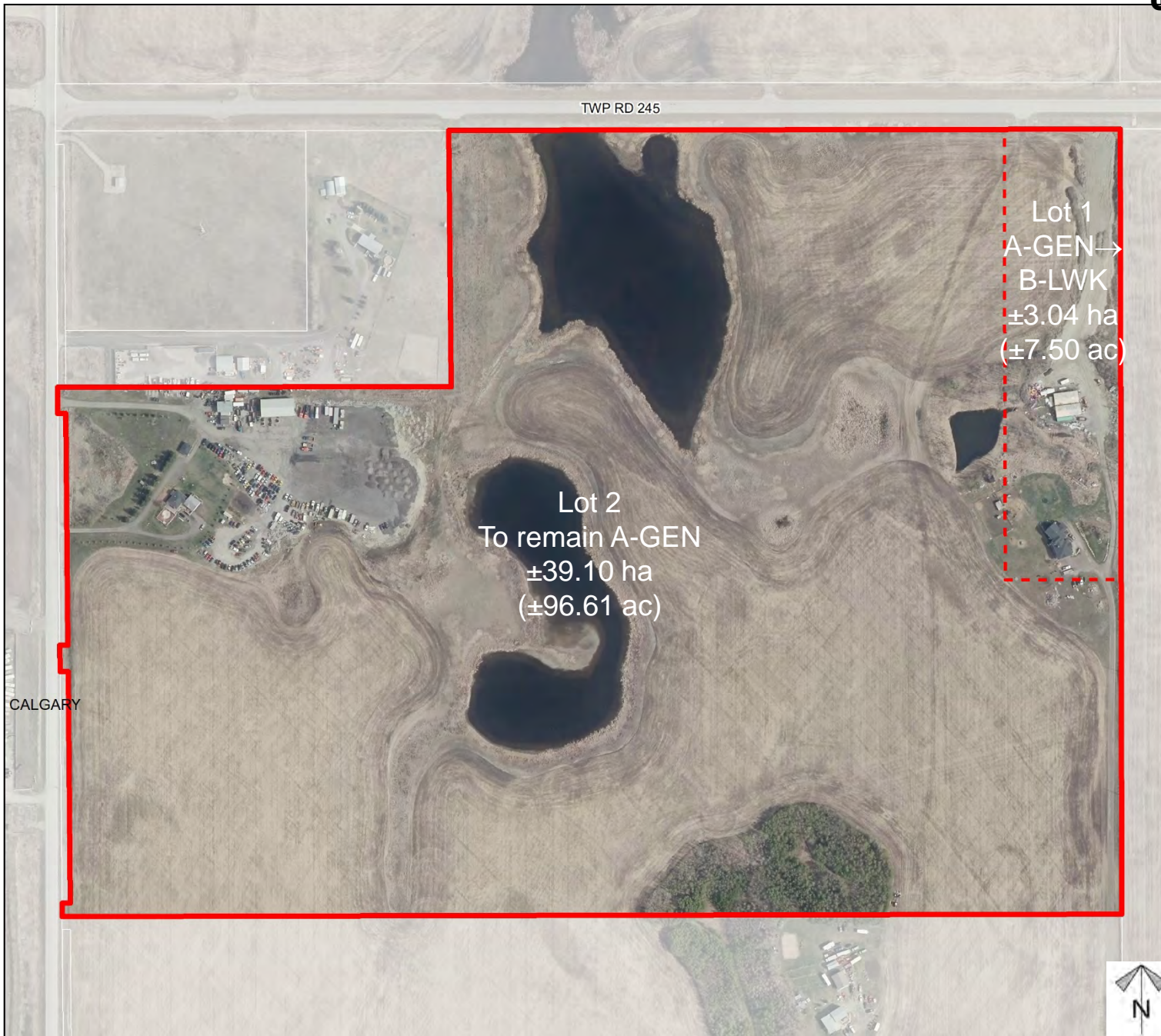




Development Proposal

Redesignation Proposal

To redesignate a ± 3.04 hectare (± 7.50 ac) portion of the subject lands from Agricultural, General District (A-GEN) to Business, Live-Work District (B-LWK) to accommodate future subdivision.



Lot 1
A-GEN →
B-LWK
 ± 3.04 ha
(± 7.50 ac)

Lot 2
To remain A-GEN
 ± 39.10 ha
(± 96.61 ac)

Division: 05
Roll: 04330005
File: PL20210076
Printed: May 3, 2021
Legal: Block: B Plan: 6491 AV
within NW-30-24-28-W04M



Environmental

Redesignation Proposal

To redesignate a ± 3.04 hectare (± 7.50 ac) portion of the subject lands from Agricultural, General District (A-GEN) to Business, Live-Work District (B-LWK) to accommodate future subdivision.

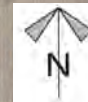
-  Subject Lands
-  Contour - 2 meters
-  Riparian Setbacks
-  Alberta Wetland Inventory
-  Surface Water

CALGARY

TWP RD 245

MCKERVEY PLACE

Division: 05
 Roll: 04330005
 File: PL20210076
 Printed: May 3, 2021
 Legal: Block: B Plan: 6491 AV
 within NW-30-24-28-W04M

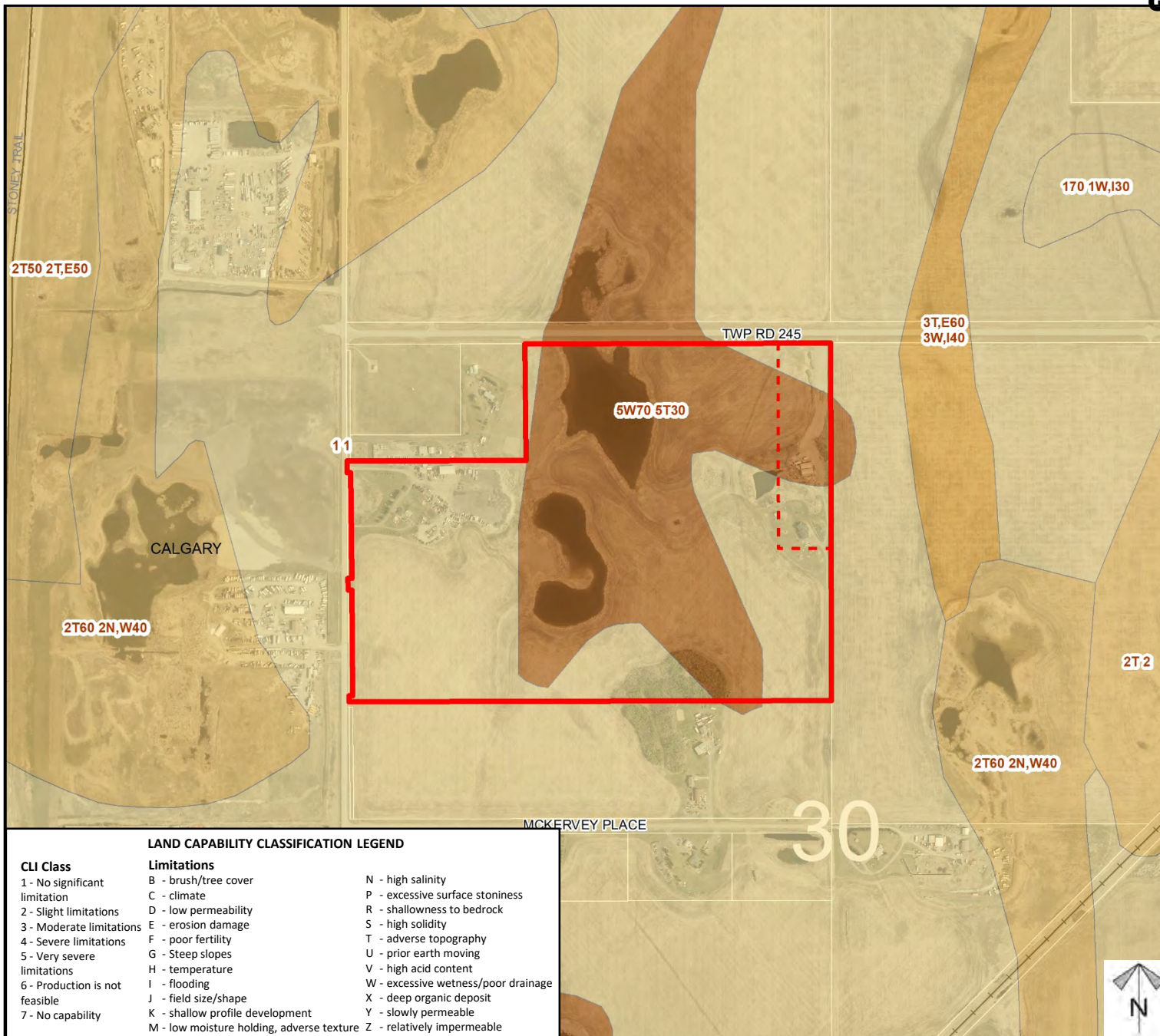




Soil Classifications

Redesignation Proposal

To redesignate a ± 3.04 hectare (± 7.50 ac) portion of the subject lands from Agricultural, General District (A-GEN) to Business, Live-Work District (B-LWK) to accommodate future subdivision.



LAND CAPABILITY CLASSIFICATION LEGEND

CLI Class

- 1 - No significant limitation
- 2 - Slight limitations
- 3 - Moderate limitations
- 4 - Severe limitations
- 5 - Very severe limitations
- 6 - Production is not feasible
- 7 - No capability

Limitations

- B - brush/tree cover
- C - climate
- D - low permeability
- E - erosion damage
- F - poor fertility
- G - Steep slopes
- H - temperature
- I - flooding
- J - field size/shape
- K - shallow profile development
- M - low moisture holding, adverse texture
- N - high salinity
- P - excessive surface stoniness
- R - shallowness to bedrock
- S - high solidity
- T - adverse topography
- U - prior earth moving
- V - high acid content
- W - excessive wetness/poor drainage
- X - deep organic deposit
- Y - slowly permeable
- Z - relatively impermeable

Division: 05
Roll: 04330005
File: PL20210076
Printed: May 3, 2021
Legal: Block: B Plan: 6491 AV
within NW-30-24-28-W04M



Landowner Circulation Area

Redesignation Proposal

To redesignate a ± 3.04 hectare (± 7.50 ac) portion of the subject lands from Agricultural, General District (A-GEN) to Business, Live-Work District (B-LWK) to accommodate future subdivision.

Legend

Support



Opposition



Division: 05

Roll: 04330005

File: PL20210076

Printed: May 3, 2021

Legal: Block: B Plan: 6491 AV
within NW-30-24-28-W04M