

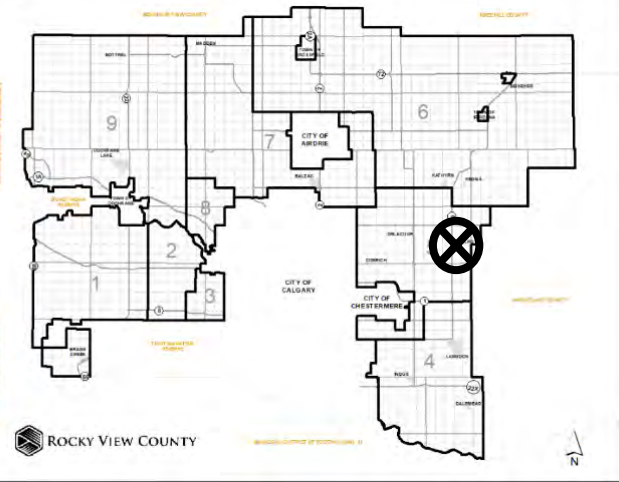


Location & Context

Redesignation Proposal

To redesignate a portion of the subject lands from Agriculture, General District (A-GEN) to Residential, Rural District (R-RUR) in order to facilitate the creation of a ± 7.11 hectare (± 17.57 acre) parcel with ± 49.88 hectare (± 123.20 acre) remainder.

Division: 05
Roll: 04234003
File: PL20210068
Printed: April 15, 2021
Legal: NW-34-24-27-W04M



Development Proposal

Redesignation Proposal

To redesignate a portion of the subject lands from Agriculture, General District (A-GEN) to Residential, Rural District (R-RUR) in order to facilitate the creation of a ± 7.11 hectare (± 17.57 acre) parcel with ± 49.88 hectare (± 123.20 acre) remainder.

A-GEN \rightarrow R-RUR
 ± 7.11 ha
(± 17.57 ac)

± 49.88 ha
(± 123.20 ac)

RGE RD 273

TWP RD 250



Division: 05
Roll: 04234003
File: PL20210068
Printed: April 15, 2021
Legal: NW-34-24-27-W04M



Environmental

Redesignation Proposal

To redesignate a portion of the subject lands from Agriculture, General District (A-GEN) to Residential, Rural District (R-RUR) in order to facilitate the creation of a ± 7.11 hectare (± 17.57 acre) parcel with ± 49.88 hectare (± 123.20 acre) remainder.

-  Subject Lands
-  Contour - 2 meters
-  Riparian Setbacks
-  Alberta Wetland Inventory
-  Surface Water

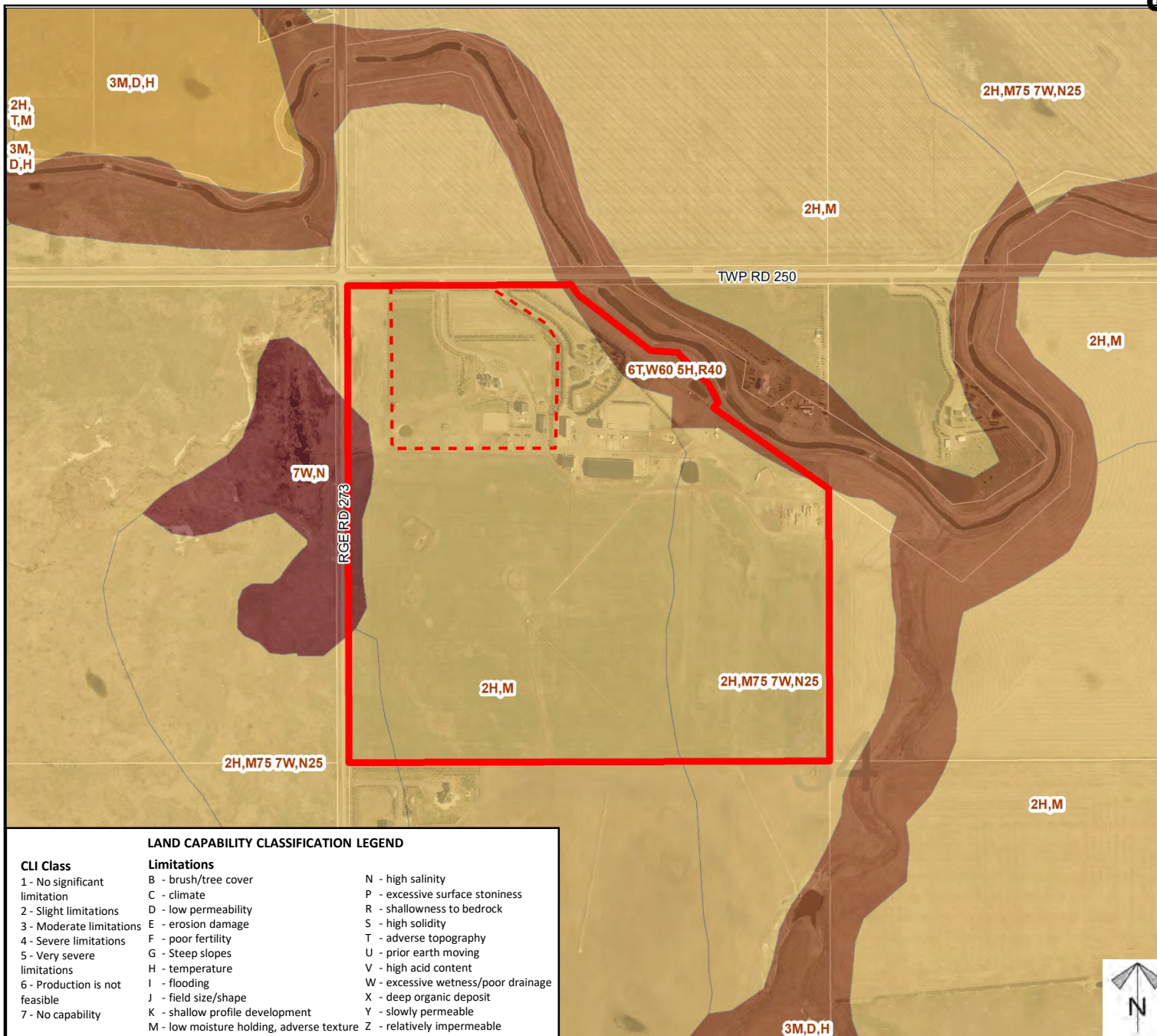
Division: 05
 Roll: 04234003
 File: PL20210068
 Printed: April 15, 2021
 Legal: NW-34-24-27-W04M



Soil Classifications

Redesignation Proposal

To redesignate a portion of the subject lands from Agriculture, General District (A-GEN) to Residential, Rural District (R-RUR) in order to facilitate the creation of a ± 7.11 hectare (± 17.57 acre) parcel with ± 49.88 hectare (± 123.20 acre) remainder.



Division: 05
 Roll: 04234003
 File: PL20210068
 Printed: April 15, 2021
 Legal: NW-34-24-27-W04M

Redesignation Proposal

To redesignate a portion of the subject lands from Agriculture, General District (A-GEN) to Residential, Rural District (R-RUR) in order to facilitate the creation of a ± 7.11 hectare (± 17.57 acre) parcel with ± 49.88 hectare (± 123.20 acre) remainder.

Legend

Support



Opposition



Division: 05
Roll: 04234003
File: PL20210068
Printed: April 15, 2021
Legal: NW-34-24-27-W04M

