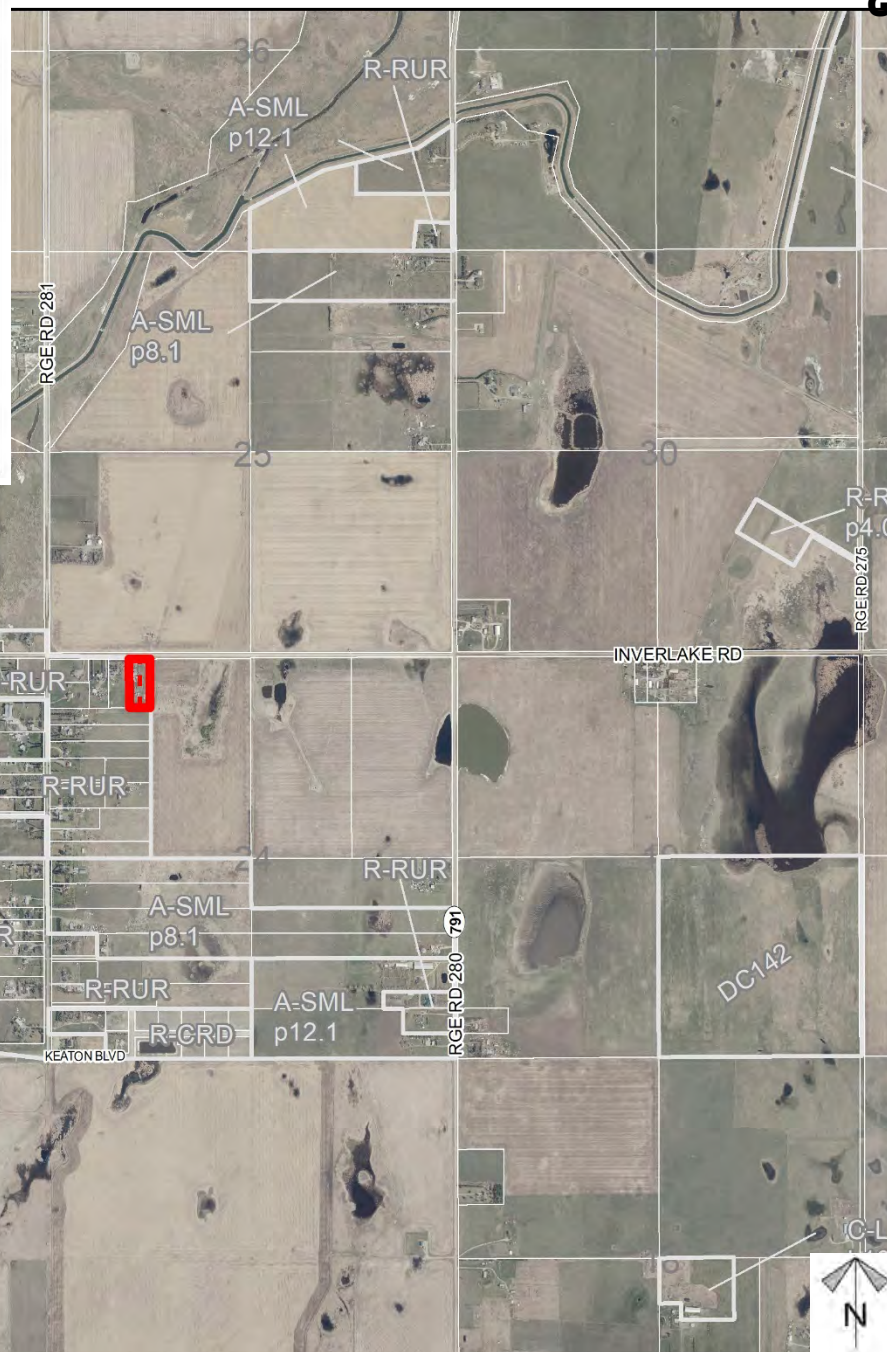
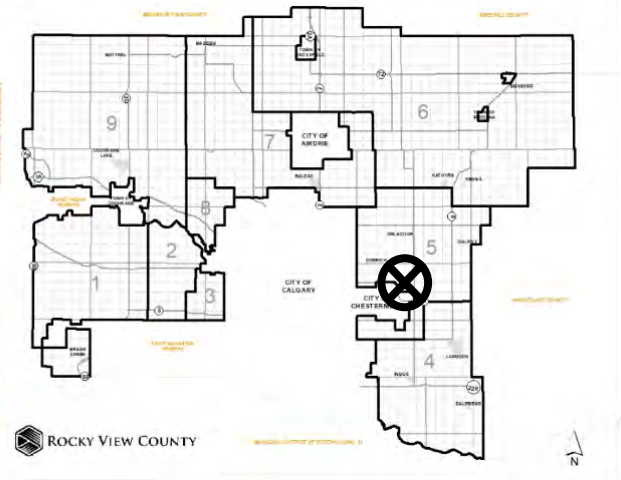


Location & Context

Redesignation Proposal

To redesignate the subject lands from Residential, Rural District (R-RUR) to Residential, Country Residential District (R-CRD) in order to facilitate the creation of a ± 0.81 hectare (± 2.02 acre) parcel with ± 0.81 hectare (± 2.02 acre) remainder.

Division: 05
 Roll: 04324032
 File: PL20210067
 Printed: April 15, 2021
 Legal: Block:1 Plan:9411890
 within NW-24-24-28-W04M





Development Proposal

Redesignation Proposal

To redesignate the subject lands from Residential, Rural District (R-RUR) to Residential, Country Residential District (R-CRD) in order to facilitate the creation of a ± 0.81 hectare (± 2.02 acre) parcel with ± 0.81 hectare (± 2.02 acre) remainder.

R-RUR \rightarrow R-CRDR-RUR \rightarrow R-CRD

Lot 1

 ± 0.81 ha
(± 2.02 ac)

Lot 2

 ± 0.81 ha
(± 2.02 ac)


Division: 05

Roll: 04324032

File: PL20210067

Printed: April 15, 2021

Legal: Block: 1 Plan: 9411890
within NW-24-24-28-W04M



Environmental

Redesignation Proposal

To redesignate the subject lands from Residential, Rural District (R-RUR) to Residential, Country Residential District (R-CRD) in order to facilitate the creation of a ± 0.81 hectare (± 2.02 acre) parcel with ± 0.81 hectare (± 2.02 acre) remainder.

-  Subject Lands
-  Contour - 2 meters
-  Riparian Setbacks
-  Alberta Wetland Inventory
-  Surface Water

Division: 05
 Roll: 04324032
 File: PL20210067
 Printed: April 15, 2021
 Legal: Block: 1 Plan: 9411890
 within NW-24-24-28-W04M

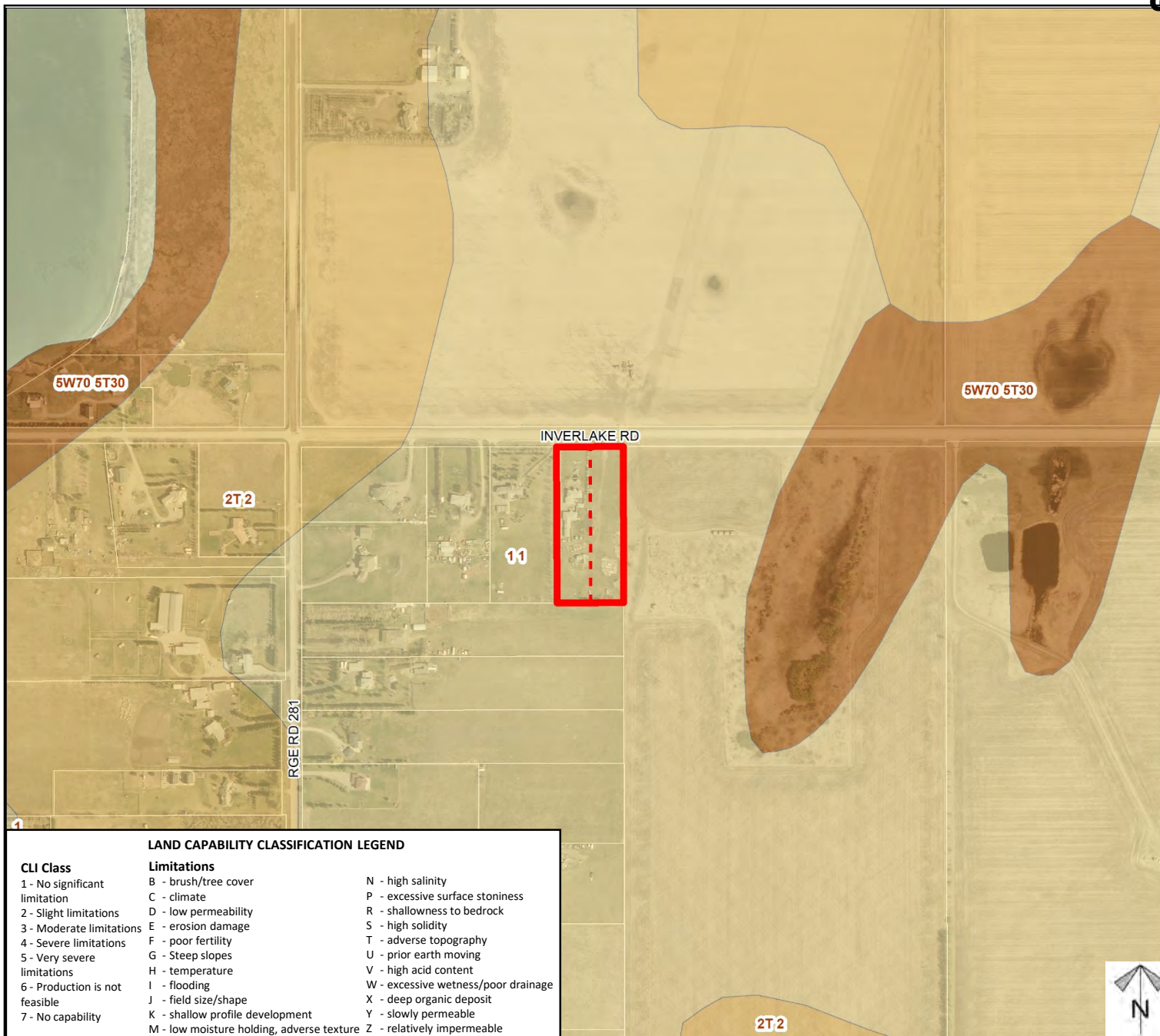




Soil Classifications

Redesignation Proposal

To redesignate the subject lands from Residential, Rural District (R-RUR) to Residential, Country Residential District (R-CRD) in order to facilitate the creation of a ± 0.81 hectare (± 2.02 acre) parcel with ± 0.81 hectare (± 2.02 acre) remainder.



LAND CAPABILITY CLASSIFICATION LEGEND

CLI Class

- 1 - No significant limitation
- 2 - Slight limitations
- 3 - Moderate limitations
- 4 - Severe limitations
- 5 - Very severe limitations
- 6 - Production is not feasible
- 7 - No capability

Limitations

- B - brush/tree cover
- C - climate
- D - low permeability
- E - erosion damage
- F - poor fertility
- G - Steep slopes
- H - temperature
- I - flooding
- J - field size/shape
- K - shallow profile development
- M - low moisture holding, adverse texture
- N - high salinity
- P - excessive surface stoniness
- R - shallowness to bedrock
- S - high solidity
- T - adverse topography
- U - prior earth moving
- V - high acid content
- W - excessive wetness/poor drainage
- X - deep organic deposit
- Y - slowly permeable
- Z - relatively impermeable

Division: 05
Roll: 04324032
File: PL20210067
Printed: April 15, 2021
Legal: Block:1 Plan:9411890
within NW-24-24-28-W04M



Landowner Circulation Area

Redesignation Proposal

To redesignate the subject lands from Residential, Rural District (R-RUR) to Residential, Country Residential District (R-CRD) in order to facilitate the creation of a ± 0.81 hectare (± 2.02 acre) parcel with ± 0.81 hectare (± 2.02 acre) remainder.

Legend

Support



Opposition

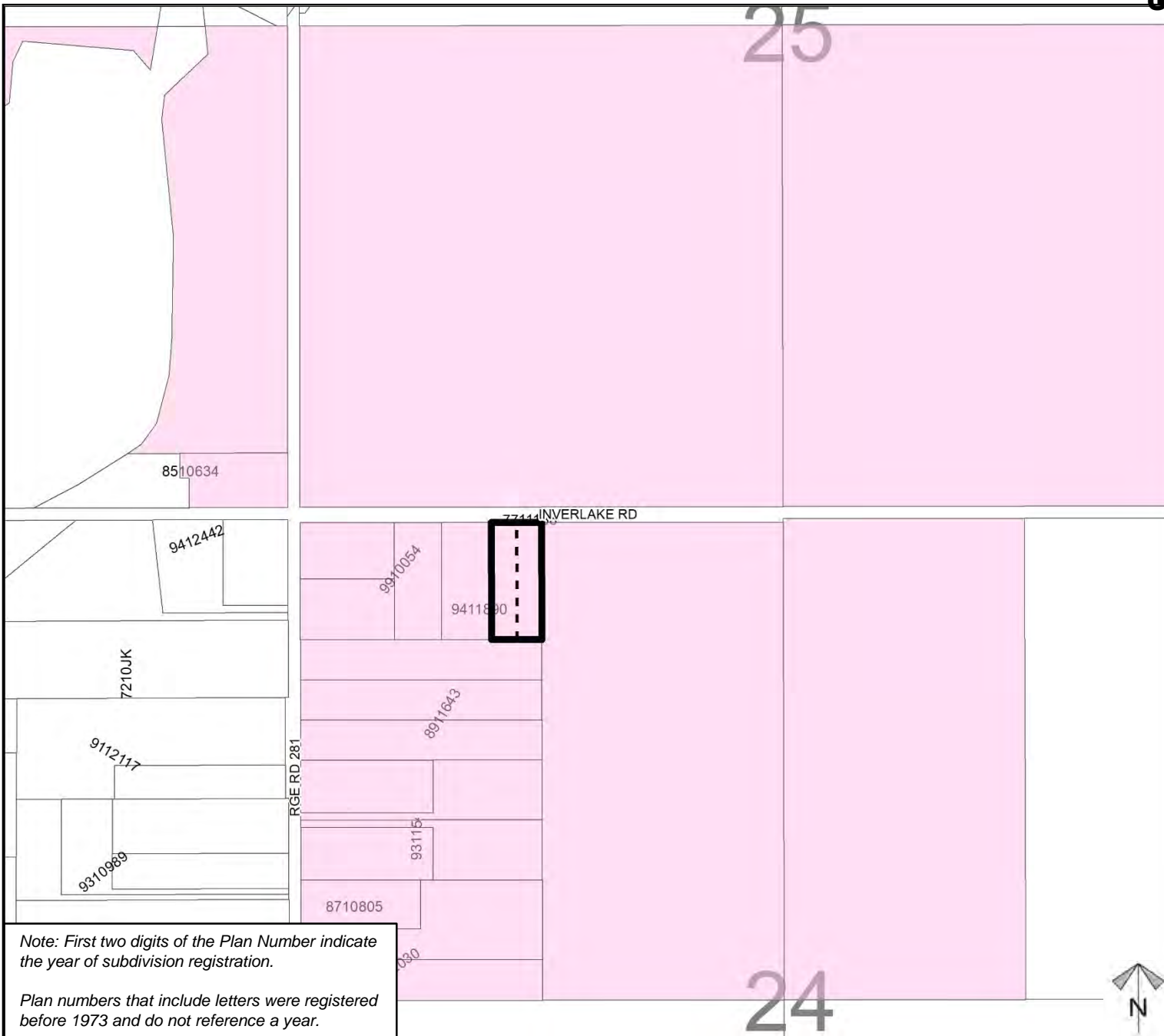


Division: 05

Roll: 04324032

File: PL20210067

Printed: April 15, 2021

Legal: Block: 1 Plan: 9411890
within NW-24-24-28-W04M

Note: First two digits of the Plan Number indicate the year of subdivision registration.

Plan numbers that include letters were registered before 1973 and do not reference a year.