

Figure 13 - Regional Transportation Plan

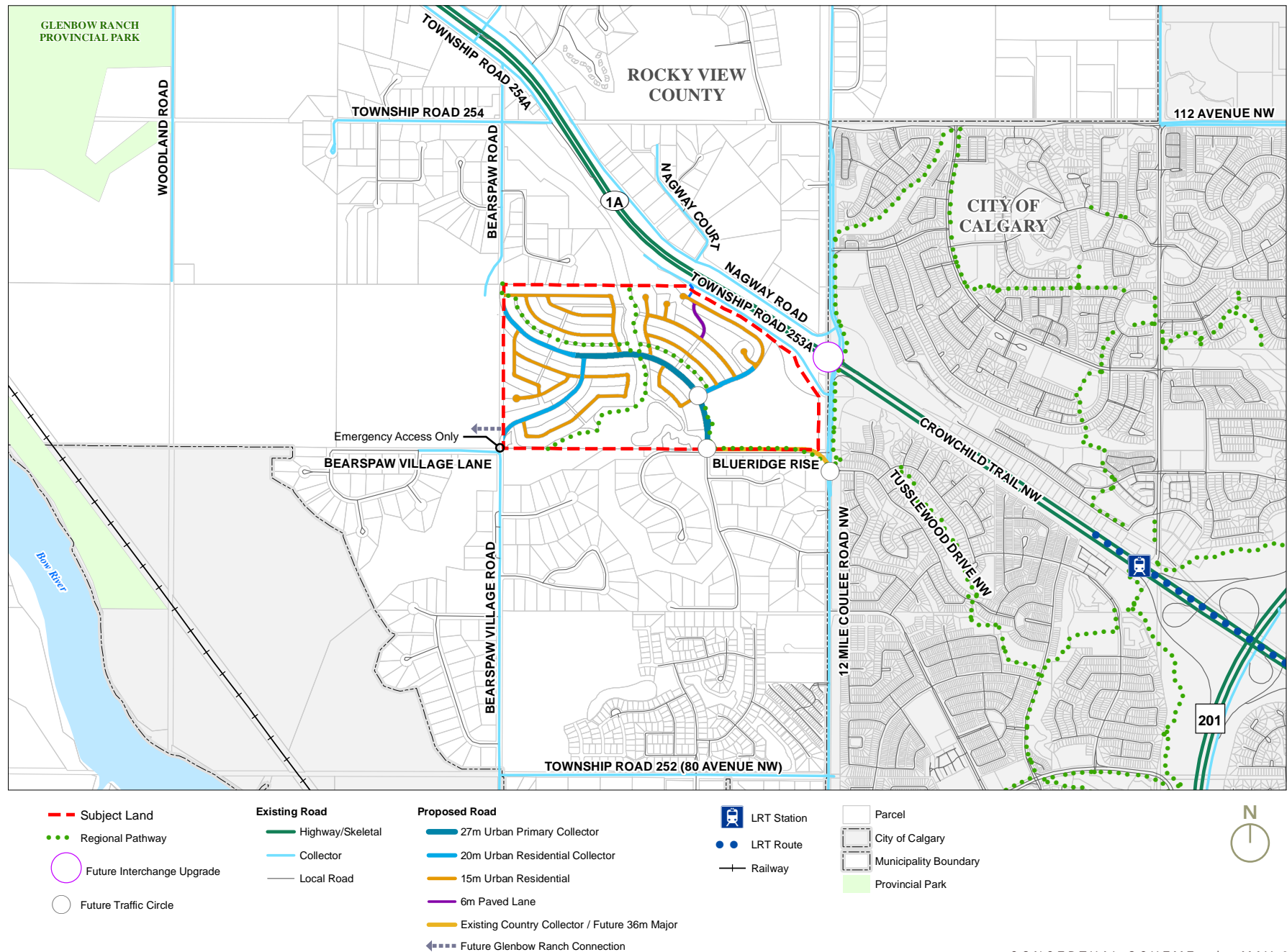
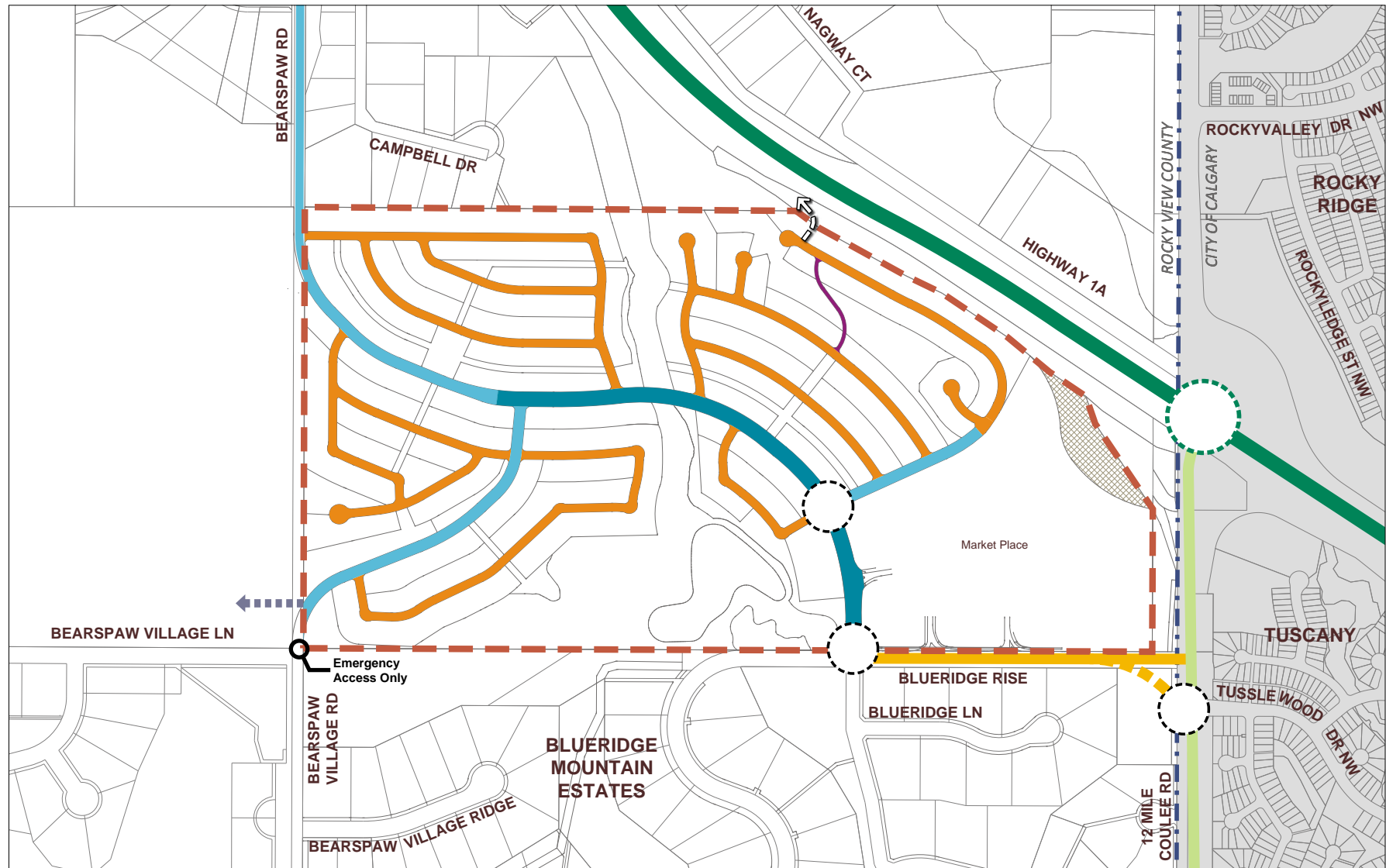


Figure 14 - Internal Transportation Plan



--- Subject Land
--- Municipal Boundary

○ Traffic Circle
○ Interim CFI / Future Interchange

→ Potential Future Access to Farmstead to North

--- Highway / Skeletal
--- 12 Mile Coulee Road
--- Existing Country Collector / Future 36m Major (4-Lane Divided)
--- Future Glenbow Ranch Connection

--- 27m Urban Primary Collector
--- 20m Urban Collector
--- 15m Urban Residential
--- 6m Paved Lane
--- Future Road Alignment



Figure 13 - Regional Transportation Plan

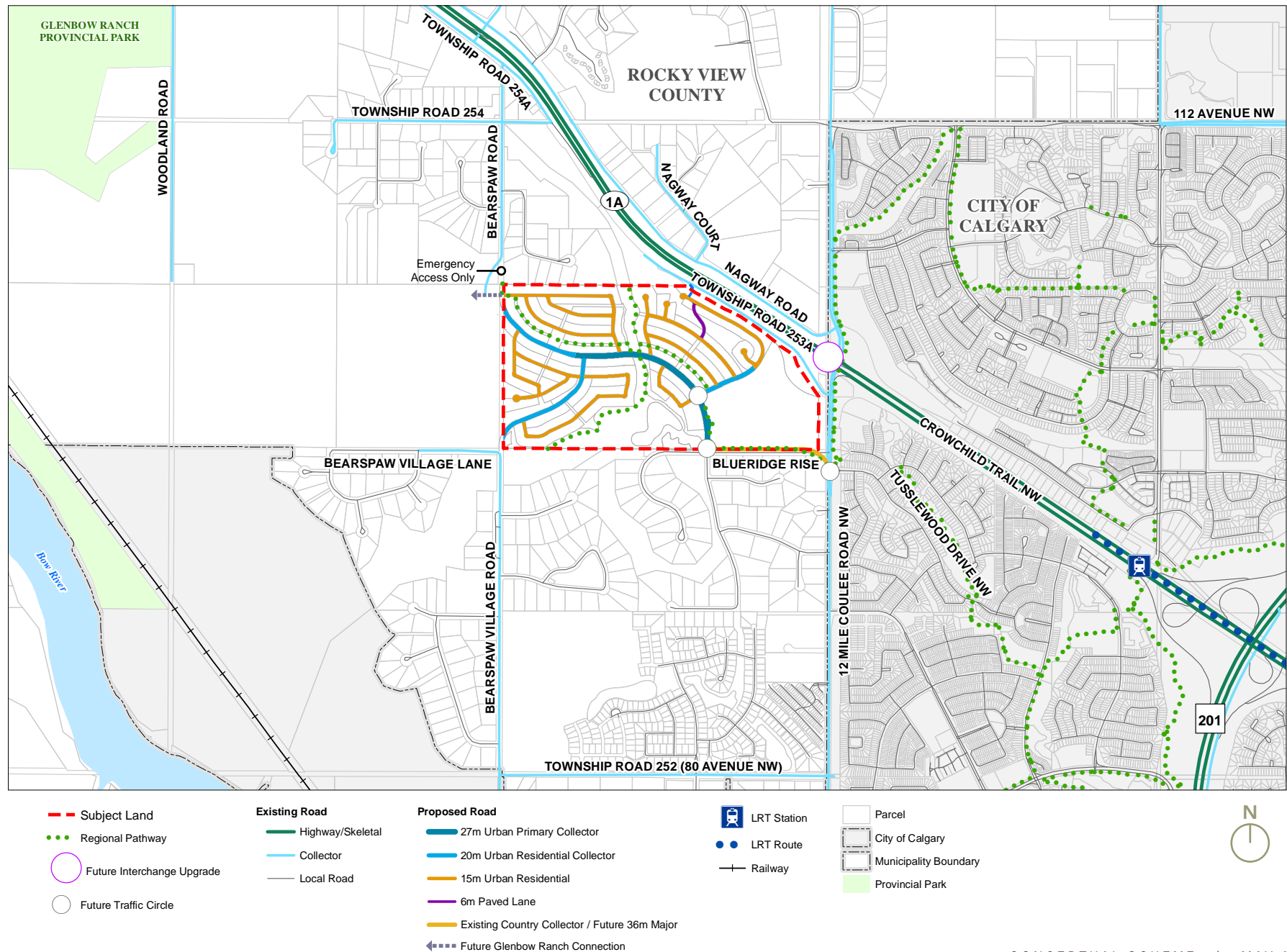


Figure 14 - Internal Transportation Plan

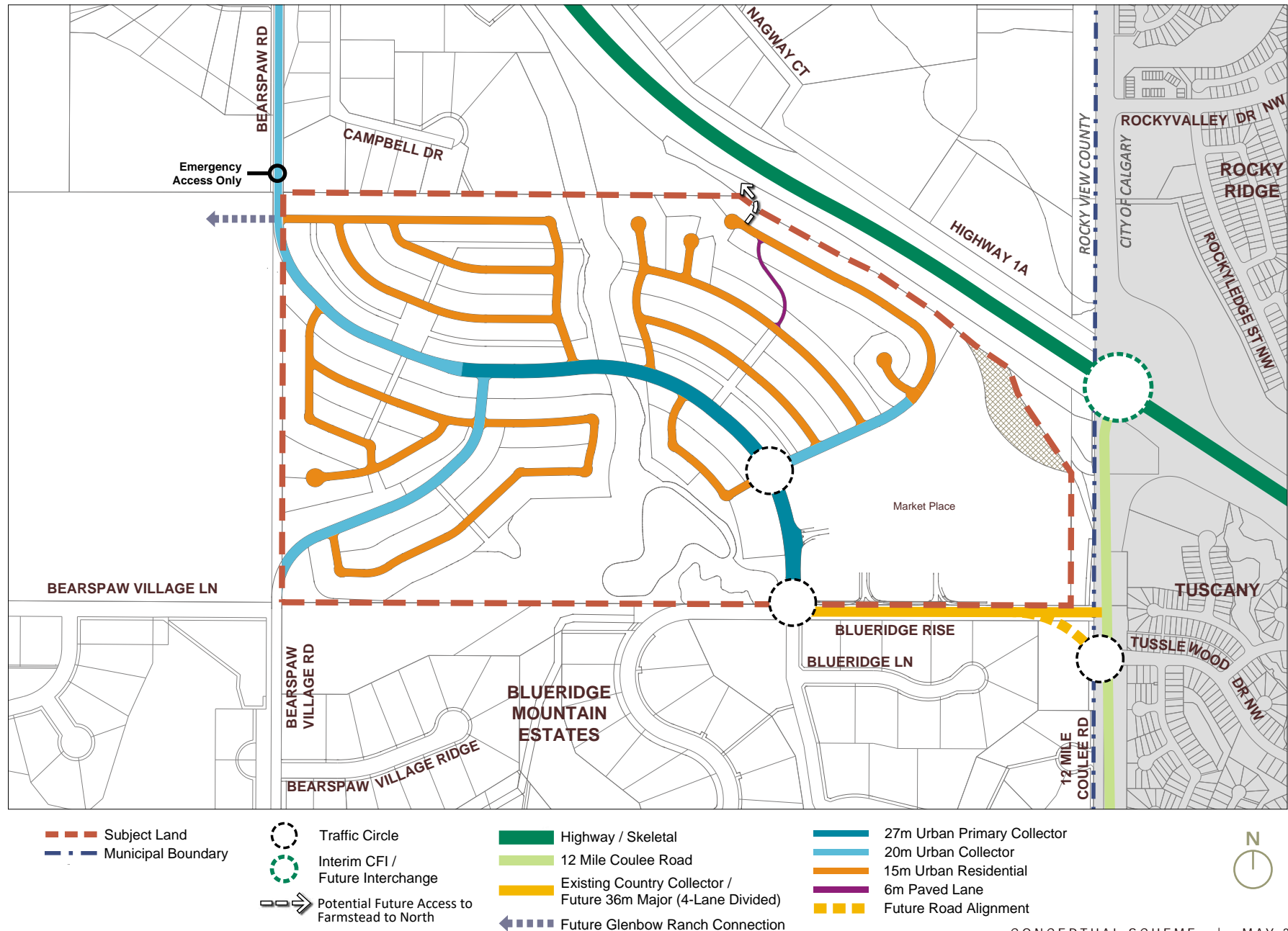


Figure 13 - Regional Transportation Plan

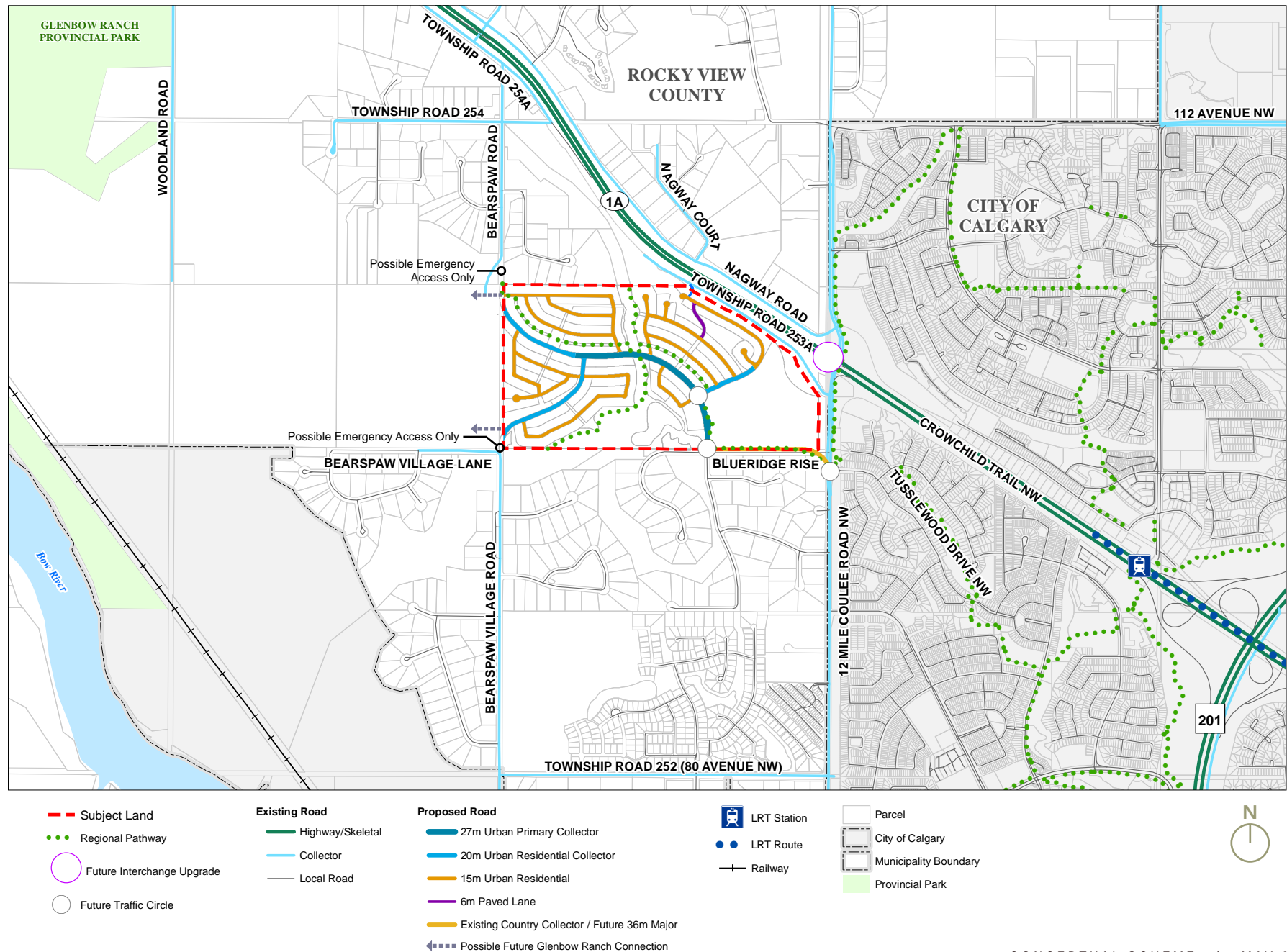
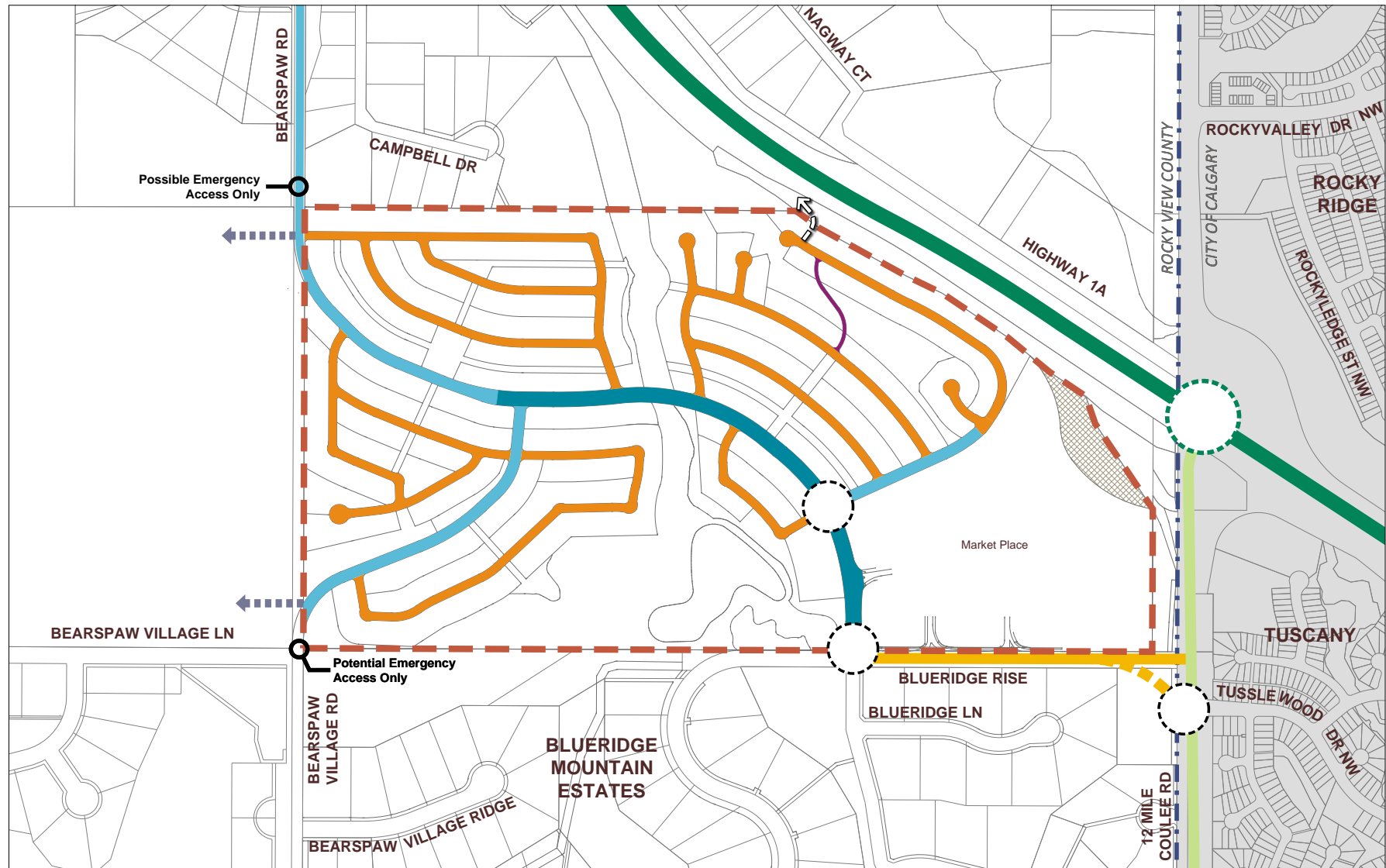


Figure 14 - Internal Transportation Plan



--- Subject Land
--- Municipal Boundary

○ Traffic Circle
○ Interim CFI / Future Interchange

➡ Potential Future Access to Farmstead to North

Highway / Skeletal
12 Mile Coulee Road
Existing Country Collector / Future 36m Major (4-Lane Divided)
Possible Future Glenbow Ranch Connection

27m Urban Primary Collector
20m Urban Collector
15m Urban Residential
6m Paved Lane
Future Road Alignment

