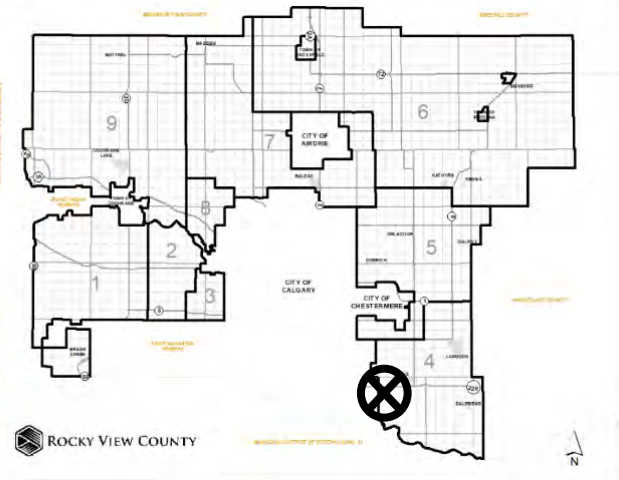


Location & Context

Redesignation Proposal

To amend the uses and regulations within Direct Control District 124, in order to facilitate the development of an agro-tourism operation.

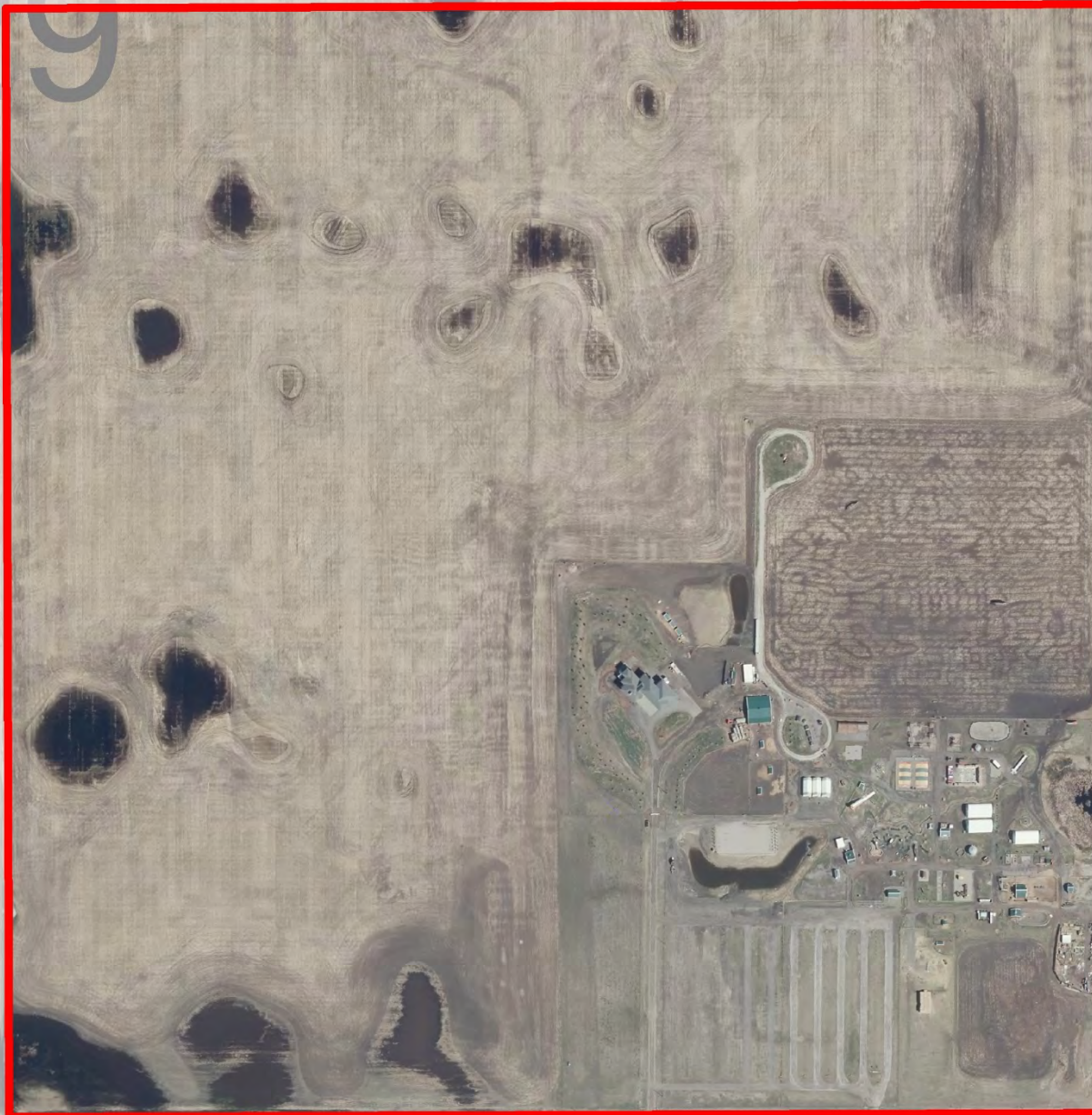


Division: 04
 Roll: 02329001
 File: PL20200045
 Printed: May 13, 2021
 Legal: A portion of SE-29-22-28-W04M

Development Proposal

Redesignation Proposal

To amend the uses and regulations within Direct Control District 124, in order to facilitate the development of an agro-tourism operation.



TWP RD 224

RGE RD 284



*Division: 04
Roll: 02329001
File: PL20200045
Printed: May 13, 2021
Legal: A portion of SE-29-22-
28-W04M*



Environmental

Redesignation Proposal

To amend the uses and regulations within Direct Control District 124, in order to facilitate the development of an agro-tourism operation.

-  Subject Lands
-  Contour - 2 meters
-  Riparian Setbacks
-  Alberta Wetland Inventory
-  Surface Water

Division: 04
 Roll: 02329001
 File: PL20200045
 Printed: May 13, 2021
 Legal: A portion of SE-29-22-28-W04M

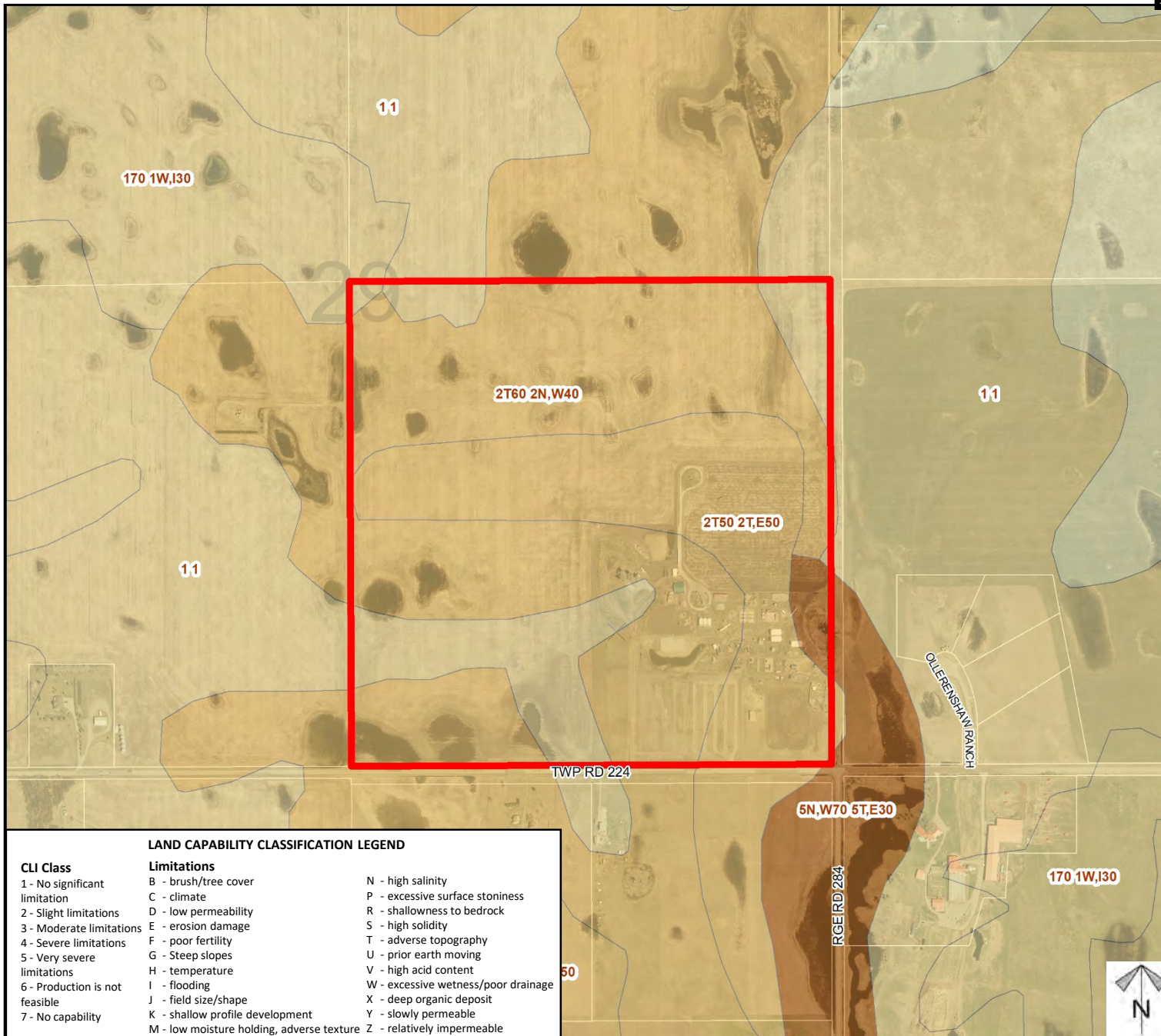




Soil Classifications

Redesignation Proposal

To amend the uses and regulations within Direct Control District 124, in order to facilitate the development of an agro-tourism operation.



LAND CAPABILITY CLASSIFICATION LEGEND

CLI Class

- 1 - No significant limitation
- 2 - Slight limitations
- 3 - Moderate limitations
- 4 - Severe limitations
- 5 - Very severe limitations
- 6 - Production is not feasible
- 7 - No capability

Limitations

- B - brush/tree cover
- C - climate
- D - low permeability
- E - erosion damage
- F - poor fertility
- G - Steep slopes
- H - temperature
- I - flooding
- J - field size/shape
- K - shallow profile development
- M - low moisture holding, adverse texture
- N - high salinity
- P - excessive surface stoniness
- R - shallowness to bedrock
- S - high solidity
- T - adverse topography
- U - prior earth moving
- V - high acid content
- W - excessive wetness/poor drainage
- X - deep organic deposit
- Y - slowly permeable
- Z - relatively impermeable

Division: 04

Roll: 02329001

File: PL20200045

Printed: May 13, 2021

Legal: A portion of SE-29-22-28-W04M

Redesignation Proposal

To amend the uses and regulations within Direct Control District 124, in order to facilitate the development of an agro-tourism operation.

Legend

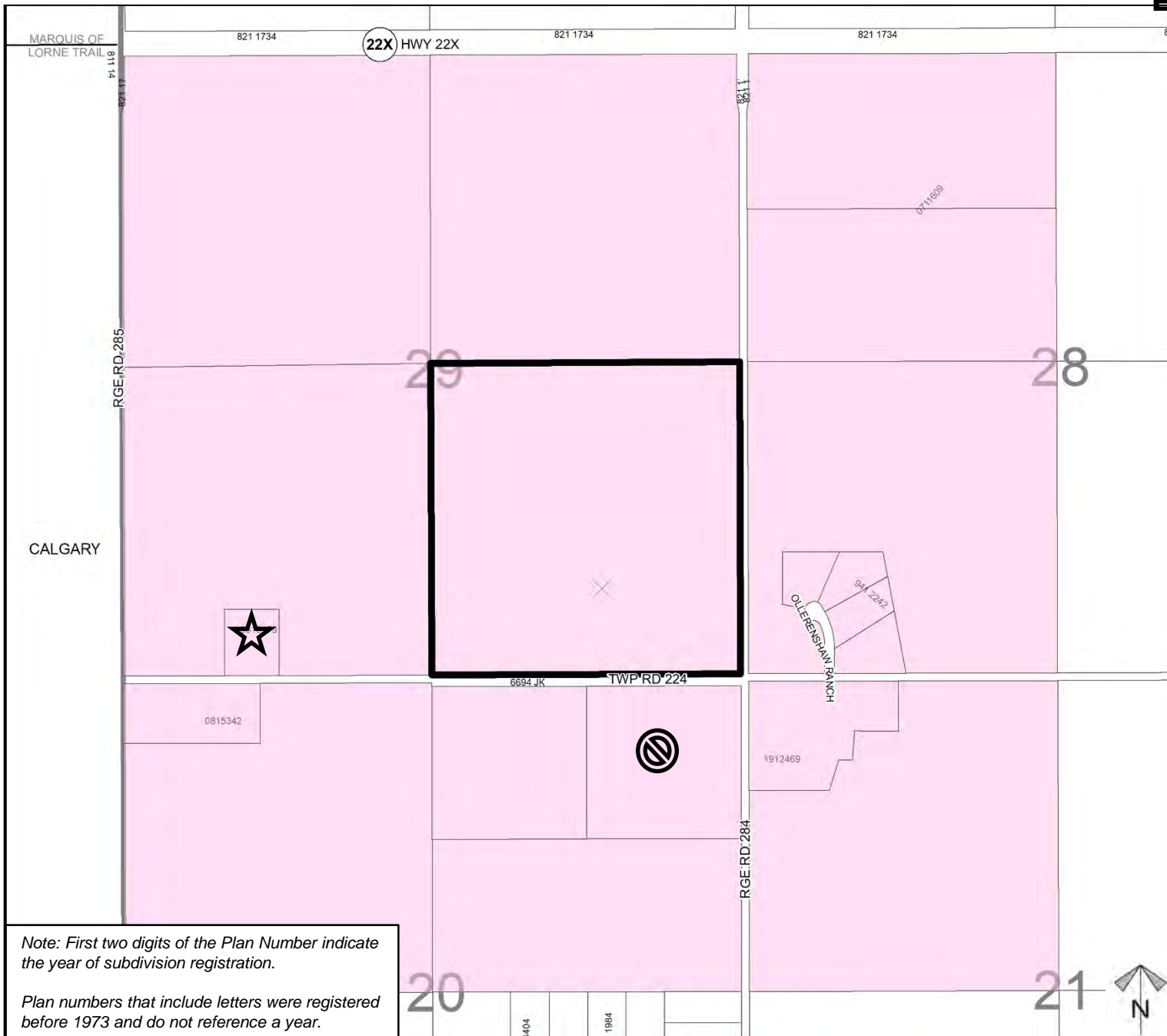
Support

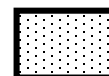


Opposition / Concern



Division: 04
Roll: 02329001
File: PL20200045
Printed: May 13, 2021
Legal: A portion of SE-29-22-
28-W04M



Schedule 'A'
Bylaw
C-8047-2020
Amendment**FROM**
 Direct Control
 District (DC 124)
**TO**
 Direct Control
 District Amended (DC 124)

DC 124 → DC 124
 (Amended)
 ± 32.99 ha (± 81.53 ac)

TWP RD 224

RGE RD 284



Division: 04
 Roll: 02329001
 File: PL20200045
 Printed: May 13, 2021
 Legal: A portion of SE-29-22-
 28-W04M