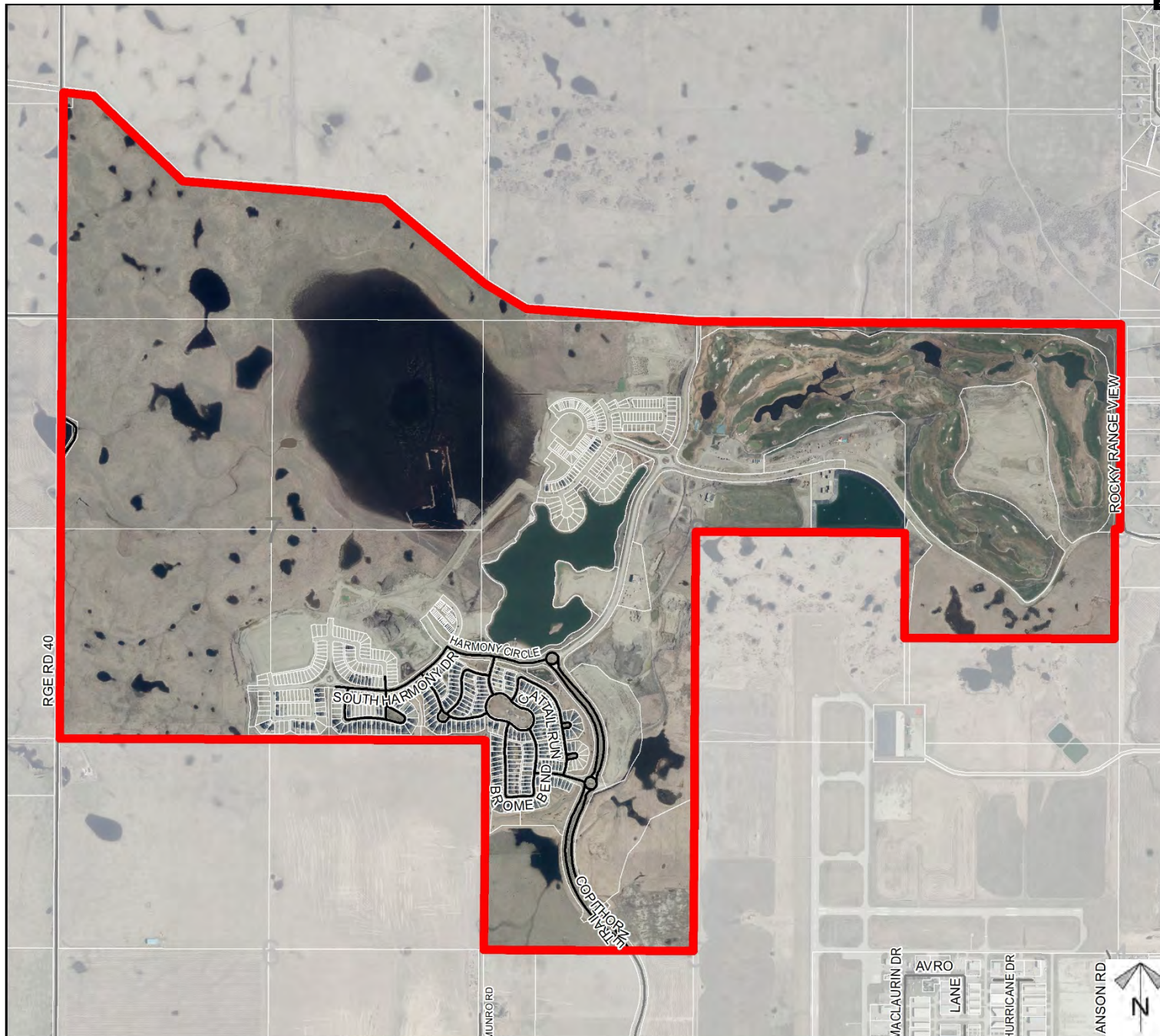




## Development Proposal

### Conceptual Scheme Amendment

Amendment to the Harmony Conceptual Scheme to update Sections 3.3 Land Ownership, 5.1.1 C Trail Network, 5.1.1 D Golf Course, 5.2.1 Settlement Pattern, 5.4.1 Community Village Centre, 5.5.3 Residential Considerations, 6.0 Transportation, 8.2.2 Staging/Phasing, and 12.0 Definitions.



Division: 2  
 Roll: Multiple  
 File: PL20200122  
 Legal: SW-18-25-03-W05M,  
 SEC 07-25-03-W05M,  
 W/NE-08-25-03-W05M,  
 NW-05-25-03-W05M,  
 SW/NW-09-25-03-W05M  
 Printed: October 2, 2020

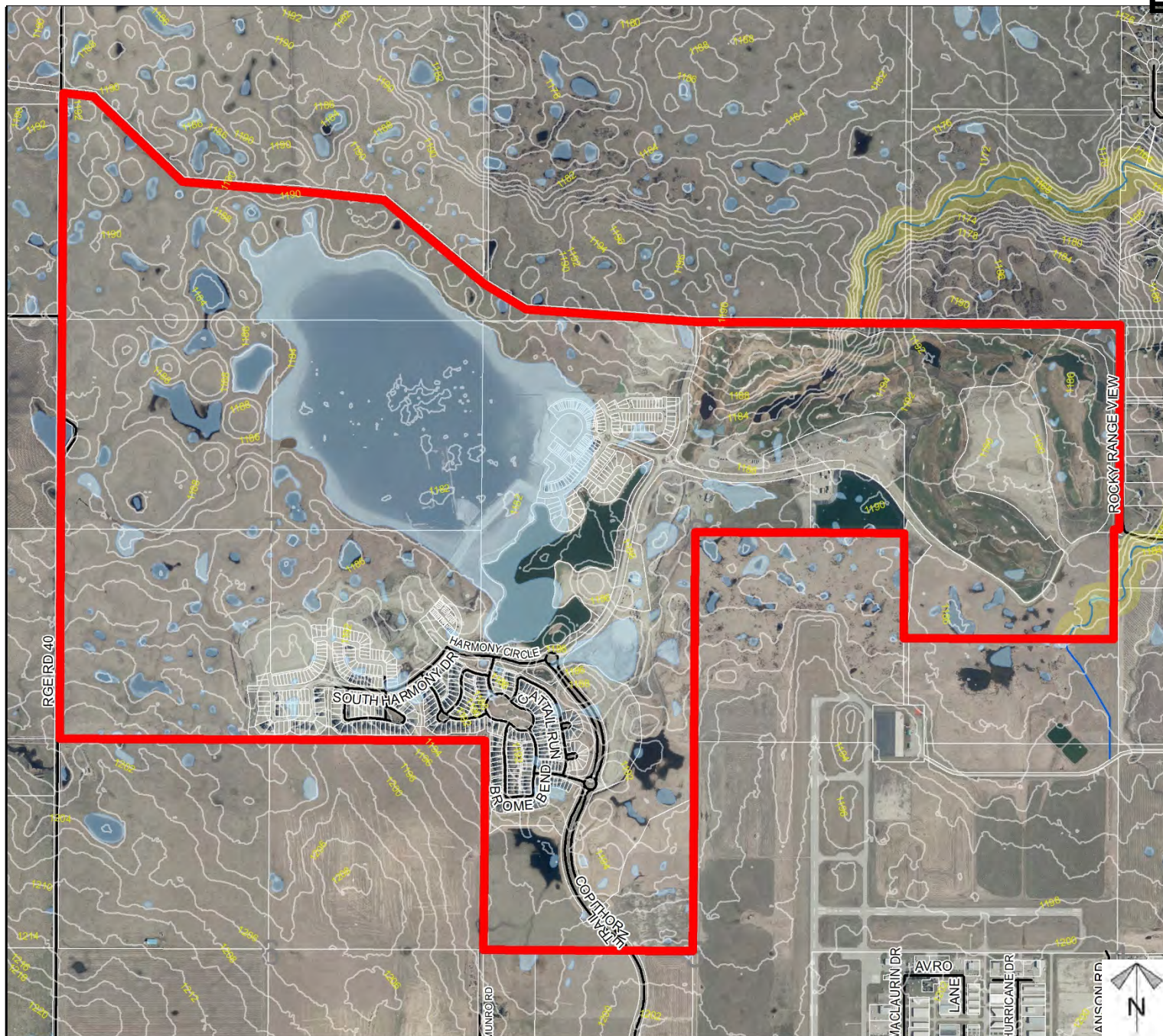
## Environmental

### Conceptual Scheme Amendment

Amendment to the Harmony Conceptual Scheme to update Sections 3.3 Land Ownership, 5.1.1 C Trail Network, 5.1.1 D Golf Course, 5.2.1 Settlement Pattern, 5.4.1 Community Village Centre, 5.5.3 Residential Considerations, 6.0 Transportation, 8.2.2 Staging/Phasing, and 12.0 Definitions.

-  Subject Lands
-  Contour - 2 meters
-  Riparian Setbacks
-  Alberta Wetland Inventory
-  Surface Water

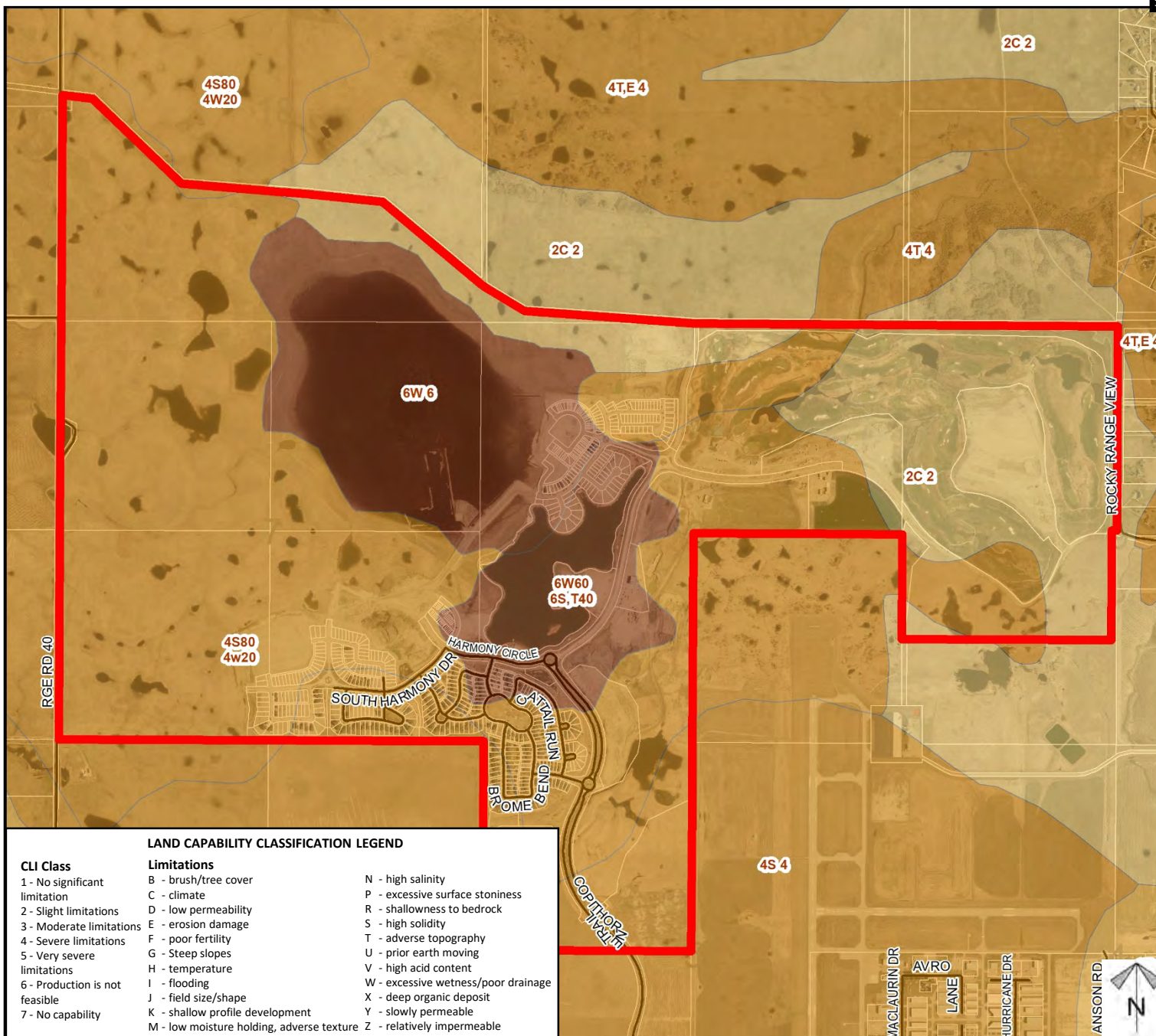
Division: 2  
 Roll: Multiple  
 File: PL20200122  
 Legal: SW-18-25-03-W05M,  
 SEC 07-25-03-W05M,  
 W/NE-08-25-03-W05M,  
 NW-05-25-03-W05M,  
 SW/NW-09-25-03-W05M  
 Printed: October 2, 2020



## Soil Classifications

### Conceptual Scheme Amendment

Amendment to the Harmony Conceptual Scheme to update Sections 3.3 Land Ownership, 5.1.1 C Trail Network, 5.1.1 D Golf Course, 5.2.1 Settlement Pattern, 5.4.1 Community Village Centre, 5.5.3 Residential Considerations, 6.0 Transportation, 8.2.2 Staging/Phasing, and 12.0 Definitions.



Division: 2  
 Roll: Multiple  
 File: PL20200122  
 Legal: SW-18-25-03-W05M,  
 SEC 07-25-03-W05M,  
 W/NE-08-25-03-W05M,  
 NW-05-25-03-W05M,  
 SW/NW-09-25-03-W05M  
 Printed: October 2, 2020

## Landowner Circulation Area

### Conceptual Scheme Amendment

Amendment to the Harmony Conceptual Scheme to update Sections 3.3 Land Ownership, 5.1.1 C Trail Network, 5.1.1 D Golf Course, 5.2.1 Settlement Pattern, 5.4.1 Community Village Centre, 5.5.3 Residential Considerations, 6.0 Transportation, 8.2.2 Staging/Phasing, and 12.0 Definitions.

### Legend

Support



Non-Support



Division: 2  
 Roll: Multiple  
 File: PL20200122  
 Legal: SW-18-25-03-W05M,  
 SEC 07-25-03-W05M,  
 W/NE-08-25-03-W05M,  
 NW-05-25-03-W05M,  
 SW/NW-09-25-03-W05M  
 Printed: October 2, 2020

Note: First two digits of the Plan Number indicate the year of subdivision registration.

Plan numbers that include letters were registered before 1973 and do not reference a year.

