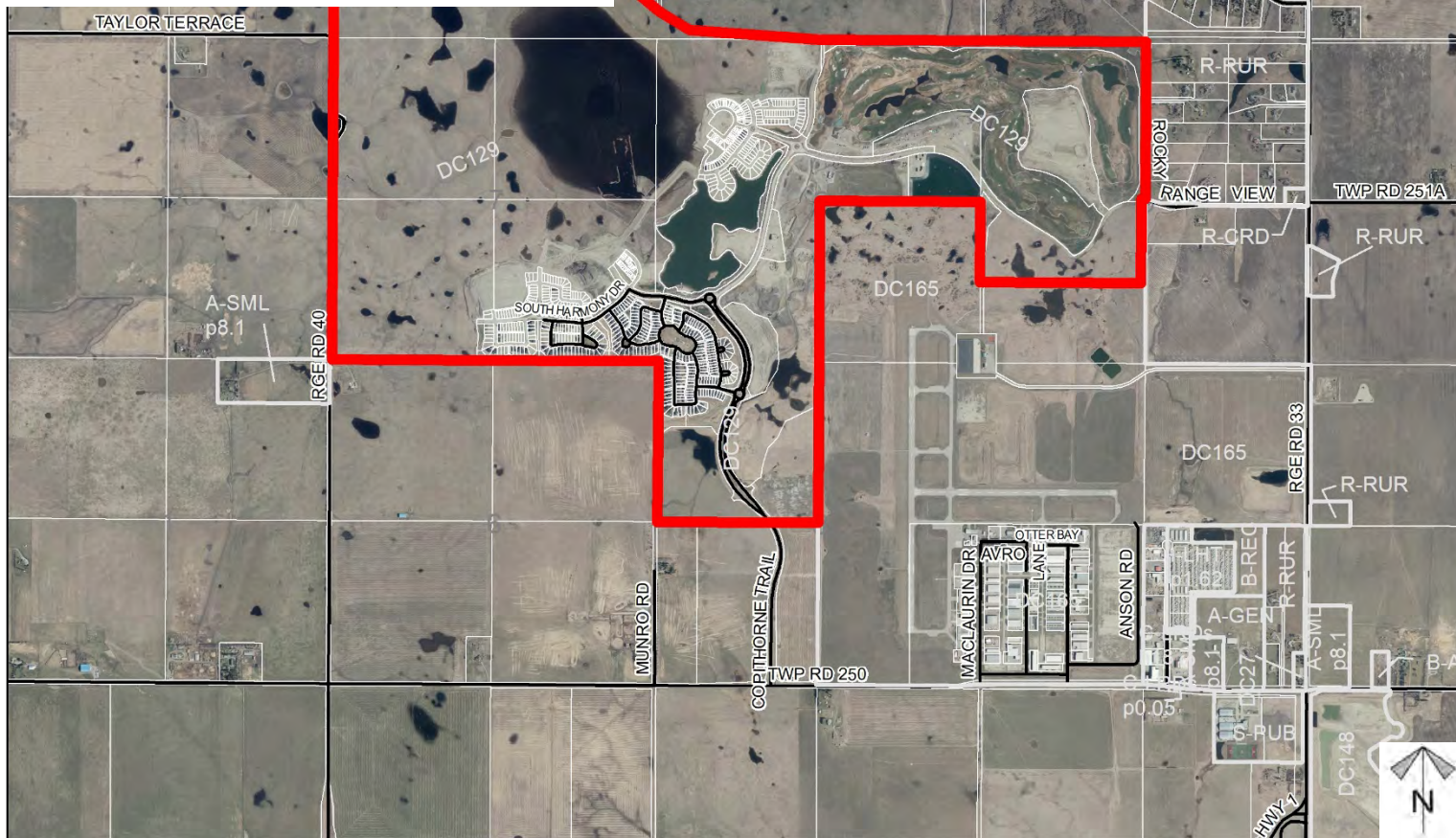
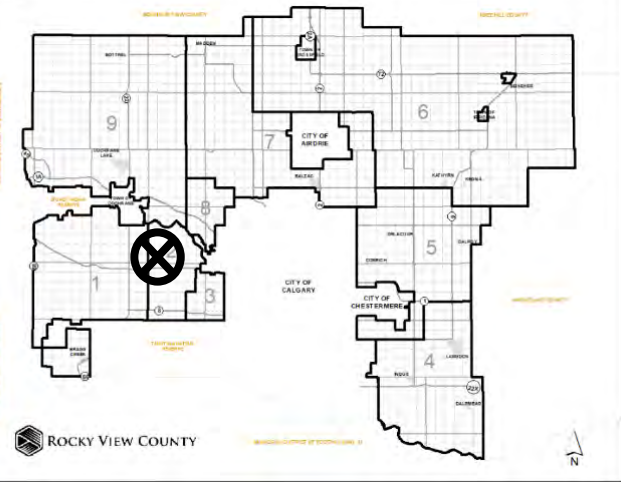


## Location & Context

### Conceptual Scheme Amendment

Amendment to the Harmony Conceptual Scheme to update Sections 3.3 Land Ownership, 5.1.1 C Trail Network, 5.1.1 D Golf Course, 5.2.1 Settlement Pattern, 5.4.1 Community Village Centre, 5.5.3 Residential Considerations, 6.0 Transportation, 8.2.2 Staging/Phasing, and 12.0 Definitions.

Division: 2  
Roll: Multiple  
File: PL20200125  
Legal: SW-18-25-03-W05M,  
SEC 07-25-03-W05M,  
W/NE-08-25-03-W05M,  
NW-05-25-03-W05M,  
SW/NW-09-25-03-W05M  
Printed: October 2, 2020

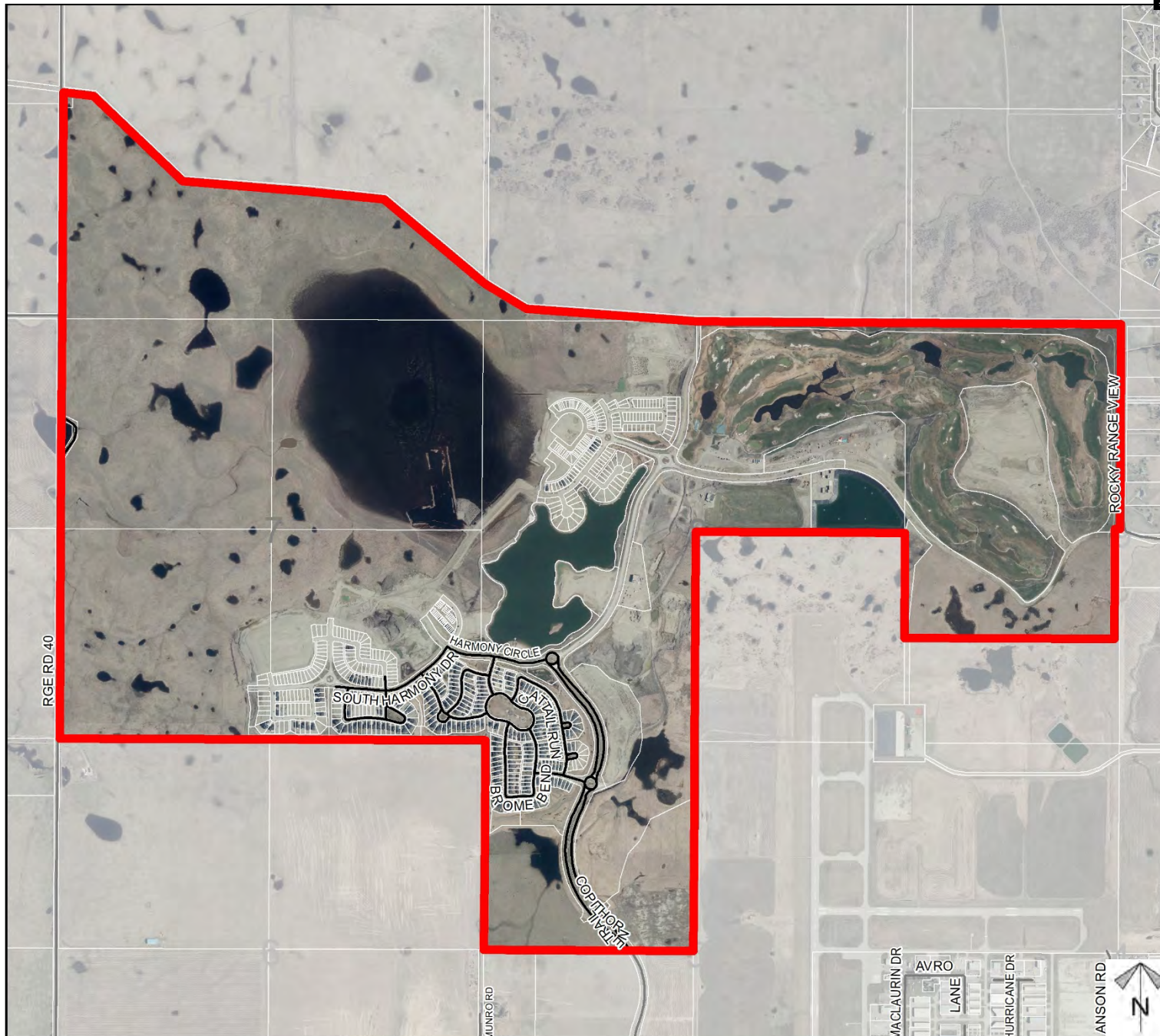




## Development Proposal

### Conceptual Scheme Amendment

Amendment to the Harmony Conceptual Scheme to update Sections 3.3 Land Ownership, 5.1.1 C Trail Network, 5.1.1 D Golf Course, 5.2.1 Settlement Pattern, 5.4.1 Community Village Centre, 5.5.3 Residential Considerations, 6.0 Transportation, 8.2.2 Staging/Phasing, and 12.0 Definitions.



Division: 2  
 Roll: Multiple  
 File: PL20200125  
 Legal: SW-18-25-03-W05M,  
 SEC 07-25-03-W05M,  
 W/NE-08-25-03-W05M,  
 NW-05-25-03-W05M,  
 SW/NW-09-25-03-W05M  
 Printed: October 2, 2020



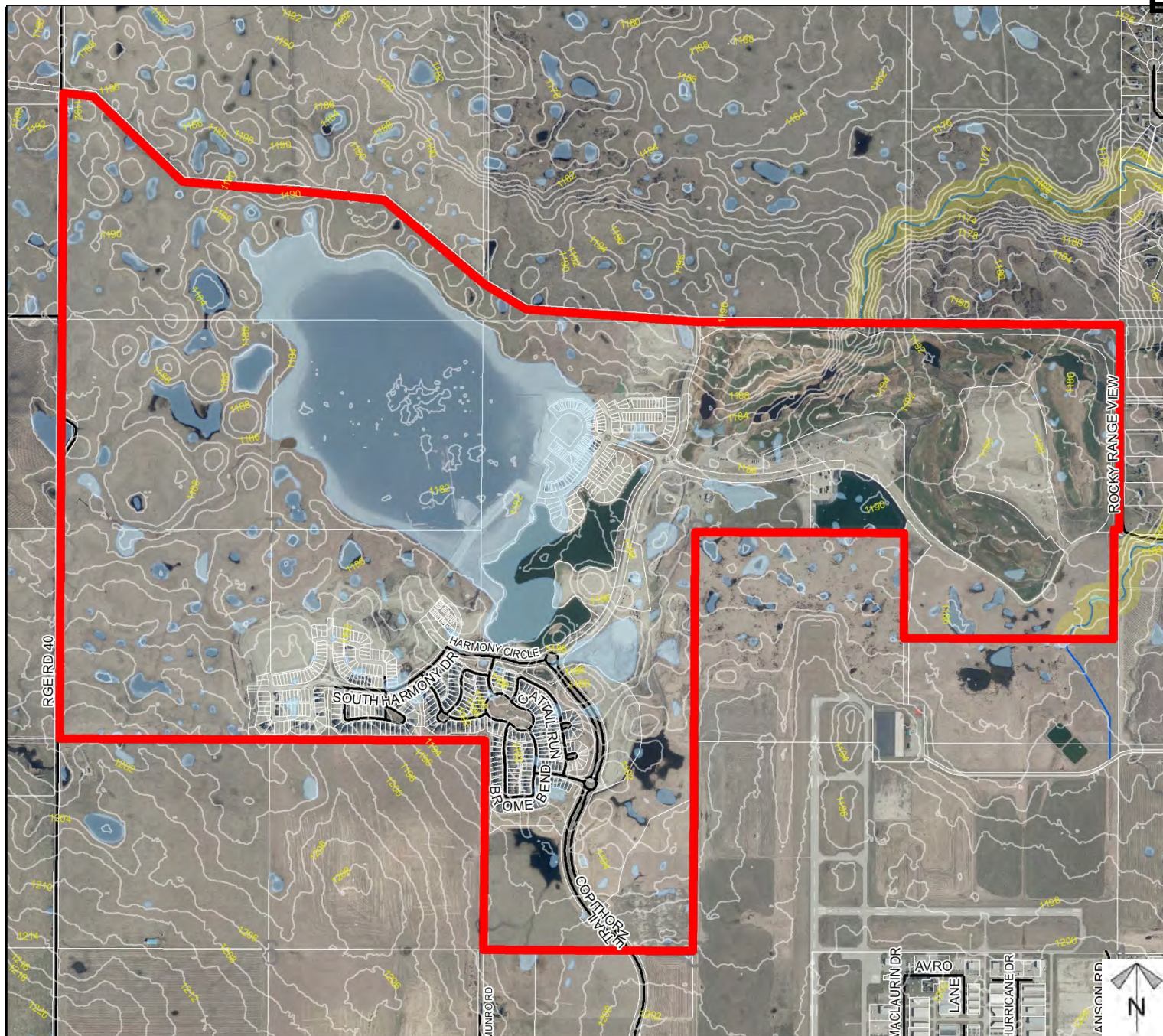
## Environmental

### Conceptual Scheme Amendment

Amendment to the Harmony Conceptual Scheme to update Sections 3.3 Land Ownership, 5.1.1 C Trail Network, 5.1.1 D Golf Course, 5.2.1 Settlement Pattern, 5.4.1 Community Village Centre, 5.5.3 Residential Considerations, 6.0 Transportation, 8.2.2 Staging/Phasing, and 12.0 Definitions.

-  Subject Lands
-  Contour - 2 meters
-  Riparian Setbacks
-  Alberta Wetland Inventory
-  Surface Water

Division: 2  
 Roll: Multiple  
 File: PL20200125  
 Legal: SW-18-25-03-W05M,  
 SEC 07-25-03-W05M,  
 W/NE-08-25-03-W05M,  
 NW-05-25-03-W05M,  
 SW/NW-09-25-03-W05M  
 Printed: October 2, 2020

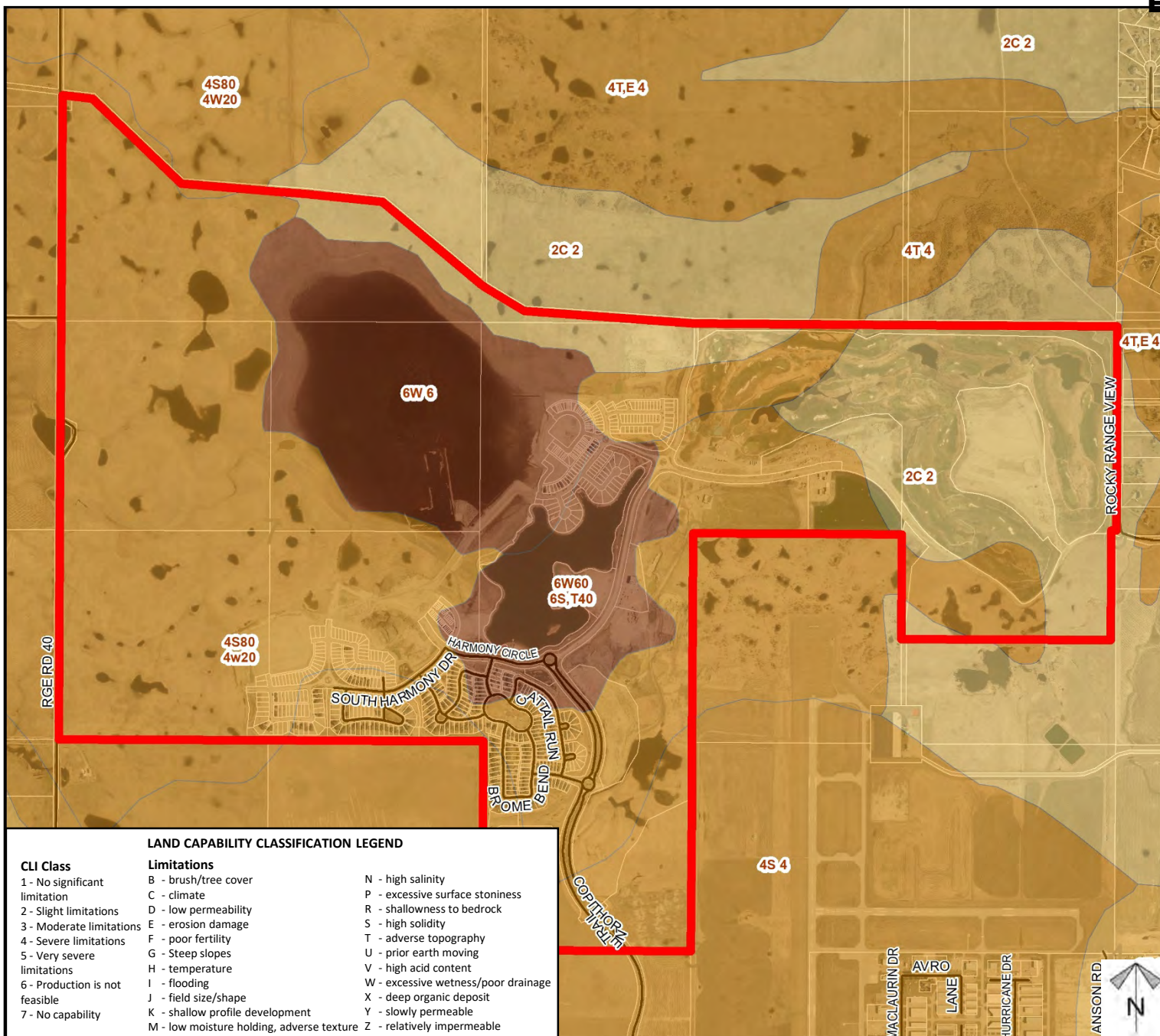




## Soil Classifications

### Conceptual Scheme Amendment

Amendment to the Harmony Conceptual Scheme to update Sections 3.3 Land Ownership, 5.1.1 C Trail Network, 5.1.1 D Golf Course, 5.2.1 Settlement Pattern, 5.4.1 Community Village Centre, 5.5.3 Residential Considerations, 6.0 Transportation, 8.2.2 Staging/Phasing, and 12.0 Definitions.



Division: 2  
 Roll: Multiple  
 File: PL20200125  
 Legal: SW-18-25-03-W05M,  
 SEC 07-25-03-W05M,  
 W/NE-08-25-03-W05M,  
 NW-05-25-03-W05M,  
 SW/NW-09-25-03-W05M  
 Printed: October 2, 2020

## Landowner Circulation Area

### Conceptual Scheme Amendment

Amendment to the Harmony Conceptual Scheme to update Sections 3.3 Land Ownership, 5.1.1 C Trail Network, 5.1.1 D Golf Course, 5.2.1 Settlement Pattern, 5.4.1 Community Village Centre, 5.5.3 Residential Considerations, 6.0 Transportation, 8.2.2 Staging/Phasing, and 12.0 Definitions.

### Legend

Support



Non-Support



Division: 2

Roll: Multiple

File: PL20200125

Legal: SW-18-25-03-W05M,

SEC 07-25-03-W05M,

W/NE-08-25-03-W05M,

NW-05-25-03-W05M,

SW/NW-09-25-03-W05M

Printed: October 2, 2020

Note: First two digits of the Plan Number indicate the year of subdivision registration.

Plan numbers that include letters were registered before 1973 and do not reference a year.

