

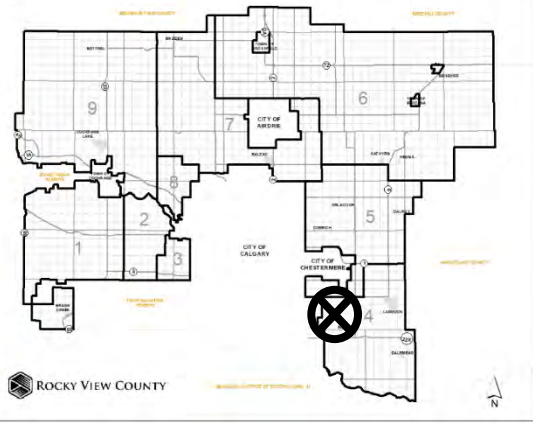
Location & Context

Redesignation Proposal

To redesignate the subject land from Agricultural, General District (A-GEN) to Industrial, Light District (I-LHY), in order to facilitate the development of a hauling and landscaping business.

Division: 4
Roll: 02329001
File: PL20200086
Legal: SW-15-23-28-W04M

Printed: Sept 16, 2020



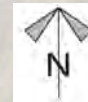
Development Proposal

Redesignation Proposal

To redesignate the subject land from Agricultural, General District (A-GEN) to Industrial, Light District (I-LHY), in order to facilitate the development of a hauling and landscaping business.

Subject Land
(± 19.97 acres)
A-GEN → I-HVY

RGE RD 283



Division: 4
Roll: 02329001
File: PL20200086
Legal: SW-15-23-28-W04M

Printed: Sept 16, 2020

Environmental

Redesignation Proposal

To redesignate the subject land from Agricultural, General District (A-GEN) to Industrial, Light District (I-LHY), in order to facilitate the development of a hauling and landscaping business.



- Subject Lands
- Contour - 2 meters
- Riparian Setbacks
- Alberta Wetland Inventory
- Surface Water

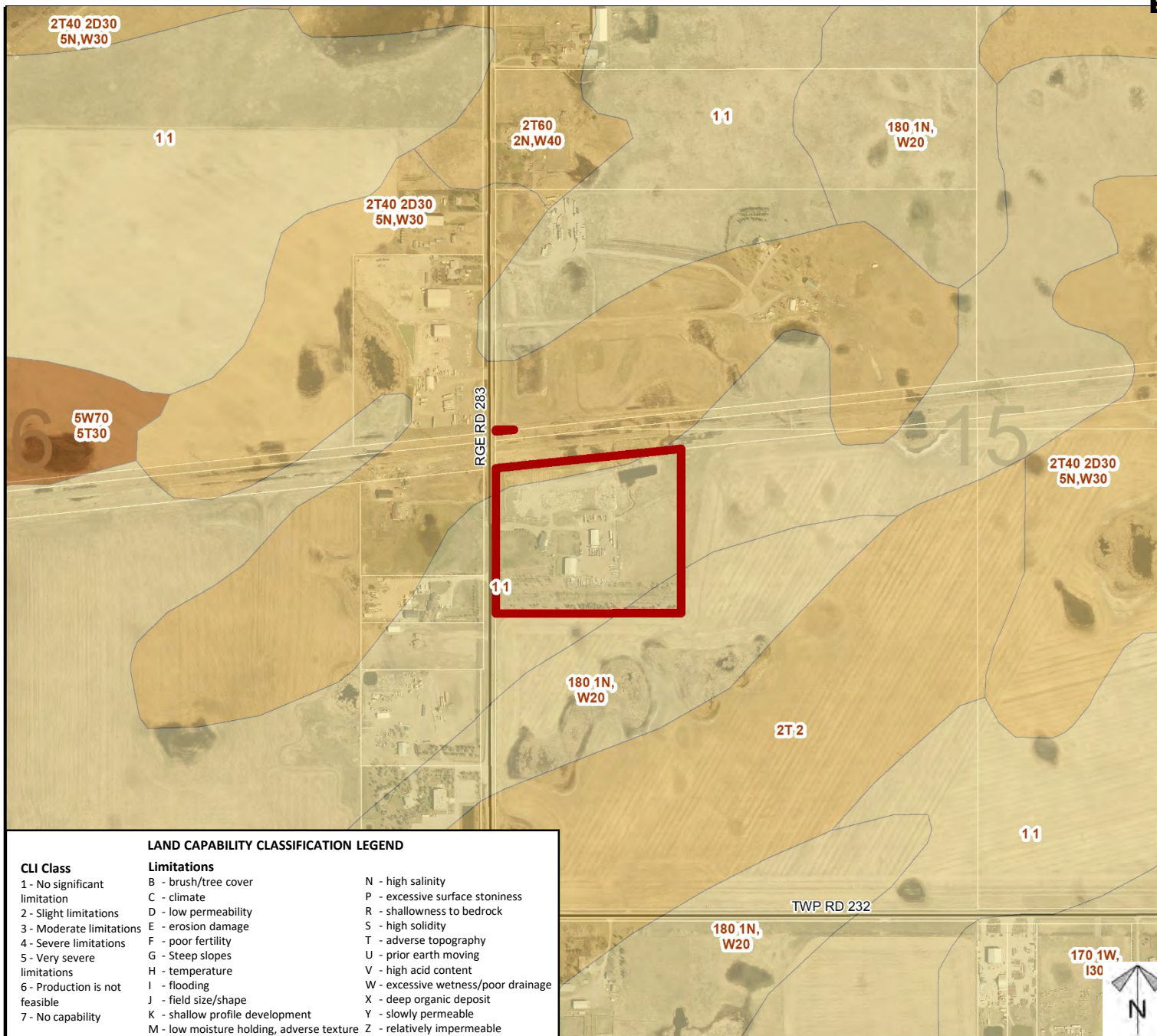
Division: 4
 Roll: 02329001
 File: PL20200086
 Legal: SW-15-23-28-W04M

Printed: Sept 16, 2020

Soil Classifications

Redesignation Proposal

To redesignate the subject land from Agricultural, General District (A-GEN) to Industrial, Light District (I-LHY), in order to facilitate the development of a hauling and landscaping business.



Division: 4
Roll: 02329001
File: PL20200086
Legal: SW-15-23-28-W04M

Printed: Sept 16, 2020

Redesignation Proposal

Legend



Printed: Sept 16, 2020

Plan numbers that include letters were registered before 1973 and do not reference a year.

