

Division: 05
Roll: 03332014/2017
File: PL20190131
Printed: April 23, 2021
Legal: A portion of SE-32-23-
28-W04M





Figure 12: Development Cells within the Plan Area

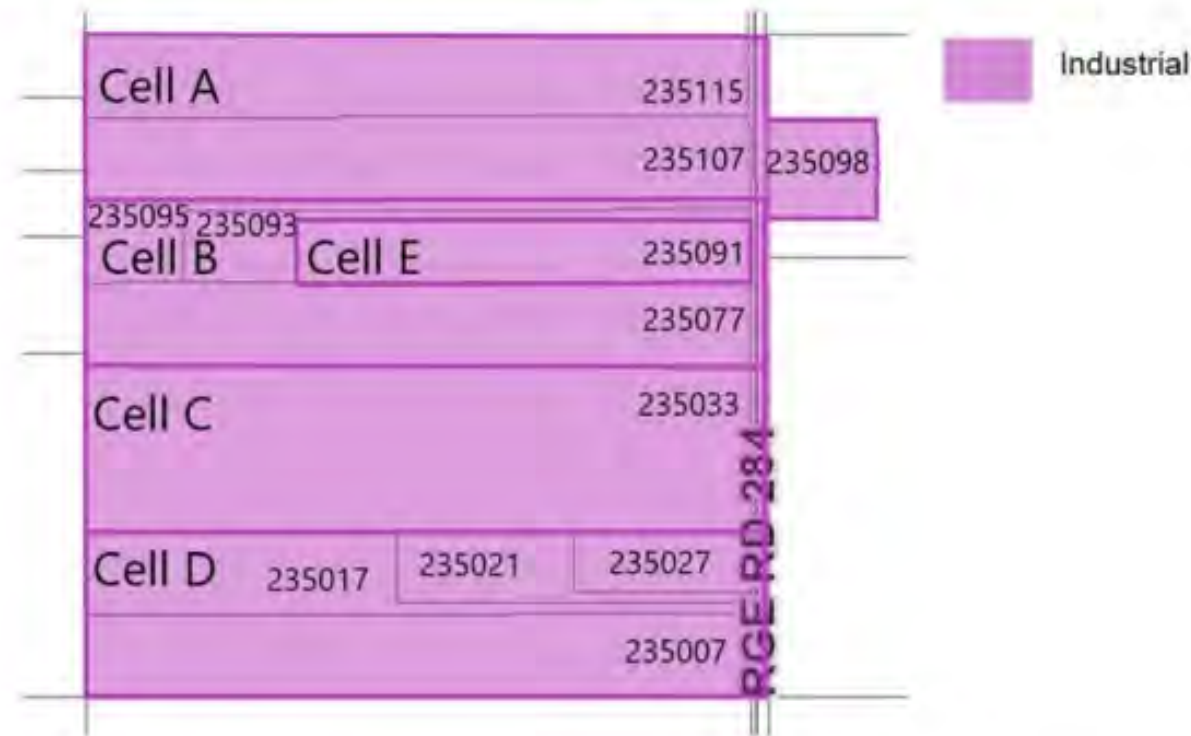


Table 2: Development Cells Summary, provide a description of the Conceptual Scheme's Development Cells.

Conceptual Scheme Proposal:

To adopt a conceptual scheme that provides a policy framework to guide future redesignation, subdivision, and development proposals within SE 1/4 32-23-28 W4M and Lot 1, Plan 0111882.



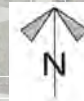
Development Proposal

April 30, 2019:
Council approved
Industrial, Heavy
District & directed
that a Conceptual
Scheme be
prepared in
accordance with the
Janet ASP.

I-HVY
± 4.10 ha
(± 10.12 ac)

RGE RD 284

Division: 05
Roll: 03332014/2017
File: PL20190131
Printed: April 23, 2021
Legal: A portion of SE-32-23-
28-W04M





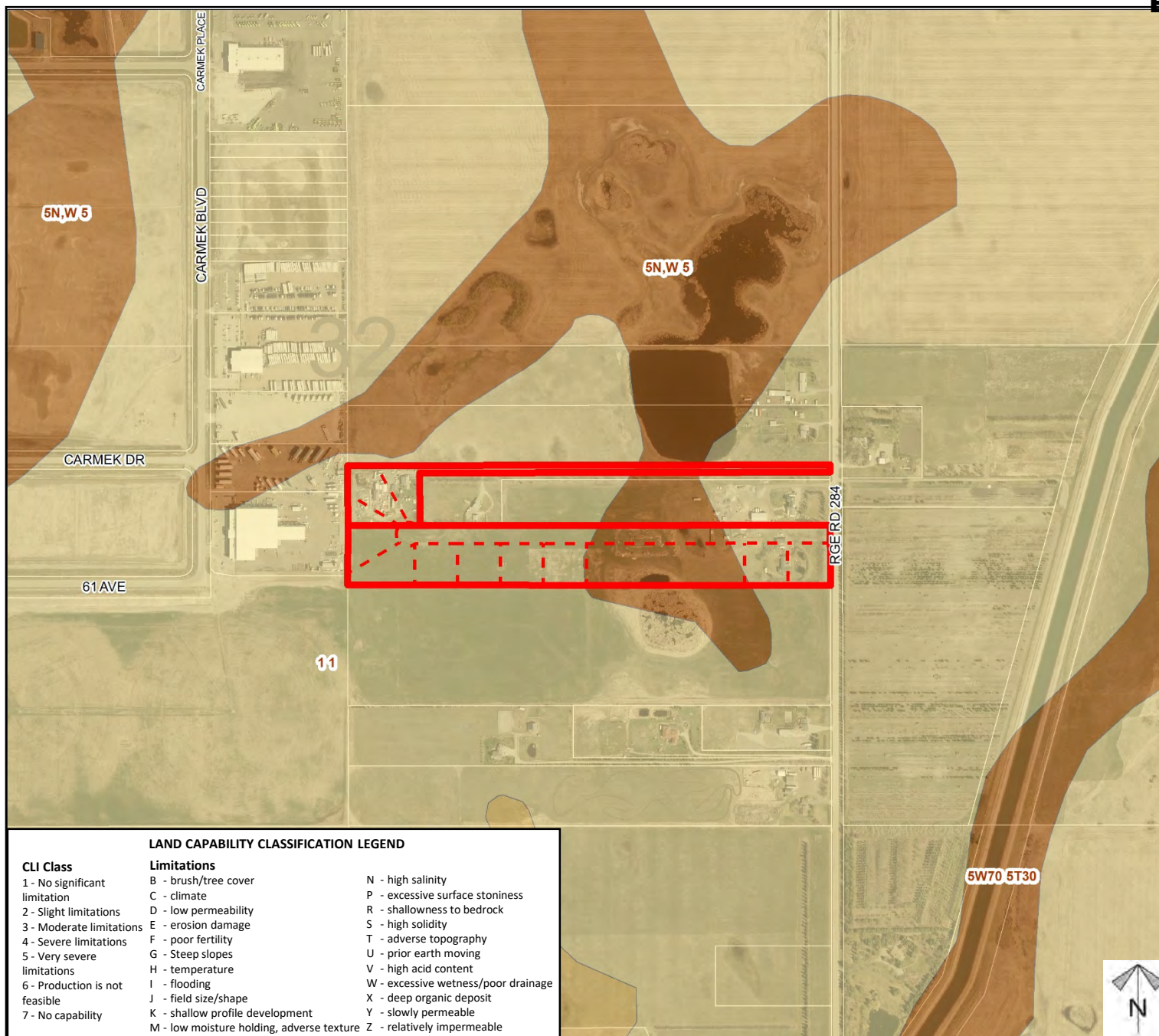
Environmental



- Subject Lands
- Contour - 2 meters
- Riparian Setbacks
- Alberta Wetland Inventory
- Surface Water

Division: 05
 Roll: 03332014/2017
 File: PL20190131
 Printed: April 23, 2021
 Legal: A portion of SE-32-23-28-W04M



Soil
Classifications

LAND CAPABILITY CLASSIFICATION LEGEND

CLI Class

- 1 - No significant limitation
- 2 - Slight limitations
- 3 - Moderate limitations
- 4 - Severe limitations
- 5 - Very severe limitations
- 6 - Production is not feasible
- 7 - No capability

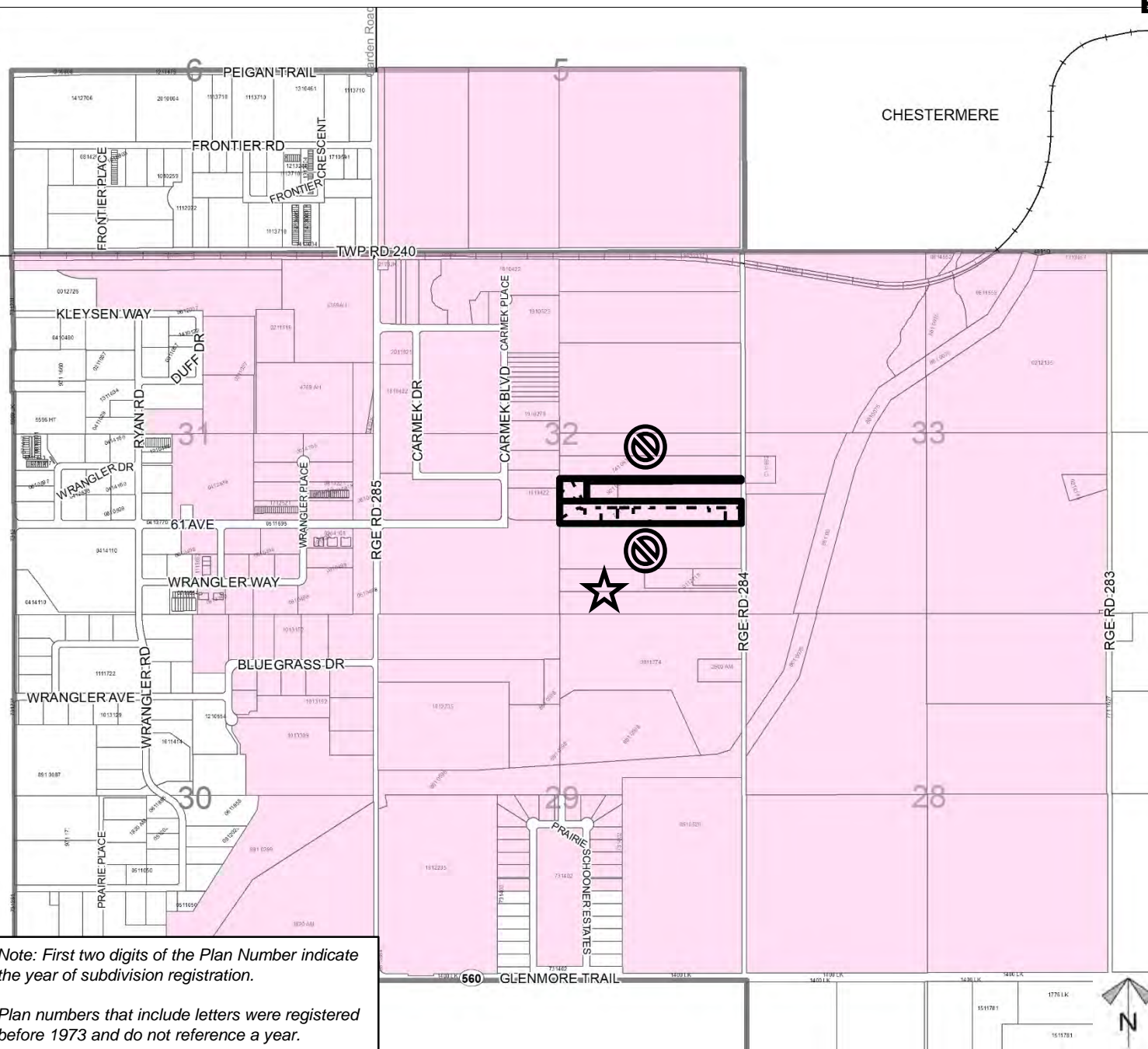
Limitations

- B - brush/tree cover
- C - climate
- D - low permeability
- E - erosion damage
- F - poor fertility
- G - Steep slopes
- H - temperature
- I - flooding
- J - field size/shape
- K - shallow profile development
- M - low moisture holding, adverse texture
- N - high salinity
- P - excessive surface stoniness
- R - shallowness to bedrock
- S - high solidity
- T - adverse topography
- U - prior earth moving
- V - high acid content
- W - excessive wetness/poor drainage
- X - deep organic deposit
- Y - slowly permeable
- Z - relatively impermeable

Division: 05
 Roll: 03332014/2017
 File: PL20190131
 Printed: April 23, 2021
 Legal: A portion of SE-32-23-28-W04M



Landowner Circulation Area



Note: First two digits of the Plan Number indicate the year of subdivision registration.

Plan numbers that include letters were registered before 1973 and do not reference a year.

Legend

Support



Opposition



Division: 05

Roll: 03332014/2017

File: PL20190131

Printed: April 23, 2021

Legal: A portion of SE-32-23-28-W04M