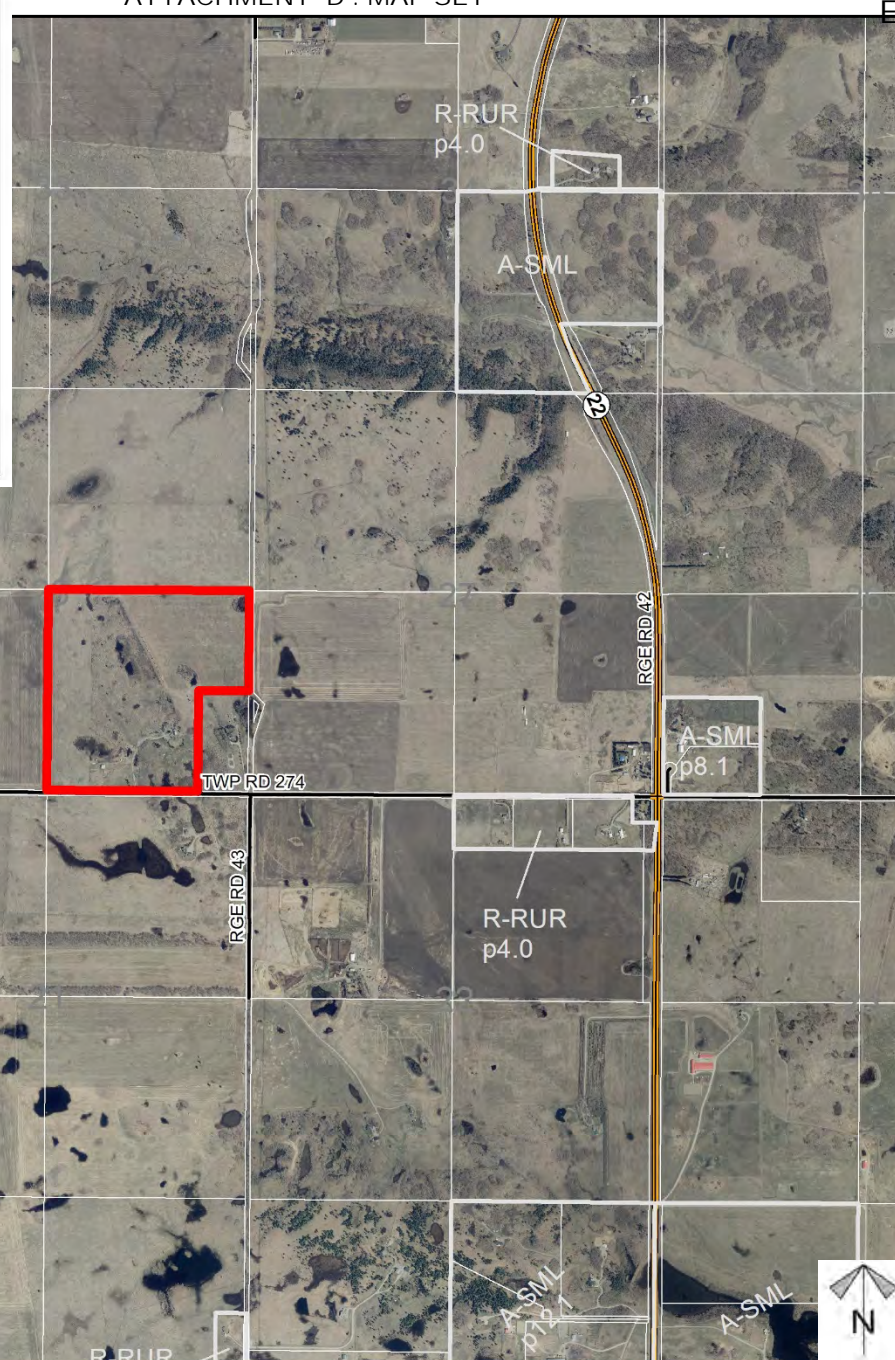
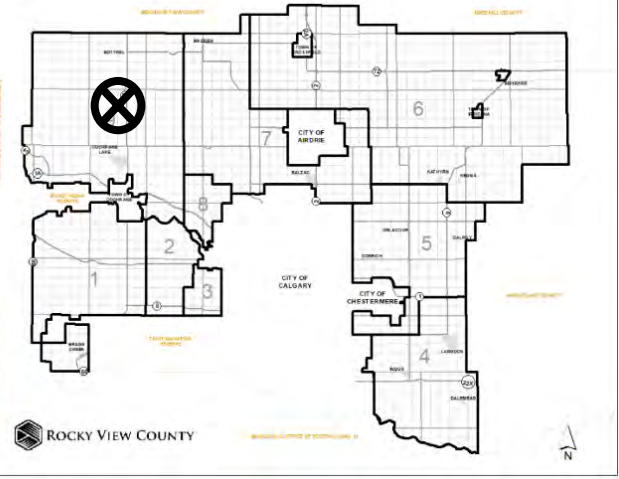


Location & Context

Redesignation Proposal

To redesignate the subject lands from Agriculture General District to Agriculture Small Parcel District to facilitate the creation of a 70.0 acre parcel (Lot 1) with a 70.0 acre remainder (Lot 2).

Division: 9
Roll: 07828003
File: PL20200118
Printed: September 23, 2020
Legal: SE-28-27-04-W05M



Development Proposal

Redesignation Proposal

To redesignate the subject lands from Agriculture General District to Agriculture Small Parcel District to facilitate the creation of a 70.0 acre parcel (Lot 1) with a 70.0 acre remainder (Lot 2).

A-GEN → A-SML ±
28.33 ha
(± 70.00 ac)
Lot 2

A-GEN → A-SML
± 28.33 ha
(± 70.00 ac)
Lot 1

TWP RD 274

RGE RD 43



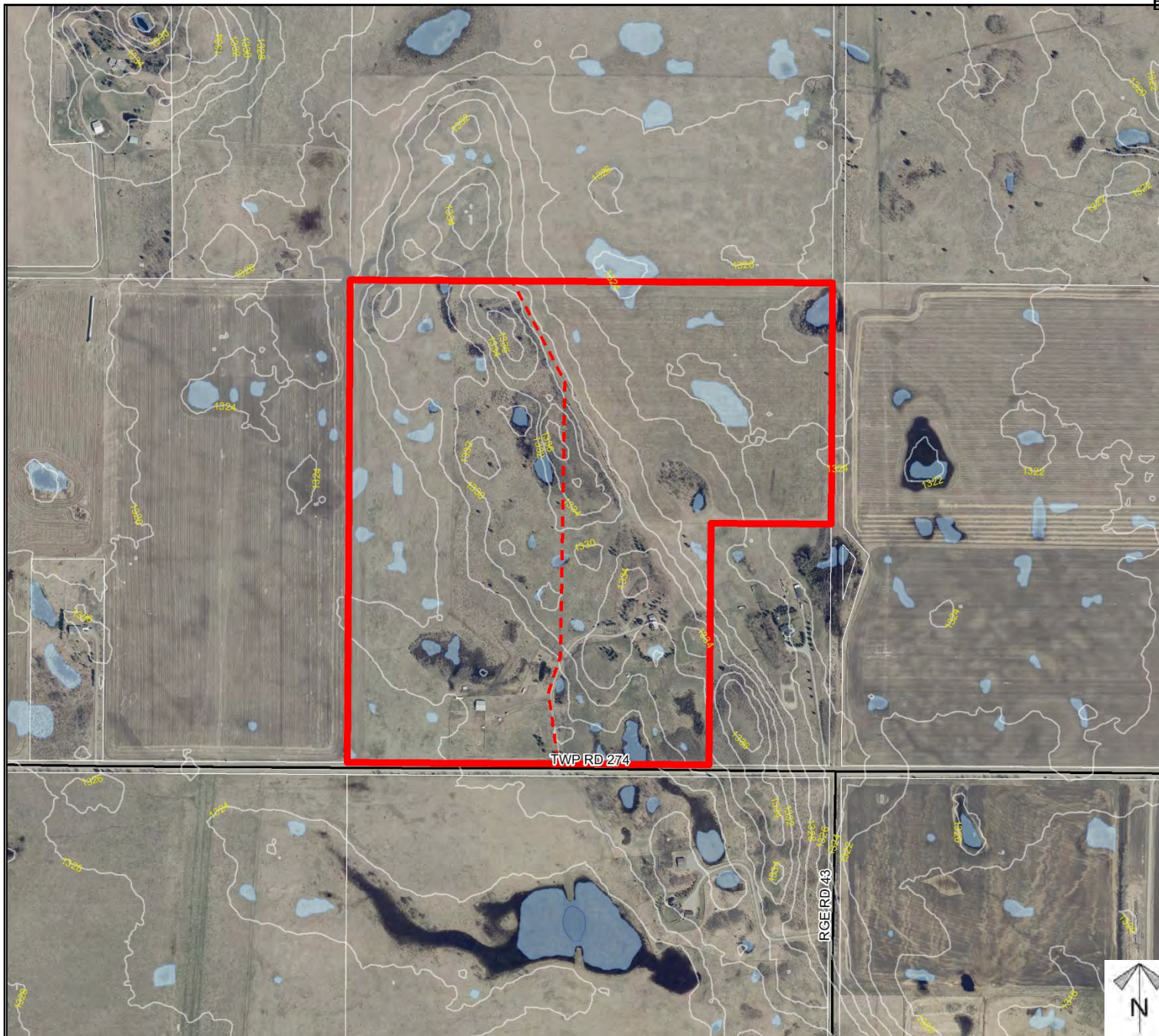
Division: 9
Roll: 07828003
File: PL20200118
Printed: September 23, 2020
Legal: SE-28-27-04-W05M

Environmental

Redesignation Proposal

To redesignate the subject lands from Agriculture General District to Agriculture Small Parcel District to facilitate the creation of a 70.0 acre parcel (Lot 1) with a 70.0 acre remainder (Lot 2).

-  Subject Lands
-  Contour - 2 meters
-  Riparian Setbacks
-  Alberta Wetland Inventory
-  Surface Water

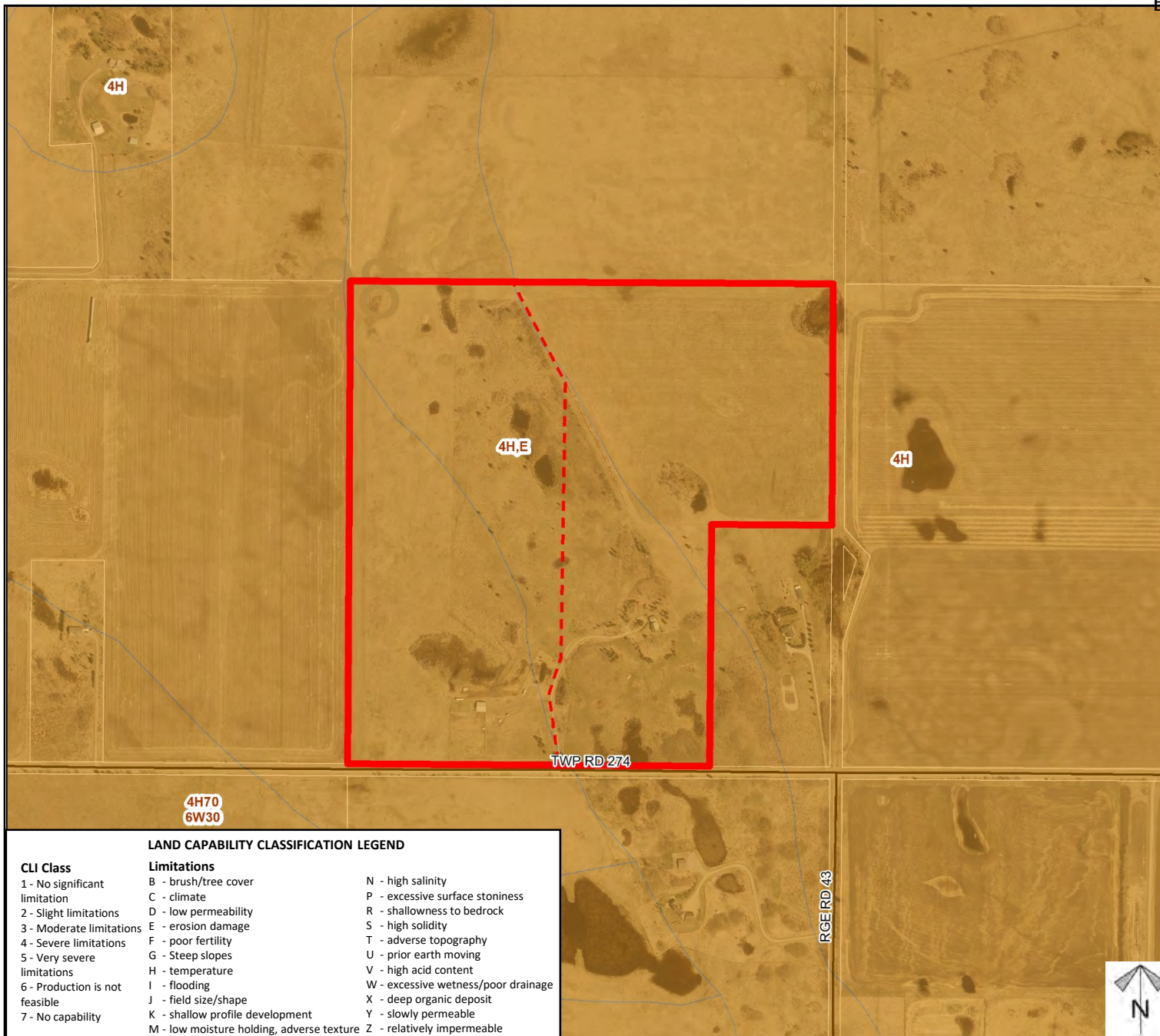


Division: 9
 Roll: 07828003
 File: PL20200118
 Printed: September 23, 2020
 Legal: SE-28-27-04-W05M

Soil Classifications

Redesignation Proposal

To redesignate the subject lands from Agriculture General District to Agriculture Small Parcel District to facilitate the creation of a 70.0 acre parcel (Lot 1) with a 70.0 acre remainder (Lot 2).



Division: 9
 Roll: 07828003
 File: PL20200118
 Printed: September 23, 2020
 Legal: SE-28-27-04-W05M

Landowner Circulation Area

Redesignation Proposal

To redesignate the subject lands from Agriculture General District to Agriculture Small Parcel District to facilitate the creation of a 70.0 acre parcel (Lot 1) with a 70.0 acre remainder (Lot 2).

Legend

Support

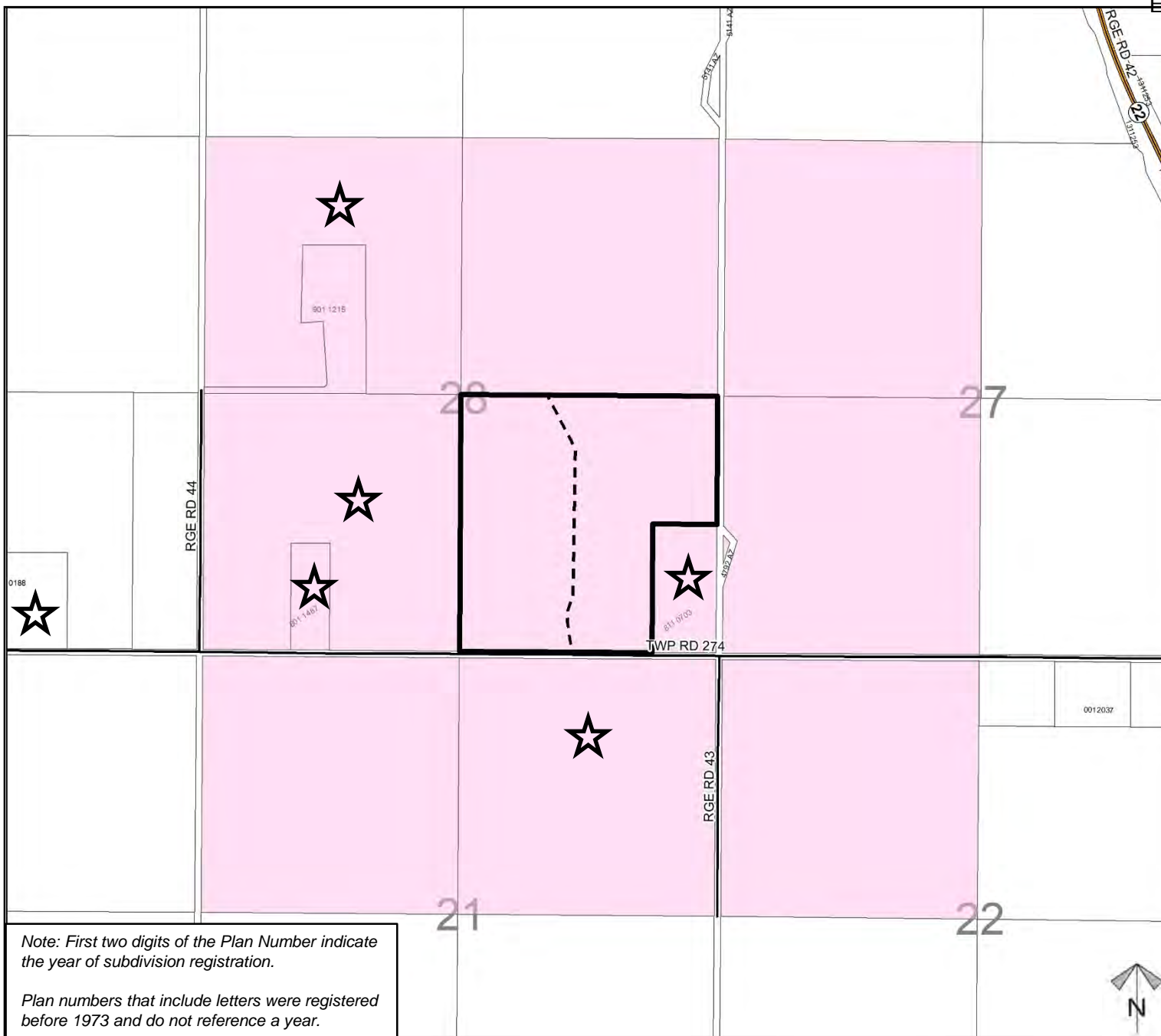


Opposition



2 responses outside of
circulation area

Division: 9
 Roll: 07828003
 File: PL20200118
 Printed: September 23, 2020
 Legal: SE-28-27-04-W05M



Note: First two digits of the Plan Number indicate the year of subdivision registration.

Plan numbers that include letters were registered before 1973 and do not reference a year.