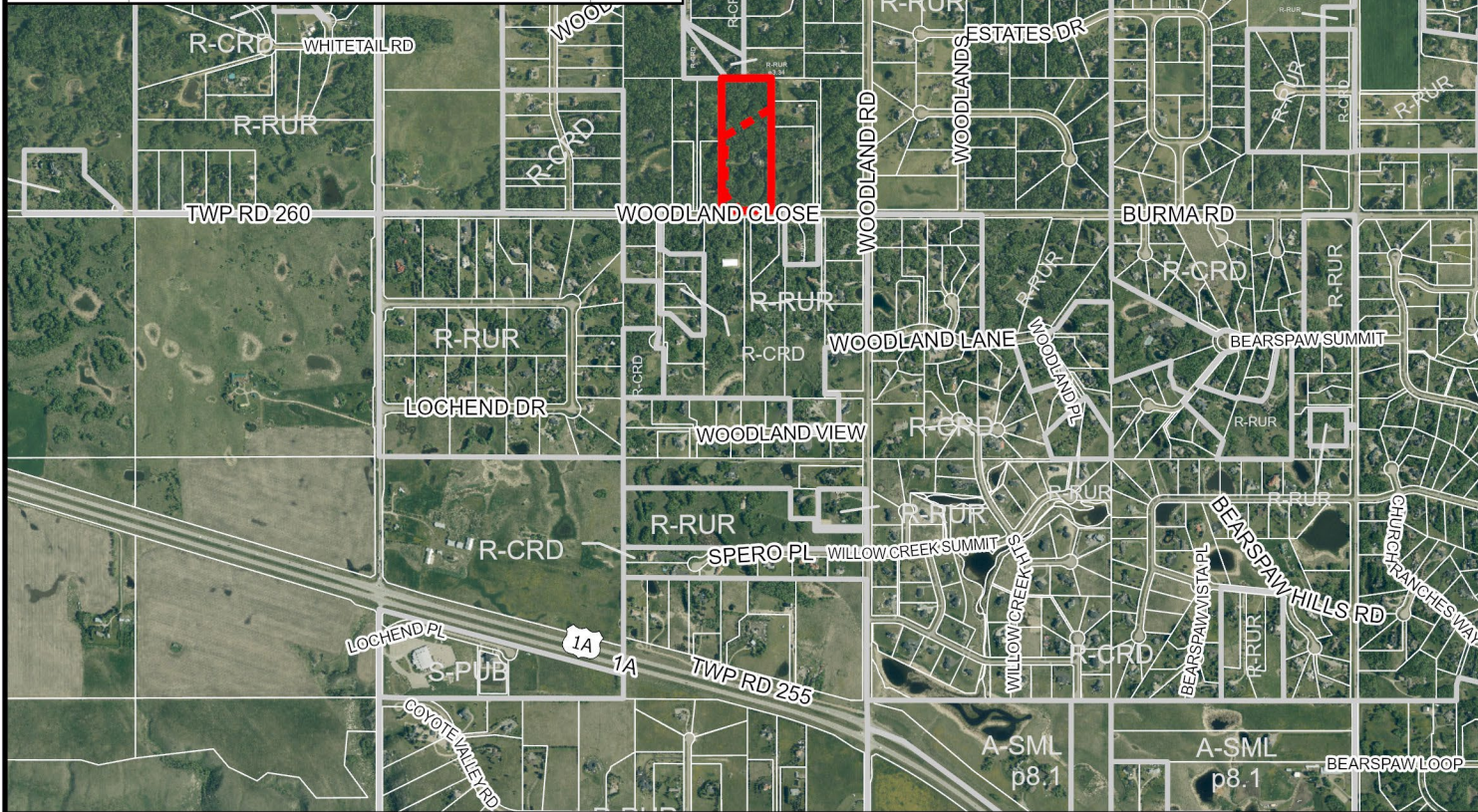
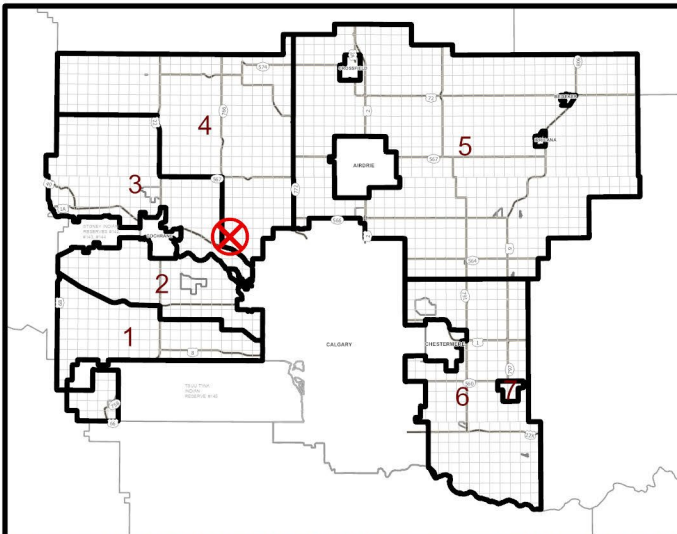




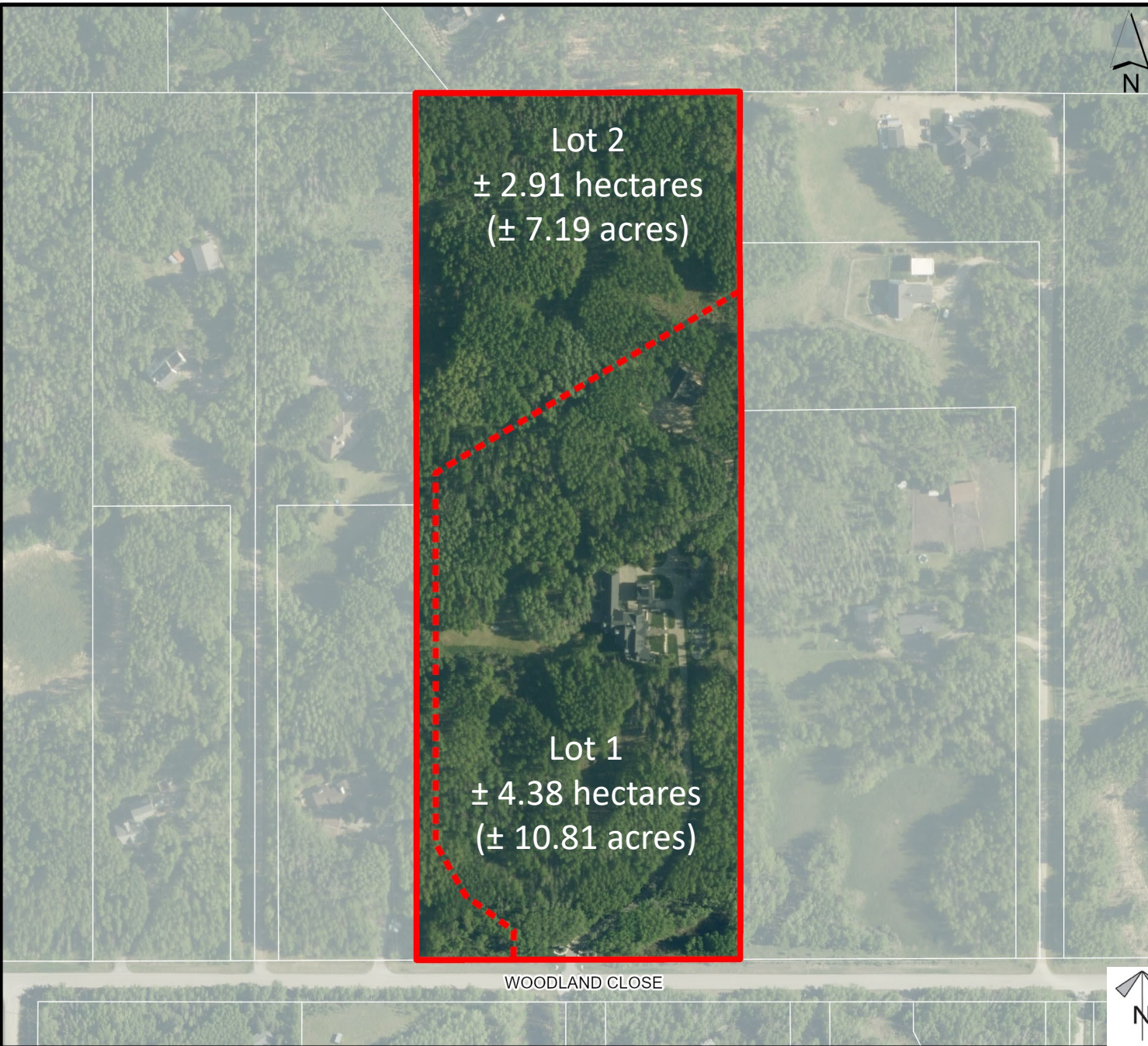
ROCKY VIEW COUNTY

Location & Context

To create a ± 2.91 hectare (± 7.19 acre) parcel with a ± 4.38 hectare (± 10.81 acre) remainder



Division: 4
Roll: 06702006
File: PL20220072
Printed: 2/13/2026
Legal: A portion of
SE-02-26-03-W05M



Lot 2
± 2.91 hectares
(± 7.19 acres)

Lot 1
± 4.38 hectares
(± 10.81 acres)

WOODLAND CLOSE

Proposal

To create a ± 2.91 hectare (± 7.19 acre) parcel with a ± 4.38 hectare (± 10.81 acre) remainder

Division: 4
Roll: 06702006
File: PL20220072
Printed: 2/13/2026
Legal: A portion of SE-02-26-03-W05M

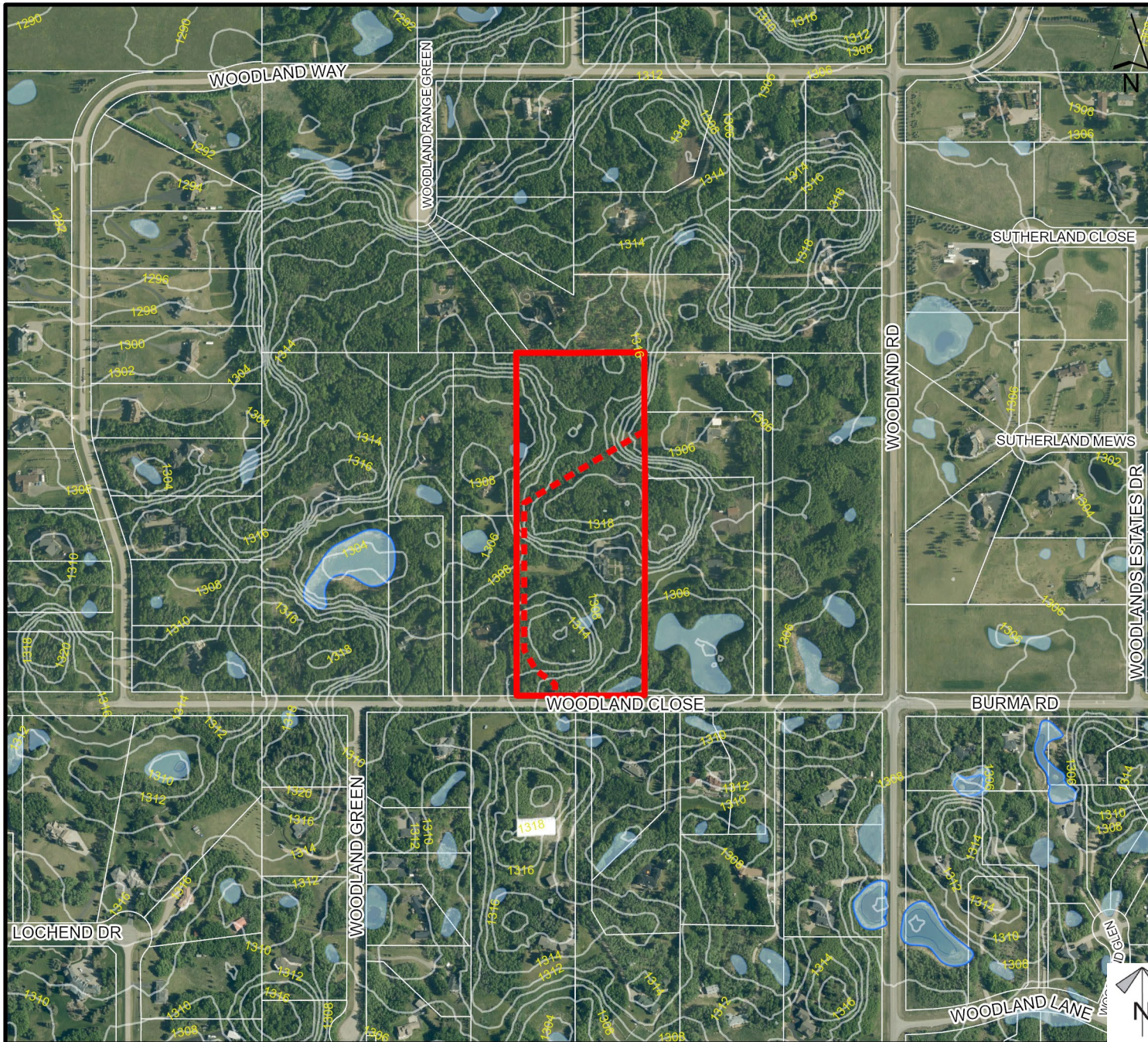




ROCKY VIEW COUNTY

Environmental

To create a ± 2.91 hectare (± 7.19 acre) parcel with a ± 4.38 hectare (± 10.81 acre) remainder



Legend

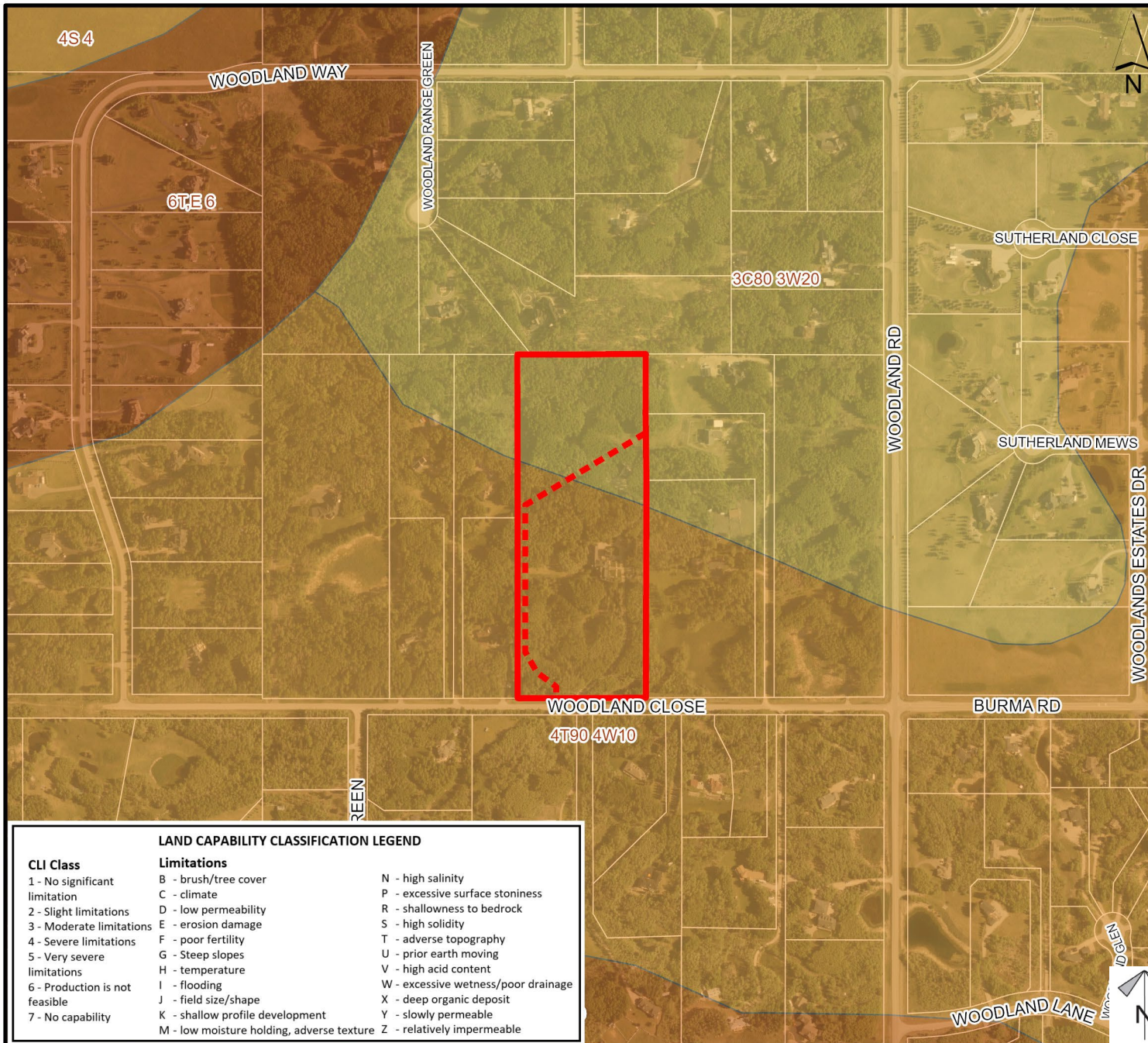
-  Subject Lands
-  Contour - 2 meters
-  Riparian Setbacks
-  Alberta Wetland Inventory
-  Surface Water

Division: 4
 Roll: 06702006
 File: PL20220072
 Printed: 2/13/2026
 Legal: A portion of SE-02-26-03-W05M



Soil Classifications

To create a ± 2.91 hectare (± 7.19 acre) parcel with a ± 4.38 hectare (± 10.81 acre) remainder



LAND CAPABILITY CLASSIFICATION LEGEND

CLI Class	Limitations	
1 - No significant limitation	B - brush/tree cover	N - high salinity
2 - Slight limitations	C - climate	P - excessive surface stoniness
3 - Moderate limitations	D - low permeability	R - shallowness to bedrock
4 - Severe limitations	E - erosion damage	S - high solidity
5 - Very severe limitations	F - poor fertility	T - adverse topography
6 - Production is not feasible	G - Steep slopes	U - prior earth moving
7 - No capability	H - temperature	V - high acid content
	I - flooding	W - excessive wetness/poor drainage
	J - field size/shape	X - deep organic deposit
	K - shallow profile development	Y - slowly permeable
	M - low moisture holding, adverse texture	Z - relatively impermeable

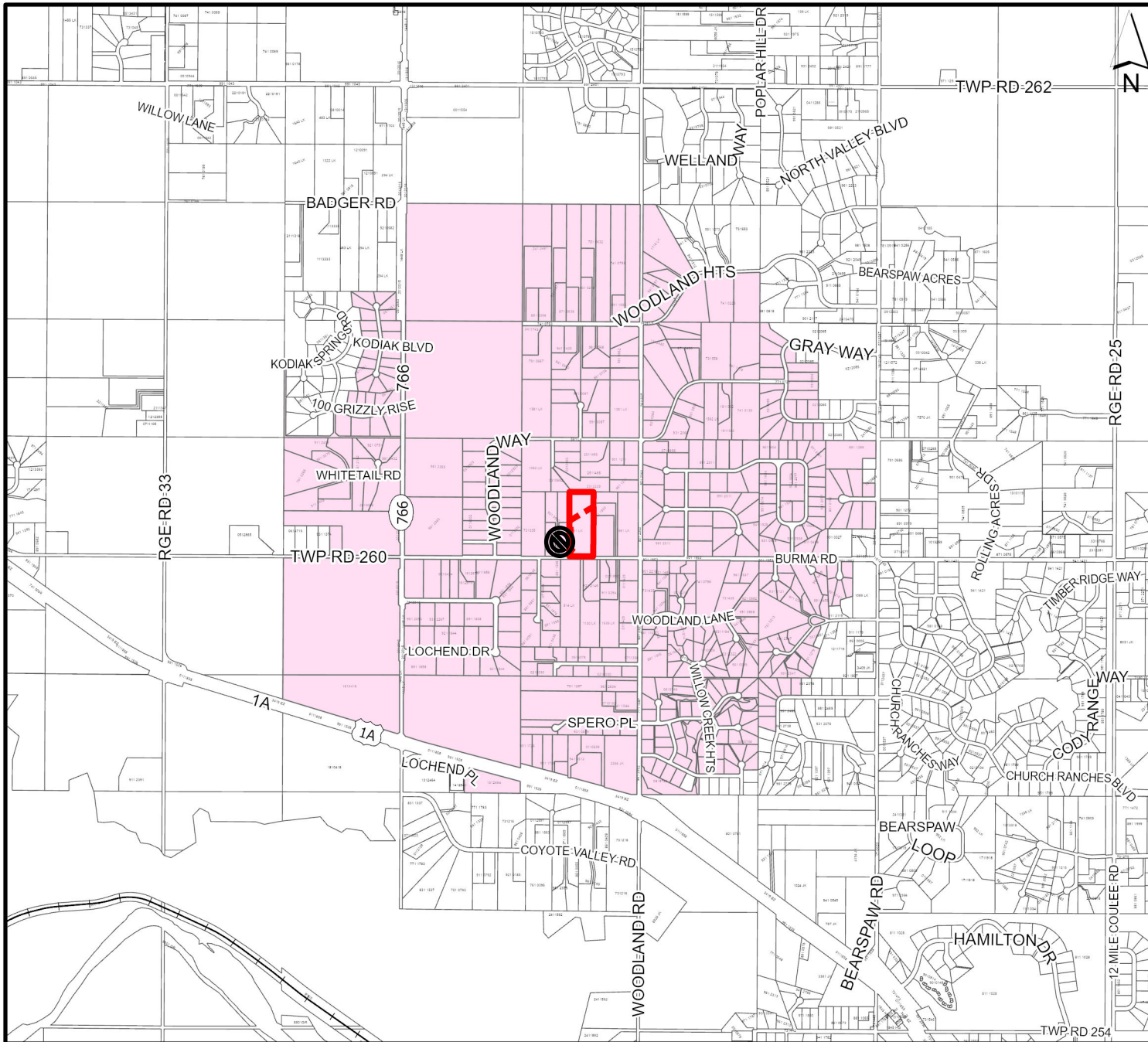
Division: 4
 Roll: 06702006
 File: PL20220072
 Printed: 2/13/2026
 Legal: A portion of SE-02-26-03-W05M



ROCKY VIEW COUNTY

**Landowner
Circulation Area**

To create a ± 2.91
hectare (± 7.19 acre)
parcel with a ± 4.38
hectare (± 10.81
acre) remainder



Legend

Support



Not Support



Division: 4
Roll: 06702006
File: PL20220072
Printed: 2/13/2026
Legal: A portion of
SE-02-26-03-W05M