

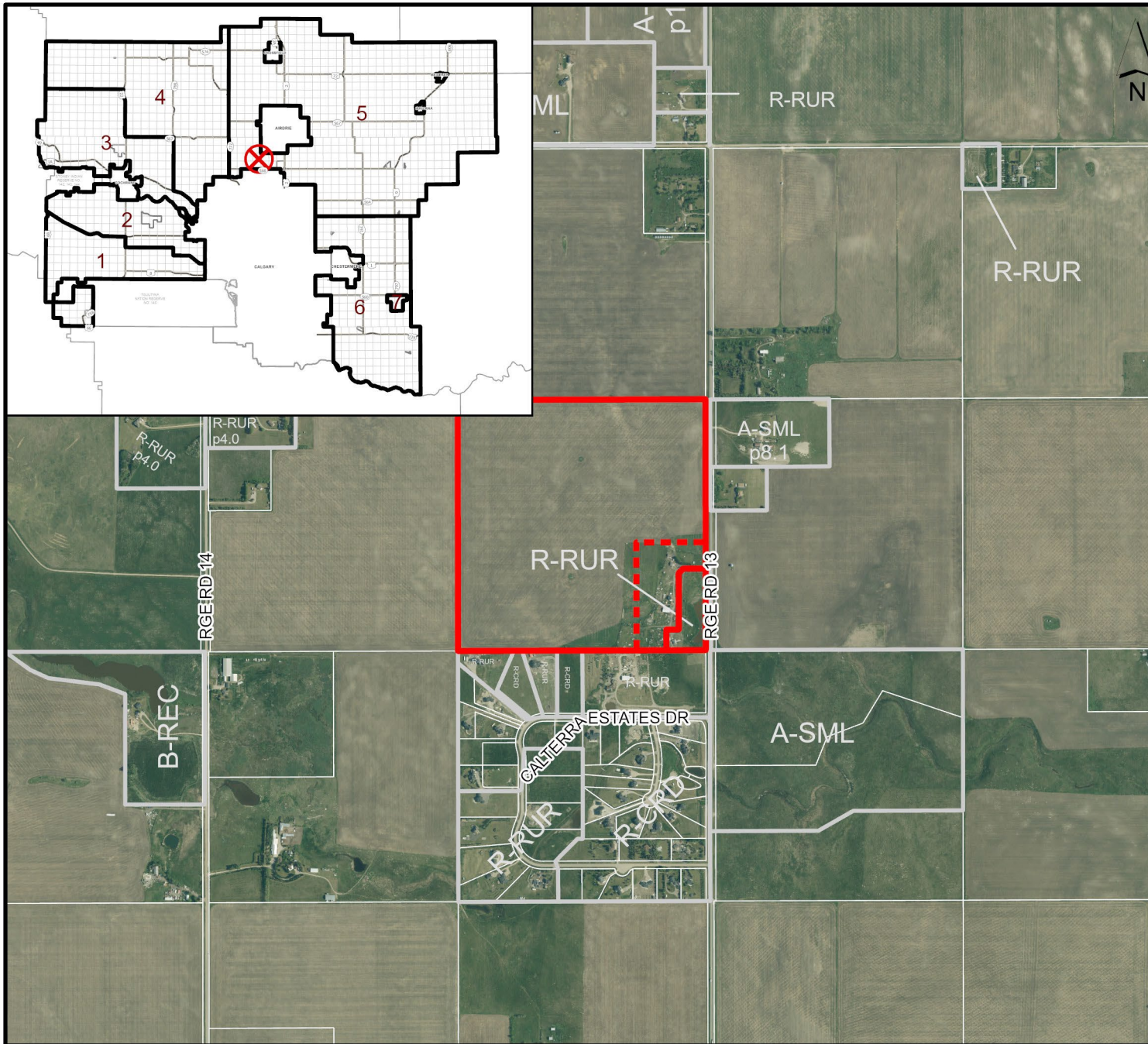


ROCKY VIEW COUNTY

### Location & Context

#### Redesignation Proposal

To redesignate Lot 1, Block 1, Plan 1812387 (Lot 1) containing ± 2.52 hectares (± 6.23 acres) from Rural Residential District (R-RUR) to Small Agricultural District (A-SML p8.1) and a portion of SE-21-26-01-W5M (remainder) containing ± 5.49 hectares (± 13.78 acres) from General Agricultural District (A-GEN) to A-SML p8.1.



Division: 5  
 Roll: 06521001,06521008  
 File: PL20250178  
 Printed: 12/11/2025  
 Legal: A portion of SE-21-26-01-W05M



### Proposal

#### Redesignation Proposal

To redesignate Lot 1, Block 1, Plan 1812387 (Lot 1) containing ± 2.52 hectares (± 6.23 acres) from Rural Residential District (R-RUR) to Small Agricultural District (A-SML p8.1) and a portion of SE-21-26-01-W5M (remainder) containing ± 5.49 hectares (± 13.78 acres) from General Agricultural District (A-GEN) to A-SML p8.1.



Division: 5  
Roll: 06521001,06521008  
File: PL20250178  
Printed: 12/11/2025  
Legal: A portion of SE-21-26-01-W05M



ROCKY VIEW COUNTY

### Environmental

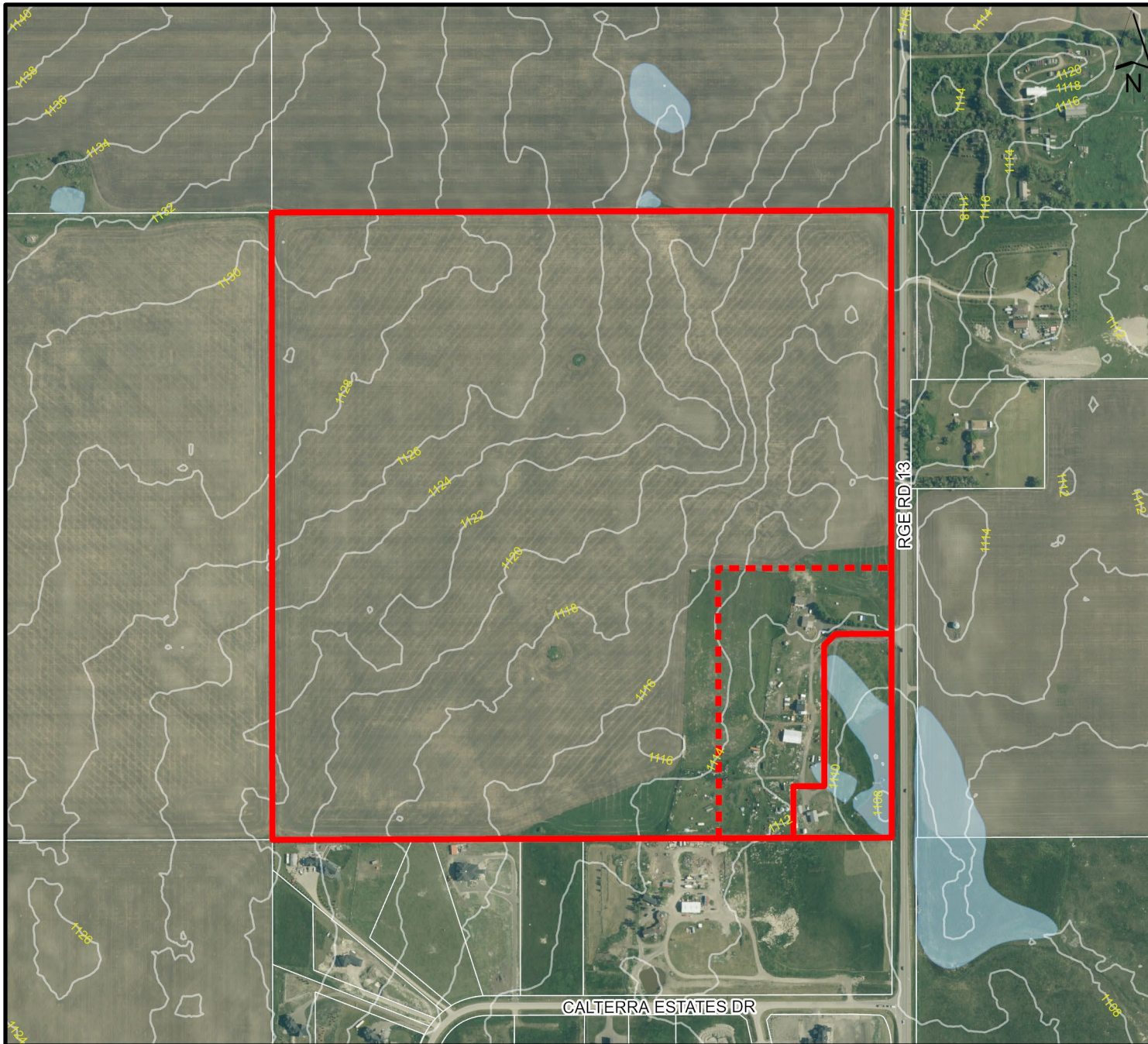
#### Redesignation Proposal

To redesignate Lot 1, Block 1, Plan 1812387 (Lot 1) containing  $\pm$  2.52 hectares ( $\pm$  6.23 acres) from Rural Residential District (R-RUR) to Small Agricultural District (A-SML p8.1) and a portion of SE-21-26-01-W5M (remainder) containing  $\pm$  5.49 hectares ( $\pm$  13.78 acres) from General Agricultural District (A-GEN) to A-SML p8.1.

#### Legend

-  Subject Lands
-  Contour - 2 meters
-  Riparian Setbacks
-  Alberta Wetland Inventory
-  Surface Water

Division: 5  
Roll: 06521001,06521008  
File: PL20250178  
Printed: 12/11/2025  
Legal: A portion of  
SE-21-26-01-W05M



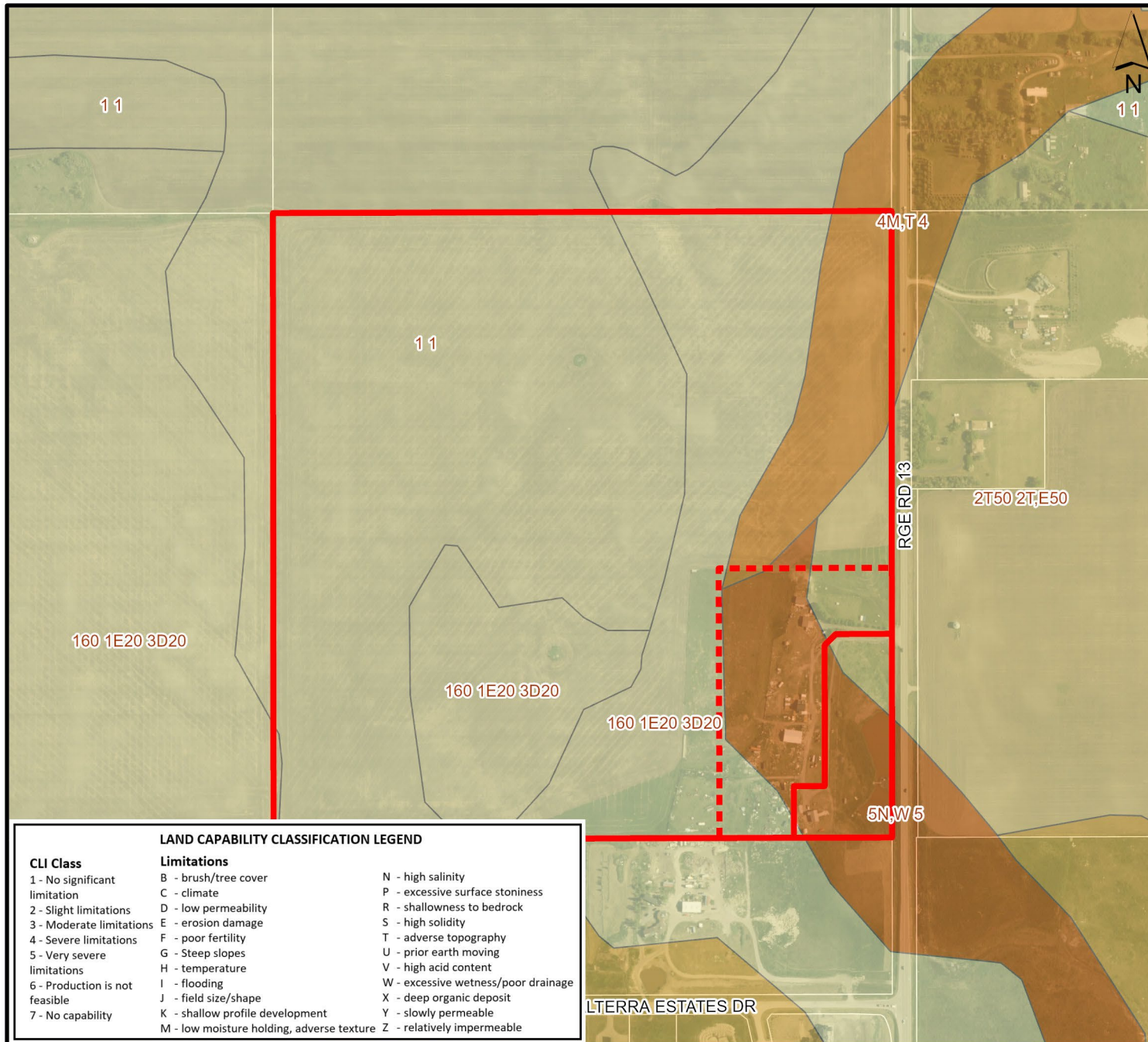


ROCKY VIEW COUNTY

### Soil Classifications

#### Redesignation Proposal

To redesignate Lot 1, Block 1, Plan 1812387 (Lot 1) containing ± 2.52 hectares (± 6.23 acres) from Rural Residential District (R-RUR) to Small Agricultural District (A-SML p8.1) and a portion of SE-21-26-01-W5M (remainder) containing ± 5.49 hectares (± 13.78 acres) from General Agricultural District (A-GEN) to A-SML p8.1.



**LAND CAPABILITY CLASSIFICATION LEGEND**

CLI Class	Limitations		
1 - No significant limitation	B - brush/tree cover	N - high salinity	P - excessive surface stoniness
2 - Slight limitations	C - climate	R - shallowness to bedrock	S - high solidity
3 - Moderate limitations	D - low permeability	T - adverse topography	U - prior earth moving
4 - Severe limitations	E - erosion damage	V - high acid content	W - excessive wetness/poor drainage
5 - Very severe limitations	F - poor fertility	X - deep organic deposit	Y - slowly permeable
6 - Production is not feasible	G - Steep slopes	Z - relatively impermeable	
7 - No capability	H - temperature		
	I - flooding		
	J - field size/shape		
	K - shallow profile development		
	M - low moisture holding, adverse texture		

Division: 5  
 Roll: 06521001,06521008  
 File: PL20250178  
 Printed: 12/11/2025  
 Legal: A portion of SE-21-26-01-W05M





Schedule 'A'

Bylaw  
C-8734-2026



Remainder  
A-GEN  
± 56.33 ha  
(± 138.99 ac)

Remainder  
A-GEN → A-SML p8.1  
± 5.49 ha  
(± 13.78 ac)

Lot 1  
R-RUR → A-SML p8.1  
± 2.52 ha  
(± 6.23 ac)

RGE RD 13

Amendment

**FROM**

General Agriculture  
(A-GEN)

**TO**

Small Agriculture  
(A-SML p8.1)

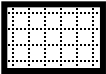


**FROM**

Rural Residential  
(R-RUR)

**TO**

Small Agriculture  
(A-SML p8.1)



Division: 5  
Roll: 06521001,06521008  
File: PL20250178  
Printed: 12/11/2025  
Legal: A portion of  
SE-21-26-01-W05M