

Transportation Services

Snow and Ice Control (SNIC)



Service Level Communication

Snow & Ice Control

A Quick Guide to Keeping You Moving on Rocky View County's Roads

Rocky View County knows that no one likes getting stuck on a snow-clogged road. To help keep you moving, our crews are quick to respond when a snow event happens. Plowing prioritizes initial opening of routes; widening when permissible.



PAVED ROADS are sanded and plowed in the following order after a snow event:

Priority 1: Main service roads and/or roads that have the highest traffic volumes.

Priority 2: Roads with lower traffic volumes that connect to a main service road or serve subdivisions and local residential areas.



OUR SERVICE GOAL is to complete snow and ice control on Priority 1 roads within 36 hours of the end of a snowfall event, and Priority 2 roads within 60 hours of the end of a snowfall event.

Our service goal is an average. It may take more time to clear roads if:

- The snowfall is continuous or prolonged, requiring us to start over on Priority 1 roads.
- Snow falls at night or during peak traffic times, when equipment must travel more slowly for safety.
- Parked or abandoned vehicles are blocking roads.
- The snowfall is unusually heavy.

Visit www.rockyview.ca/SnowControl to see a map of the road priorities.



GRAVEL ROADS are plowed when the snow pack reaches 10 cm.



UNMAINTAINED ROADS used for moving large farm vehicles or equipment are plowed by request as resources permit.

All primary and secondary highways in the County are cleared by Government of Alberta Contractors.



SNOW RIDGES

Like most municipalities, we don't clear the snow ridges (windrows) left at the roadside and ends of driveways after a snow plow has cleared a road — landowners are responsible for this. Snow is currently only hauled away when a road safety or drainage issue exists — there is a cost to snow removal and potential issues, such as spring flooding or land contamination, can occur at storage sites.



OUR SERVICE AREA

We plow every public road in the County — 2,224 lane kilometres of paved roads and 2,987 lane kilometres of gravel roads that are spread across an area more than four times the size of Calgary.



Industrial Road



Rural Road



Rural Local Road



Urban Local



Urban Cul de Sac



Urban Alley



How is SNIC Performed?


Roads Maintenance Staff

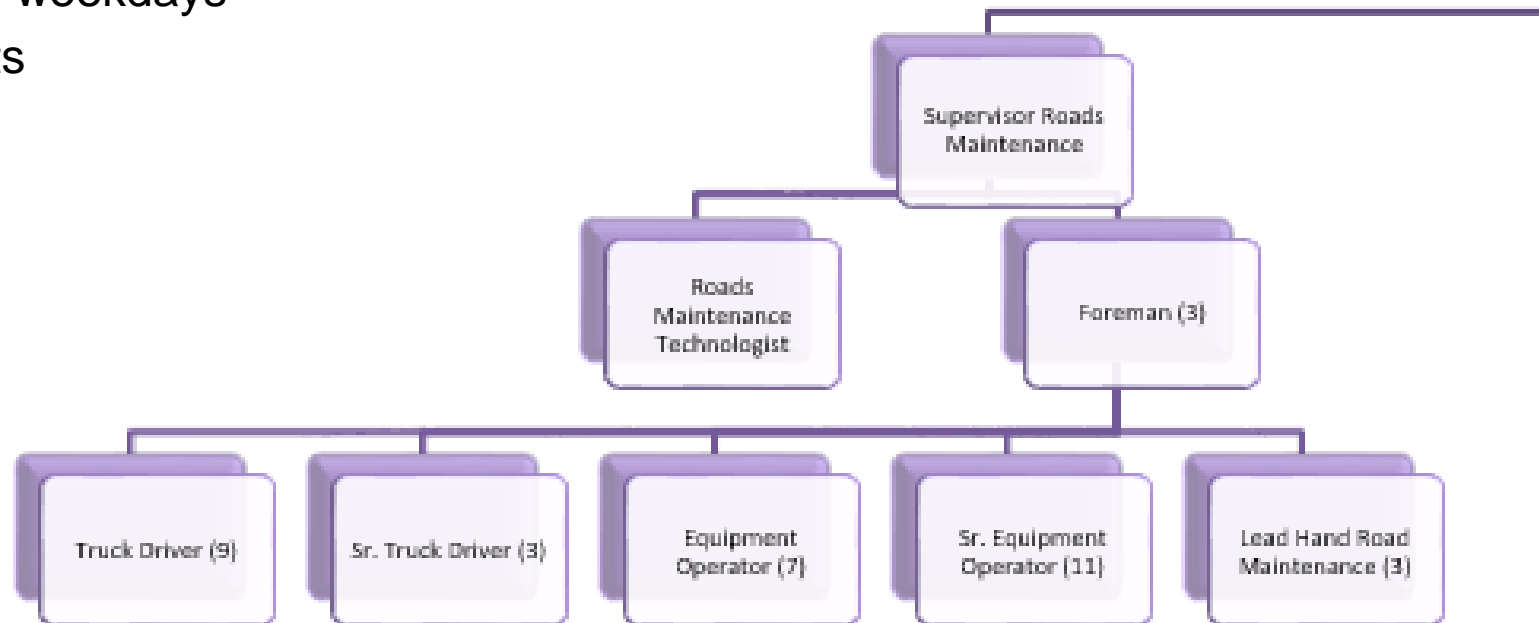
33 Employees

2 shifts: 4:00 am – 11:00 pm weekdays

1 shift: 12hrs weekends/Stats

Routes

- 
- Airdrie
 - Bearspaw North
 - Bearspaw South
 - Bragg Creek
 - Springbank North
 - Springbank South
 - East Industrial
 - Langdon
 - 1-Ton Route
 - Harmony/Watermark



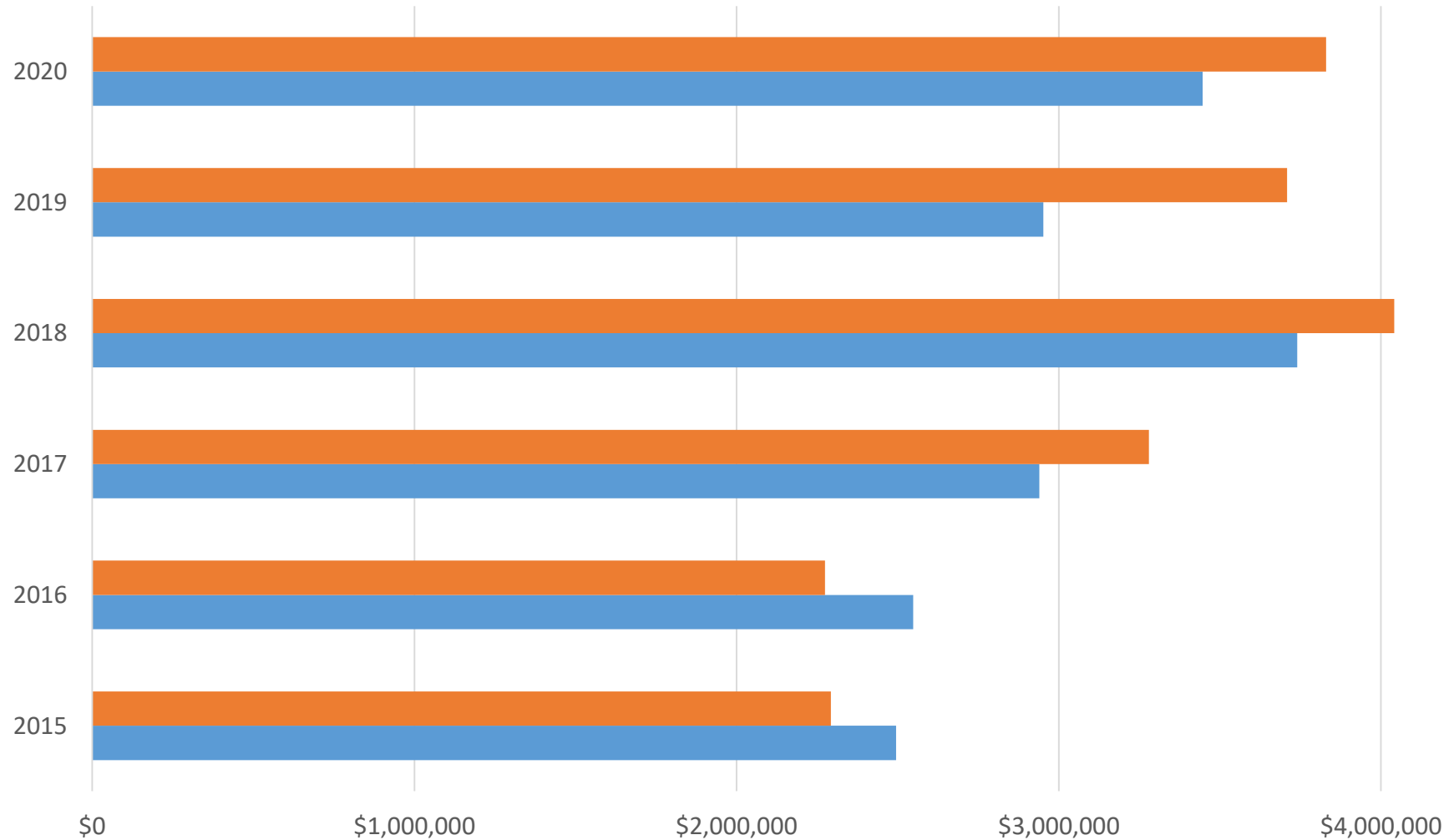
How is SNIC Performed?

Contractors

Route	Contractor
Balzac (2)	Blue Grass Ltd.
NW Rural	Leo Brown Contracting
NE Rural	Volker Stevin
SE Rural	Volker Stevin
Crossfield Rural	Volker Stevin



SNIC Budget versus Actual



Future Risks

Balzac Route	<ul style="list-style-type: none">▪ New multi-lane roads will effectively double/triple route lengths▪ 24 hr coverage is required
Alleys	<ul style="list-style-type: none">▪ Servicing of alleys is not currently included in policy or procedure, however they will require resources to maintain service levels and expectations going forward.
Residential Nodes	<ul style="list-style-type: none">▪ Areas such as Harmony, Watermark and Langdon will require dedicated units of new configurations.▪ New development styles with Cul de Sac's will require snow removal vs snow plowing
Staffing/Coverage	<ul style="list-style-type: none">▪ Coverage in Industrial requires 24 hr coverage, subdivisions require 7 day coverage, resources will be required.



Risk Mitigation

Reduced Level of Service Urban Areas	<ul style="list-style-type: none">▪ Align service levels in urban residential areas similar to local municipal peers
Parking Restrictions	<ul style="list-style-type: none">▪ Allows for increased on-street snow storage
Snow Management Options	<ul style="list-style-type: none">▪ Snow Melting▪ Snow Removal▪ Snow Storage Sites
SNIC Reserve	<ul style="list-style-type: none">▪ Dedicated reserve for extreme winter costs
Contract Services	<ul style="list-style-type: none">▪ Increase contracted services to provide 24 hr SNIC and 7 day coverage



Questions?

