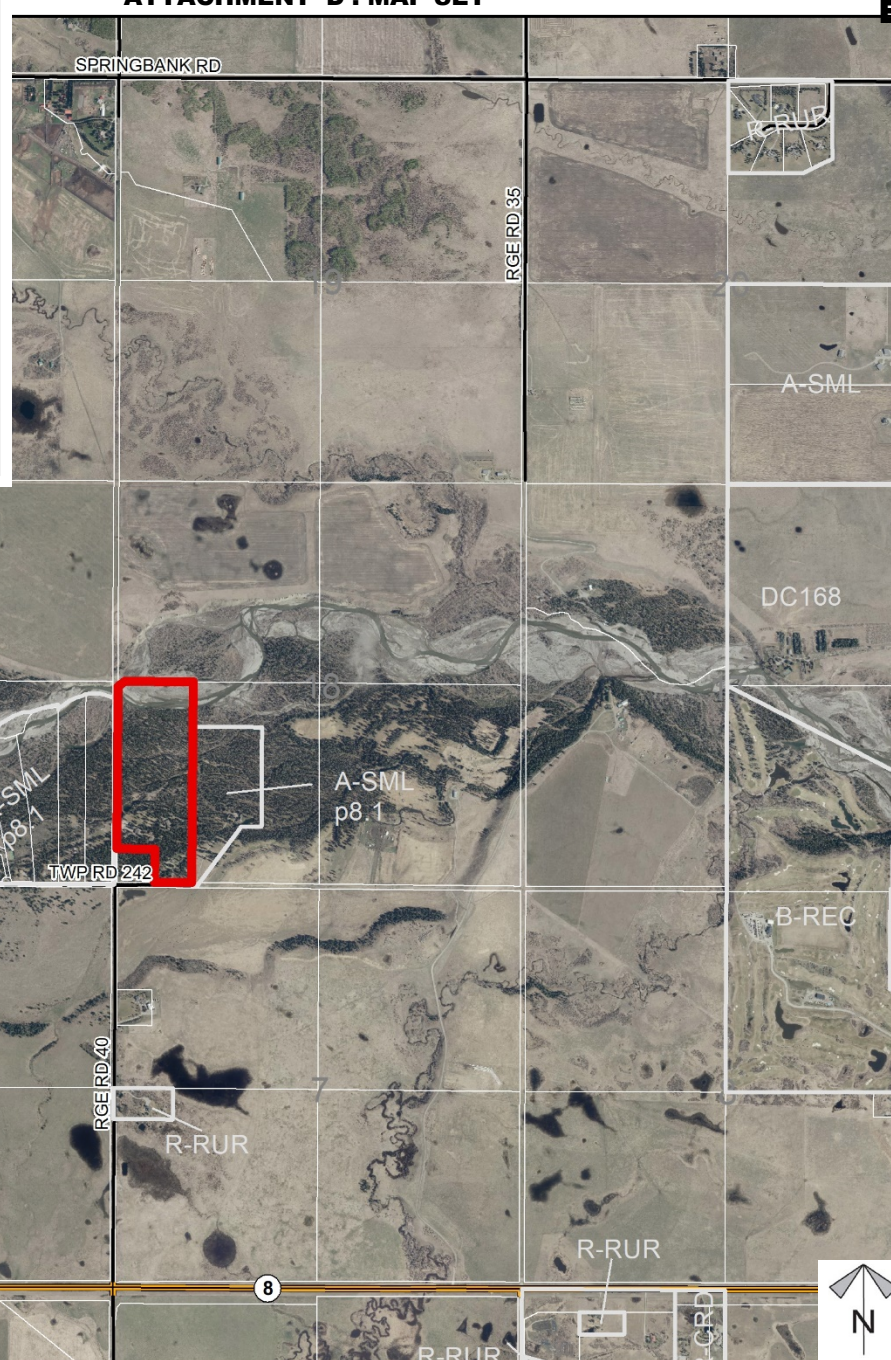
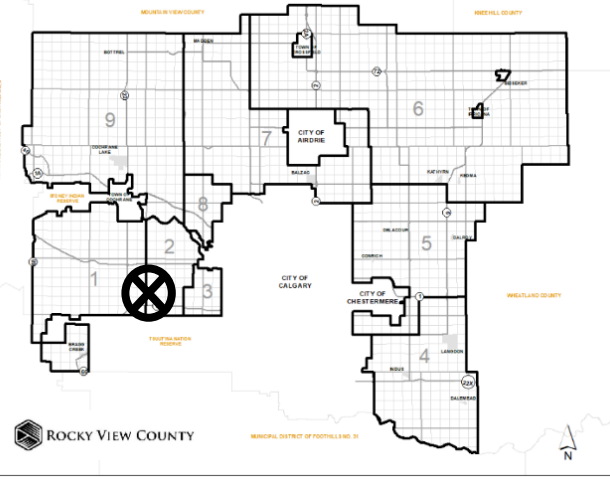


Location & Context

Redesignation Proposal

To redesignate a ± 1.85 hectare (± 4.58 acre) portion from Agricultural, General District to Residential, Rural District (R-RUR) to facilitate a residential subdivision.

Division: 2
 Roll: 04718006
 File: PL20200107
 Printed: October 27, 2020
 Legal: SW-18-24-03-05



Development Proposal

Redesignation Proposal

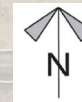
To redesignate a ± 1.85 hectare (± 4.58 acre) portion from Agricultural, General District to Residential, Rural District (R-RUR) to facilitate a residential subdivision.

Lot 2
 ± 20.40 ha (± 50.42 ac)
to remain A-GEN

40m wide
panhandle

Lot 1
 ± 1.85 ha
(± 4.58 ac)
A-GEN \rightarrow R-RUR

TWP RD 242



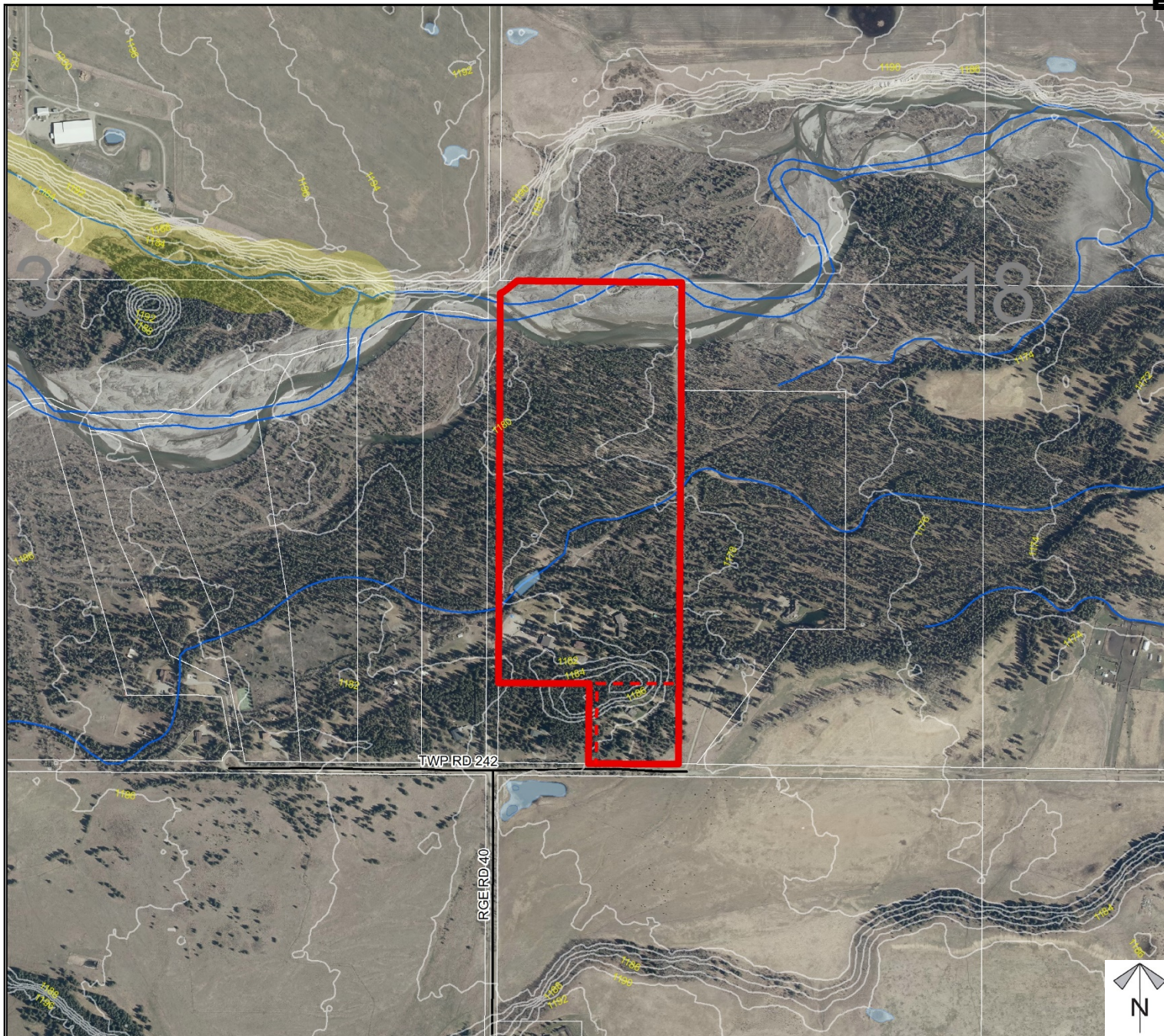
Division: 2
Roll: 04718006
File: PL20200107
Printed: October 27, 2020
Legal: SW-18-24-03-05

Environmental

Redesignation Proposal

To redesignate a ± 1.85 hectare (± 4.58 acre) portion from Agricultural, General District to Residential, Rural District (R-RUR) to facilitate a residential subdivision.

-  Subject Lands
-  Contour - 2 meters
-  Riparian Setbacks
-  Alberta Wetland Inventory
-  Surface Water

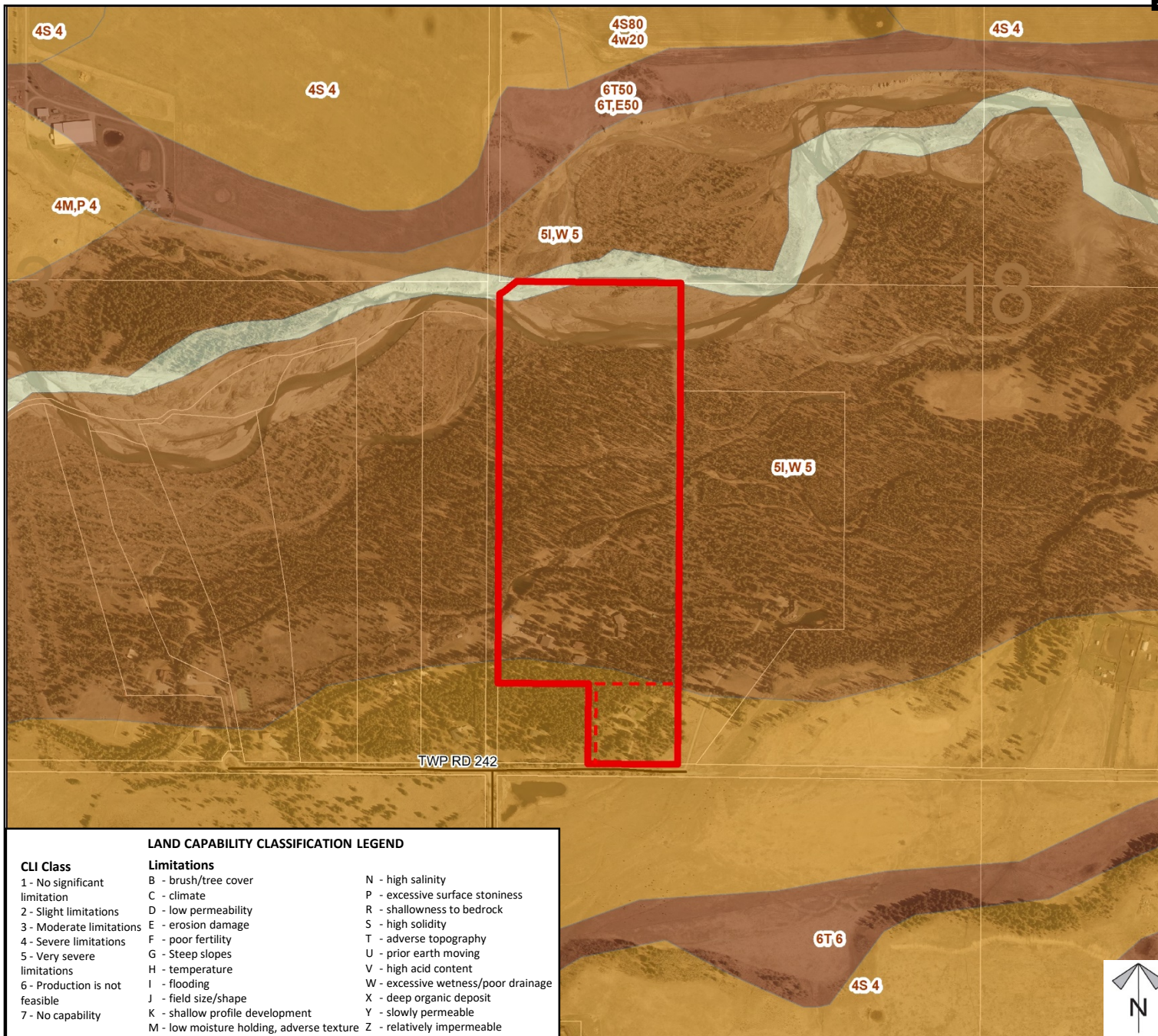


Division: 2
 Roll: 04718006
 File: PL20200107
 Printed: October 27, 2020
 Legal: SW-18-24-03-05

Soil Classifications

Redesignation Proposal

To redesignate a ± 1.85 hectare (± 4.58 acre) portion from Agricultural, General District to Residential, Rural District (R-RUR) to facilitate a residential subdivision.



LAND CAPABILITY CLASSIFICATION LEGEND

CLI Class

- 1 - No significant limitation
- 2 - Slight limitations
- 3 - Moderate limitations
- 4 - Severe limitations
- 5 - Very severe limitations
- 6 - Production is not feasible
- 7 - No capability

Limitations

- B - brush/tree cover
- C - climate
- D - low permeability
- E - erosion damage
- F - poor fertility
- G - Steep slopes
- H - temperature
- I - flooding
- J - field size/shape
- K - shallow profile development
- M - low moisture holding, adverse texture
- N - high salinity
- P - excessive surface stoniness
- R - shallowness to bedrock
- S - high solidity
- T - adverse topography
- U - prior earth moving
- V - high acid content
- W - excessive wetness/poor drainage
- X - deep organic deposit
- Y - slowly permeable
- Z - relatively impermeable

Division: 2
 Roll: 04718006
 File: PL20200107
 Printed: October 27, 2020
 Legal: SW-18-24-03-05

Landowner Circulation Area

Redesignation Proposal

To redesignate a ± 1.85 hectare (± 4.58 acre) portion from Agricultural, General District to Residential, Rural District (R-RUR) to facilitate a residential subdivision.

Legend

Support

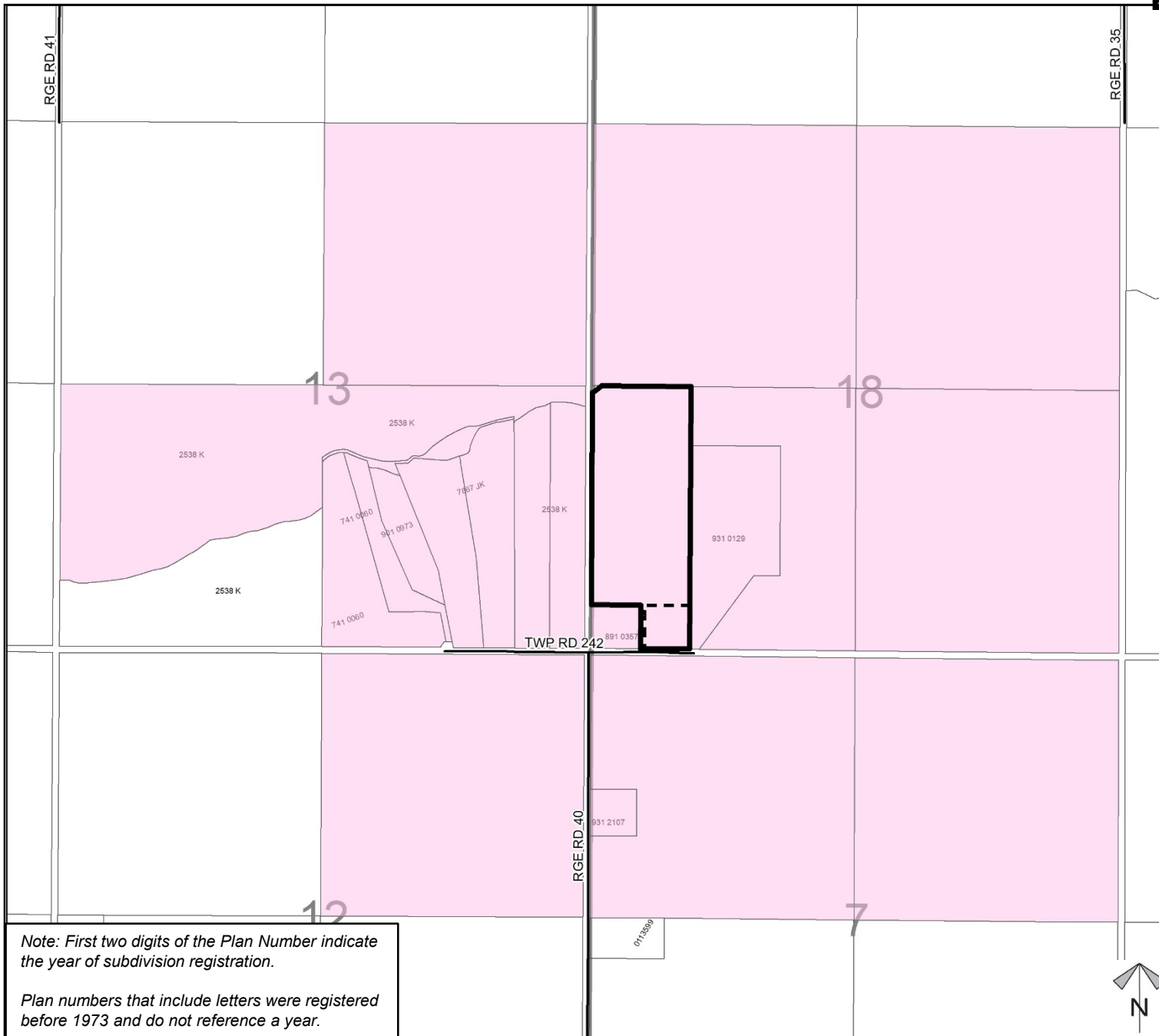


Opposition



Note: First two digits of the Plan Number indicate the year of subdivision registration.

Plan numbers that include letters were registered before 1973 and do not reference a year.



Division: 2
 Roll: 04718006
 File: PL20200107
 Printed: October 27, 2020
 Legal: SW-18-24-03-05