

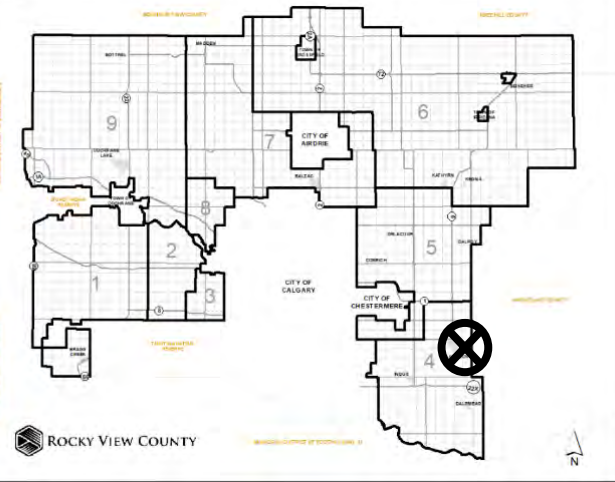


## Location & Context

### Redesignation Proposal

To redesignate the subject lands from Agricultural, General District (A-GEN) to Agricultural, Small District (A-SML p.16.5) to accommodate a future subdivision.

Division: 04  
Roll: 03213009  
File: PL20210017  
Printed: Feb 5, 2021  
Legal: A portion of NE-13-23-27-W04M







## Development Proposal

### Redesignation Proposal

To redesignate the subject lands from Agricultural, General District (A-GEN) to Agricultural, Small District (A-SML p.16.5) to accommodate a future subdivision.

DEAD HORSE RD SE

BOUNDARY ROAD

Division: 04  
Roll: 03213009  
File: PL20210017  
Printed: Feb 5, 2021  
Legal: A portion of NE-13-23-27-W04M



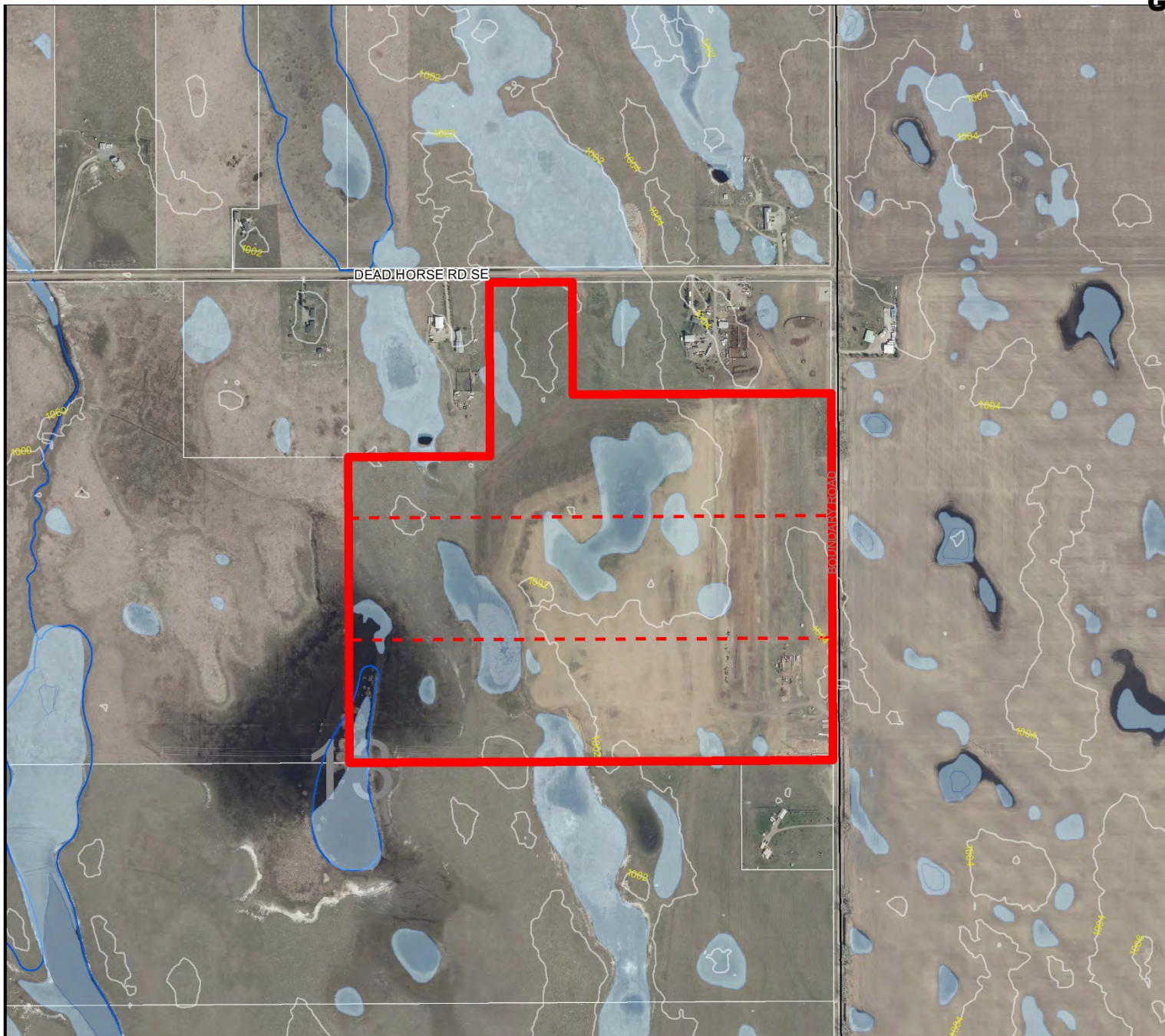
## Environmental

### Redesignation Proposal

To redesignate the subject lands from Agricultural, General District (A-GEN) to Agricultural, Small District (A-SML p.16.5) to accommodate a future subdivision.

-  Subject Lands
-  Contour - 2 meters
-  Riparian Setbacks
-  Alberta Wetland Inventory
-  Surface Water

Division: 04  
 Roll: 03213009  
 File: PL20210017  
 Printed: Feb 5, 2021  
 Legal: A portion of NE-13-23-27-W04M



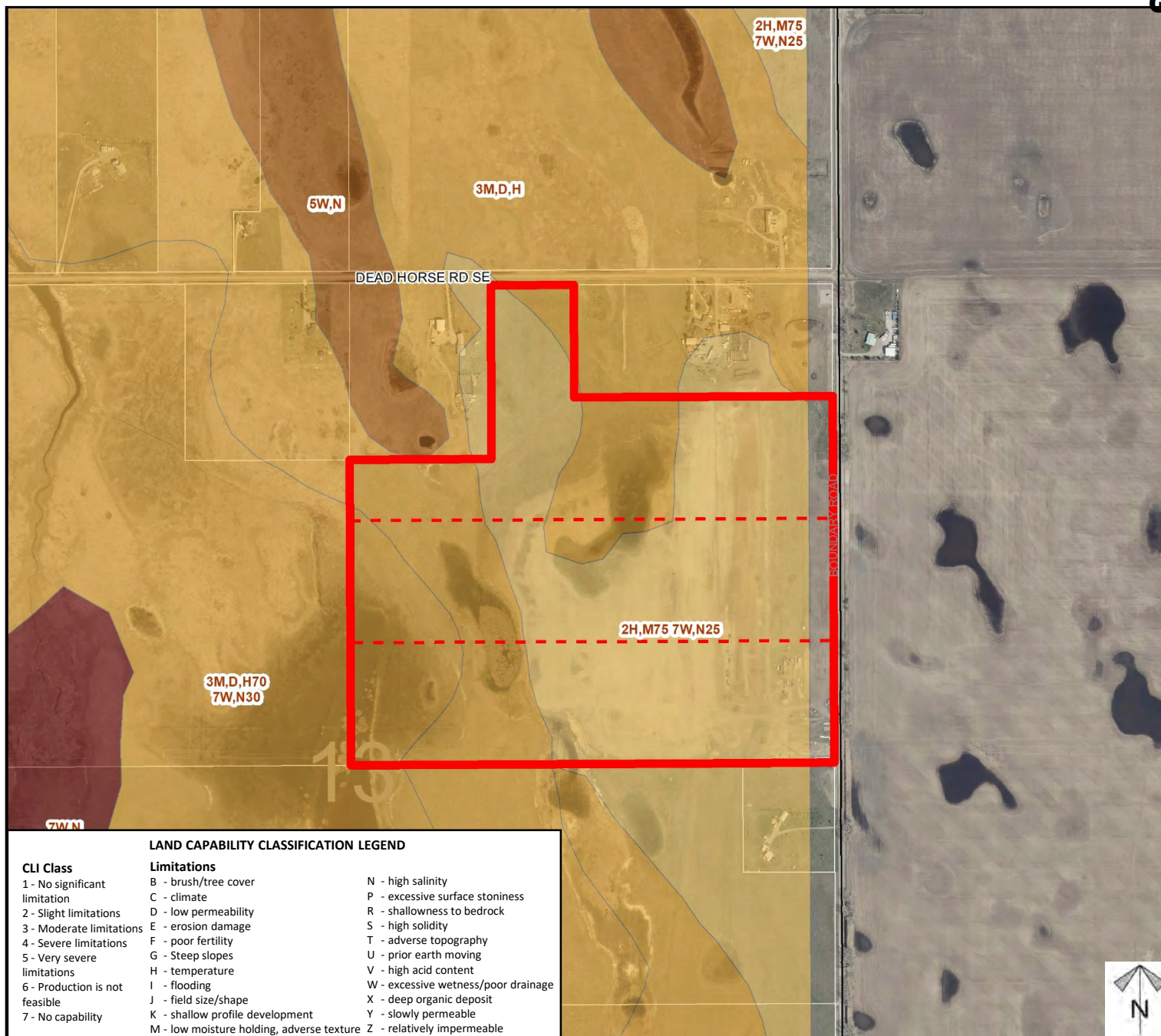




## Soil Classifications

### Redesignation Proposal

To redesignate the subject lands from Agricultural, General District (A-GEN) to Agricultural, Small District (A-SML p.16.5) to accommodate a future subdivision.



#### LAND CAPABILITY CLASSIFICATION LEGEND

##### CLI Class

- 1 - No significant limitation
- 2 - Slight limitations
- 3 - Moderate limitations
- 4 - Severe limitations
- 5 - Very severe limitations
- 6 - Production is not feasible
- 7 - No capability

##### Limitations

- B - brush/tree cover
- C - climate
- D - low permeability
- E - erosion damage
- F - poor fertility
- G - Steep slopes
- H - temperature
- I - flooding
- J - field size/shape
- K - shallow profile development
- M - low moisture holding, adverse texture
- N - high salinity
- P - excessive surface stoniness
- R - shallowness to bedrock
- S - high solidity
- T - adverse topography
- U - prior earth moving
- V - high acid content
- W - excessive wetness/poor drainage
- X - deep organic deposit
- Y - slowly permeable
- Z - relatively impermeable



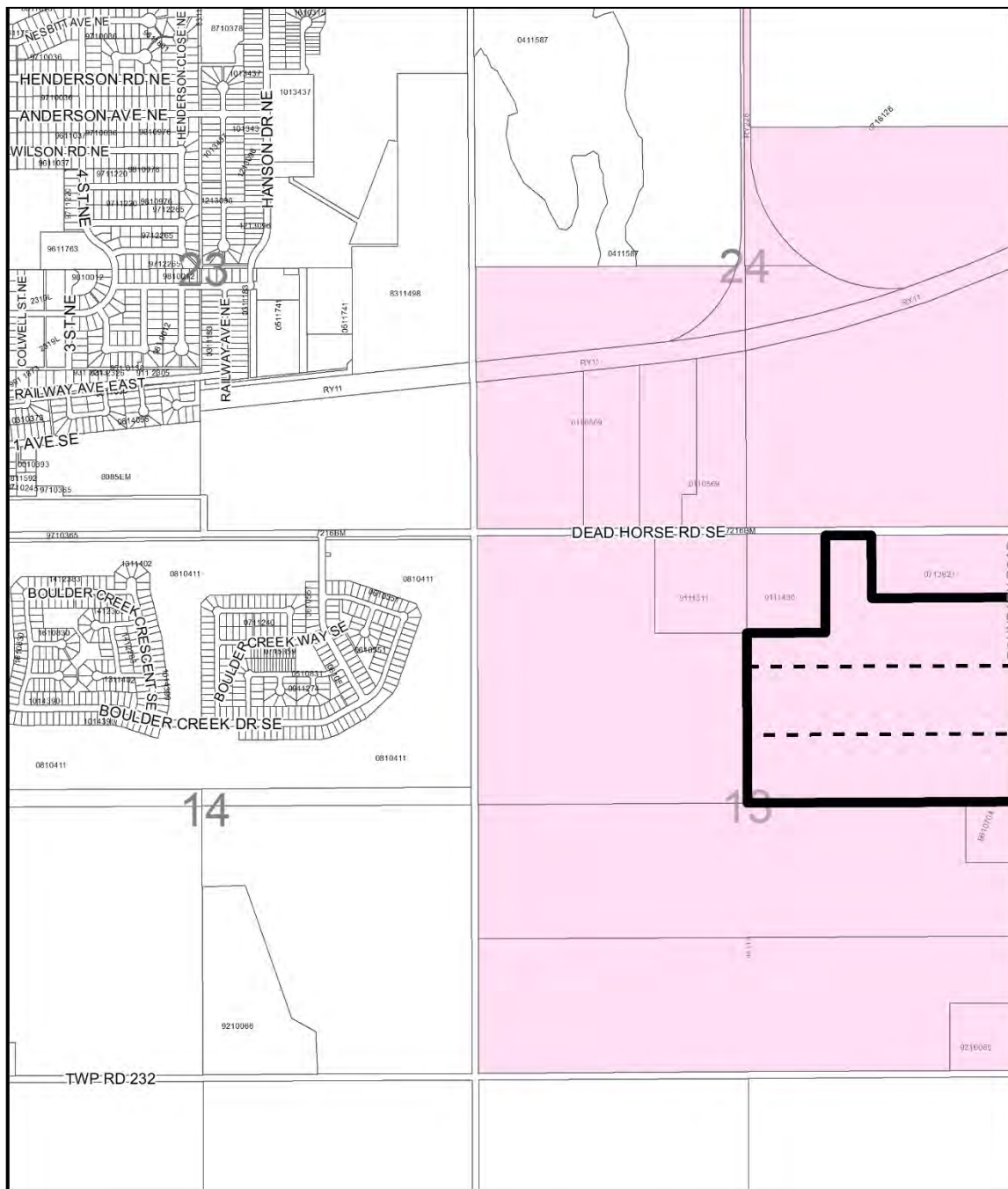
Division: 04  
Roll: 03213009  
File: PL20210017  
Printed: Feb 5, 2021  
Legal: A portion of NE-13-23-27-W04M



## Landowner Circulation Area

### Redesignation Proposal

To redesignate the subject lands from Agricultural, General District (A-GEN) to Agricultural, Small District (A-SML p.16.5) to accommodate a future subdivision.



### Legend

Support



Opposition



Division: 04  
Roll: 03213009  
File: PL20210017  
Printed: Feb 5, 2021  
Legal: A portion of NE-13-23-27-W04M