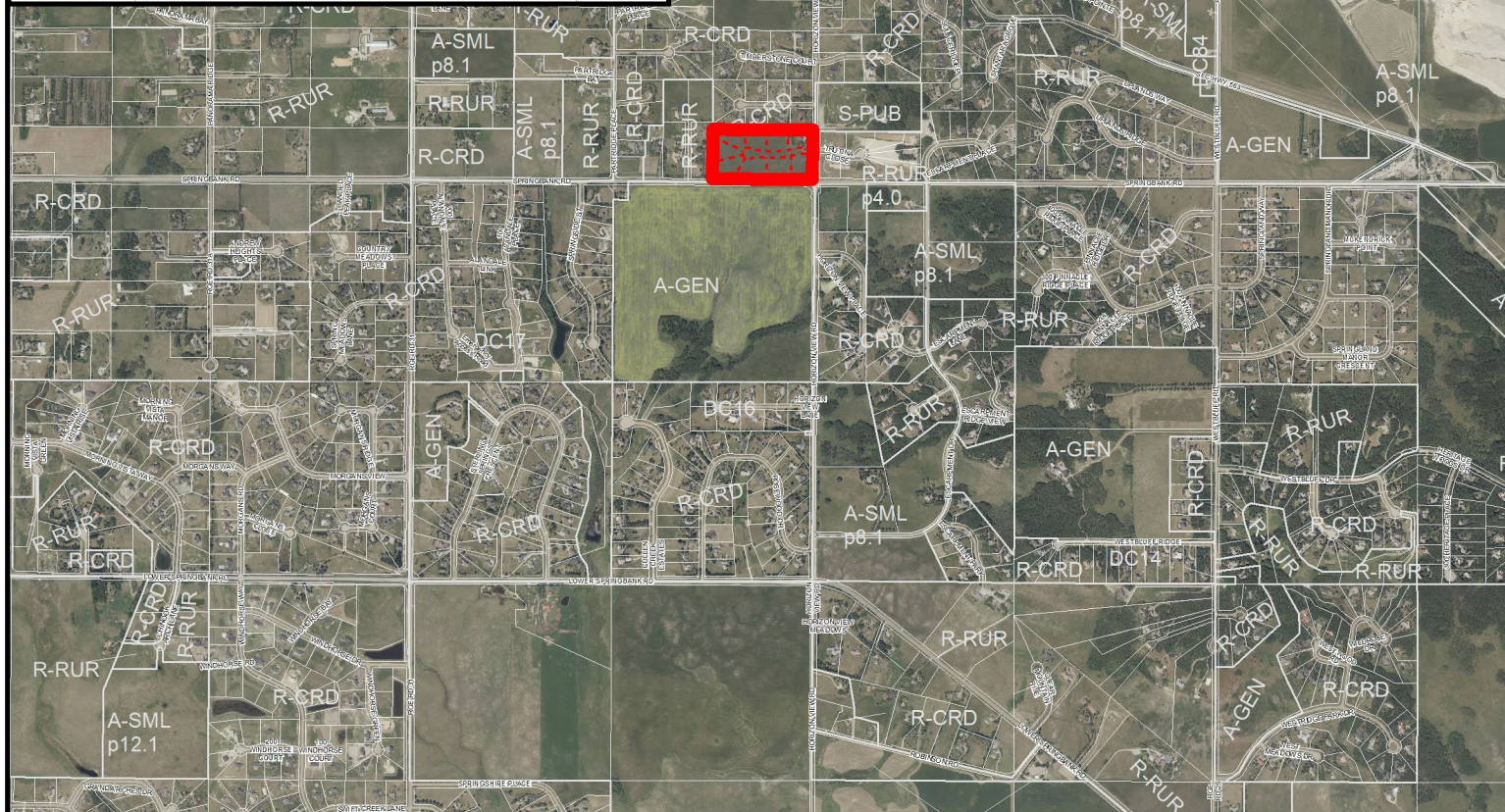
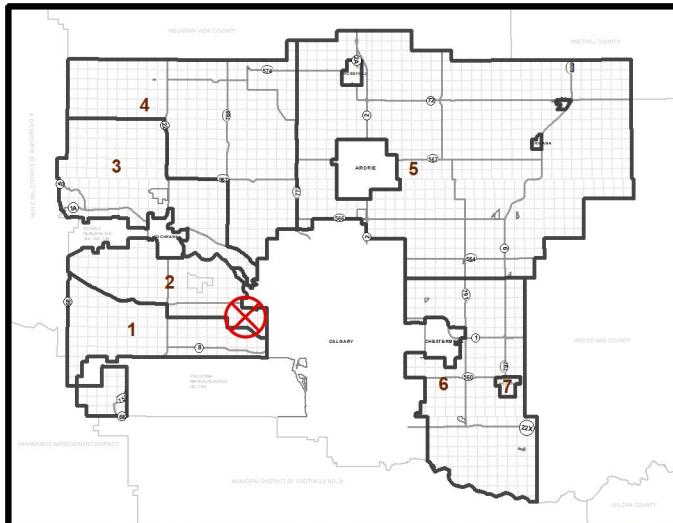


To create eight ± 0.737 hectare (± 1.82 acre) parcels with a ± 0.737 hectare (± 1.82 acre) remainder, ± 0.615 hectares (± 1.52 acres) of internal road, and ± 0.322 hectares (± 0.80 acres) of Municipal Reserve.

Division: 2
Roll: 04725006
File: PL20220041
Printed: 5/8/2024
Legal: A portion of
SE-25-24-03-W05M





Development Proposal

To create eight ± 0.737 hectare (± 1.82 acre) parcels with a ± 0.737 hectare (± 1.82 acre) remainder, ± 0.615 hectares (± 1.52 acres) of internal road, and ± 0.322 hectares (± 0.80 acres) of Municipal Reserve.





Environmental

To create eight ± 0.737 hectare (± 1.82 acre) parcels with a ± 0.737 hectare (± 1.82 acre) remainder, ± 0.615 hectares (± 1.52 acres) of internal road, and ± 0.322 hectares (± 0.80 acres) of Municipal Reserve.

Legend

-  Subject Lands
-  Contour - 2 meters
-  Riparian Setbacks
-  Alberta Wetland Inventory
-  Surface Water

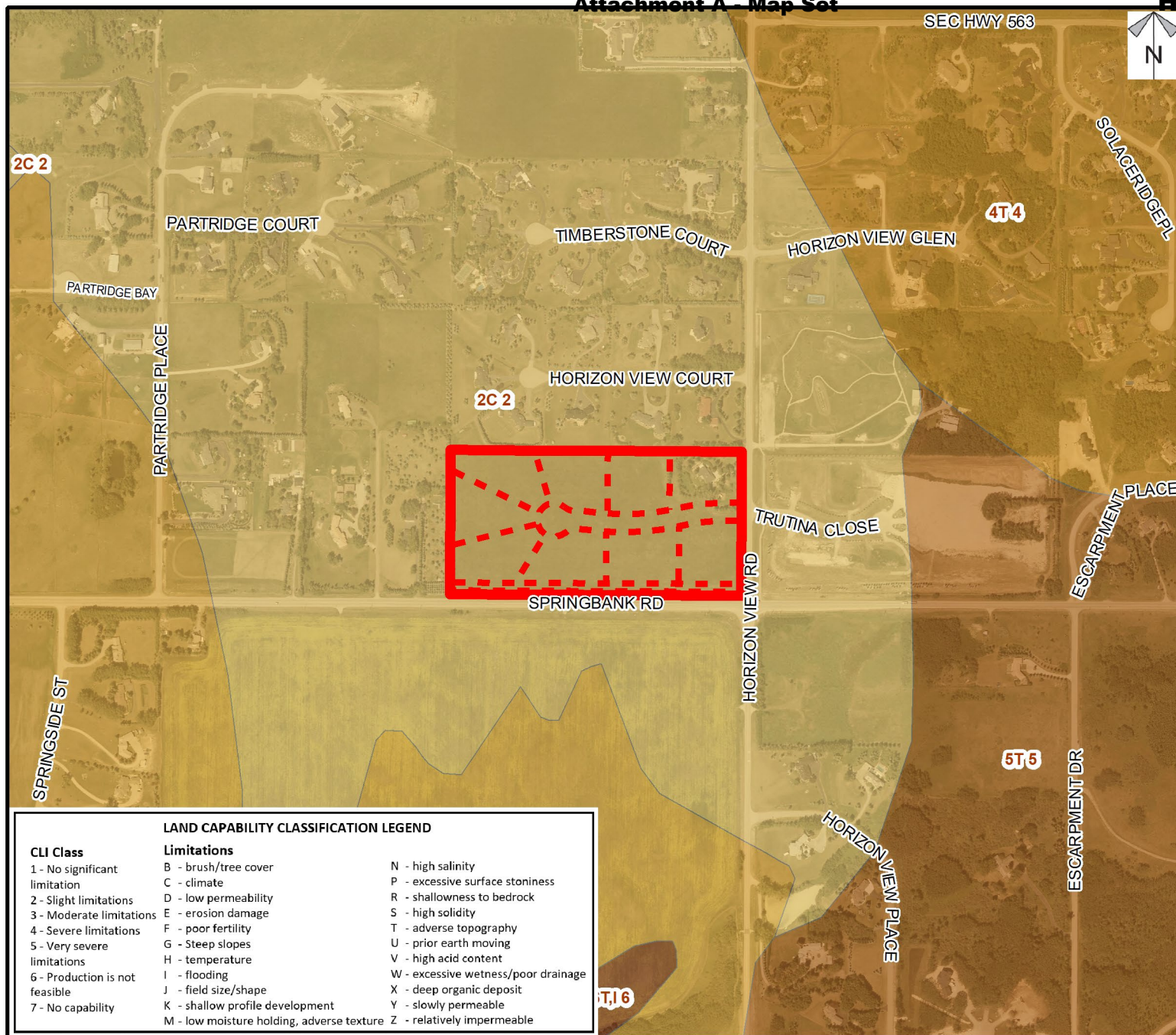
Division: 2
 Roll: 04725006
 File: PL20220041
 Printed: 5/8/2024
 Legal: A portion of
 SE-25-24-03-W05M





Soil Classifications

To create eight ± 0.737 hectare (± 1.82 acre) parcels with a ± 0.737 hectare (± 1.82 acre) remainder, ± 0.615 hectares (± 1.52 acres) of internal road, and ± 0.322 hectares (± 0.80 acres) of Municipal Reserve.



LAND CAPABILITY CLASSIFICATION LEGEND

CLI Class

- 1 - No significant limitation
- 2 - Slight limitations
- 3 - Moderate limitations
- 4 - Severe limitations
- 5 - Very severe limitations
- 6 - Production is not feasible
- 7 - No capability

Limitations

- B - brush/tree cover
- C - climate
- D - low permeability
- E - erosion damage
- F - poor fertility
- G - Steep slopes
- H - temperature
- I - flooding
- J - field size/shape
- K - shallow profile development
- M - low moisture holding, adverse texture
- N - high salinity
- P - excessive surface stoniness
- R - shallowness to bedrock
- S - high solidity
- T - adverse topography
- U - prior earth moving
- V - high acid content
- W - excessive wetness/poor drainage
- X - deep organic deposit
- Y - slowly permeable
- Z - relatively impermeable

Division: 2
 Roll: 04725006
 File: PL20220041
 Printed: 5/8/2024
 Legal: A portion of
 SE-25-24-03-W05M



Landowner Circulation Area

To create eight ± 0.737 hectare (± 1.82 acre) parcels with a ± 0.737 hectare (± 1.82 acre) remainder, ± 0.615 hectares (± 1.52 acres) of internal road, and ± 0.322 hectares (± 0.80 acres) of Municipal Reserve.

1 concern unknown address, 1 concern from developer of Trutina Close lots (adjacent to east)

Legend

Support



Not Support

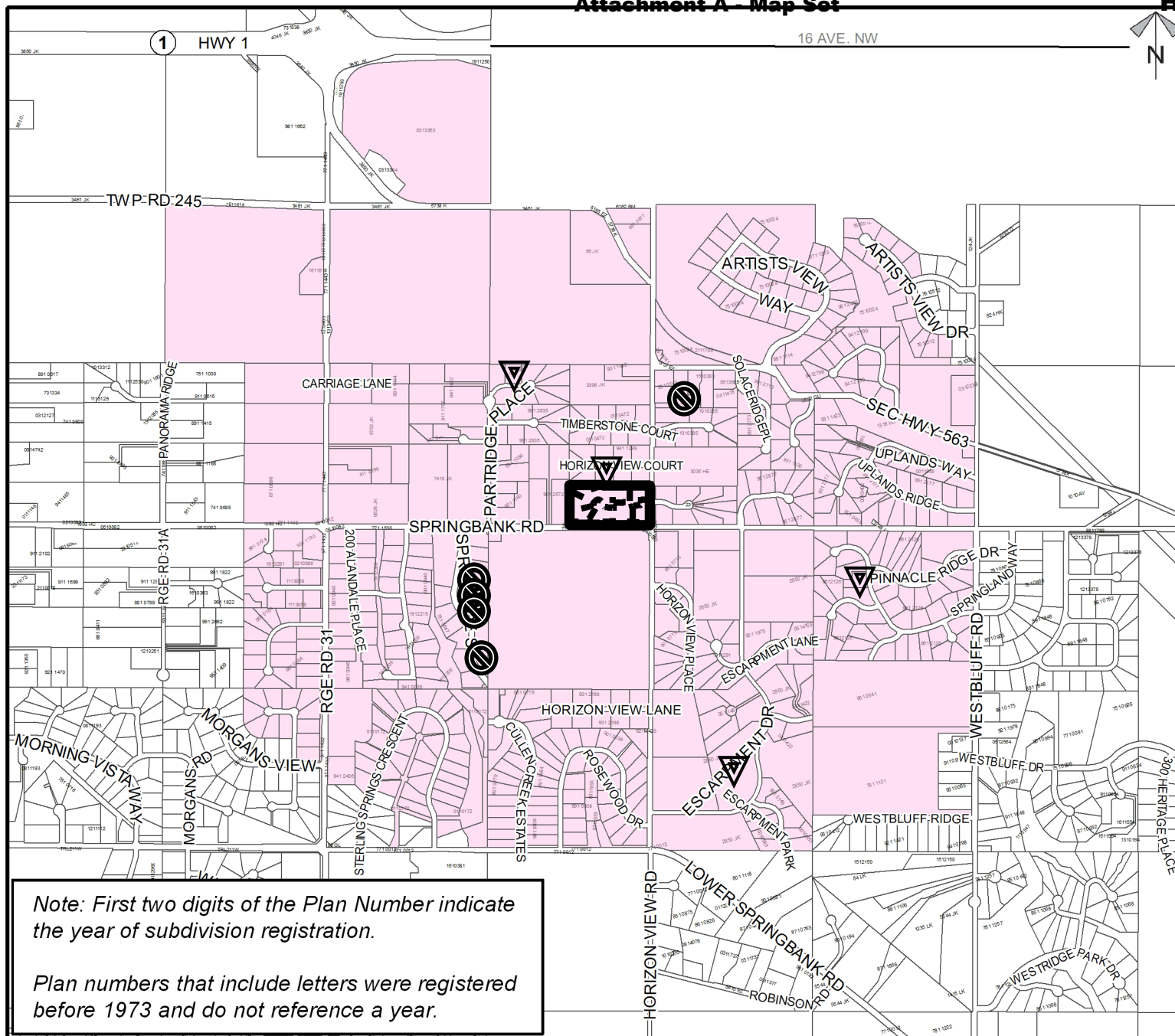


Concerns



Note: First two digits of the Plan Number indicate the year of subdivision registration.

Plan numbers that include letters were registered before 1973 and do not reference a year.



Division: 2
Roll: 04725006
File: PL20220041
Printed: 5/8/2024
Legal: A portion of
SE-25-24-03-W05M