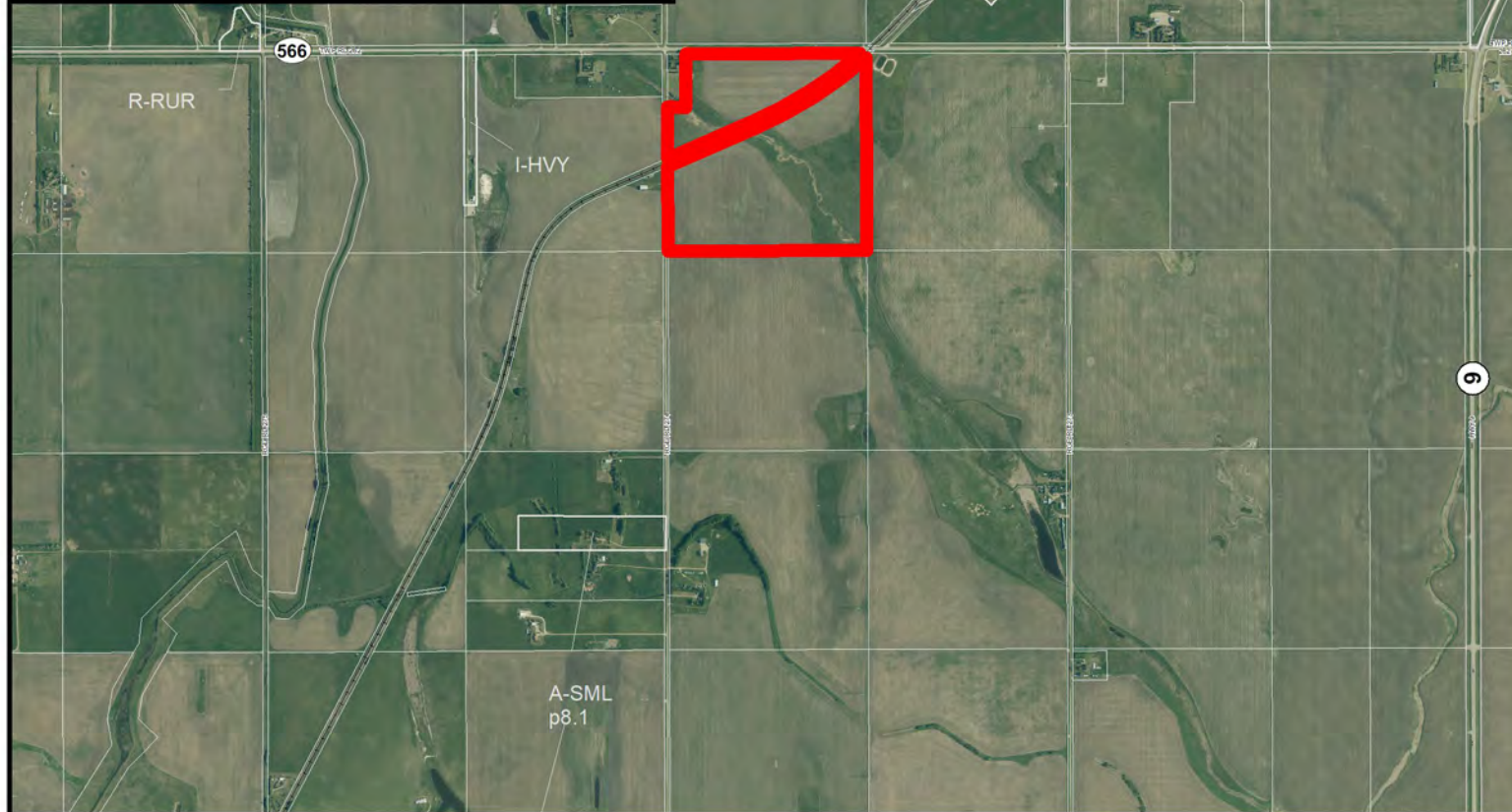
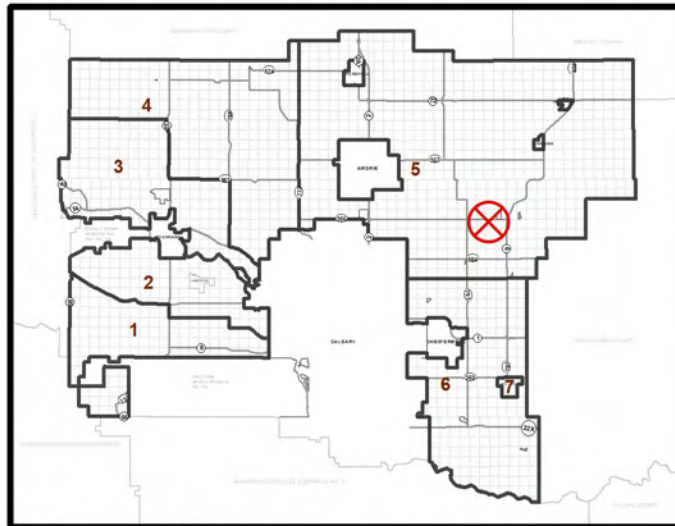




## Location & Context

To redesignate a portion of the subject land from Agricultural, General District (A-GEN) to Agricultural, Small Parcel District (A-SML p 16.0), to facilitate a future subdivision



Division: 5  
 Roll: 06209005  
 File: PL20250003  
 Printed: 1/30/2025  
 Legal: A portion of  
 NW-09-26-27-W04M



## Proposal

To redesignate a portion of the subject land from Agricultural, General District (A-GEN) to Agricultural, Small Parcel District (A-SML p 16.0), to facilitate a future subdivision



Division: 5  
Roll: 06209005  
File: PL20250003  
Printed: 1/30/2025  
Legal: A portion of  
NW-09-26-27-W04M





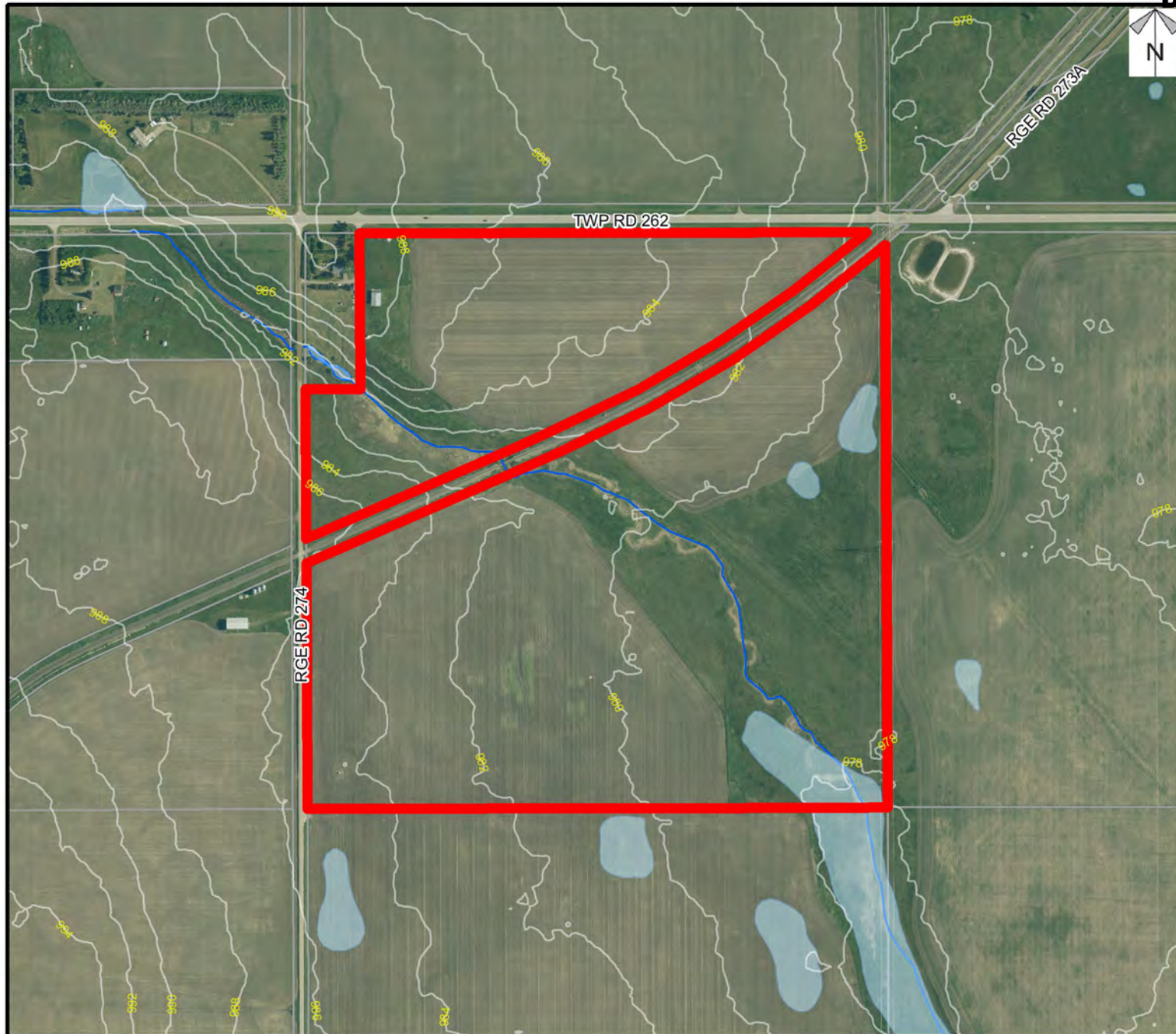
## Environmental

To redesignate a portion of the subject land from Agricultural, General District (A-GEN) to Agricultural, Small Parcel District (A-SML p 16.0), in order to facilitate a future subdivision

### Legend

-  Subject Lands
-  Contour - 2 meters
-  Riparian Setbacks
-  Alberta Wetland Inventory
-  Surface Water

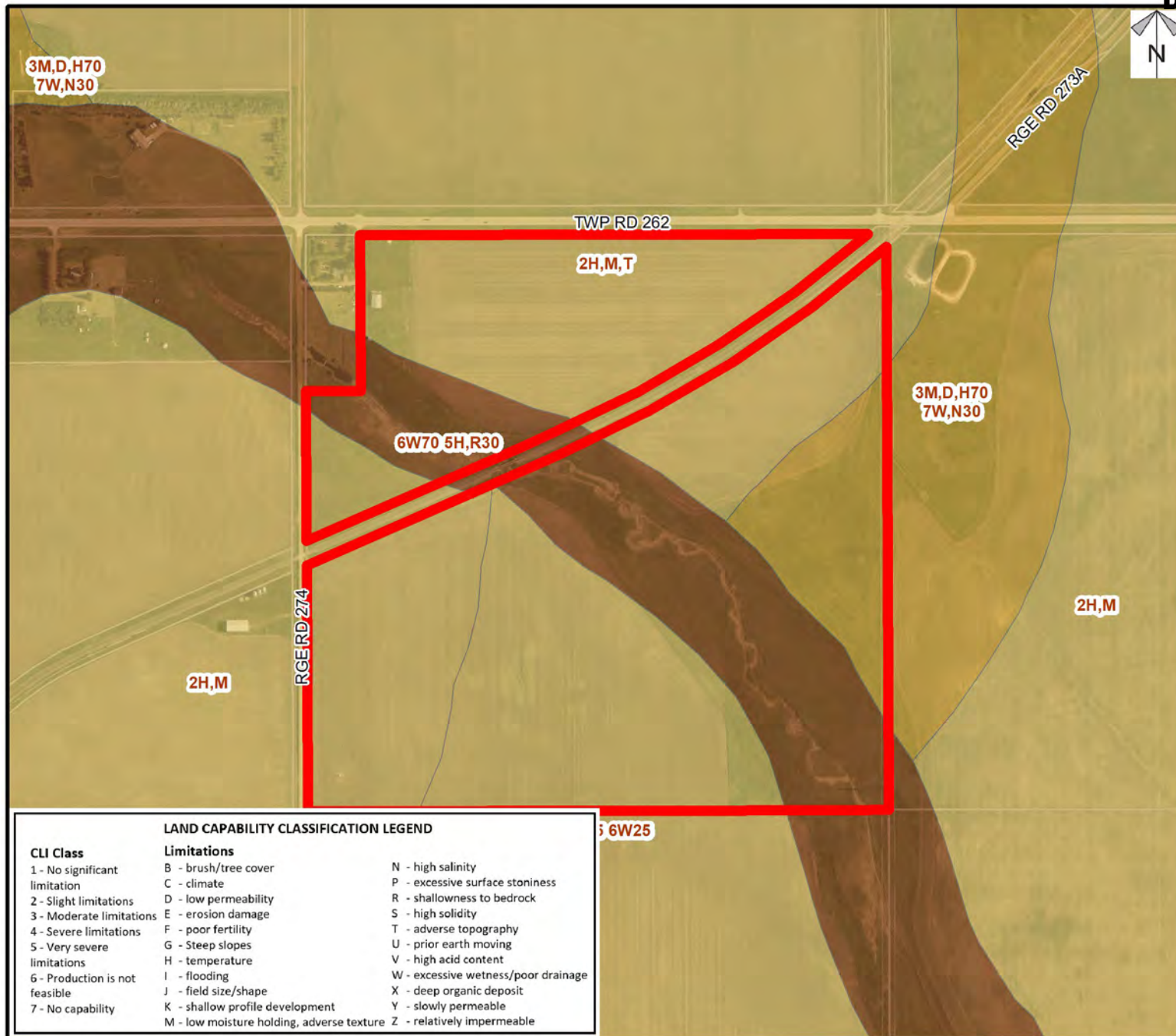
Division: 5  
 Roll: 06209005  
 File: PL20250003  
 Printed: 1/30/2025  
 Legal: A portion of  
 NW-09-26-27-W04M





## Soil Classifications

To redesignate a portion of the subject land from Agricultural, General District (A-GEN) to Agricultural, Small Parcel District (A-SML p 16.0), to facilitate a future subdivision



Division: 5  
 Roll: 06209005  
 File: PL20250003  
 Printed: 1/30/2025  
 Legal: A portion of  
 NW-09-26-27-W04M





**Landowner  
Circulation Area**

To redesignate a portion of the subject land from Agricultural, General District (A-GEN) to Agricultural, Small Parcel District (A-SML p 16.0), to facilitate a future subdivision

### Legend

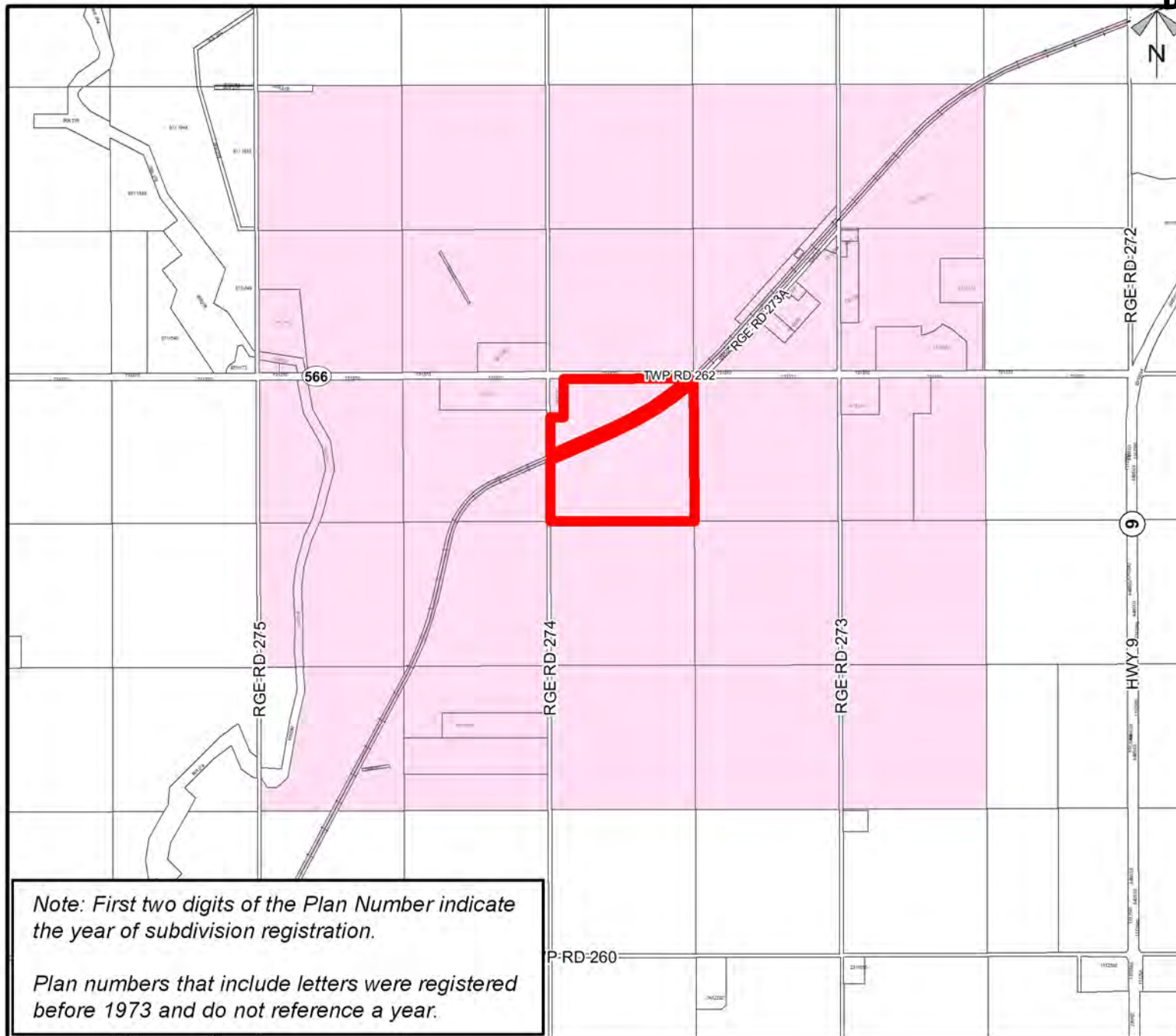
## Support



*Not Support*



Division: 5  
Roll: 06209005  
File: PL20250003  
Printed: 1/30/2025  
Legal: A portion of  
NW-09-26-27-W04M



*Note: First two digits of the Plan Number indicate the year of subdivision registration.*

*Plan numbers that include letters were registered before 1973 and do not reference a year.*