

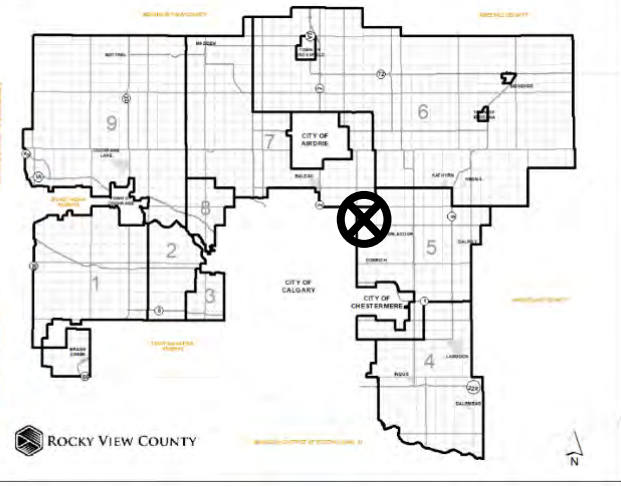


Location & Context

Redesignation Proposal

To redesignate a ± 9.31 hectare (± 23.00 acre) portion of the lands from Agricultural, General District to Business, Live Work District, in order to facilitate the future development of outdoor storage for equipment, recreational vehicles, trucks and trailers.

Division: 5
Roll: 05330003
File: PL20200065
Legal: A portion of NW-30-25-28-W04M
Printed: Jan 29, 2021



CALGARY

COUNTRY HILLS BLVD

564 TWP RD 254

Development Proposal

Redesignation Proposal

To redesignate a ± 9.31 hectare (± 23.00 acre) portion of the lands from Agricultural, General District to Business, Live Work District, in order to facilitate the future development of outdoor storage for equipment, recreational vehicles, trucks and trailers.

CALGARY

*Division: 5
Roll: 05330003
File: PL20200065
Legal: A portion of NW-30-
25-28-W04M
Printed: Jan 29, 2021*



Environmental

Redesignation Proposal

To redesignate a ± 9.31 hectare (± 23.00 acre) portion of the lands from Agricultural, General District to Business, Live Work District, in order to facilitate the future development of outdoor storage for equipment, recreational vehicles, trucks and trailers.

-  Subject Lands
-  Contour - 2 meters
-  Riparian Setbacks
-  Alberta Wetland Inventory
-  Surface Water

Division: 5
 Roll: 05330003
 File: PL20200065
 Legal: A portion of NW-30-25-28-W04M
 Printed: Jan 29, 2021

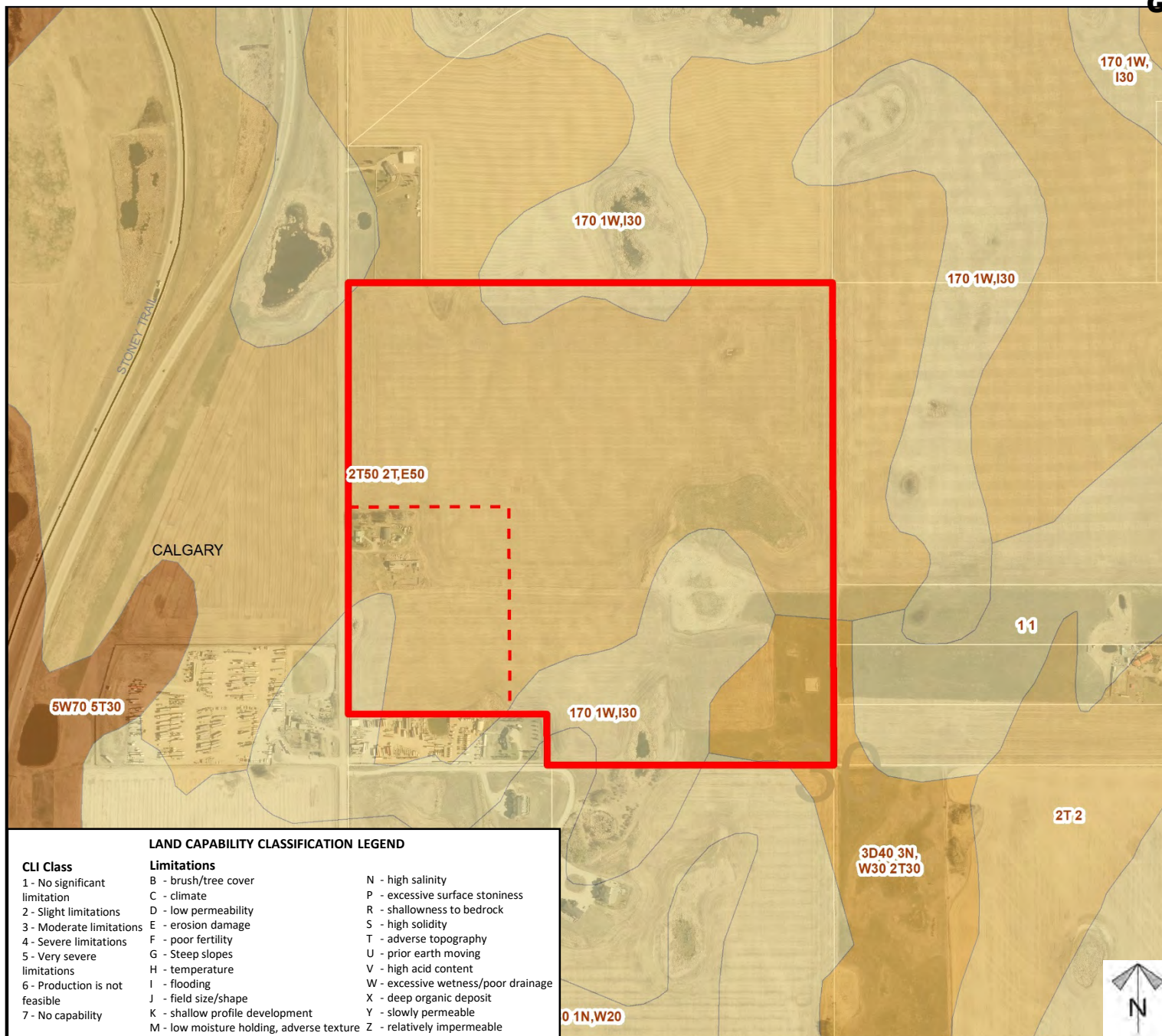
CALGARY

30

Soil Classifications

Redesignation Proposal

To redesignate a ± 9.31 hectare (± 23.00 acre) portion of the lands from Agricultural, General District to Business, Live Work District, in order to facilitate the future development of outdoor storage for equipment, recreational vehicles, trucks and trailers.



LAND CAPABILITY CLASSIFICATION LEGEND

CLI Class

- 1 - No significant limitation
- 2 - Slight limitations
- 3 - Moderate limitations
- 4 - Severe limitations
- 5 - Very severe limitations
- 6 - Production is not feasible
- 7 - No capability

Limitations

- B - brush/tree cover
- C - climate
- D - low permeability
- E - erosion damage
- F - poor fertility
- G - Steep slopes
- H - temperature
- I - flooding
- J - field size/shape
- K - shallow profile development
- M - low moisture holding, adverse texture
- N - high salinity
- P - excessive surface stoniness
- R - shallowness to bedrock
- S - high solidity
- T - adverse topography
- U - prior earth moving
- V - high acid content
- W - excessive wetness/poor drainage
- X - deep organic deposit
- Y - slowly permeable
- Z - relatively impermeable

Division: 5
 Roll: 05330003
 File: PL20200065
 Legal: A portion of NW-30-25-28-W04M
 Printed: Jan 29, 2021



Landowner Circulation Area

Redesignation Proposal

To redesignate a ± 9.31 hectare (± 23.00 acre) portion of the lands from Agricultural, General District to Business, Live Work District, in order to facilitate the future development of outdoor storage for equipment, recreational vehicles, trucks and trailers.

Legend

Support



Opposition



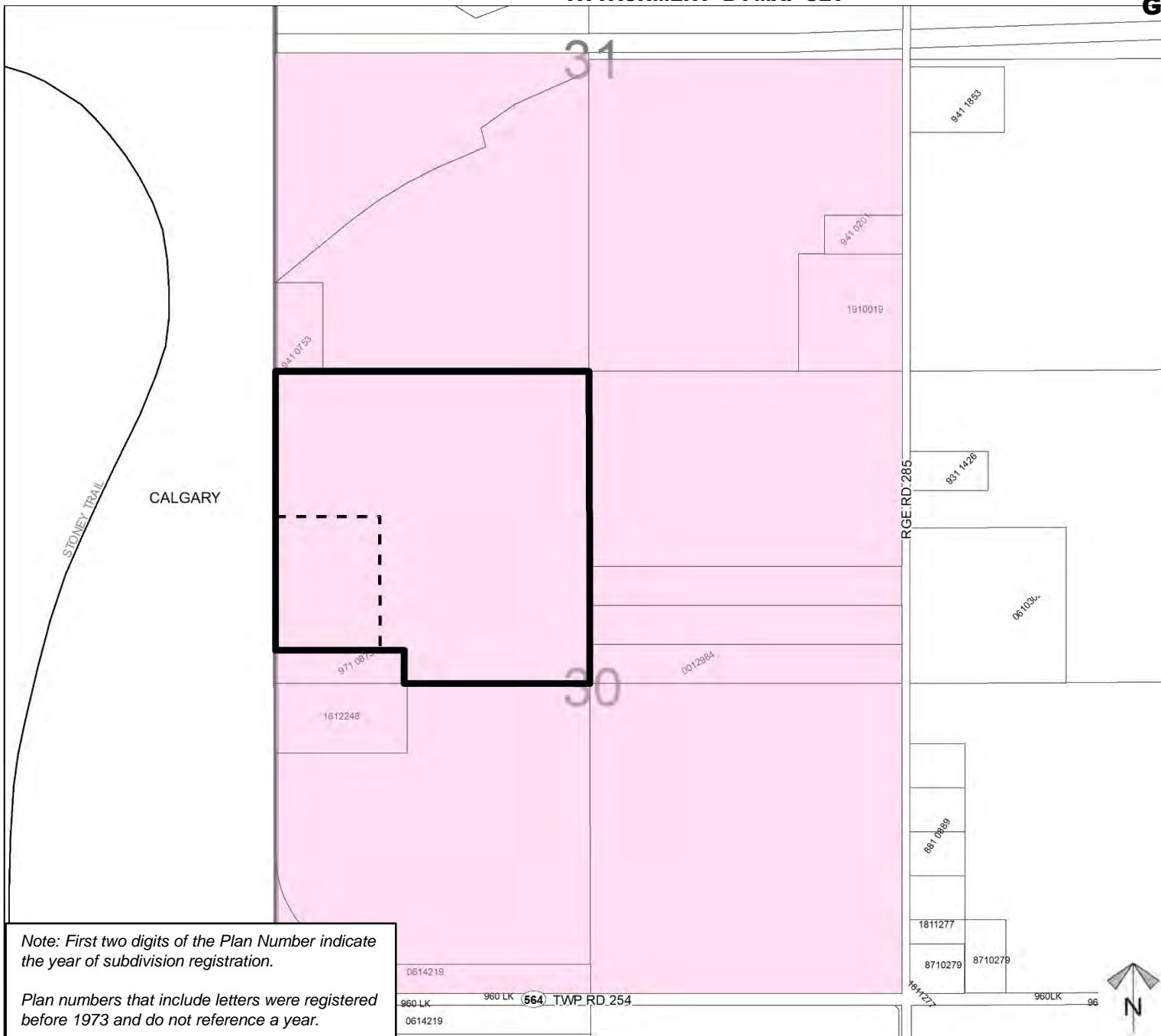
Division: 5

Roll: 05330003

File: PL20200065

Legal: A portion of NW-30-25-28-W04M

Printed: Jan 29, 2021



Note: First two digits of the Plan Number indicate the year of subdivision registration.

Plan numbers that include letters were registered before 1973 and do not reference a year.