



## Location & Context

### DC Amendment Proposal

An amendment to Direct Control District 168 to change the minimum parcel size from 0.98 acres to 1.20 acres, increase the sizing for Accessory Buildings under the Greenspace Cell, and replace Schedule B with an updated parcel plan.

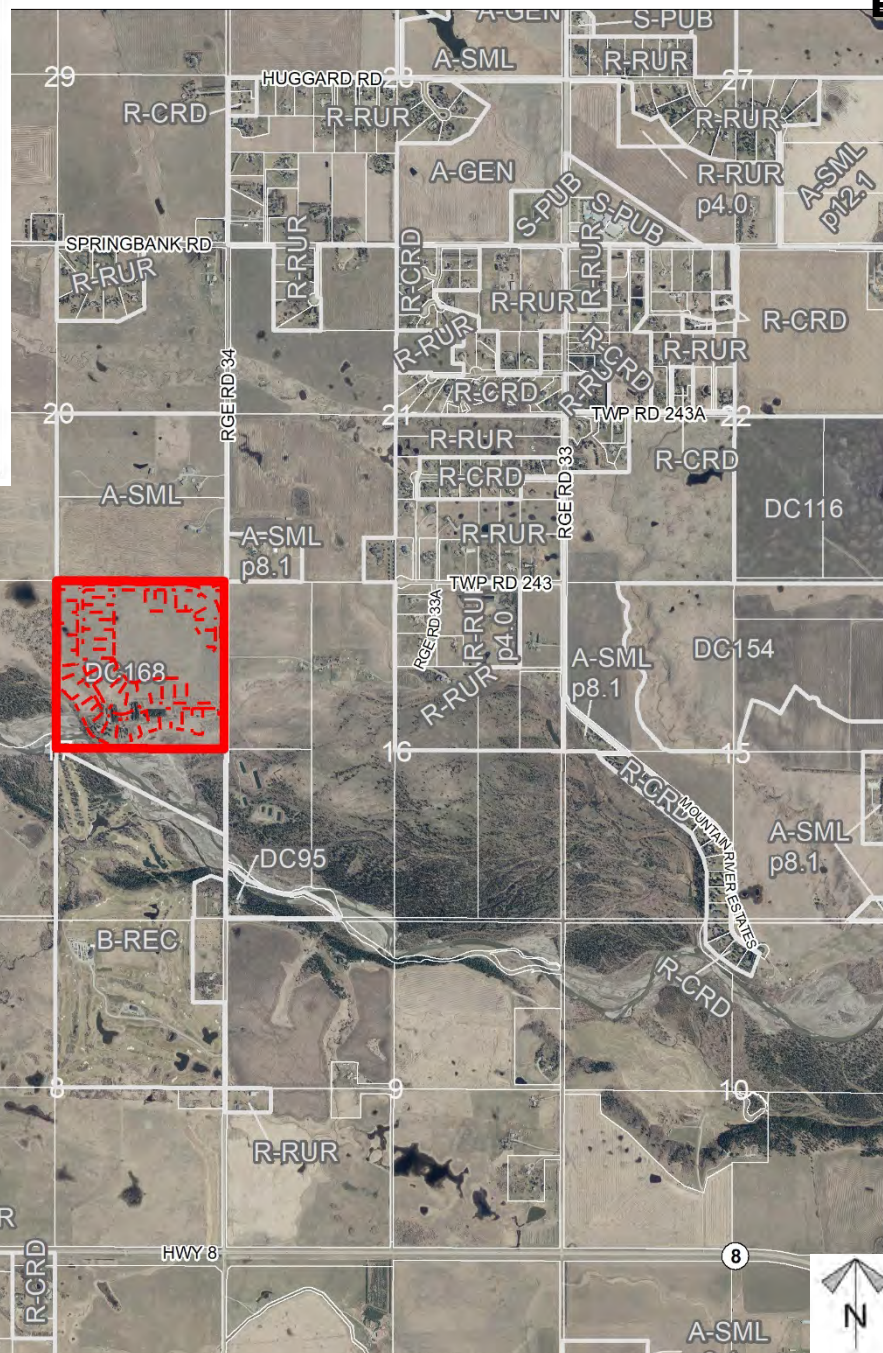
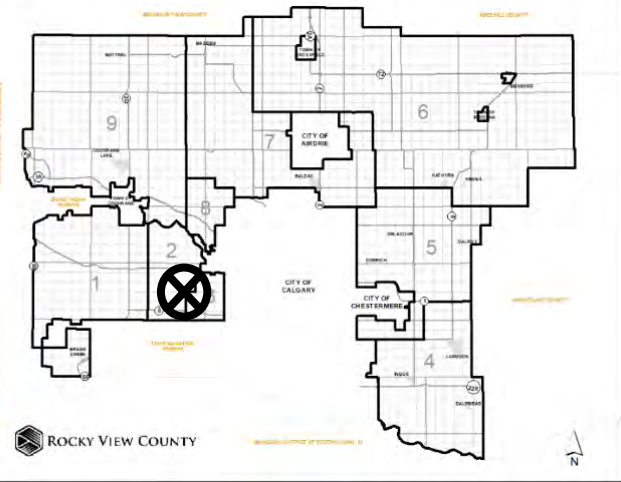
Division: 2

Roll: 04717004/04717005

File: PL20210014

Printed: Feb 5, 2021

Legal: NE-17-24-03-W05M







## Development Proposal

### DC Amendment Proposal

An amendment to Direct Control District 168 to change the minimum parcel size from 0.98 acres to 1.20 acres, increase the sizing for Accessory Buildings under the Greenspace Cell, and replace Schedule B with an updated parcel plan.

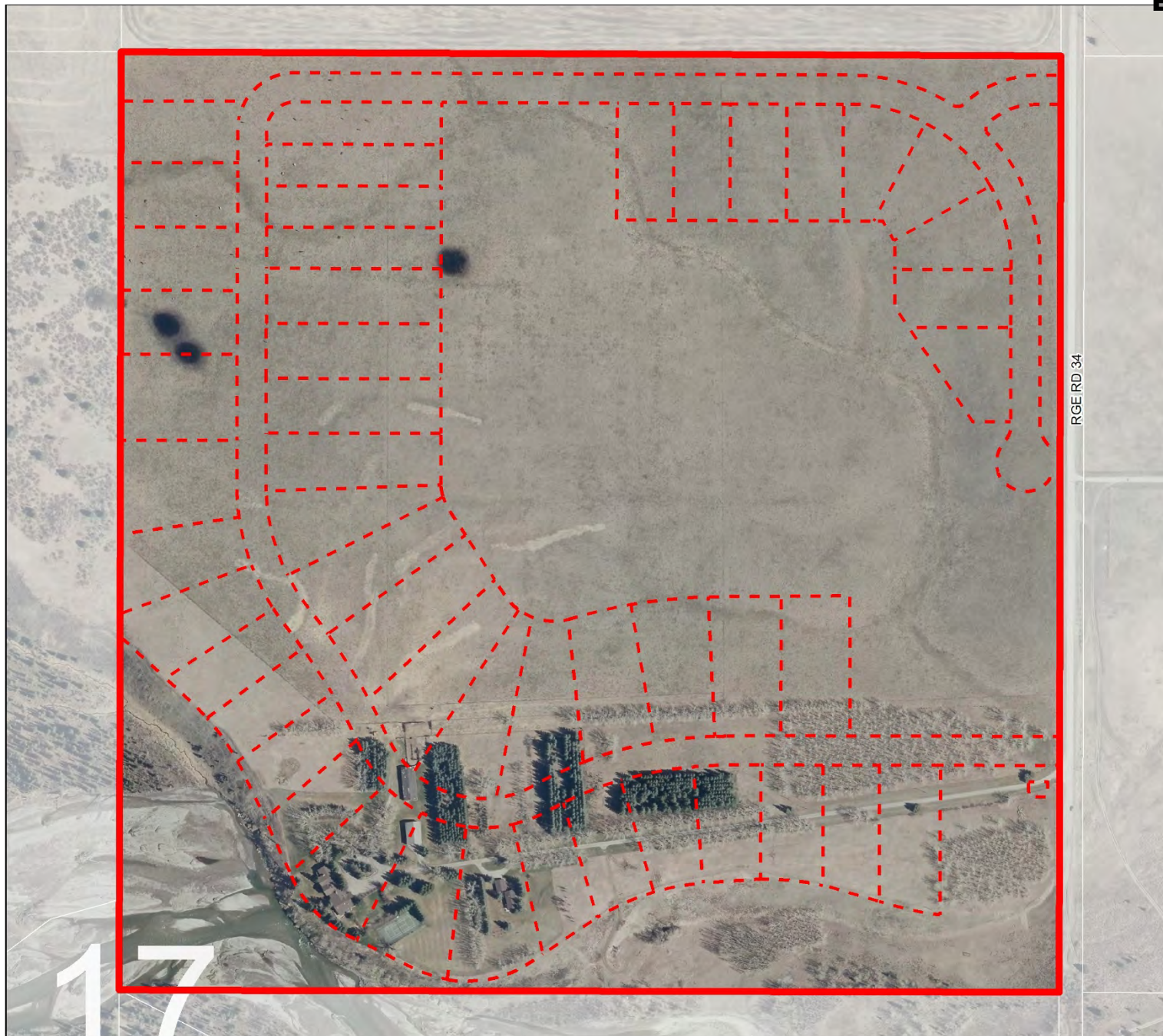
*Division: 2*

*Roll: 04717004/04717005*

*File: PL20210014*

*Printed: Feb 5, 2021*

*Legal: NE-17-24-03-W05M*







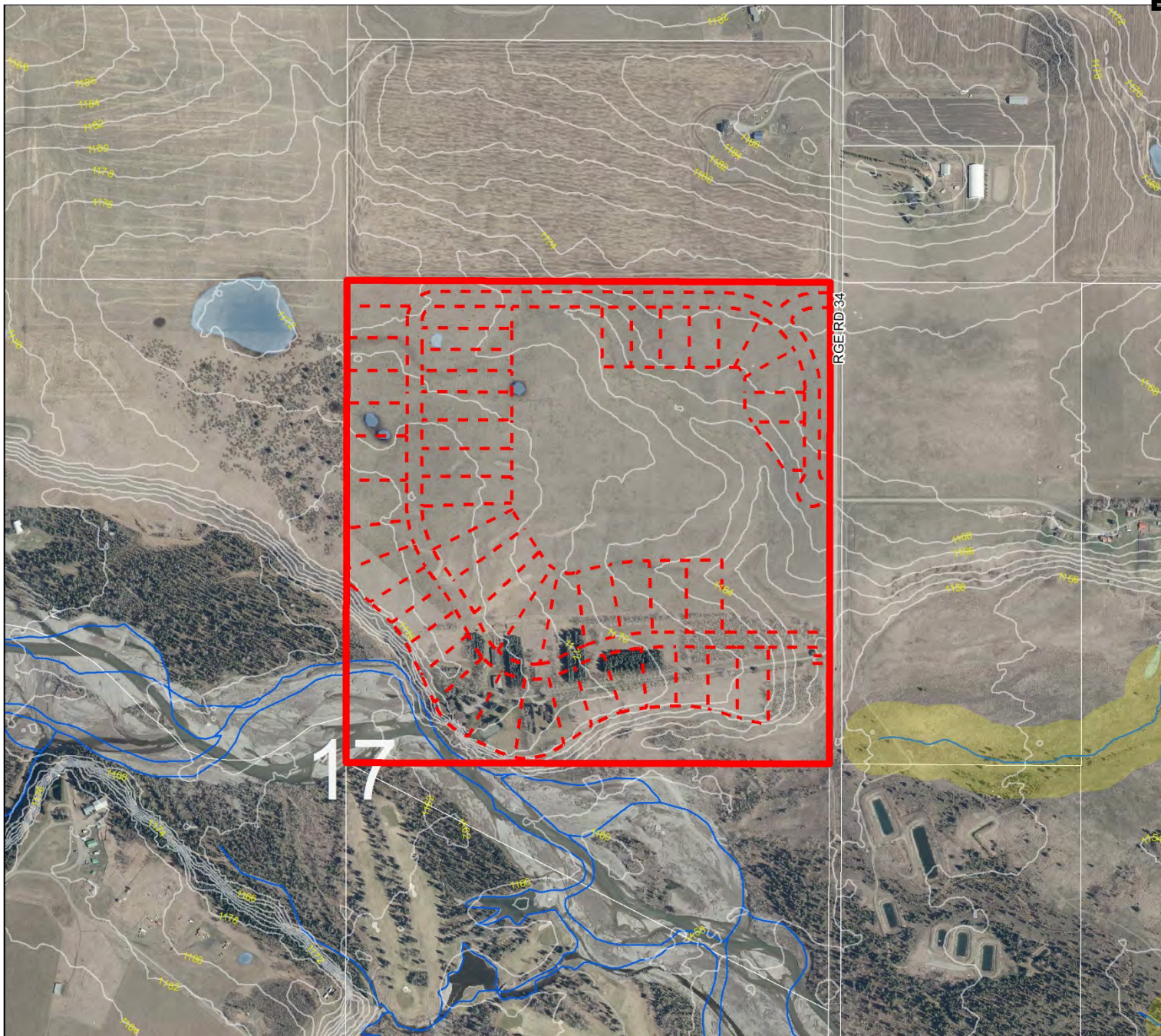
## Environmental

DC Amendment  
Proposal

An amendment to Direct Control District 168 to change the minimum parcel size from 0.98 acres to 1.20 acres, increase the sizing for Accessory Buildings under the Greenspace Cell, and replace Schedule B with an updated parcel plan.

-  Subject Lands
-  Contour - 2 meters
-  Riparian Setbacks
-  Alberta Wetland Inventory
-  Surface Water

Division: 2  
Roll: 04717004/04717005  
File: PL20210014  
Printed: Feb 5, 2021  
Legal: NE-17-24-03-W05M



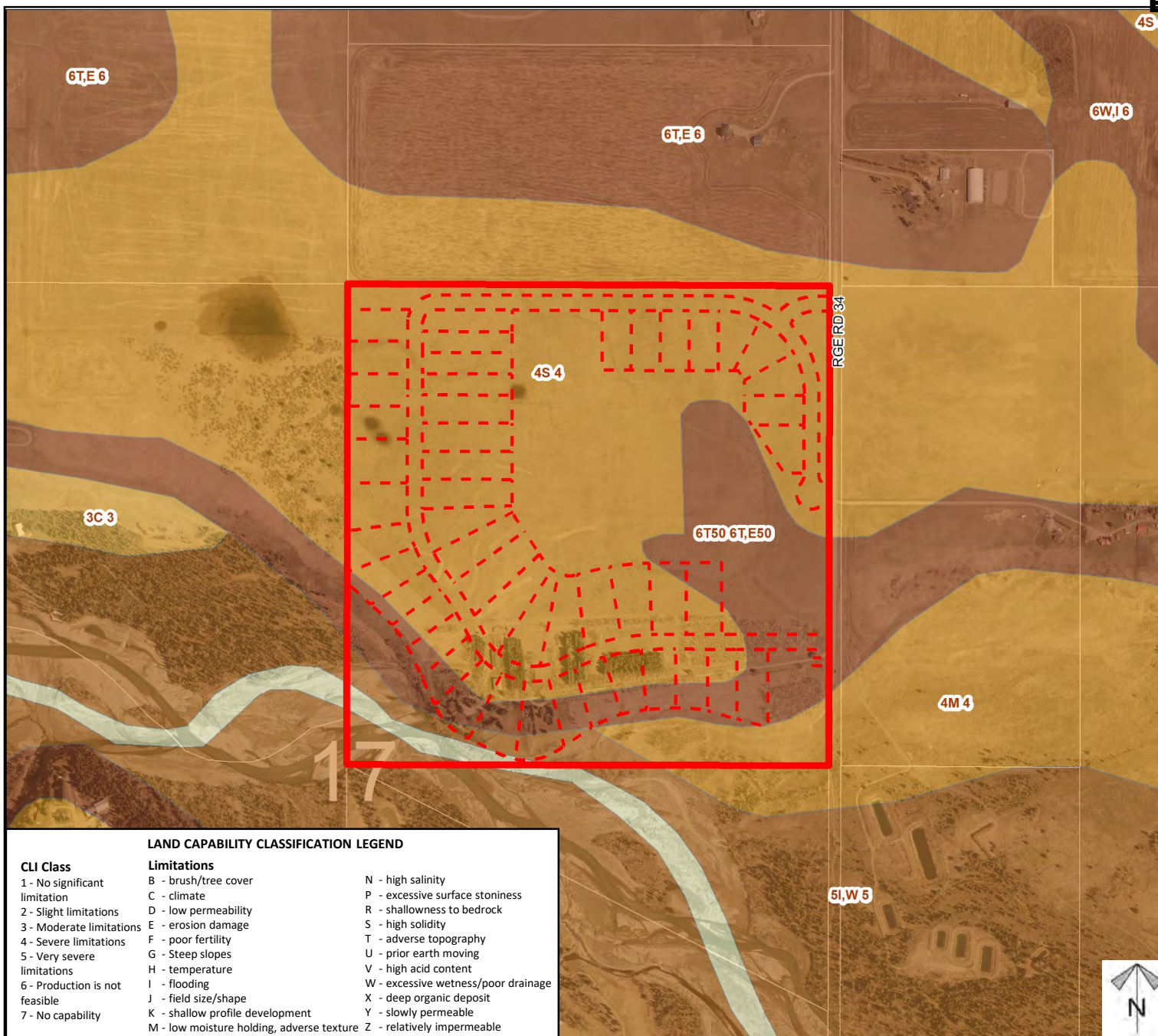




## Soil Classifications

### DC Amendment Proposal

An amendment to Direct Control District 168 to change the minimum parcel size from 0.98 acres to 1.20 acres, increase the sizing for Accessory Buildings under the Greenspace Cell, and replace Schedule B with an updated parcel plan.



#### LAND CAPABILITY CLASSIFICATION LEGEND

##### CLI Class

- 1 - No significant limitation
- 2 - Slight limitations
- 3 - Moderate limitations
- 4 - Severe limitations
- 5 - Very severe limitations
- 6 - Production is not feasible
- 7 - No capability

##### Limitations

- B - brush/tree cover
- C - climate
- D - low permeability
- E - erosion damage
- F - poor fertility
- G - Steep slopes
- H - temperature
- I - flooding
- J - field size/shape
- K - shallow profile development
- M - low moisture holding, adverse texture
- N - high salinity
- P - excessive surface stoniness
- R - shallowness to bedrock
- S - high solidity
- T - adverse topography
- U - prior earth moving
- V - high acid content
- W - excessive wetness/poor drainage
- X - deep organic deposit
- Y - slowly permeable
- Z - relatively impermeable

Division: 2

Roll: 04717004/04717005

File: PL20210014

Printed: Feb 5, 2021

Legal: NE-17-24-03-W05M



## Landowner Circulation Area

### DC Amendment Proposal

An amendment to Direct Control District 168 to change the minimum parcel size from 0.98 acres to 1.20 acres, increase the sizing for Accessory Buildings under the Greenspace Cell, and replace Schedule B with an updated parcel plan.

#### Legend

Support



Opposition



Concern



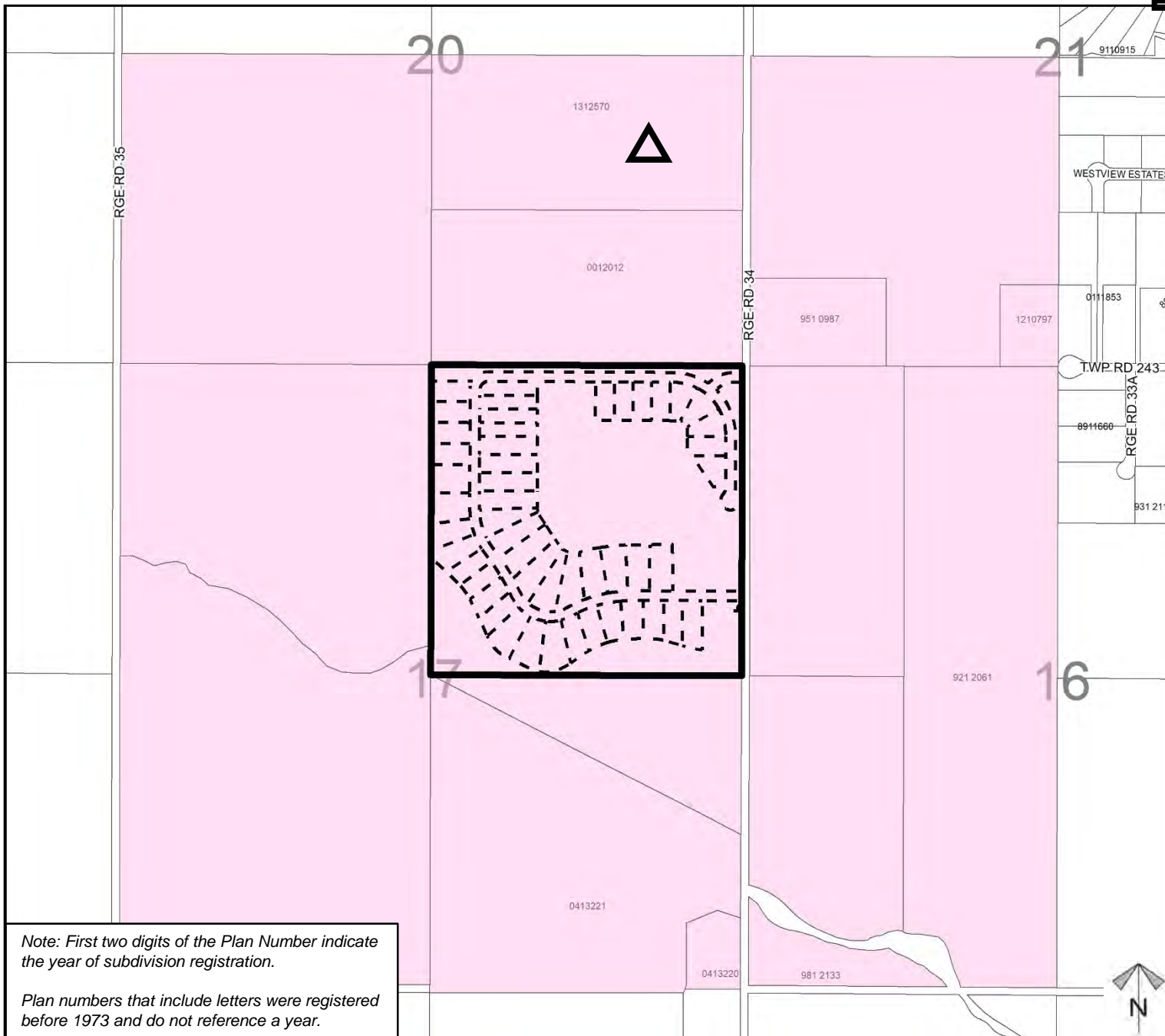
Division: 2

Roll: 04717004/04717005

File: PL20210014

Printed: Feb 5, 2021

Legal: NE-17-24-03-W05M



Note: First two digits of the Plan Number indicate the year of subdivision registration.

Plan numbers that include letters were registered before 1973 and do not reference a year.