



## Location & Context

### Conceptual Scheme and Redesignation Proposal

#### PL20240029

To adopt the Section 25 Conceptual Scheme to provide a policy framework to guide future residential redesignation and subdivision proposals within NE-25-25-03-W05M.

#### PL20240030

To redesignate of Block 2 Plan 2410JK and Block 7 Plan 9410545 within NE-25-25-03-W05M from Agricultural, Small Parcel District (A-SML p8.1) and Residential, Rural District (R-RUR) to Residential, Country Residential District (R-CRD) to facilitate the future subdivision.

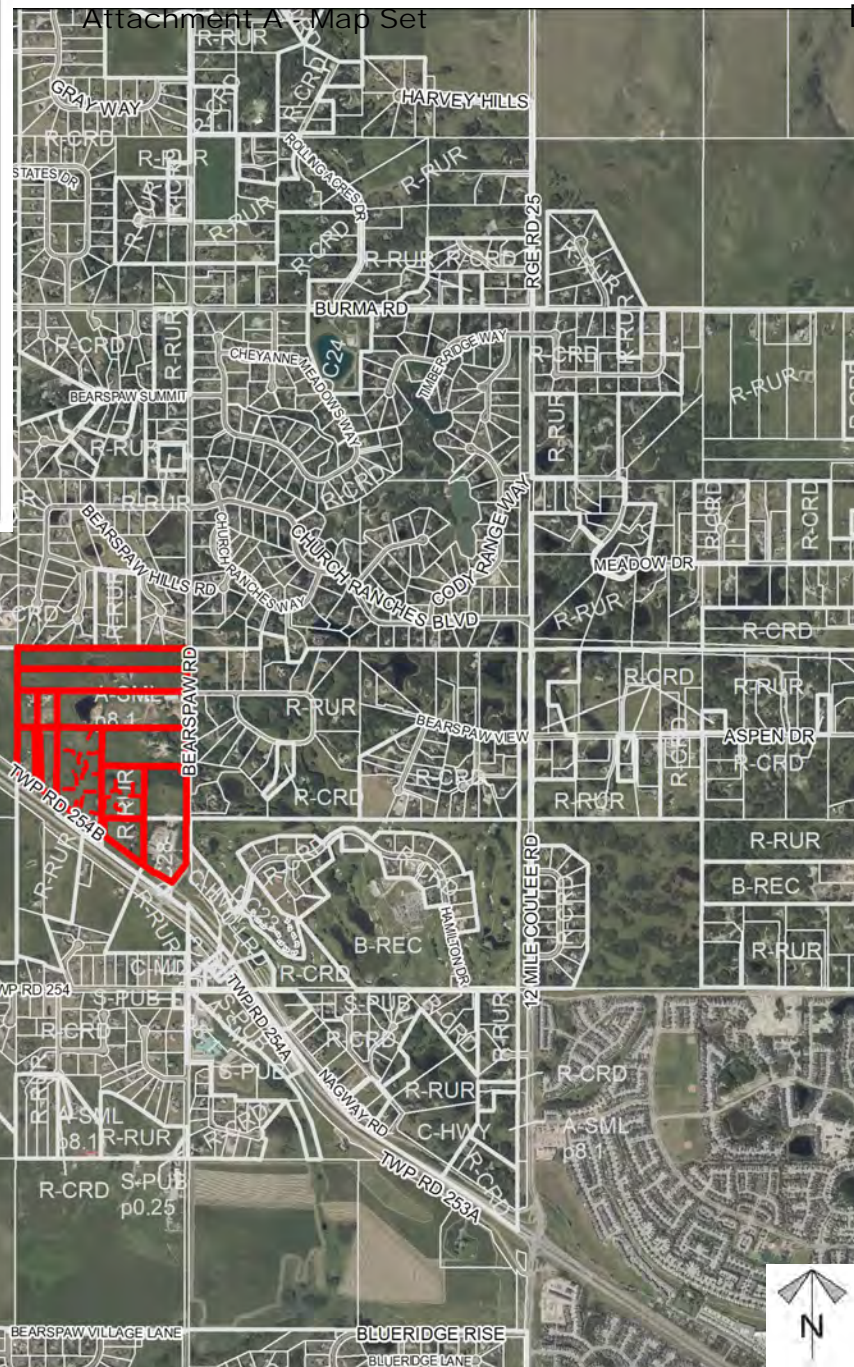
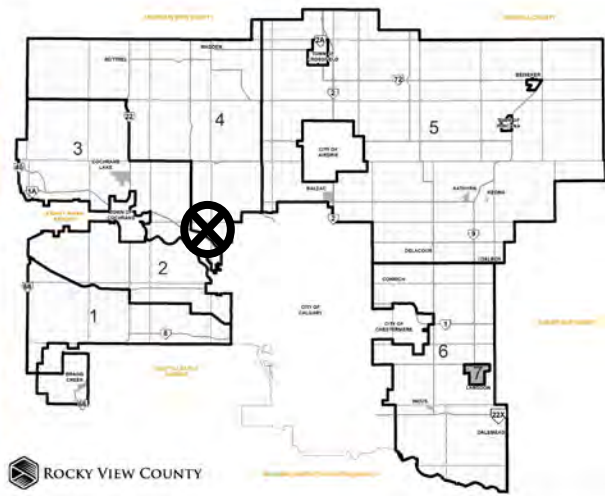
Division: 4

Roll: 05725011, 05725037, 05725008,  
05725006, 05725014, 05725013,  
05725017, 05725032, 05725033,  
05725012, 05725031, 05725042,  
05725007

File: PL20240029 & PL20240030

Printed: Aug 20, 2024

Legal: A portion of NE & SE-25-25-3-  
W5M



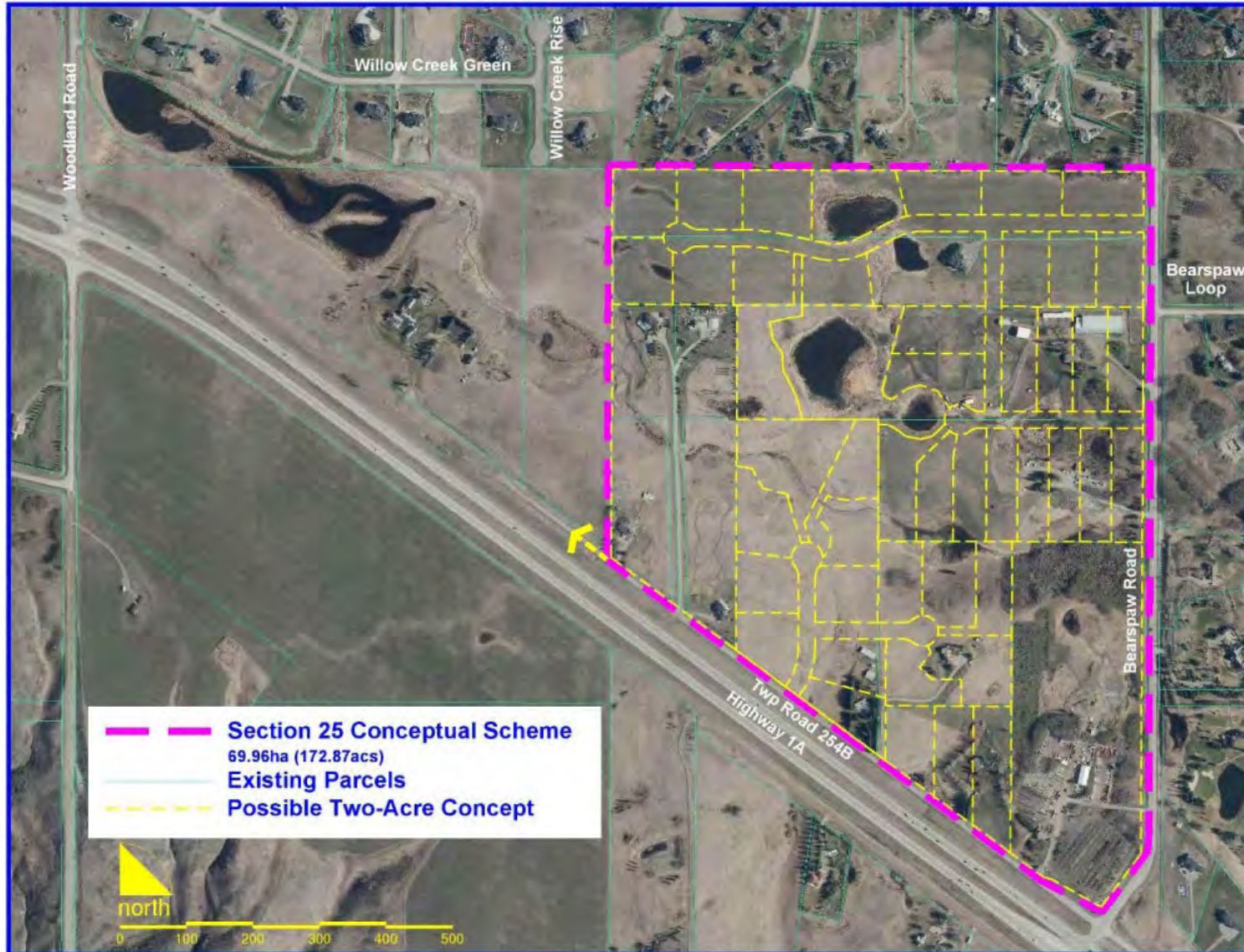




## Conceptual Scheme Proposal

**PL20240029**

To adopt the Section 25 Conceptual Scheme to provide a policy framework to guide future residential redesignation and subdivision proposals within NE-25-25-03-W05M.



Division: 4  
Roll: 05725011, 05725037, 05725008,  
05725006, 05725014, 05725013,  
05725017, 05725032, 05725033,  
05725012, 05725031, 05725042,  
05725007  
File: PL20240029 & PL20240030  
Printed: Aug 20, 2024  
Legal: A portion of NE & SE-25-25-3-  
W5M



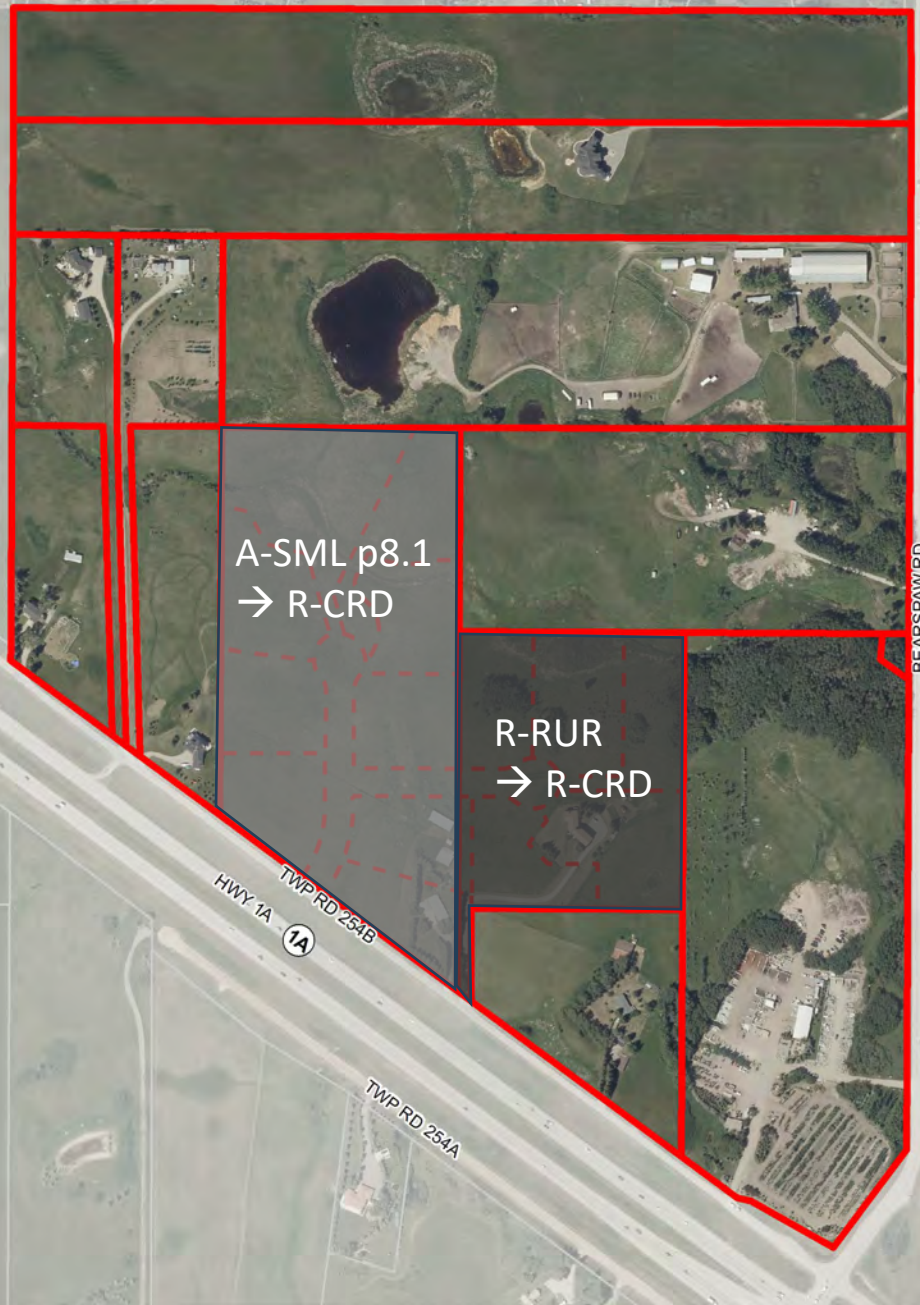




## Development Proposal

**PL20240030**

To redesignate Block 2 Plan 2410JK and Block 7 Plan 9410545 within NE-25-25-03-W05M from Agricultural, Small Parcel District (A-SML p8.1) and Residential, Rural District (R-RUR) to Residential, Country Residential District (R-CRD) to facilitate the future subdivision.



Division: 4

Roll: 05725011, 05725037, 05725008,  
05725006, 05725014, 05725013,  
05725017, 05725032, 05725033,  
05725012, 05725031, 05725042,  
05725007

File: PL20240029 & PL20240030

Printed: Aug 20, 2024

Legal: A portion of NE & SE-25-25-3-  
W5M



## Environmental

### Conceptual Scheme and Redesignation Proposal

#### PL20240029

To adopt the Section 25 Conceptual Scheme to provide a policy framework to guide future residential redesignation and subdivision proposals within NE-25-25-03-W05M.

#### PL20240030

To redesignate of Block 2 Plan 2410JK and Block 7 Plan 9410545 within NE-25-25-03-W05M from Agricultural, Small Parcel District (A-SML p8.1) and Residential, Rural District (R-RUR) to Residential, Country Residential District (R-CRD) to facilitate the future subdivision.

-  Subject Lands
-  Contour - 2 meters
-  Riparian Setbacks
-  Alberta Wetland Inventory
-  Surface Water

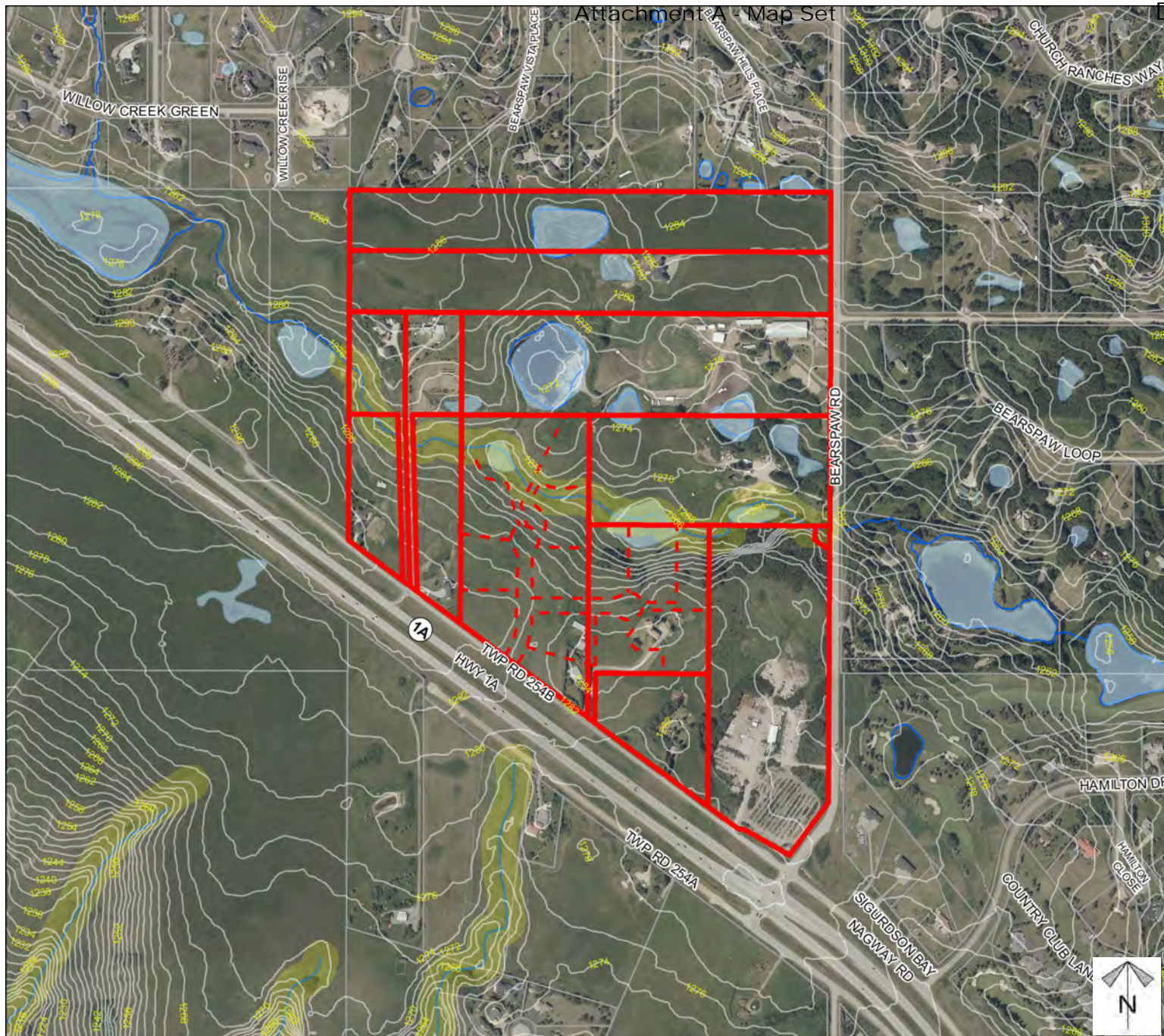
Division: 4

Roll: 05725011, 05725037, 05725008,  
05725006, 05725014, 05725013,  
05725017, 05725032, 05725033,  
05725012, 05725031, 05725042,  
05725007

File: PL20240029 & PL20240030

Printed: Aug 20, 2024

Legal: A portion of NE & SE-25-25-3-W5M







## Soil Classifications

### Conceptual Scheme and Redesignation Proposal

#### PL20240029

To adopt the Section 25 Conceptual Scheme to provide a policy framework to guide future residential redesignation and subdivision proposals within NE-25-25-03-W05M.

#### PL20240030

To redesignate of Block 2 Plan 2410JK and Block 7 Plan 9410545 within NE-25-25-03-W05M from Agricultural, Small Parcel District (A-SML p8.1) and Residential, Rural District (R-RUR) to Residential, Country Residential District (R-CRD) to facilitate the future subdivision.

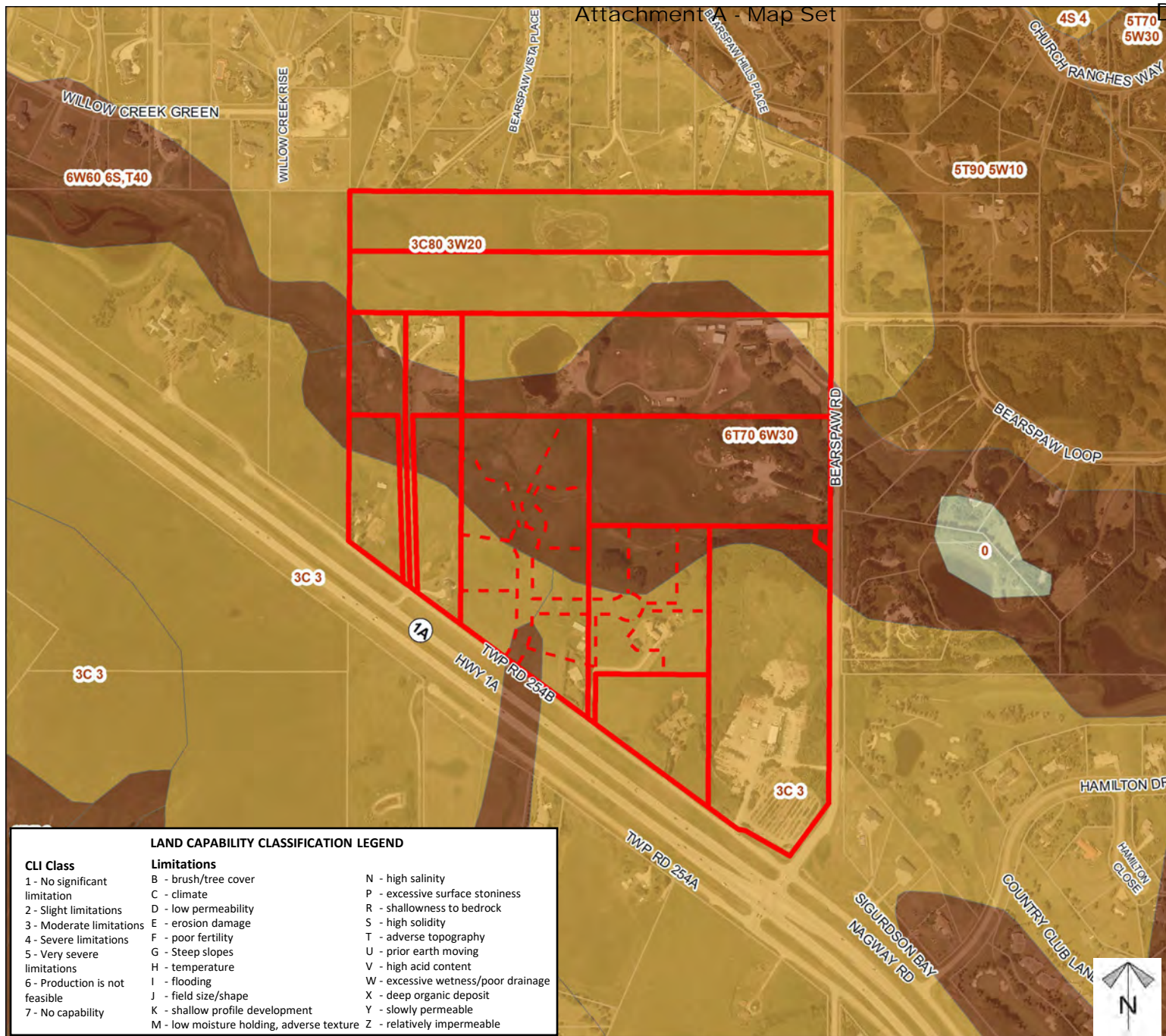
Division: 4

Roll: 05725011, 05725037, 05725008,  
05725006, 05725014, 05725013,  
05725017, 05725032, 05725033,  
05725012, 05725031, 05725042,  
05725007

File: PL20240029 & PL20240030

Printed: Aug 20, 2024

Legal: A portion of NE & SE-25-25-3-  
W5M



#### LAND CAPABILITY CLASSIFICATION LEGEND

##### CLI Class

- 1 - No significant limitation
- 2 - Slight limitations
- 3 - Moderate limitations
- 4 - Severe limitations
- 5 - Very severe limitations
- 6 - Production is not feasible
- 7 - No capability

##### Limitations

- B - brush/tree cover
- C - climate
- D - low permeability
- E - erosion damage
- F - poor fertility
- G - Steep slopes
- H - temperature
- I - flooding
- J - field size/shape
- K - shallow profile development
- M - low moisture holding, adverse texture
- N - high salinity
- P - excessive surface stoniness
- R - shallowness to bedrock
- S - high solidity
- T - adverse topography
- U - prior earth moving
- V - high acid content
- W - excessive wetness/poor drainage
- X - deep organic deposit
- Y - slowly permeable
- Z - relatively impermeable





## Landowner Circulation Area

### Conceptual Scheme and Redesignation Proposal

#### PL20240029

To adopt the Section 25 Conceptual Scheme to provide a policy framework to guide future residential redesignation and subdivision proposals within NE-25-25-03-W05M.

#### PL20240030

To redesignate of Block 2 Plan 2410JK and Block 7 Plan 9410545 within NE-25-25-03-W05M from Agricultural, Small Parcel District (A-SML p8.1) and Residential, Rural District (R-RUR) to Residential, Country Residential District (R-CRD) to facilitate the future subdivision.

#### Legend

Support



Not Support



Division: 4

Roll: 05725011, 05725037, 05725008,  
05725006, 05725014, 05725013,  
05725017, 05725032, 05725033,  
05725012, 05725031, 05725042,  
05725007

File: PL20240029 &amp; PL20240030

Printed: Aug 20, 2024

Legal: A portion of NE &amp; SE-25-25-3-W5M

