



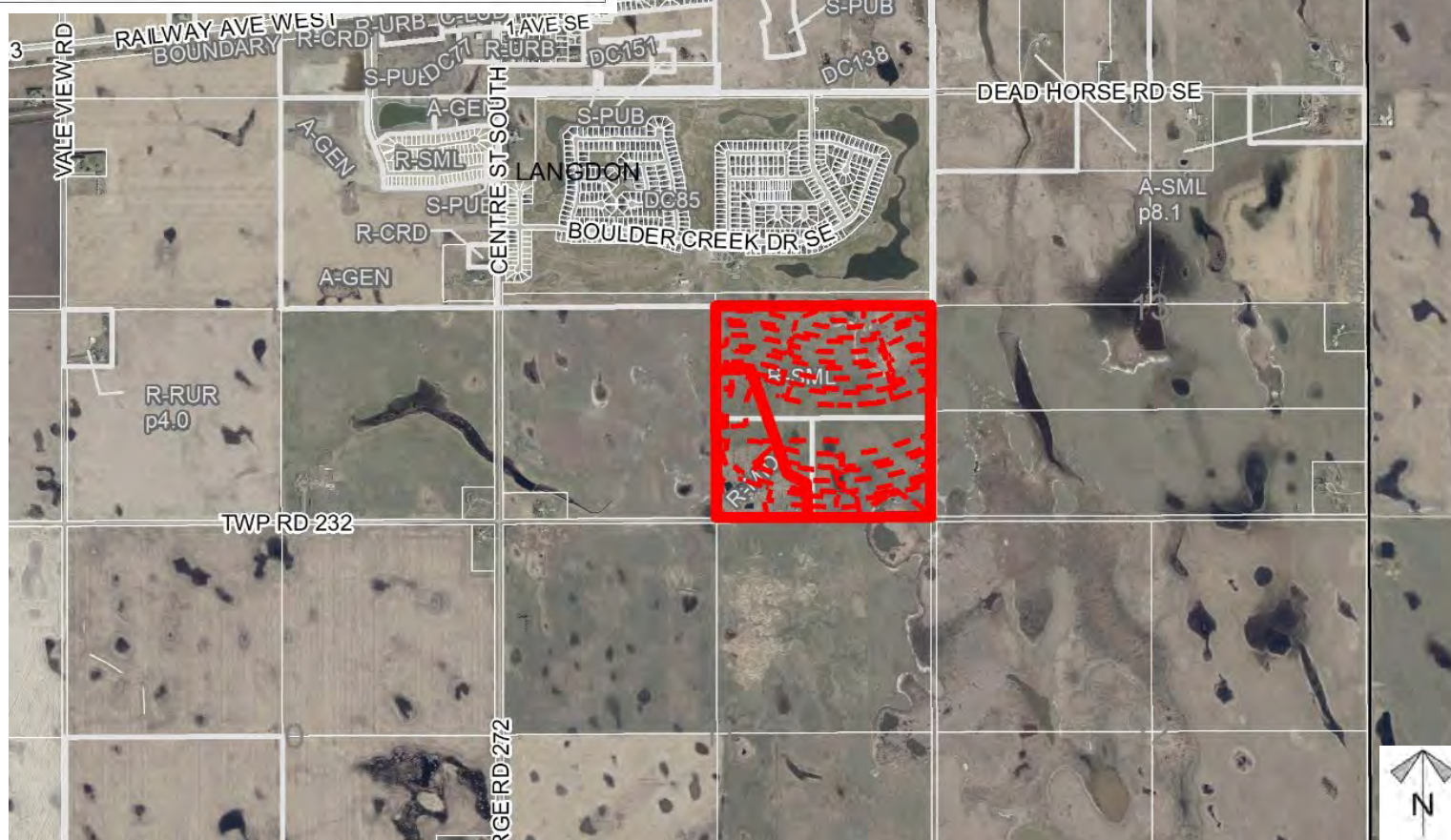
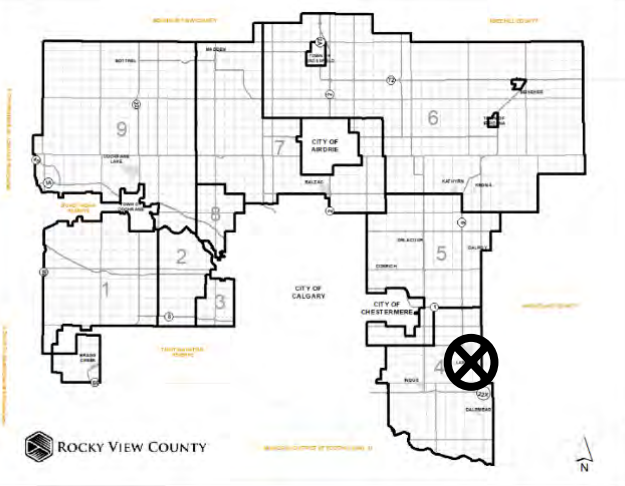
Location & Context

Policy Amendment Proposal

To amend the Settler's Green Conceptual Scheme, in order to reduce the industrial area, increase residential and commercial area, and replace a portion of open space with a watercourse.

Division: 4
Roll: 03214001 & 03214009
File: PL20210008
Legal: SE-14-23-27-W04M

Printed: Mar 1, 2021





Settler's Green Conceptual Scheme (Development Concept)

Settler's Green Conceptual Scheme

Policy Amendment Proposal

To amend the Settler's Green Conceptual Scheme, in order to reduce the industrial area, increase residential and commercial area, and replace a portion of open space with a watercourse.



Division: 4
Roll: 03214001 & 03214009
File: PL20210008
Legal: SE-14-23-27-W04M

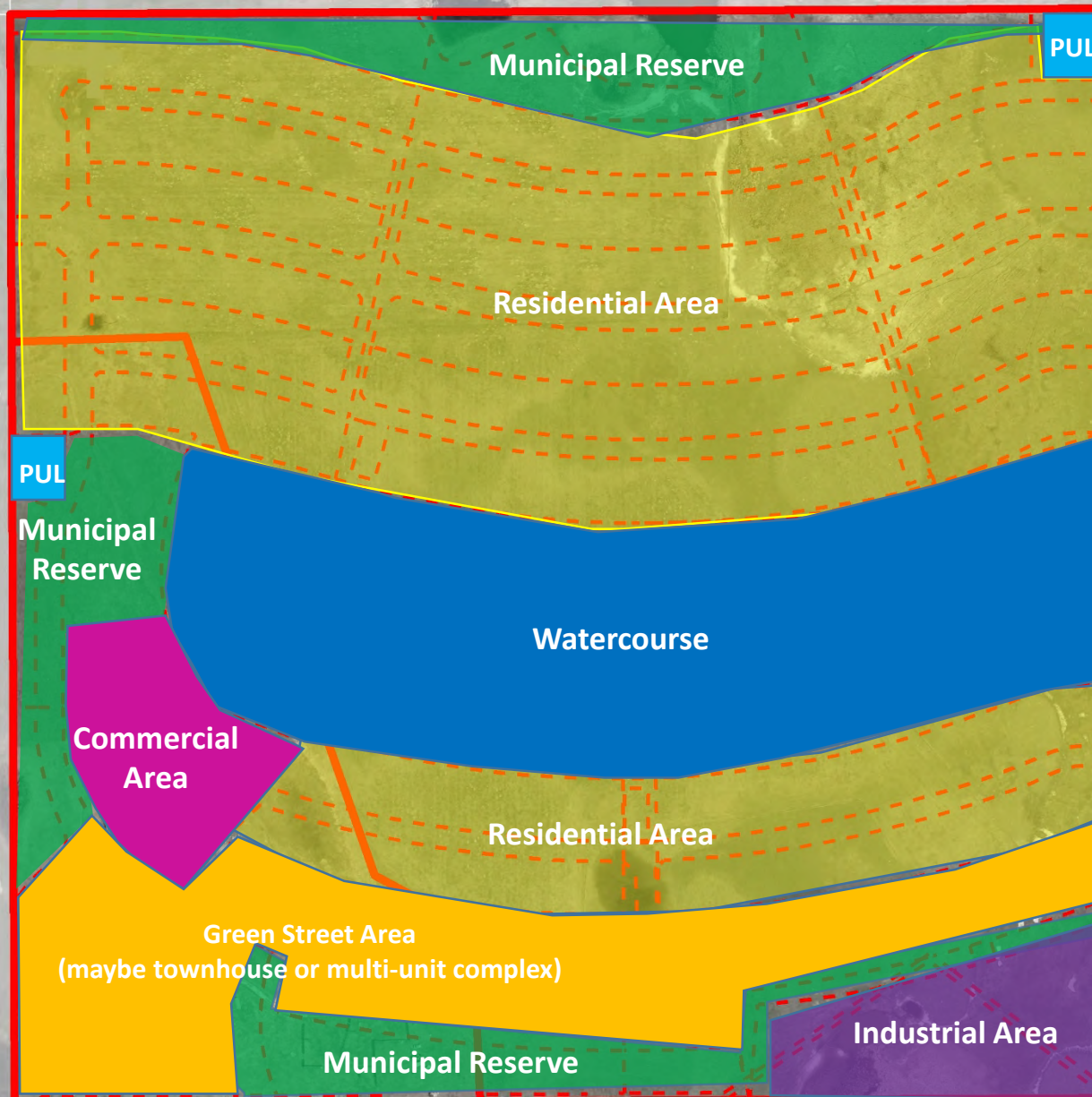
Printed: Mar 1, 2021



Proposed New Development Concept

Policy Amendment Proposal

To amend the Settler's Green Conceptual Scheme, in order to reduce the industrial area, increase residential and commercial area, and replace a portion of open space with a watercourse.



TWP RD 232

Division: 4
Roll: 03214001 & 03214009
File: PL20210008
Legal: SE-14-23-27-W04M

Printed: Mar 1, 2021



Environmental

**Policy Amendment
Proposal**

To amend the Settler's Green Conceptual Scheme, in order to reduce the industrial area, increase residential and commercial area, and replace a portion of open space with a watercourse.



-  Subject Lands
-  Contour - 2 meters
-  Riparian Setbacks
-  Alberta Wetland Inventory
-  Surface Water

Division: 4
 Roll: 03214001 & 03214009
 File: PL20210008
 Legal: SE-14-23-27-W04M

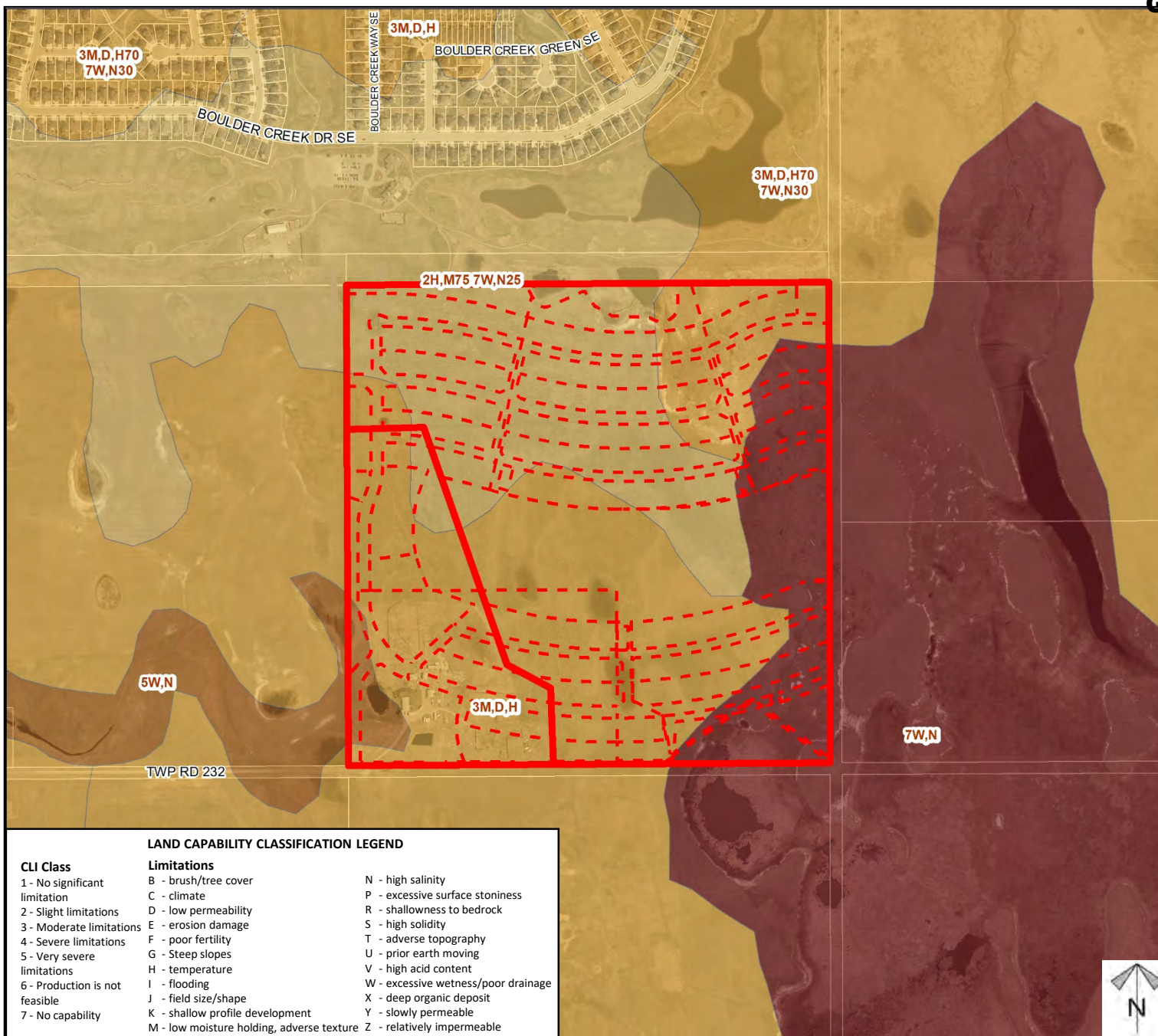
Printed: Mar 1, 2021



Soil Classifications

Policy Amendment Proposal

To amend the Settler's Green Conceptual Scheme, in order to reduce the industrial area, increase residential and commercial area, and replace a portion of open space with a watercourse.



Division: 4
Roll: 03214001 & 03214009
File: PL20210008
Legal: SE-14-23-27-W04M

Printed: Mar 1, 2021

Landowner Circulation Area

Policy Amendment Proposal

To amend the Settler's Green Conceptual Scheme, in order to reduce the industrial area, increase residential and commercial area, and replace a portion of open space with a watercourse.

Legend

Support



Opposition



Division: 4
 Roll: 03214001 & 03214009
 File: PL20210008
 Legal: SE-14-23-27-W04M

Printed: Mar 1, 2021

