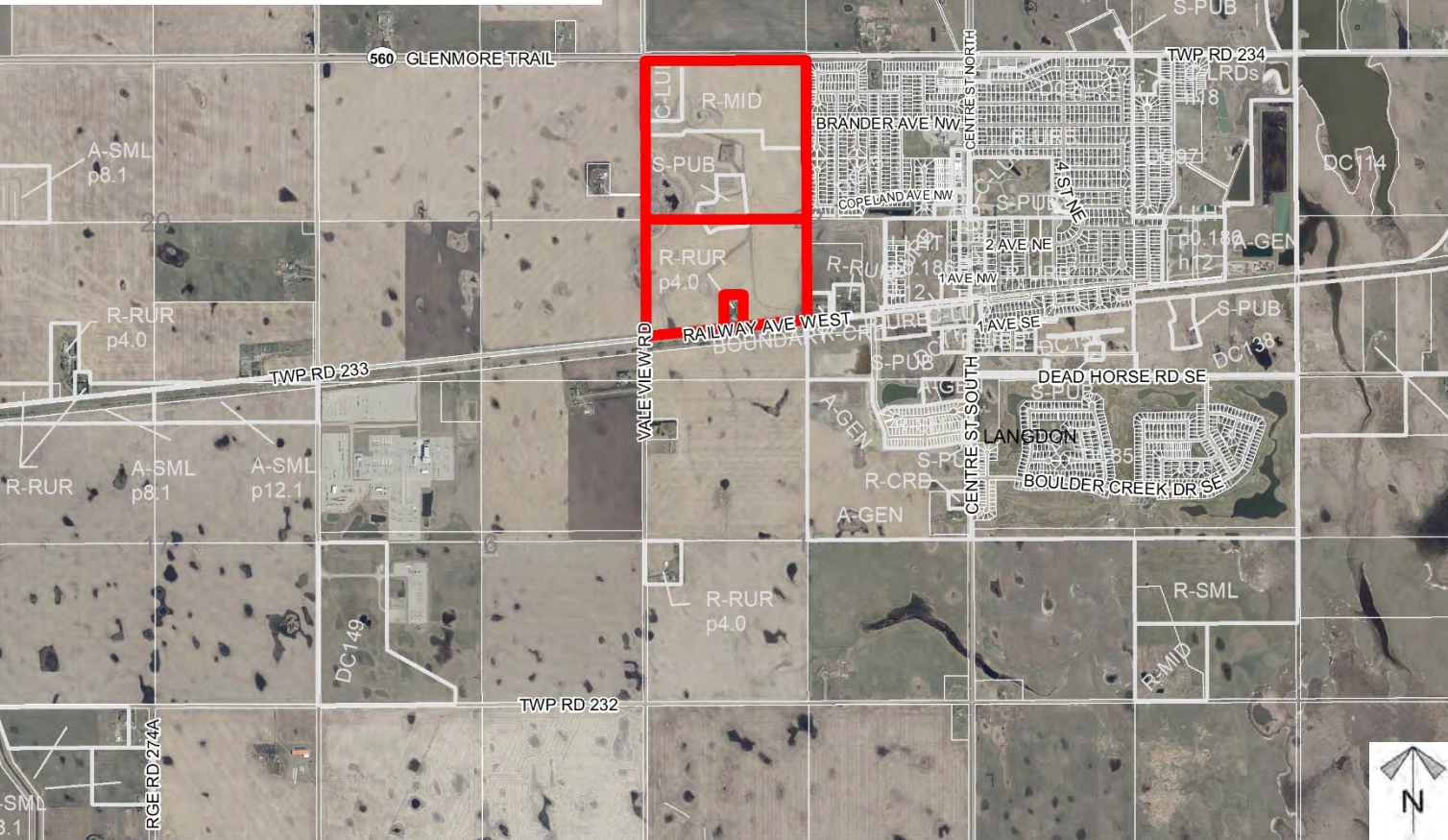
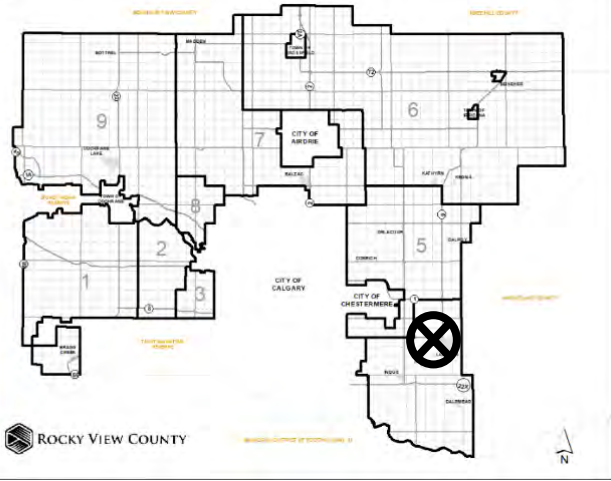


Location
 & Context

Redesignation Proposal

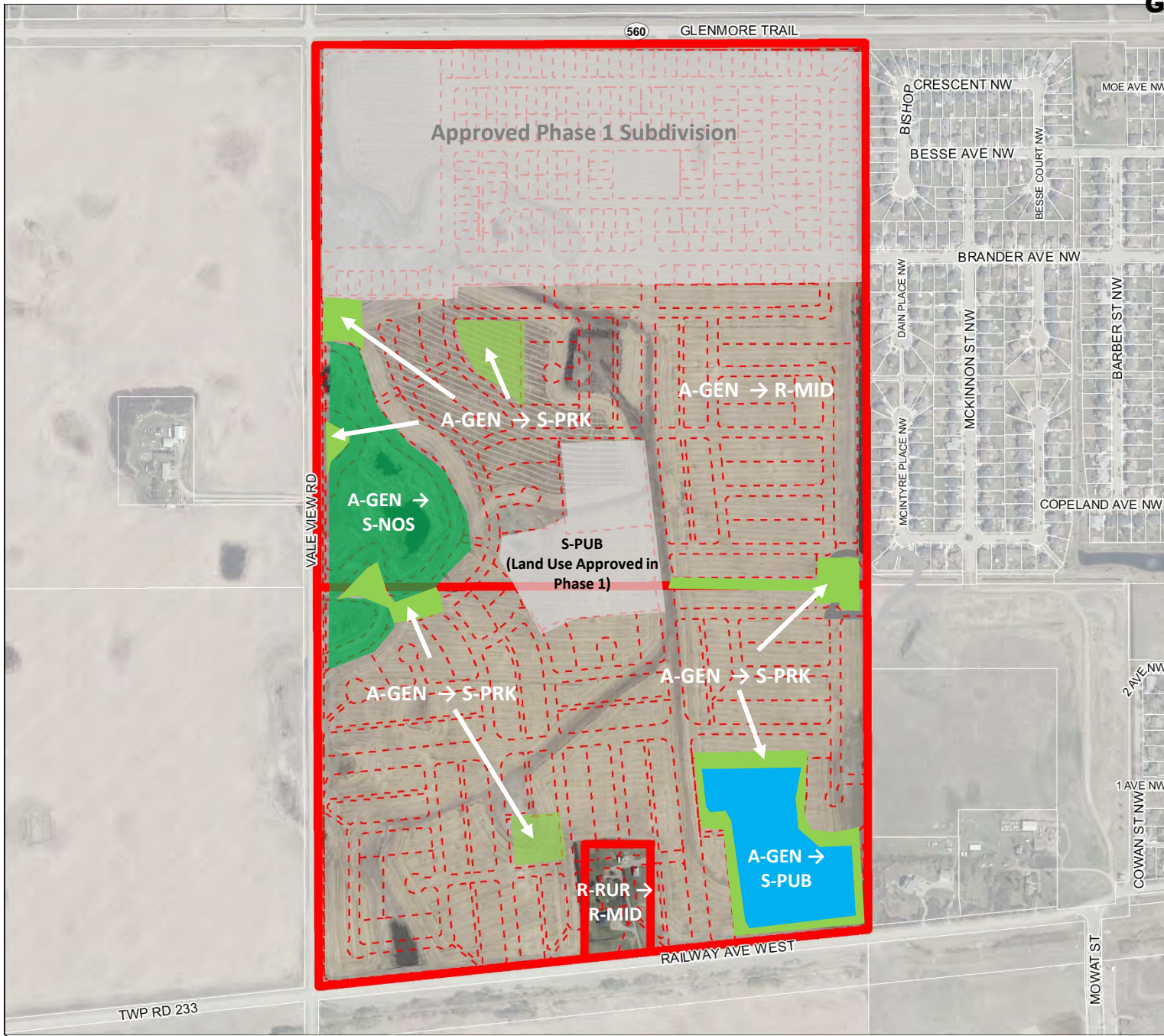
To redesignate the remainder lands from Agricultural, General District (A-GEN) and Residential, Rural District (R-RUR) to Residential, Mid-Density Urban District (R-MID), Special, Parks and Recreation District (S-PRK), Special, Natural Open Space District (S-NOS), and Special, Public Service District (S-PUB), in order to facilitate future phases of Painted Sky Development.



Development Proposal

Redesignation Proposal

To redesignate the remainder lands from Agricultural, General District (A-GEN) and Residential, Rural District (R-RUR) to Residential, Mid-Density Urban District (R-MID), Special, Parks and Recreation District (S-PRK), Special, Natural Open Space District (S-NOS), and Special, Public Service District (S-PUB), in order to facilitate future phases of Painted Sky Development.

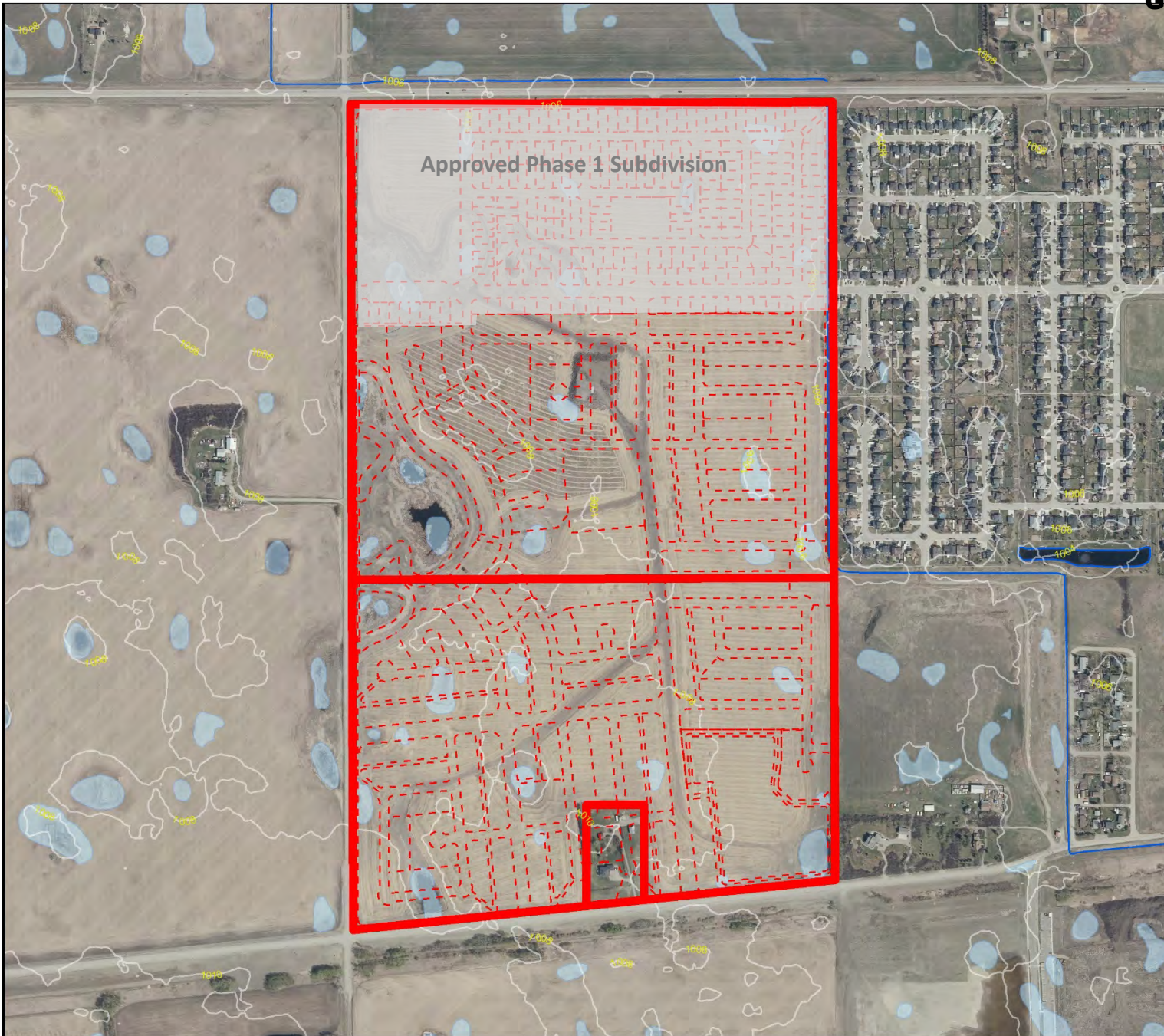


Environmental

Redesignation Proposal

To redesignate the remainder lands from Agricultural, General District (A-GEN) and Residential, Rural District (R-RUR) to Residential, Mid-Density Urban District (R-MID), Special, Parks and Recreation District (S-PRK), Special, Natural Open Space District (S-NOS), and Special, Public Service District (S-PUB), in order to facilitate future phases of Pointed Sky.

-  Subject Lands
-  Contour - 2 meters
-  Riparian Setbacks
-  Alberta Wetland Inventory
-  Surface Water

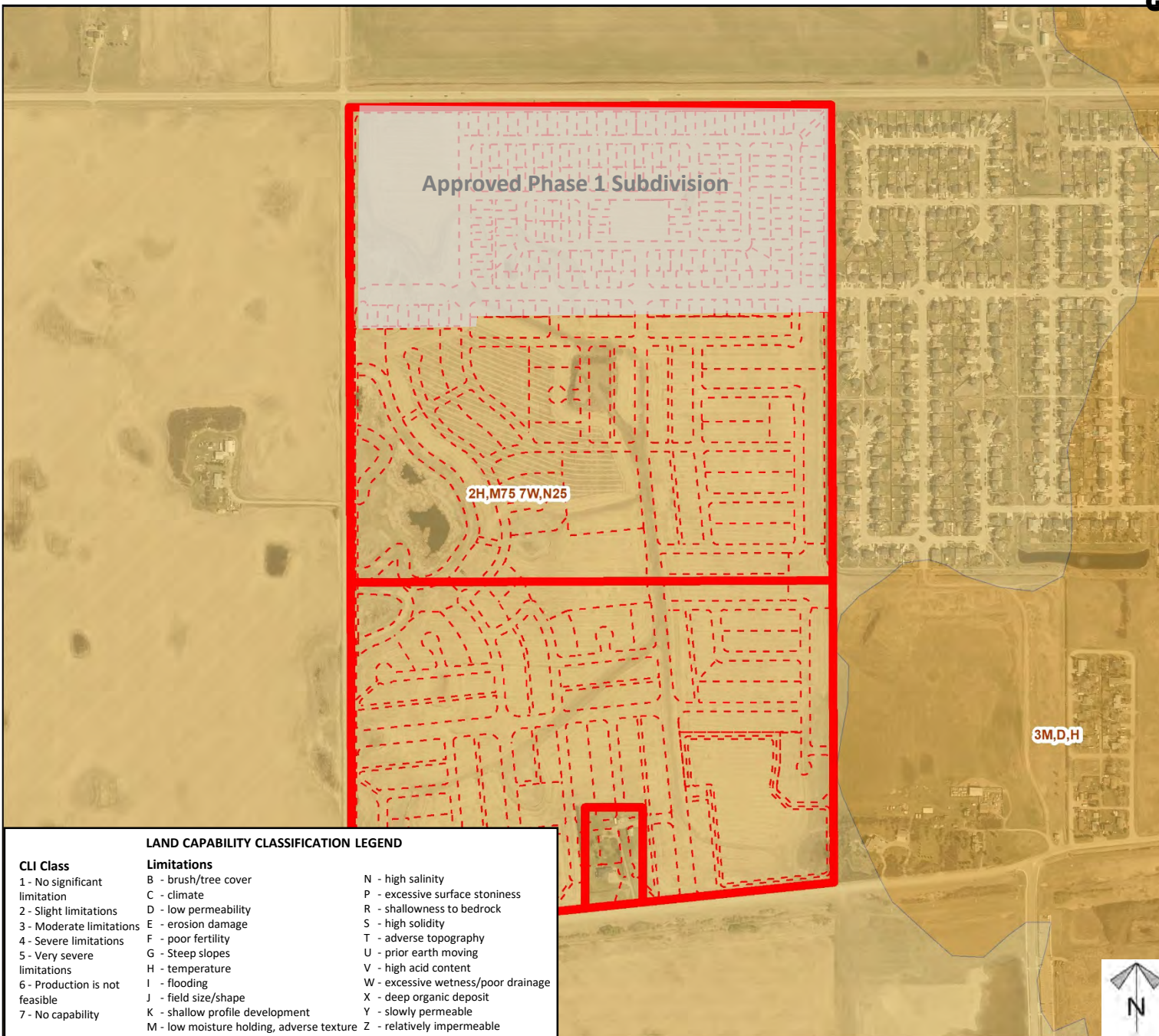


Division: 4
 Roll: 03222002/03/91
 File: PL20210007
 Legal: A Portion of NW 22-
 23-27-W4M & SW 22-23-27-
 W4M
 Printed: Jan 20, 2021

Soil Classifications

Redesignation Proposal

To redesignate the remainder lands from Agricultural, General District (A-GEN) and Residential, Rural District (R-RUR) to Residential, Mid-Density Urban District (R-MID), Special, Parks and Recreation District (S-PRK), Special, Natural Open Space District (S-NOS), and Special, Public Service District (S-PUB), in order to facilitate future phases of Painted Sky Development.



LAND CAPABILITY CLASSIFICATION LEGEND

CLI Class	Limitations	
1 - No significant limitation	B - brush/tree cover	N - high salinity
2 - Slight limitations	C - climate	P - excessive surface stoniness
3 - Moderate limitations	D - low permeability	R - shallowness to bedrock
4 - Severe limitations	E - erosion damage	S - high solidity
5 - Very severe limitations	F - poor fertility	T - adverse topography
6 - Production is not feasible	G - Steep slopes	U - prior earth moving
7 - No capability	H - temperature	V - high acid content
	I - flooding	W - excessive wetness/poor drainage
	J - field size/shape	X - deep organic deposit
	K - shallow profile development	Y - slowly permeable
	M - low moisture holding, adverse texture	Z - relatively impermeable

Division: 4
 Roll: 03222002/03/91
 File: PL20210007
 Legal: A Portion of NW 22-23-27-W4M & SW 22-23-27-W4M
 Printed: Jan 20, 2021

