

EMPOWERING COMMUNITIES

THE IMPACT OF ROCKY VIEW FOUNDATION



2025



RVF serves Rocky View County, Airdrie, Beiseker, Cochrane, Crossfield, and Irricana.

- Three senior SL2 lodges with over 233 units.
- Four senior independent living apartment buildings with 86 affordable apartments.
- Delivers the Rental Assistance Program in the Rocky View region with over 140 recipients.



CHALLENGES

01. RENTAL MARKET PRESSURES

Vacancy rates in the region have declined from 6.6% in 2020 to 2.6% in 2023.

02. INCOME VS. HOUSING COSTS

In 2022, approximately 22% of households in Alberta were in core housing need.

03. AGING POPULATION

There is a rising need for senior-specific housing. By 2030, seniors (65+) are expected to make up over 18% of Alberta's population, compared to 14% in 2023.

04. INSUFFICIENT NEW HOUSING DEVELOPMENTS

Despite growing demand, new housing developments are not keeping pace. In 2023, housing starts in Alberta decreased compared to the previous year .





MAKING A DIFFERENCE

INDEPENDENT LIVING MANORS

AIRDRIE - DIAMOND JUBILEE MANOR & SUITES

BEISEKER - CROSSROADS MANOR

COCHRANE - EVERGREEN MANOR

CROSSFIELD - DR. WHILLANS MANOR

After the rent on my apartment increased, I knew I needed an alternative living option. I started looking into independent manors because they offered everything I needed to stay self-sufficient. When I walked into the manor, I was immediately impressed. It's a wonderful community where friendships thrive. We support each other through the ups and downs, and there's a real sense of togetherness. We also love to joke around and have fun, which is a big attraction for everyone. Living here makes me feel truly happy.





MAKING A DIFFERENCE

RENTAL ASSISTANCE BENEFIT

When my husband, Pat, was diagnosed with colon cancer, everything changed. After six months of chemo, he was deemed palliative and could no longer work, causing our income to drop drastically. On August 7, 2024, Pat passed away, and I was left struggling to cover rent, with 79% of my income going toward it.

The Rental Assistance Benefit (RAB) program was our saving grace. Rocky View Foundation helped me through the process, and increased support meant my kids and I could stay in our home. This program didn't just help us—it saved us. Thanks to RVF, I can keep food on the table, pay our bills, and find a little peace during this difficult time.





MAKING A DIFFERENCE

ABRIO PLACE - AIRDRIE
BIG HILL LODGE - COCHRANE
ROCKY VIEW LODGE - CROSSFIELD

John's life journey led him through hard work in rural Alberta, yet as he reached his 70s and faced health challenges, his circumstances became more challenging. With no family nearby and relying solely on government pension benefits, John struggled to afford rent. As winter approached, he faced the harsh reality of homelessness, contemplating living in his car. Fortunately, John discovered one of our lodges and reached out to our team. Learning about our affordability formula gave him hope for a place he could call home. Today, John is settled comfortably, enjoying the safety and warmth of our community. His journey stands as proof of the profound impact RVF has on both residents and the wider community.

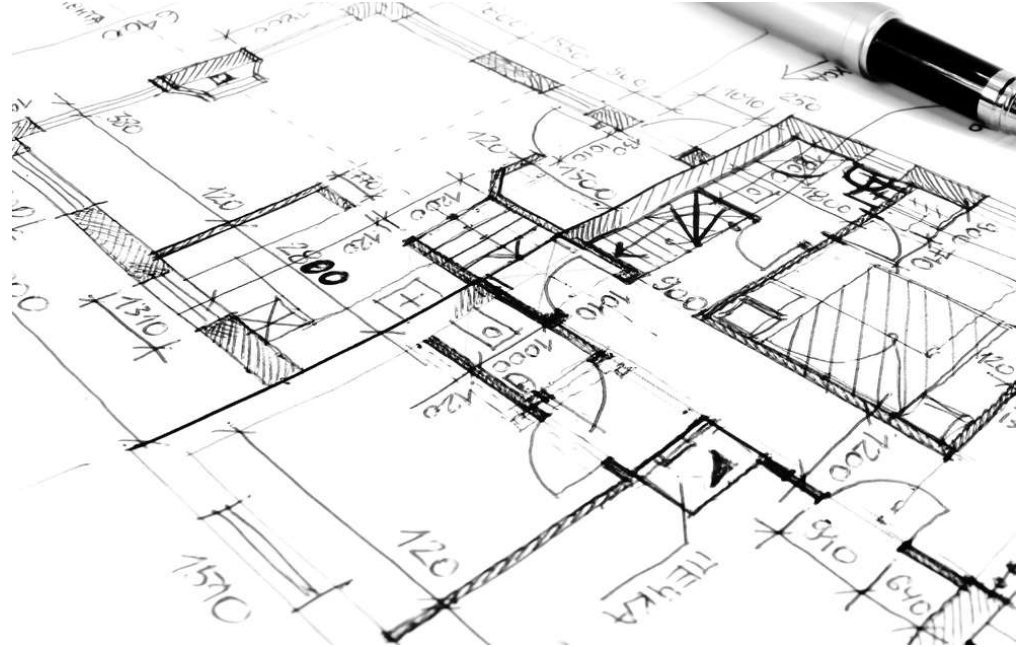


MOVING FORWARD

MAINTAINING SAFE &
SECURE COMMUNITIES



DEVELOPING NEW
VIBRANT COMMUNITIES



AFFORDABLE HOUSING RESERVE FUND



Plan for the Future: Facilitate the construction, expansion, or rehabilitation of affordable housing units in line with identified community needs.

Leverage Other Funding: Strengthen our ability to secure provincial, federal, and private funding opportunities through matching contributions.

Ensure Financial Stability: Mitigate financial risks associated with unforeseen capital expenditures or market fluctuations.



THANK YOU

Phone : +403-945-9724

Website : www.rockyviewfoundation.org

Email : crowe@rockyviewfoundation.org

Address: #103 - 58 Gateway Drive Ne, Airdrie

