



THE TRAIL, STAGE 2



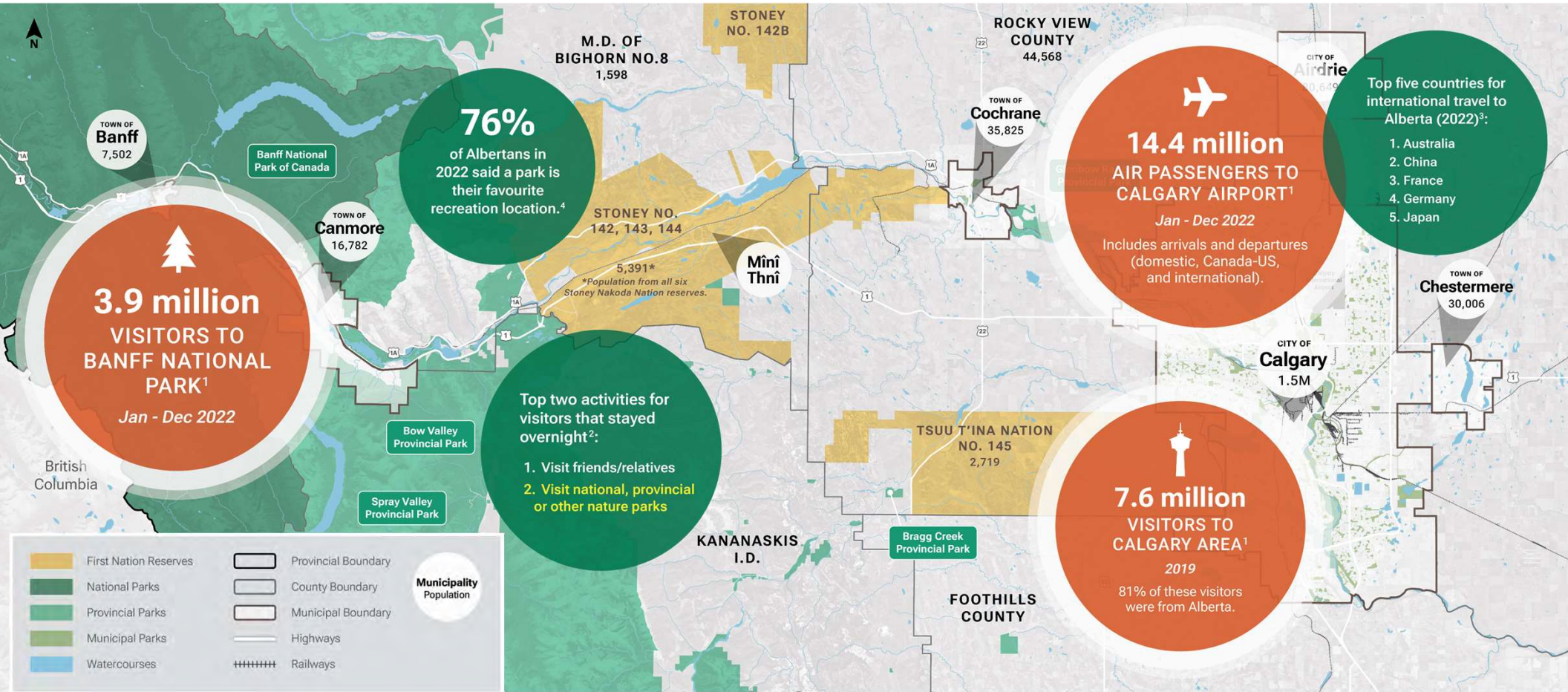
FALL / WINTER 2024

Contents

- > The Opportunity
- > Bringing The Trail Stage 2 to Life
- > Next Steps

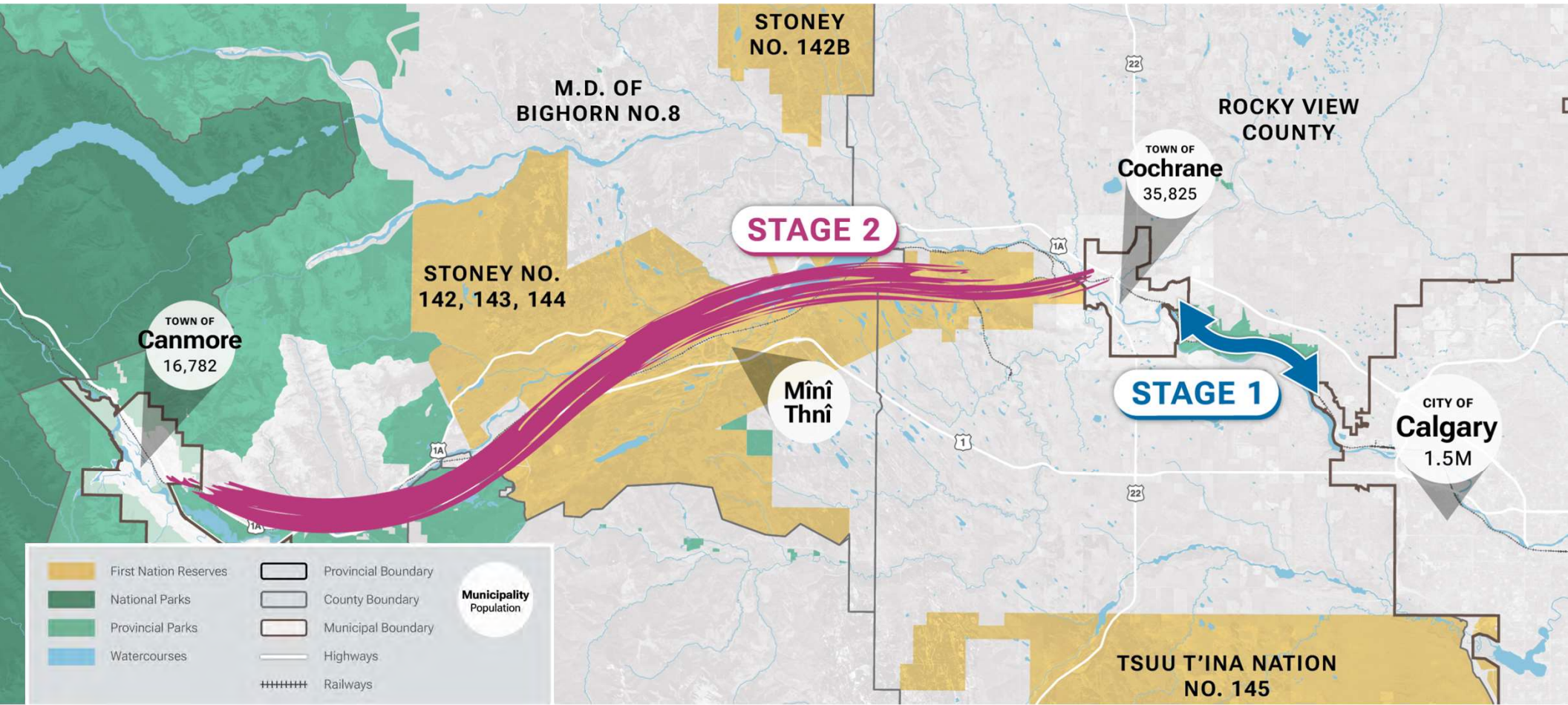


Destination Experience in the Bow Valley



➤ The Opportunity

Two Stages



➤ Bringing The Trail, Stage 2 to Life

Investing in our future

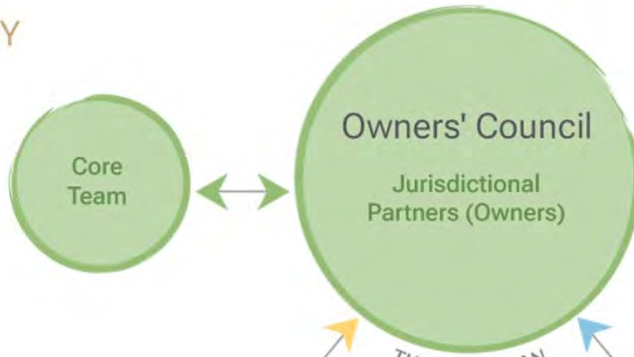
The Trail is a once in a lifetime Alberta project to connect the City of Calgary to the Town of Canmore.

The Trail (Stage 1 and Stage 2) will become part of the 28,000-kilometre Trans Canada Trail Network and add to the existing network of trails benefiting Albertans through public health, economic and environmental impacts.

●▶ Bringing The Trail, Stage 2 to Life



DECISION-MAKING BODY



Trail Advisory Group

May include representatives from:

- TRANS CANADA TRAIL
- ALBERTA TRAILNET
- ROTARY CLUB OF CANMORE
- ROTARY CLUB OF COCHRANE
- RUNDLE MOUNTAIN CYCLING CLUB
- CANMORE & AREA MOUNTAIN BIKING ASSOCIATION

TECHNICAL AND IMPLEMENTATION TEAMS



Consultant Support

May include:

- URBAN SYSTEMS
- OTHER CONSULTANTS

Stage 2 Sections

Canmore to Cochrane (Sections TBD)



➤ Bringing The Trail, Stage 2 to Life

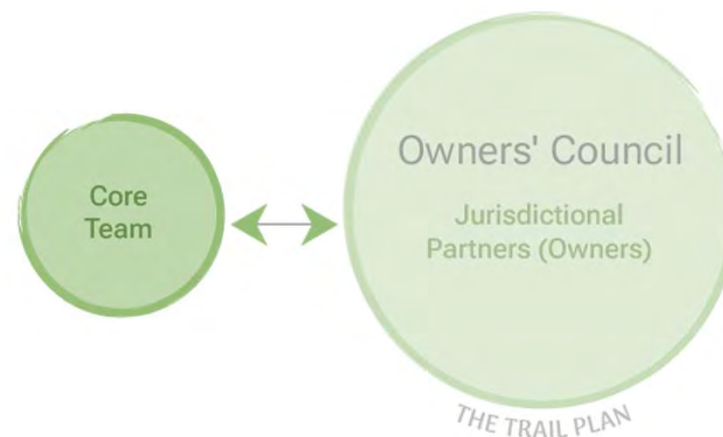
The Core Team

Authority:

- Grassroots drivers and community champions of The Trail, Stage 2 process.
- The Core Team to Chair the Owners' Council as stewards of the project and pursue funds to support the development of The Trail Plan, Stage 2 process.
- No decision-making authority over work completed for The Trail Plan.

Membership:

- Comprised of volunteer representatives from local organizations, which may include:
 - Rotary Club of Canmore (RCC)
 - Rundle Mountain Cycling Club (RMCC)
 - Canmore & Area Mountain Biking Association (CAMBA)



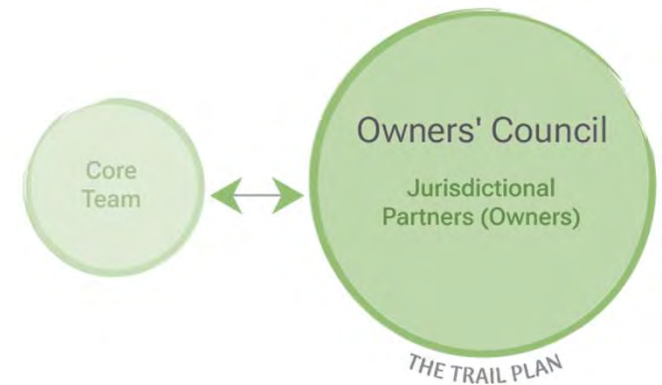
Owners' Council

Authority:

- Hold decision-making authority on the development, approval, and coordination of all work required to complete The Trail Plan, Stage 2.

Membership:

- Comprised of jurisdictional partners that will be the future owners and operators of The Trail.
- Voting membership dependent by section



Potential Owners' Council Members by Section: ✓ = Voting Member

Canmore to Highway 1X

- ✓ Town of Canmore
- ✓ M.D. of Bighorn
- ✓ Alberta Forestry and Parks
- ✓ Alberta Transportation and Economic Corridors

Highway 1X to Rocky View County

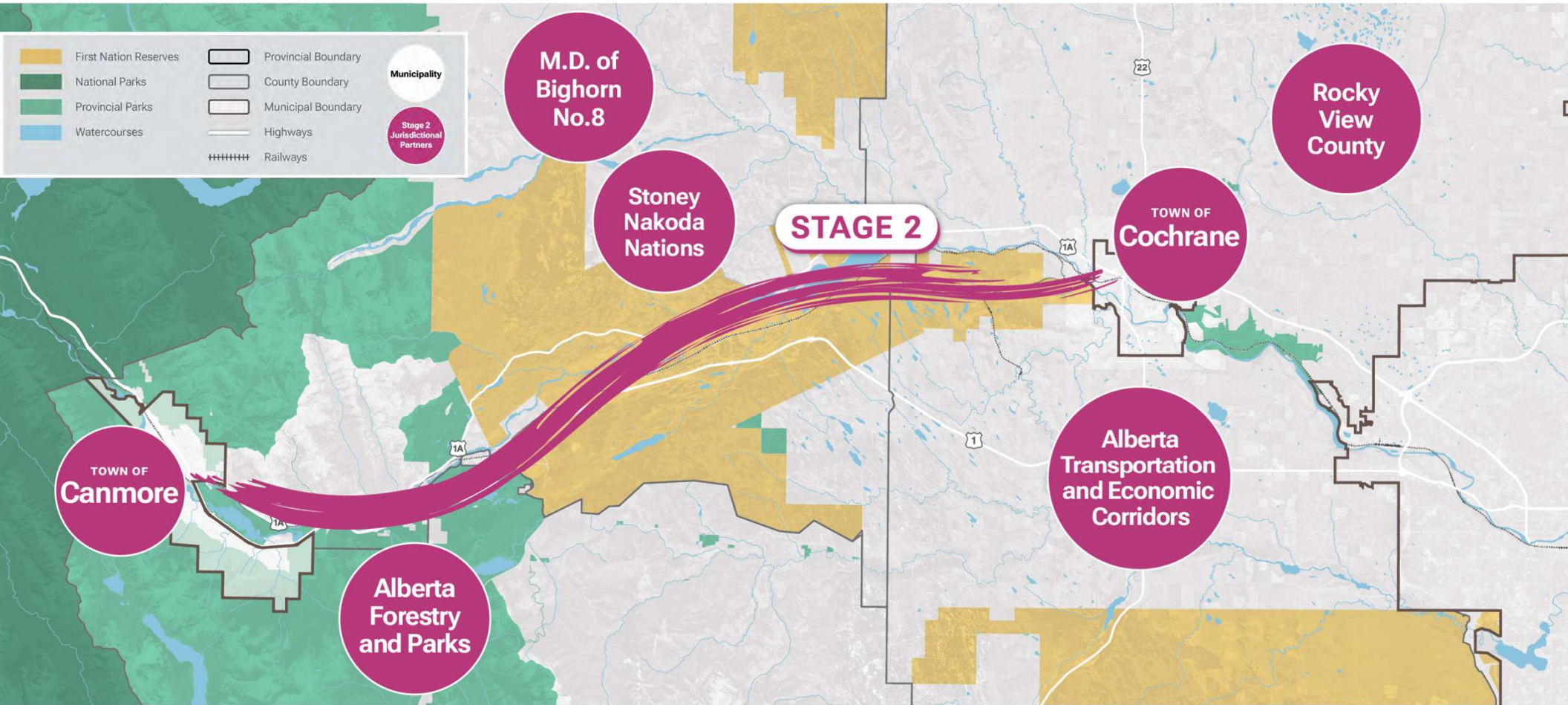
- ✓ Stoney Nakoda Nations
- ✓ M.D. of Bighorn
- ✓ Alberta Forestry and Parks
- ✓ Alberta Transportation and Economic Corridors

Rocky View County to Cochrane

- ✓ Stoney Nakoda Nations
- ✓ Rocky View County
- ✓ Town of Cochrane
- ✓ Alberta Transportation and Economic Corridors

➔ Bringing The Trail, Stage 2 to Life

Stage 2 Potential Jurisdictional Partners



➤ The Opportunity

Trail Advisory Group

Authority:

- Provide support and resource mechanism for Owners' Council.
- No decision-making authority over work completed for The Trail Plan—limited reporting function required from the Owners' Council.

Membership:

- Comprised of representatives from groups, or individuals who have:
 - skills related to trail planning and development
 - experience working with/connections to government (all levels)
 - expertise in fund raising

Trail Advisory Group

May include representatives from:

- TRANS CANADA TRAIL
- ALBERTA TRAILNET
- ROTARY CLUB OF CANMORE
- ROTARY CLUB OF COCHRANE
- RUNDLE MOUNTAIN CYCLING CLUB
- CANMORE & AREA MOUNTAIN BIKING ASSOCIATION

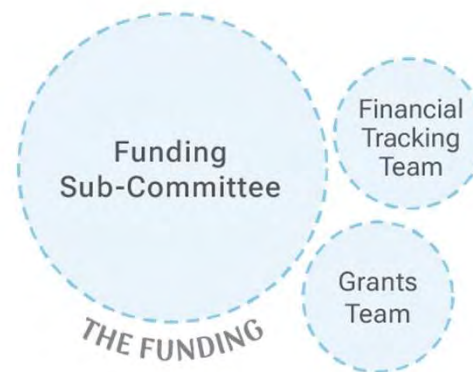
Technical and Implementation Teams

Authority:

- Advance and provide advice on specific topic areas required to complete The Trail Plan, Stage 2.
- No decision-making authority; provide topic area recommendations to the Owners' Council for review and decision.

Membership:

- Comprised of representatives from groups or individuals who have demonstrated professional experience and skills in the competencies related to the topic area.



Consultant Support

Authority:

- Provide advisory support to Owners' Council and technical and implementation teams in topic areas, as required.
- No decision-making authority.

Membership:

- Retained by The Core Team to support stewardship of the Owners' Council and work delegated to technical and implementation teams.

Consultant Support

May include:

- URBAN SYSTEMS
- OTHER CONSULTANTS

The Ask of Jurisdictional Partners along The Trail, Stage 2



Determine level of interest to participate in exploring The Trail, Stage 2

Confirm if jurisdiction is willing to participate in process (i.e., Owners' Council) to develop a Trail Plan for The Trail, Stage 2

Agree to terms of Memorandum of Understanding

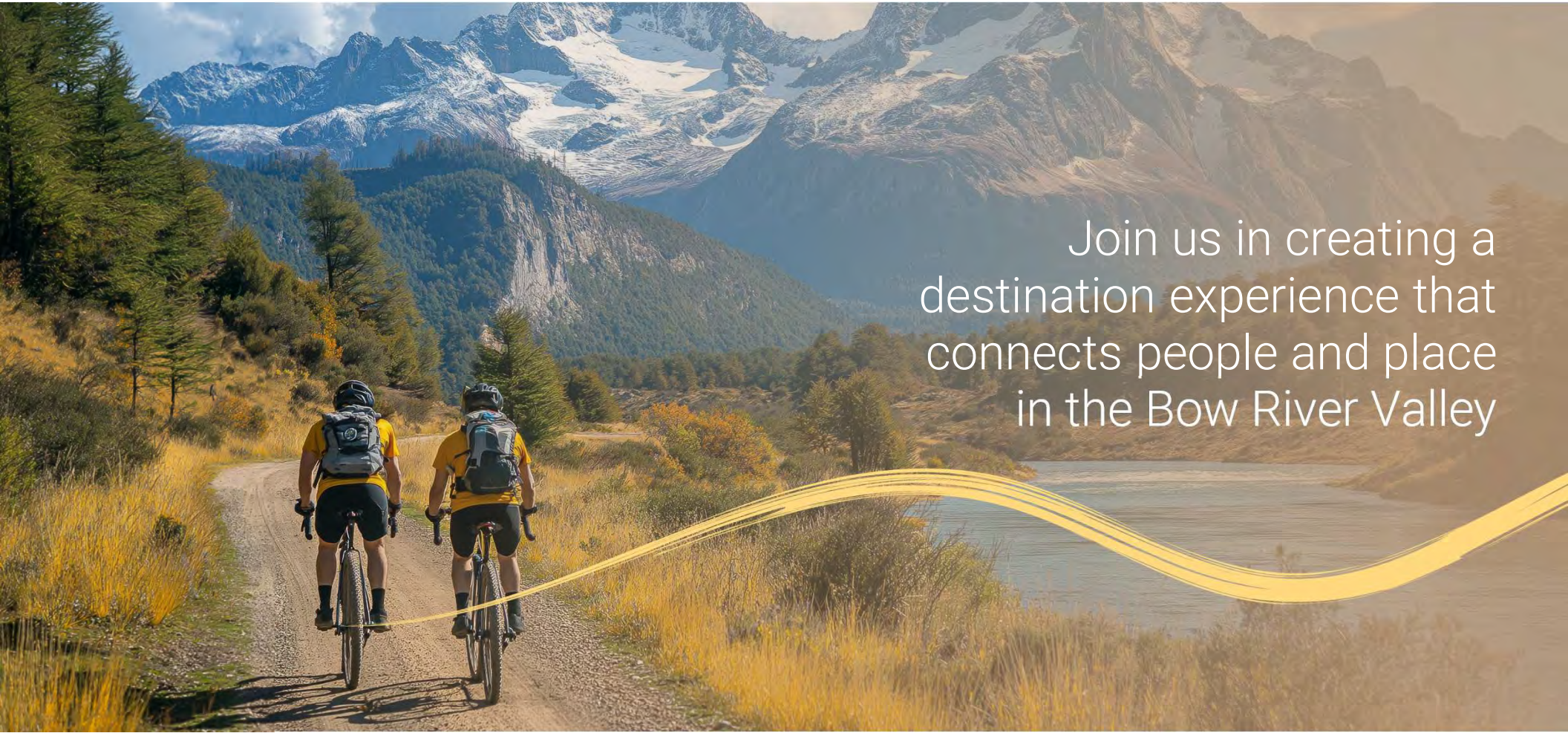
Commit to working with other jurisdictional partners to develop The Trail Plan, Stage 2 and make available staff, information and technical resources

Develop The Trail Plan, Stage 2

Meet regularly with Owners' Council to draft and finalize The Trail Plan, Stage 2

WINTER 2024 / 2025

SPRING 2025 1-2 Year Process
(AS FUNDING IS OBTAINED)



Join us in creating a destination experience that connects people and place in the Bow River Valley

—▶ Next Steps