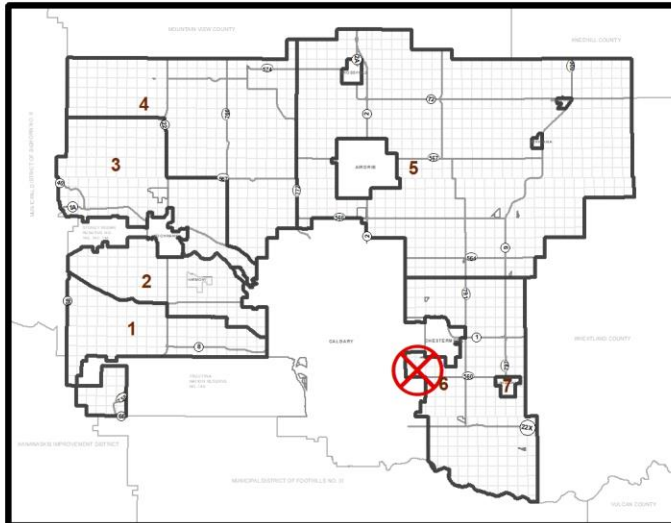




## Location & Context

### Development Proposal

General Industry,  
Type II, construction of  
an office/warehouse  
building, tenancy for a  
concrete company,  
outside storage of  
equipment, machinery,  
and products and  
signage



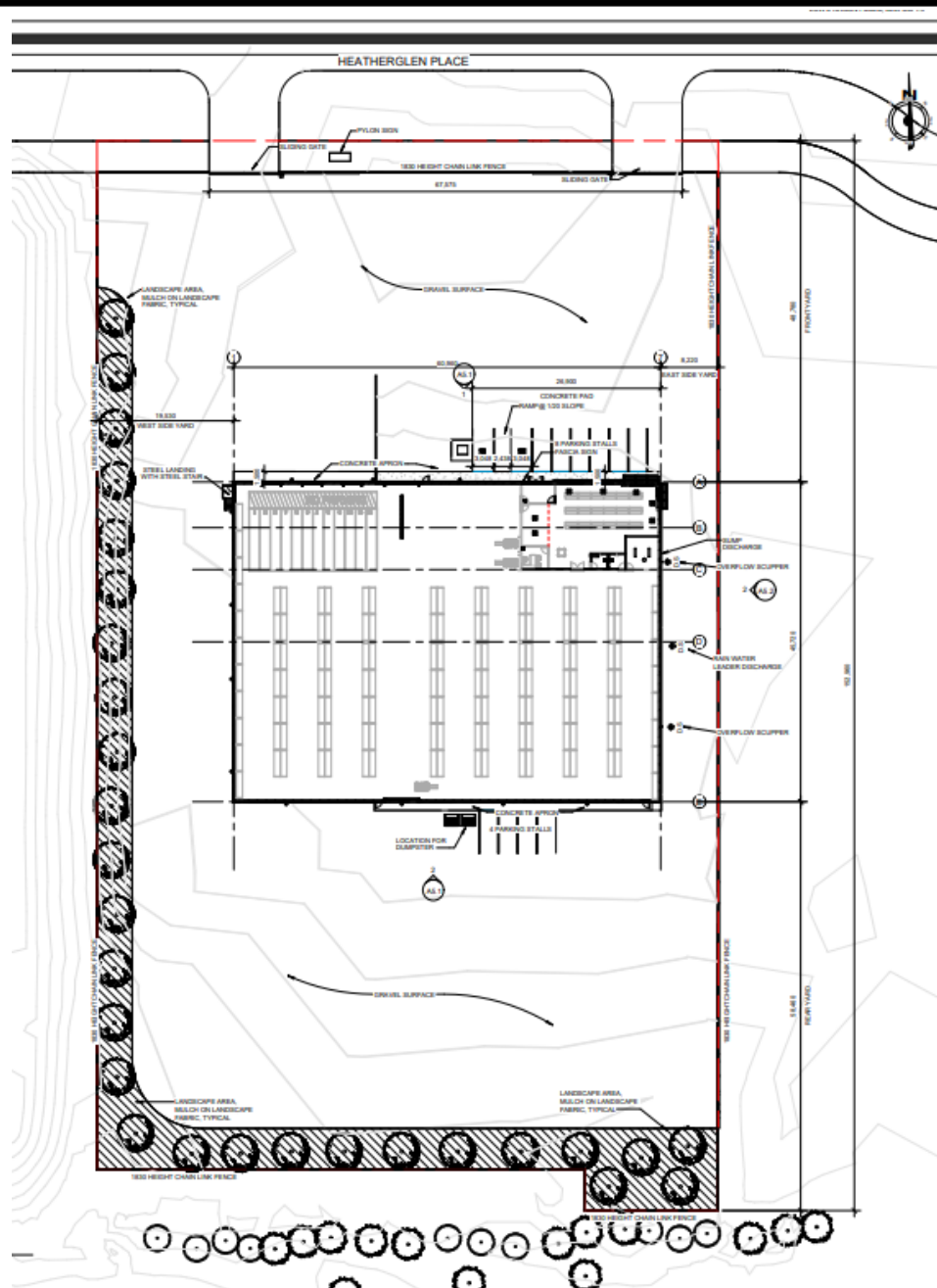
Division: 6  
 Roll: 03329056  
 File: PRDP20248544  
 Printed: 2/12/2025  
 Legal: A portion of  
 NW-29-23-28-W04M



## Site Plan

### Development Proposal

General Industry,  
Type II, construction  
of an  
office/warehouse  
building, tenancy  
for a concrete  
company, outside  
storage of  
equipment,  
machinery, and  
products and  
signage



Division: 6  
Roll: 03329056  
File: PRDP20248544  
Printed: 2/12/2025  
Legal: A portion of  
NW-29-23-28-W04M

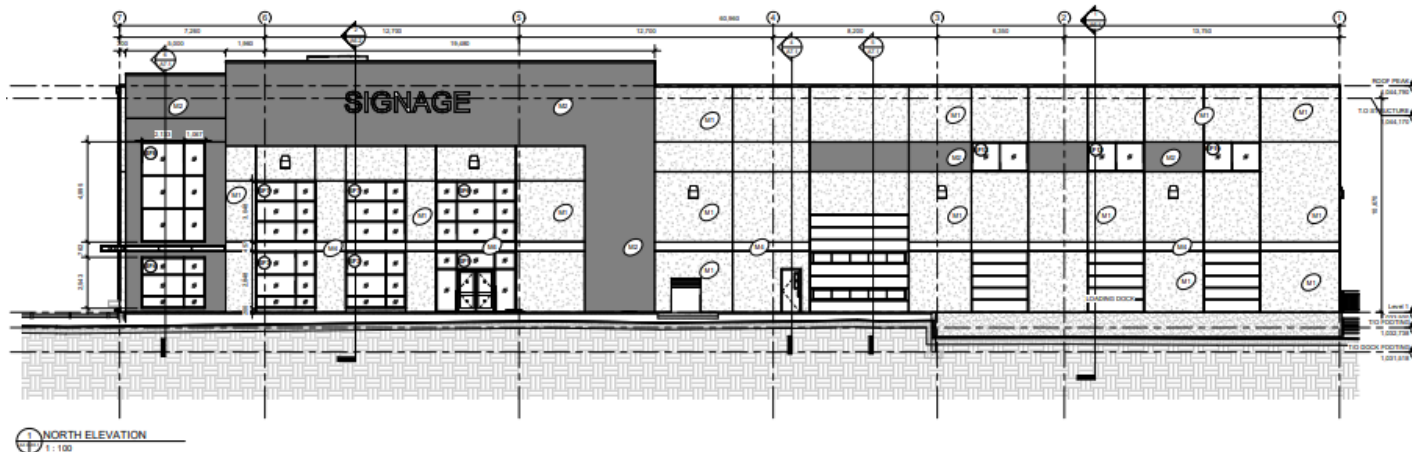




## Elevations

### Development Proposal

General Industry,  
Type II, construction  
of an  
office/warehouse  
building, tenancy  
for a concrete  
company, outside  
storage of  
equipment,  
machinery, and  
products and  
signage



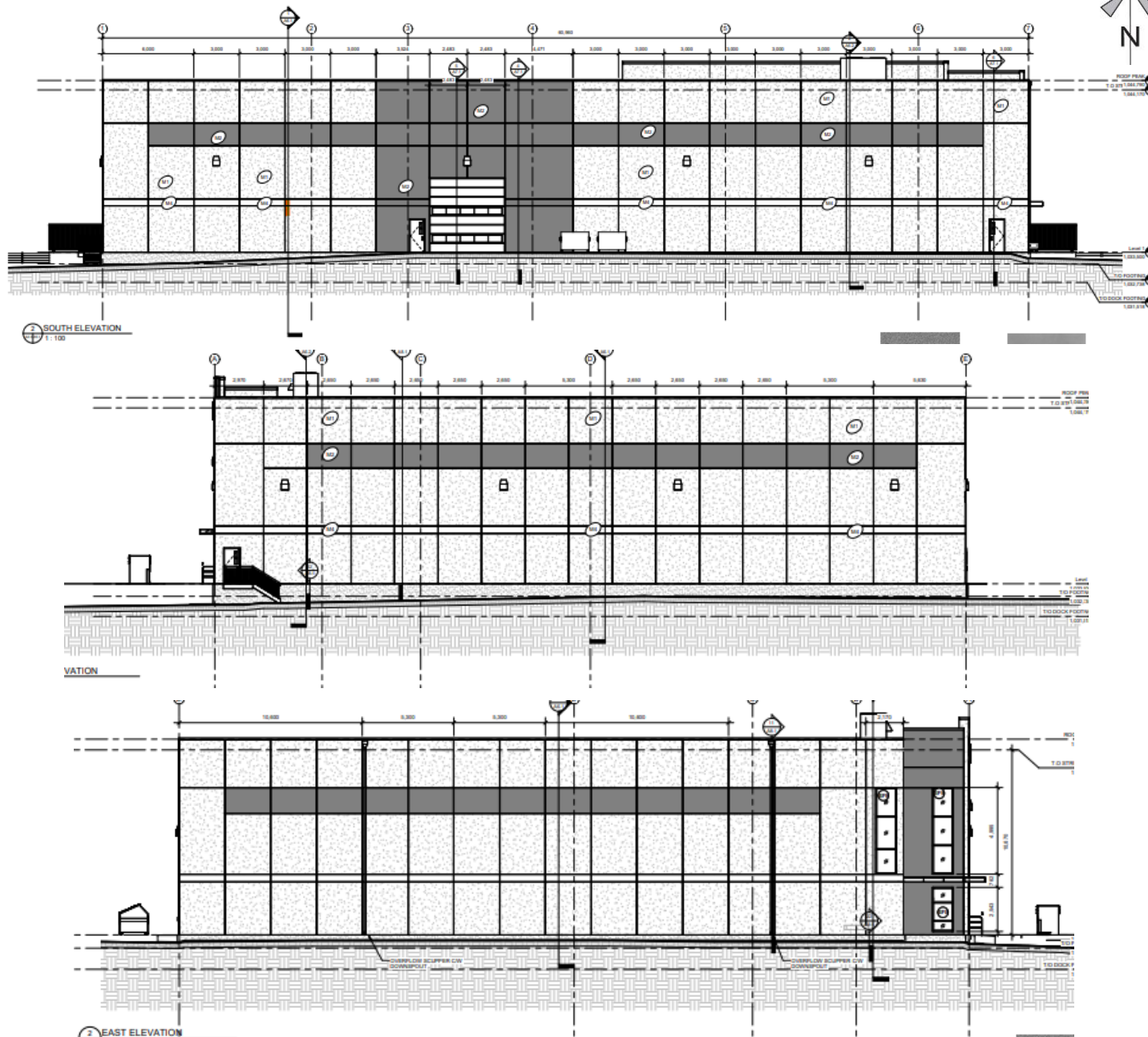
Division: 6  
Roll: 03329056  
File: PRDP20248544  
Printed: 2/12/2025  
Legal: A portion of  
NW-29-23-28-W04M



## Elevations

### Development Proposal

General Industry,  
Type II, construction  
of an  
office/warehouse  
building, tenancy  
for a concrete  
company, outside  
storage of  
equipment,  
machinery, and  
products and  
signage



Division: 6  
Roll: 03329056  
File: PRDP20248544  
Printed: 2/12/2025  
Legal: A portion of  
NW-29-23-28-W04M



## Landowner Circulation Area

### Development Proposal

General Industry,  
Type II, construction  
of an  
office/warehouse  
building, tenancy for a concrete  
company, outside  
storage of  
equipment,  
machinery, and  
products and  
signage

### Legend

Support



Not Support



Division: 6  
Roll: 03329056  
File: PRDP20248544  
Printed: 2/12/2025  
Legal: A portion of  
NW-29-23-28-W04M

