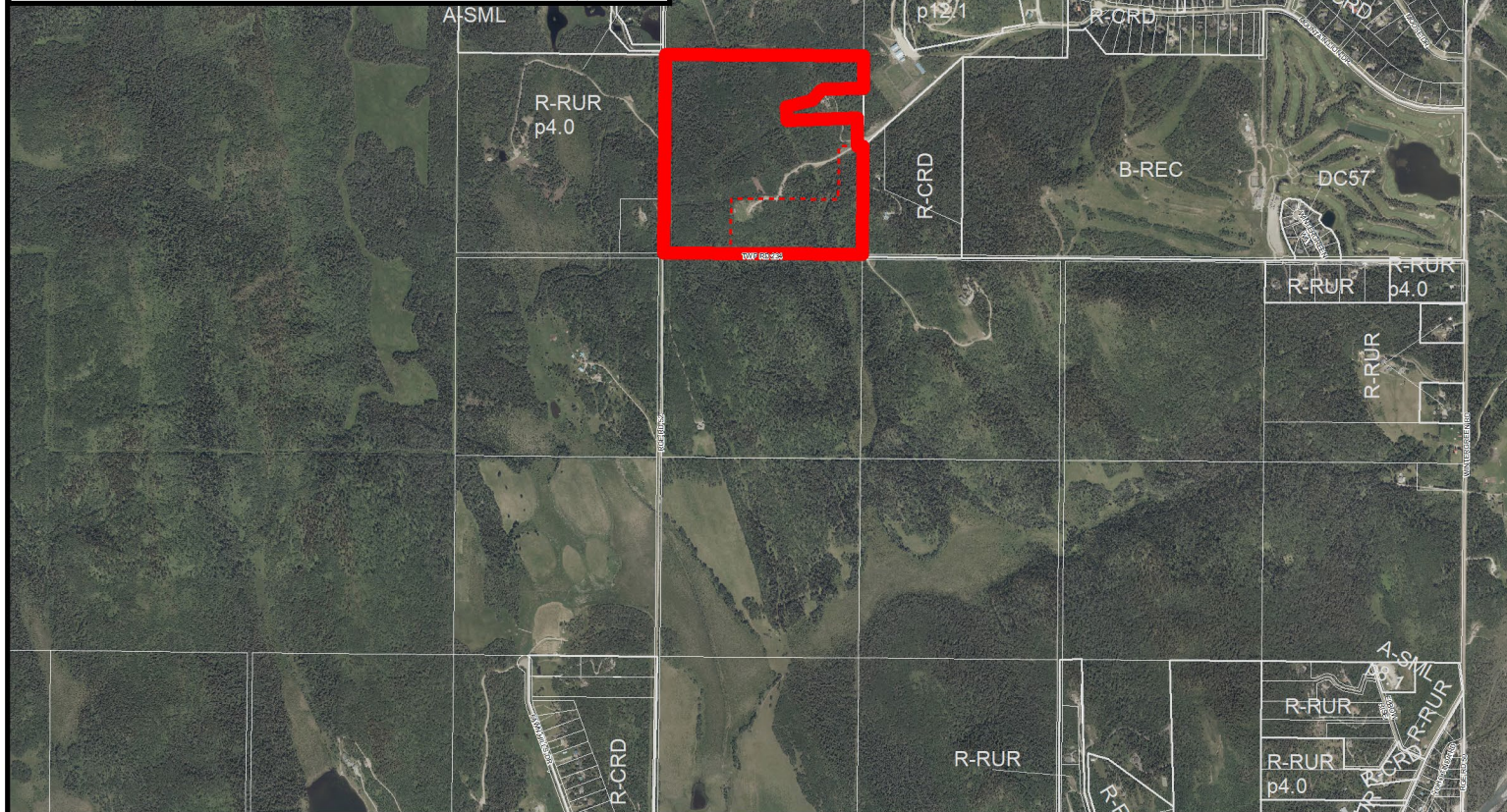
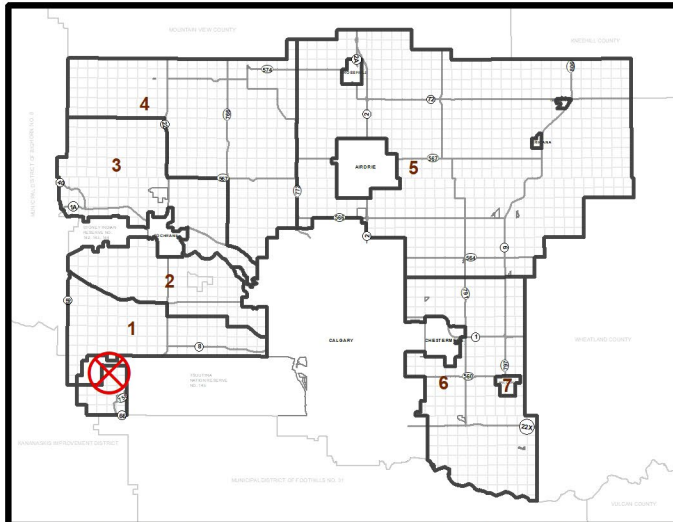




## Location & Context

To redesignate a  $\pm 13.91$  hectare ( $\pm 34.38$  acre) portion of the subject lands from Agricultural, General District (A-GEN) to Agricultural, Small Parcel District (A-SML p13.9) to facilitate the creation of one  $\pm 13.91$  hectare ( $\pm 34.38$  acre) parcel with a  $\pm 47.47$  hectare ( $\pm 117.29$  acre) remainder.

Division: 1  
 Roll: 03926008  
 File: PL20240094  
 Printed: 5/9/2024  
 Legal: A portion of  
 SW-26-23-05-W05M



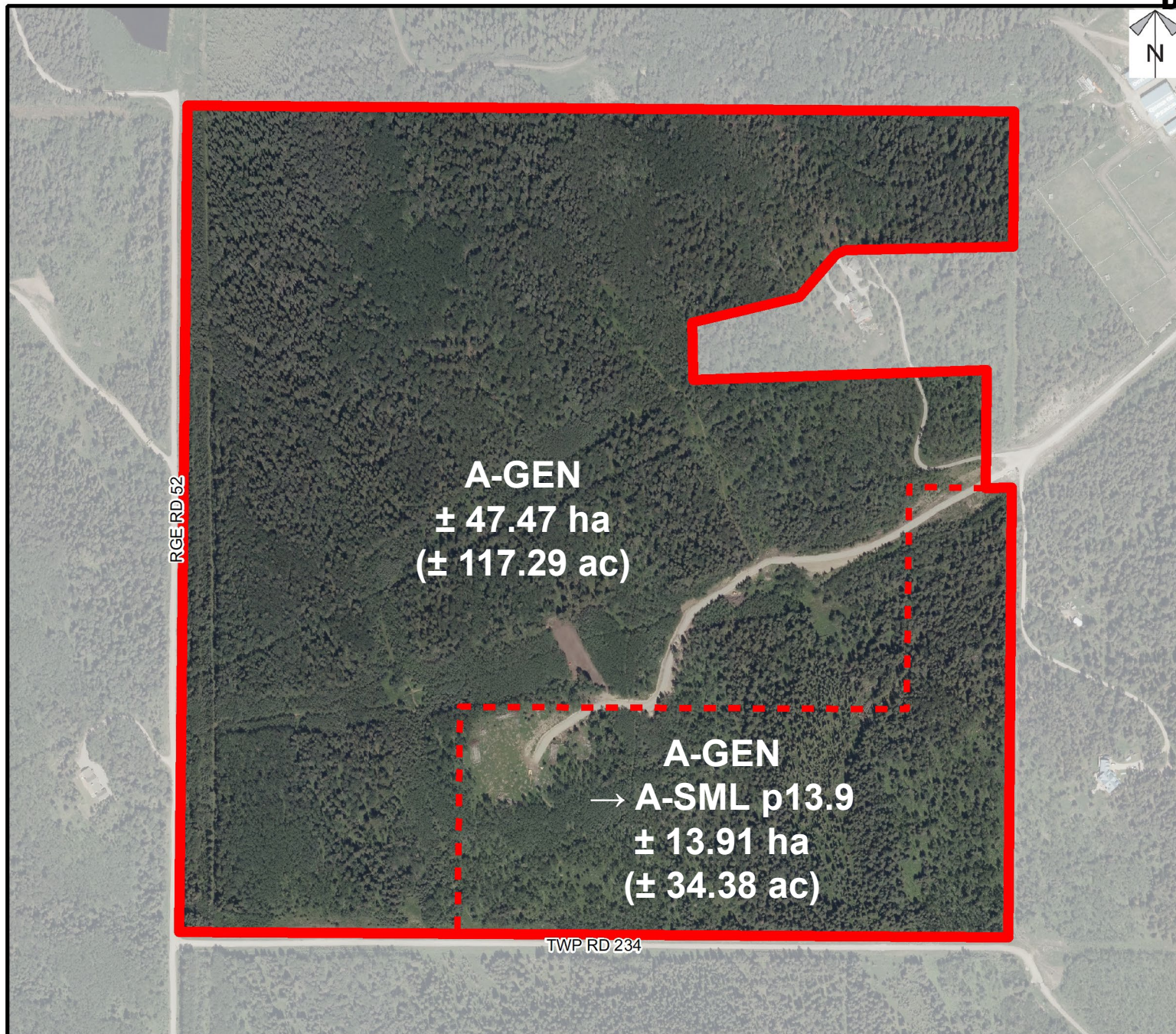




## Development Proposal

To redesignate a  $\pm 13.91$  hectare ( $\pm 34.38$  acre) portion of the subject lands from Agricultural, General District (A-GEN) to Agricultural, Small Parcel District (A-SML p13.9) to facilitate the creation of one  $\pm 13.91$  hectare ( $\pm 34.38$  acre) parcel with a  $\pm 47.47$  hectare ( $\pm 117.29$  acre) remainder.

Division: 1  
Roll: 03926008  
File: PL20240094  
Printed: 5/9/2024  
Legal: A portion of  
SW-26-23-05-W05M







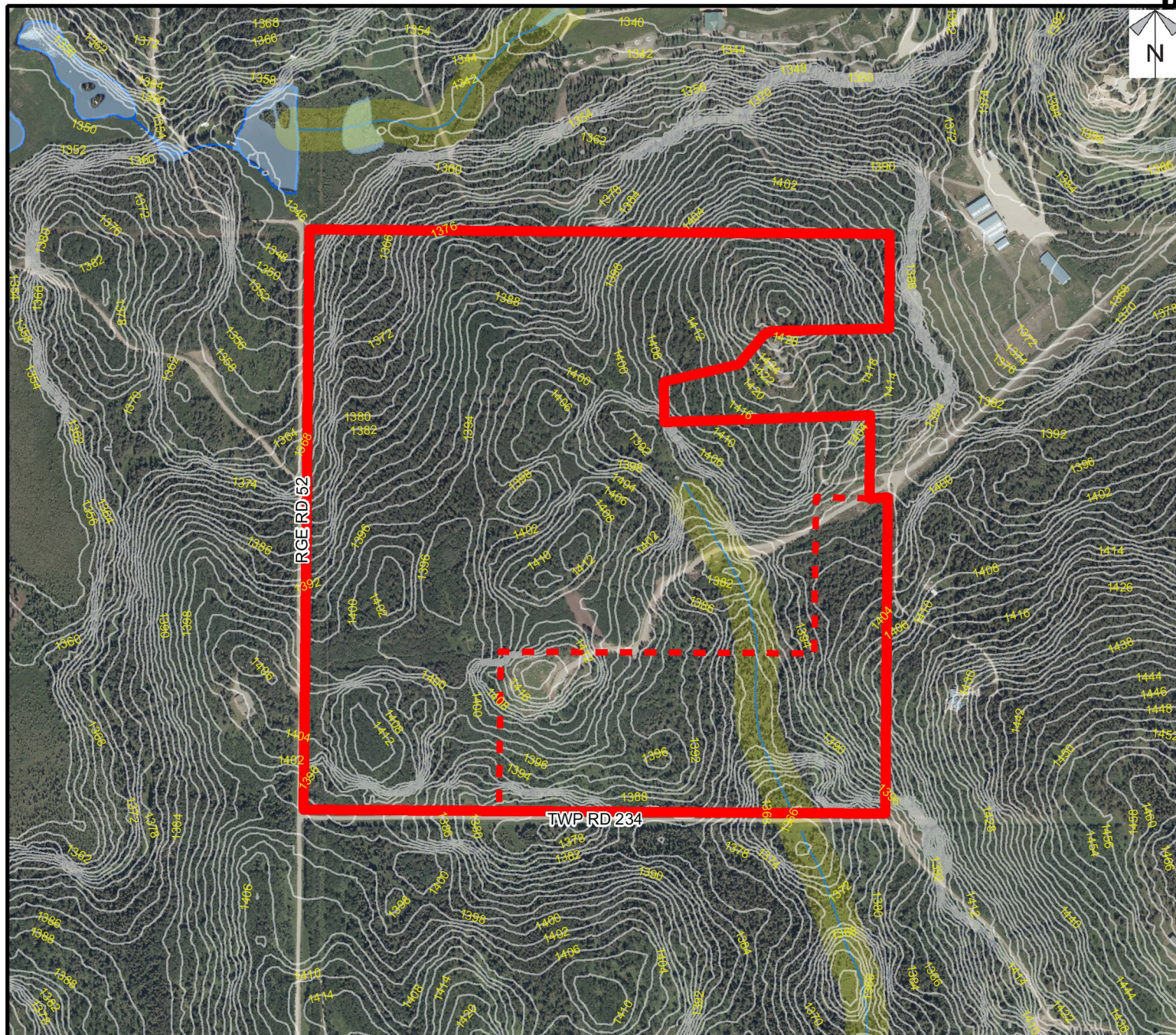
## Environmental

To redesignate a  $\pm 13.91$  hectare ( $\pm 34.38$  acre) portion of the subject lands from Agricultural, General District (A-GEN) to Agricultural, Small Parcel District (A-SML p13.9) to facilitate the creation of one  $\pm 13.91$  hectare ( $\pm 34.38$  acre) parcel with a  $\pm 47.47$  hectare ( $\pm 117.29$  acre) remainder.

### Legend

-  Subject Lands
-  Contour - 2 meters
-  Riparian Setbacks
-  Alberta Wetland Inventory
-  Surface Water

Division: 1  
 Roll: 03926008  
 File: PL20240094  
 Printed: 5/9/2024  
 Legal: A portion of  
 SW-26-23-05-W05M

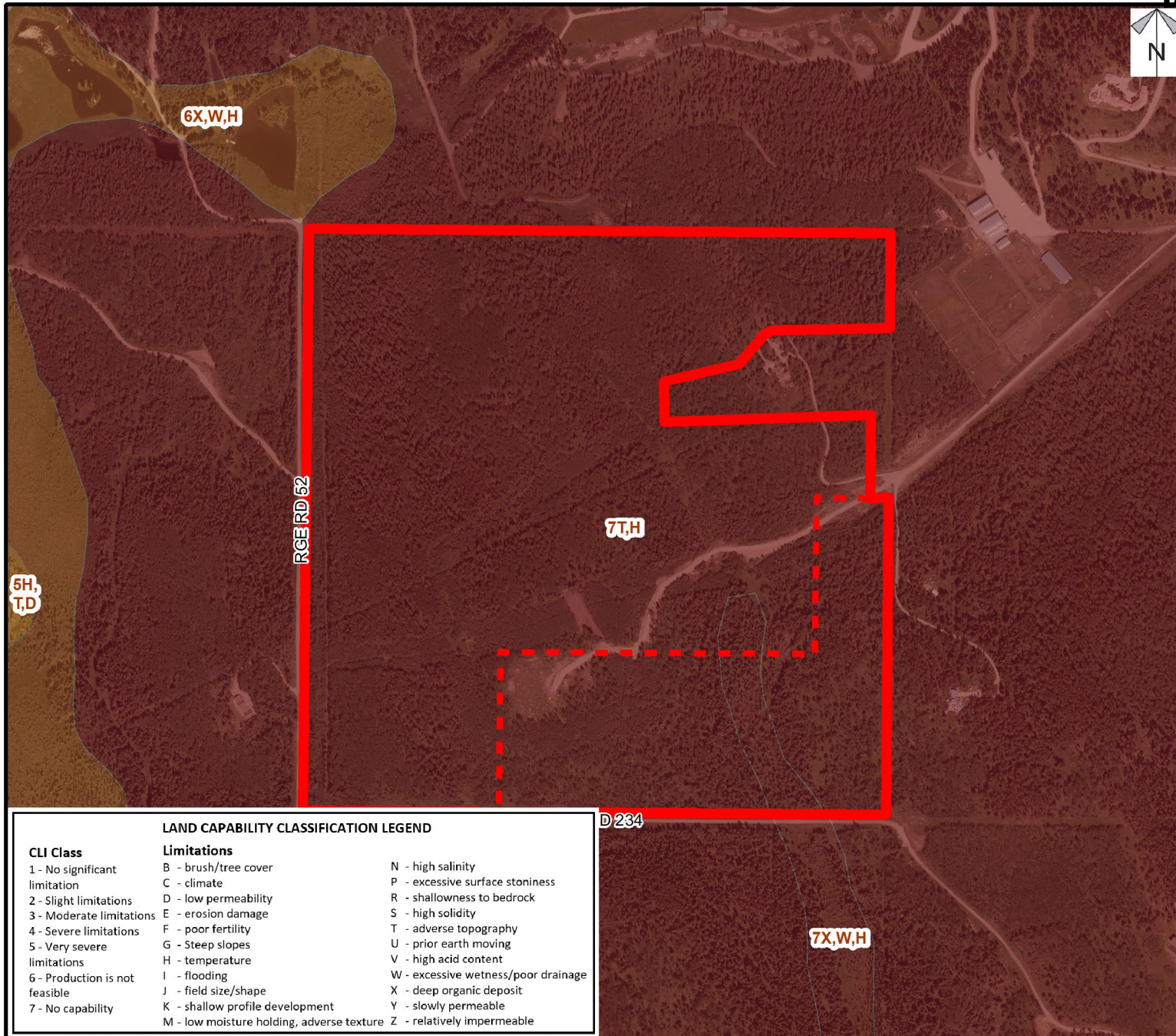






## Soil Classifications

To redesignate a  $\pm 13.91$  hectare ( $\pm 34.38$  acre) portion of the subject lands from Agricultural, General District (A-GEN) to Agricultural, Small Parcel District (A-SML p13.9) to facilitate the creation of one  $\pm 13.91$  hectare ( $\pm 34.38$  acre) parcel with a  $\pm 47.47$  hectare ( $\pm 117.29$  acre) remainder.



### LAND CAPABILITY CLASSIFICATION LEGEND

CLI Class	Limitations	
1 - No significant limitation	B - brush/tree cover	N - high salinity
2 - Slight limitations	C - climate	P - excessive surface stoniness
3 - Moderate limitations	D - low permeability	R - shallowness to bedrock
4 - Severe limitations	E - erosion damage	S - high solidity
5 - Very severe limitations	F - poor fertility	T - adverse topography
6 - Production is not feasible	G - Steep slopes	U - prior earth moving
7 - No capability	H - temperature	V - high acid content
	I - flooding	W - excessive wetness/poor drainage
	J - field size/shape	X - deep organic deposit
	K - shallow profile development	Y - slowly permeable
	M - low moisture holding, adverse texture	Z - relatively impermeable

Division: 1  
Roll: 03926008  
File: PL20240094  
Printed: 5/9/2024  
Legal: A portion of SW-26-23-05-W05M



## Landowner Circulation Area

To redesignate a  $\pm 13.91$  hectare ( $\pm 34.38$  acre) portion of the subject lands from Agricultural, General District (A-GEN) to Agricultural, Small Parcel District (A-SML p13.9) to facilitate the creation of one  $\pm 13.91$  hectare ( $\pm 34.38$  acre) parcel with a  $\pm 47.47$  hectare ( $\pm 117.29$  acre) remainder.

### Legend

Support



Not Support



Division: 1  
Roll: 03926008  
File: PL20240094  
Printed: 5/9/2024  
Legal: A portion of  
SW-26-23-05-W05M

